



## EWP-202C WIRELESS ANNUNCIATOR SYSTEM



- Advanced dual-infrared beam and superior wireless technology
- Wireless multi-function receiver
- Dual channel receiver with status LED's
- 20 ft. detection range across doorway
- Independent entry/exit counters
- 200 ft. wireless RF transmission in open field
- 2 selective chime sounds per channel
- Chime volume control
- Resettable 6-digit counter (up to 999999)
- Power failure memory back-up
- Wireless push-button included
- 16 million I.D. codes system

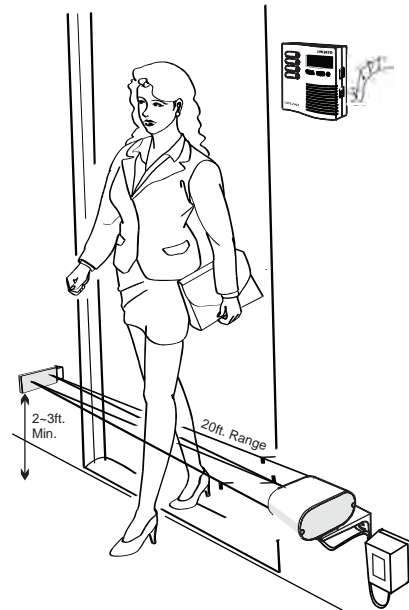
Stock number: 4130003

The EWP-202C is a two channel wireless annunciator system designed with a superior dual counter and active infrared technology. It delivers a pleasant chime along with a recorded count. It emits a continuous, invisible dual beam across the doorway to the reflector. When either beam is interrupted, it announces the entrance or exit of customers with a pleasant, distinguishable chime sound. Each event is counted, recorded, and registered by the built-in digital counter and can be viewed and compared later in both modes. The annunciator is also equipped with an alert mode that sounds the built-in siren when triggered, adding additional security. This is ideal for malls, office buildings, liquor stores, warehouses, parking structures, medical offices, and more.

### Complete Kit Includes:

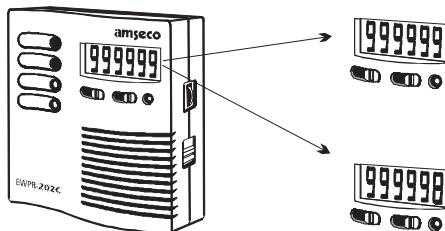
- 1 Infrared sensor/transmitter
- 1 Wireless receiver with built-in chime and counter
- 1 Wireless push-button
- 1 Reflector
- 2 Power transformers (12V AC 20VA)
- 1 Long plastic bracket
- 1 Short metal bracket
- 2 Short plastic brackets
- 2 6 ft. power cords with in-line switch
- 6 3/4" sheet metal screws
- 1 1/2" bolt with locking washer
- 4 1 1/4" machine screws with washer and nut
- 2 1/2" sheet metal screws

### Application



### Wireless Receiver

Keeps count on all incoming and outgoing customers and retains it in memory.



## EWP-202C

### WIRELESS ANNUNCIATOR SYSTEM

#### Specifications

| Model                                | EWPT-202                                   | EWPP-202                   | EWPR-202                            |
|--------------------------------------|--|----------------------------|-------------------------------------|
| Description                          | Infrared Sensor/<br>Transmitter            | Wireless Push-<br>Button   | Wireless<br>Receiver                |
| Detection Method                     | Active Infrared                            | -                          | RF                                  |
| Detection Range                      | 10 ft. JP2 = ON 20 ft.<br>JP2 = OFF (f.s.) | -                          | -                                   |
| Max. Transmission Range              | 200 ft. Open Field                         | 200 ft. Open Field         | -                                   |
| Power Source                         | 12V AC 20 VA                               | 12V DC<br>Battery Included | 12V AC 20VA                         |
| Power Consumption<br>(Standby)       | 50mA                                       | -                          | 100mA                               |
| Power Consumption<br>(In Activation) | 1 Amp                                      | -                          | 500mA                               |
| Volume Control                       | -  | -                          | 0-85dB                              |
| Chime Sounds Selectable              | -  | Dip Switch: 2              | Dip Switch: 1                       |
| Response Time                        | 4m/sec                                     | -                          | -                                   |
| Light Source                         | Infrared Pulse<br>Beam 950nm               | -                          | -                                   |
| Wireless<br>Frequency                | 315 Mhz                                    | 315Mhz                     | 315Mhz                              |
| Chime Terminal<br>Output (-)         | Ground                                     | -                          | -                                   |
| Chime Terminal Output<br>(+V)        | 12V DC 1A                                  | -                          | -                                   |
| Chime Terminal<br>Output (OC)        | Exit Output (-)<br>TR Output 1A            | -                          | -                                   |
| Chime Terminal<br>Output (IC)        | Entry Output (-)<br>TR Output 1A           | -                          | -                                   |
| Terminal 1 & 2                       | 12V AC Input                               | -                          | 12V AC Input                        |
| Terminal 3                           | -  | -                          | Relay Dry Contact<br>N.O. (2 sec)   |
| Terminal 4                           | -  | -                          | Relay Dry Contact<br>COM (2 sec)    |
| Entry/Exit Time<br>Delay             | -  | -                          | JP1 ON = 30 sec<br>JP1 OFF = 60 sec |
| Alarm Sound<br>Duration              | -  | -                          | 50 Sec                              |
| Alarm Sound ON/OFF                   | -  | -                          | JP2 ON / JP2 OFF                    |
| Sensitivity                          | JP2 ON = Min<br>JP2 OFF = Max              | -                          | -                                   |
| Travel Direction                     | SW1 Selectable                             | -                          | -                                   |
| Blocked Infrared<br>Beam Warning     | JP1 Selective:<br>OFF/10Sec/60Sec          | -                          | -                                   |
| Counter Memory                       | -  | -                          | EEPROM                              |
| Installation                         | Indoor                                     | Indoor                     | Indoor                              |
| Operating<br>Temperature Range       | 14 - 122°F<br>(-10 - 50°C)                 | 14 - 122°F<br>(-10 - 50°C) | 14 - 122°F<br>(-10 - 50°C)          |

f.s. = Factory Setting

#### Alert Mode

Protect restricted, unauthorized areas after hours by simply changing the setting on your receiver from CHIME to ALERT MODE. This feature provides a programmable entry/exit delay (30 or 60 seconds) and a 50 second audible alarm when triggered. The EWP-202C alarm relay output allows you to connect to any security control panel or to a number of other devices such as: video event recorder, self-contained siren, bell box, strobe, or any other device designed for alarm signaling to provide additional security.

#### Integration to Security Devices

