

NUUO Mainconsole

FLEXIBLE • INTELLIGENT • POWERFUL



The Flexible Analog & IP Integration Choice

Variable Recording Technologies

Analog & IP Camera Compatible

Seamless 3rd Party Integration

Advanced Video Analytics

Upgrading doesn't Mean Abandoning Old Cameras

NUUO Mainconsole is the best choice when you have existing older analog systems but wants to upgrade to IP cams. It provides seamless integration between older and newer types of cameras. NUUO Mainconsole is also flexible. Choose from software + capture card option or software + capture card + certified hybrid machines to ensure optimum performance. The configuration option is limitless.

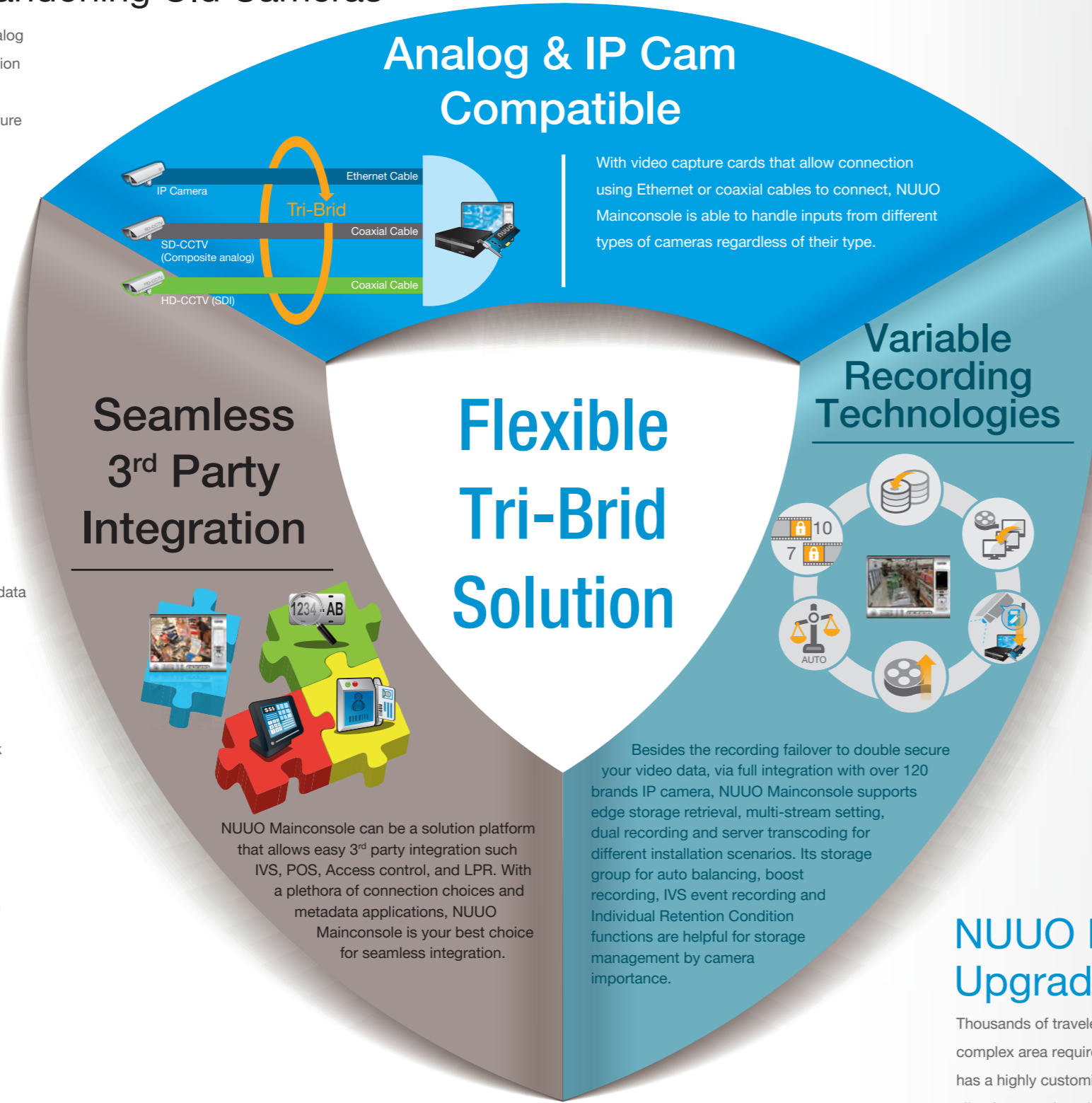


Feature Highlights

- Support up to 96CH camera recording per server¹
- Support camera edge storage to automatically or daily retrieve video data from camera to Mainconsole server²
- Storage group for better video and storage management
- POS , I/O device , LPR and access control integration
- Advanced & embedded video analytics
- Smart Guard detection of 6 events with 11 instant responses
- Supports camera multi-stream function in both live view and playback
- Counting application
- Supports dual recording
- Playback intelligent search
- Windows active directory
- Privacy mask
- iPhone, iPad, Android (Liveview, 1CH playback and push notification)
- E-map
- Digital watermark
- Boost recording
- Dual password validation
- Edge motion detection from IP camera¹
- OnGuard (software watchdog)
- Failover recording server
- Auto backup
- Flexible video recycle management options
- Digital PTZ and camera multi-view
- Friendly GUI recording schedule
- Two-way audio

¹. Check http://www.nuuo.com/SupportCamera.php?node_id=4#3 for NUUO Mainconsole camera support list

². The maximum number of camera connections depends on the server's hardware configuration and the total bit rate of the IP cameras. Please check NUUO Calculator on <http://www.nuuo.com/wiki.php>



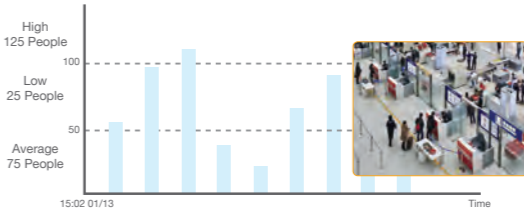
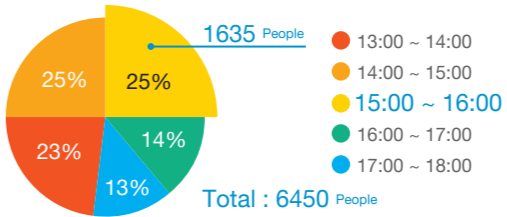
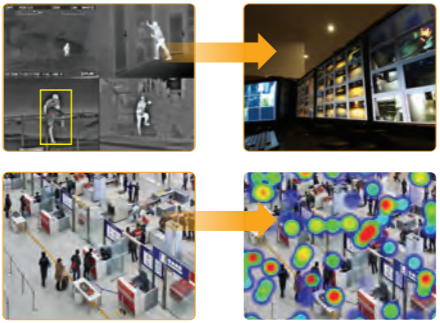
NUUO Mainconsole Save Bank Upgrade Cost

Thousands of travelers pass through airports every day, managing such a highly complex area requires a flexible and efficient surveillance system that scales well, has a highly customizable alarm system, and efficiently runs backups. In our Italian client's case, they deployed NUUO Mainconsole hybrid solution along with NUUO CMS to centrally monitor all the cameras from video matrix and oversee alarm events with E-map alarm response system. Adopt NUUO CMS to manage your large scale projects and experience the same benefits starting now.

Client Case Study

Intelligent Video Surveillance

- Compatible with thermal , analog and IP camera
- Video centric business intelligent report³
- Central IVS alarm management

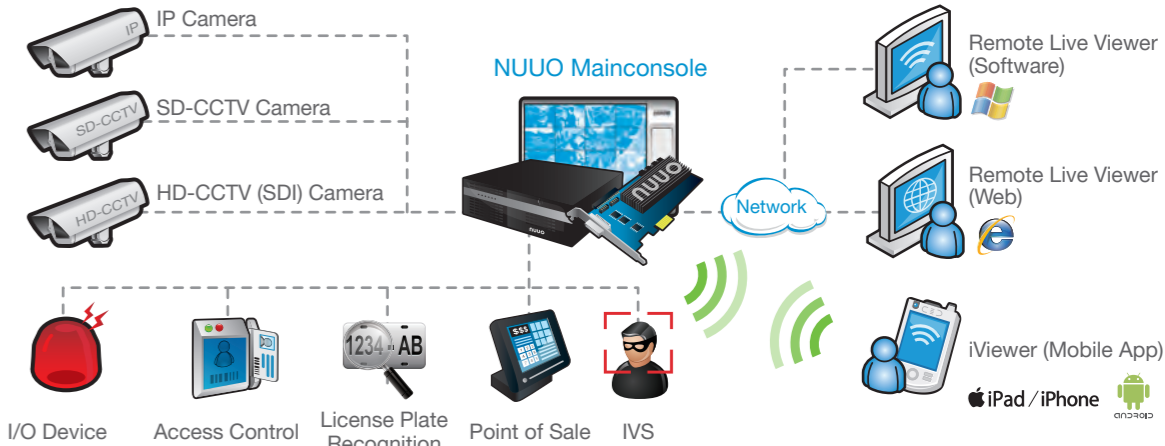


Part Number	SCB-IP-P-IVS COUNTING	SCB-IP-P-IVS PRESENCE	SCB-IP-P-IVS SURVEILLANCE	SCB-IP-P-IVS ADVANCED
Function				
Number of Detection Zones or Lines	40	40	40	40
People Counting	♦			♦
Tamper Detection	♦	♦	♦	♦
Camera Calibration			♦	♦
Object Classification			♦	♦
Camera Shake Elimination		♦	♦	♦
Presence (Tripwire)		♦	♦	♦
Enter and Exit			♦	♦
Appear and Disappear			♦	♦
Dwell			♦	♦
Tailgating			♦	♦
Stop			♦	♦
Direction			♦	♦
Abandoned / Removed Object ⁴			♦	♦

³. NUUO Web Report Service with heatmap and counting report will be available in 2015 Q2

⁴. Abandoned / Removed Object is available with NUUO Mainconsole v5.0.22 or later version

System Architecture



Specification

IP+ NVR

Product Image									
Model Name	SCB-IP+01	SCB-IP+04	SCB-IP+08	SCB-IP+12	SCB-IP+16	SCB-IP+25	SCB-IP+32	SCB-IP+36	SCB-IP+64
IP License	1	4	8	12	16	25	32	36	64 ^{*1}

*1. The maximum number of camera connections depends on the server's hardware configuration and the total bit rate of the IP cameras.
Please check NUUO Calculator on <http://www.nuuo.com/wiki.php>


Hybrid Appliance

Product Image				
Model Name	NH-4500-PRO		NH-4500-ENT	NH-4500-EXT
CPU Model	Intel Haswell i5-4570S, 2.9GHz		Intel Haswell i7-4770S, 3.1GHz	Intel Xeon E5-2620, 2.0GHz
Maximum Channel	64			
Capture Card	SCB-6000S, SCB-7000S, SCB-7100, SCB-8000 Series			
Recording Performance	Please use our online calculator tool for estimation: http://www.nuuo.com/calculator/			
Operating System	Windows 7 Professional 64 bit / Windows 7 Ultimate 64 bit			
Compression	H.264, MPEG-4, MJPEG, MxPEG (depends on IP camera)			
Remote Client	Remote Live Viewer (Software), Remote Live Viewer (Web), iViewer (Mobile App)			
Remote Client OS	Windows 2008, Windows XP (32-bit), Vista (32-bit), Win7, Win8, Win8.1 (32 and 64-bit)			
Mobile Client Platform	iPhone, iPad, Android			
HDD Bays	4 bays	6 bays	8 bays	
External Storage	iSCSI			
Ethernet Port	2 x Gigabit Ports, RJ45			
External Ports	2x USB 3.0, 4x USB 2.0	2x USB 3.0, 4x USB 2.0	2x USB 3.0, 6x USB 2.0	
Audio	Two - way			
Voltage	100 - 240V			
Power Consumption	400w	400w	700w	
Dimensions (H x W x D)	177 x 482 x 502 mm	177 x 482 x 502 mm	177 x 482 x 600 mm	
Weight (without HDD)	17.6 kg (38.8lbs)	17.6 kg (38.8lbs)	21 kg (46.2 lbs)	
Temperature (Operating with HDD)	0° C ~ 40°C (32°F ~ 104°F)			
Humidity (Operating)	5% ~ 95%			
Supported Languages	Albania, Bulgarian, Chinese (Simplified), Chinese (Traditional), Croatian, Czech, Danish, Dutch, English, Farsi, Finnish, French, German, Hebrew, Hungarian, Italian, Japanese, Korean, Norway, Polish, Portuguese (Brazil), Portuguese (Portugal), Romanian, Russian, Serbian, Slovak, Slovenian, Spanish, Swedish, Thai, Turkish			


Specification

Capture Cards

HD SDI H.264 Hardware Compression Capture Card SCB 8000 Series

Model Name	SCB-8004HD
Video Inputs	4
Max. Cards Per Server	4 (can be with 6000S/7000S series for more channels)
Display Rate (NTSC/PAL)	120 fps @ 1080p / 100 fps @ 1080p
Recording Rate	120 fps @ 1080p
Power Consumption	20W
Video Resolution	1080p, 720p
Dimensions (W x H)	178 x 126 mm
Product Image	




H.264 Hardware Compression Capture Card SCB 7100 Series

Model Name	SCB-7108	SCB-7116
Video/Audio Inputs	8 / 8	16 / 16
Max. Cards Per Server	1 (can be with 6000 / 6000S / 7000 / 7000S series for more channels)	
Display Rate (NTSC/PAL)	240 / 200 fps	480 / 400 fps
Recording Rate [D1] (NTSC/PAL)	240 / 200 fps	480 / 400 fps
Power Consumption	8W	9W
TV Output Rate	25fps (RCA only), 14fps (Digital Port only), 10fps (RCA & Digital Port)	
TV Output	RCA connector x2, Digital Port connector x1	
Video Resolution	NTSC : 176 x120, 352 x 240, 704 x 480, PAL : 176 x 144, 352 x 288, 704 x 576	
Dimensions (W x H)	216 x 126 mm	
Product Image		

H.264 Hardware Compression Capture Card SCB 7000S Series

Model Name	SCB-7004S	SCB-7008S	SCB-7016S
Video/Audio Inputs	4 / 4	8 / 8	16 / 16
Max. Cards Per Server	4	4	4
Display Rate (NTSC/PAL)	120 / 100 fps	240 / 200 fps	480 / 400 fps
Recording Rate [D1] (NTSC/PAL)	120 / 100 fps	240 / 200 fps	480 / 400 fps
Power Consumption	7W	8W	9W
Video Resolution	NTSC : 176 x120, 352 x 240, 704 x 480, PAL : 176 x 144, 352 x 288, 704 x 576		
Dimensions (W x H)	188 x 121 mm		
Product Image			

H.264 Hardware Compression Capture Card SCB 6000S Series

Model Name	SCB-6004S	SCB-6008S	SCB-6016S
Video/Audio Inputs	4 / 4	8 / 8	16 / 16
Max. Cards Per Server	4	4	4
Display Rate (NTSC/PAL)	120 / 100 fps	240 / 200 fps	480 / 400 fps
Recording Rate [CIF] (NTSC/PAL)	120 / 100 fps	240 / 200 fps	480 / 400 fps
Recording Rate [D1] (NTSC/PAL)	30 / 25 fps	60 / 50 fps	120 / 100 fps
Power Consumption	7W	8W	9W
Video Resolution	NTSC : 176 x120, 352 x 240, 704 x 480, PAL: 176 x 144, 352 x 288, 704 x 576		
Dimensions (W x H)	188 x 121 mm		
Product Image			

About NUUO

Founded in 2004, NUUO Inc. is one of the leading global surveillance solution providers known for its reliability, prompt service and innovative spirit. NUUO's VMS and NVR solutions offer comprehensive recording, monitoring, and seamless 3rd party solution integration for IP and analog cameras.