

GV-MDR1500 Series 1.3MP H.264 Super Low Lux WDR Mini Fixed Rugged Dome



- 1/3" progressive scan super low lux CMOS
- Min. illumination at 0.01 lux
- Dual streams from H.264 and MJPEG
- Up to 30 fps at 1280 x 1024
- Day and night function (electronic)
- Vandal resistance (IK10 for metal casing)
- Ingress protection (IP67)
- EN50155 compliance for rolling stock applications
- Wide temperature tolerance (-30 °C ~ 50 °C / -22 °F ~ 122 °F)
- 3-axis mechanism:
pan (-45° ~ +45°), tilt (0° ~ 90°), rotate (0° ~ 360°)
- Built-in microphone
- Built-in micro SD card slot (SD/SDHC) for local storage
- Recording assigned by GV-Edge Recording Manager ([Windows](#), [Mac](#) version)
- PoE (IEEE 802.af)
- Wide Dynamic Range (WDR)
- 3D noise reduction
- Defog
- Motion detection
- Tampering alarm
- Privacy mask
- Text overlay
- IP address filtering
- Supports iPhone, iPad, Android & 3GPP
- 31 languages on Web interface
- ONVIF (Profile S) conformant
- More Storage Option - [NAS](#)

* No Memory Card Slot & local storage function for Argentina.

Introduction

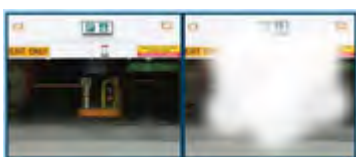
The GV-MDR1500 Series is an outdoor, fixed, mini-sized network camera with different lens options. With its super low lux CMOS image sensor, the camera can produce color image at near darkness. The camera conforms to IK10 and IP67 standards. It is adjustable in 3 axis (pan, tilt and rotate) and can be connected through PoE.

Models

Model	Iris	Focal Length (mm)	Maximum Aperture	Image Format
GV-MDR1500-1F	Fixed	2.8	F/2.0	1/3"
GV-MDR1500-2F	Fixed	3.8	F/1.8	1/3"

Active Tampering Alarm

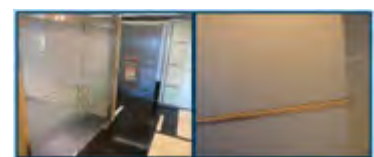
Tampered



Focus Change

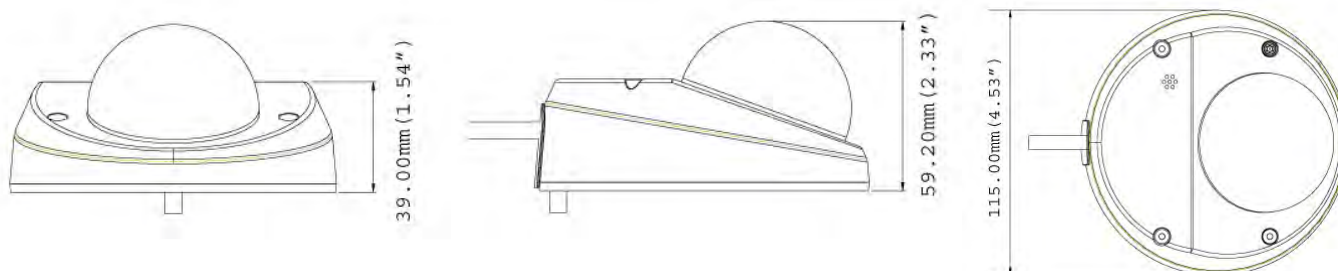


Camera Shift



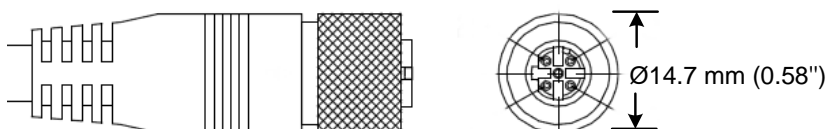
Overview

• Dimensions

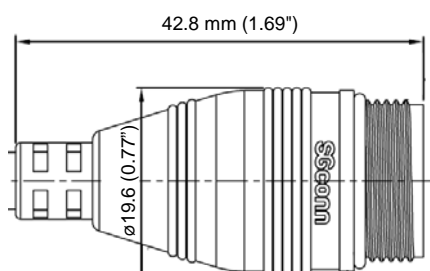


• LAN Connector

1. Waterproof M12 4-Pin Female Connector (for motor vehicles)



2. Small Waterproof Connector



Specifications

Camera		GV-MDR1500-1F	GV-MDR1500-2F
Image Sensor		1/3" progressive scan super low lux CMOS	
Picture Elements		1280 (H) x 1024 (V)	
Minimum Illumination	Color	0.01 Lux	
	BW		
Shutter Speed		Automatic, Manual (1/5 ~ 1/8000 sec.)	
White Balance		Automatic, Manual (2800K ~ 8500K)	
Gain Control		Automatic	
S/N Ratio		55 dB	
WDR		Yes	
Lens			
Megapixel		Yes	
Day/Night		Yes (electronic)	
Iris		Fixed	
Focal Length		2.8 mm	3.8 mm
Maximum Aperture		F/2.0	F/1.8
Mount		M12, Pitch 0.5 mm	
Image Format		1/3"	
Horizontal FOV		88°	64°

Lens		
Operation	Focus	Fixed
	Zoom	Fixed
	Iris	Fixed
Operation		
Video Compression		H.264, MJPEG
Video Streaming		Dual streams from H.264 and MJPEG
Frame Rate		30 fps at 1280 x 1024 (60/50 Hz) * The frame rate and the performance may vary depending on the number of connections and data bitrates (different scenes).
Image Setting		Brightness, Contrast, Saturation, Sharpness, Gamma, White Balance, Flicker-less 50/60 Hz, Image Orientation, Shutter Speed, Backlight Compensation, D/N sensitivity, WDR, Defog, Super Low Lux, Denoise, Metering
Audio Compression		G.711, AAC (optional)
Audio Support		One-Way Audio
Video Resolution		
Main Stream	4:3	1280 x 960, 640 x 480, 320 x 240
	16:9	1280 x 720, 640 x 360, 448 x 252
	5:4	1280 x 1024 (Default), 640 x 512, 320 x 256
Sub Stream	4:3	640 x 480, 320 x 240
	16:9	640 x 360, 448 x 252
	5:4	640 x 512, 320 x 256 (Default)
Network		
Interface		10/100 Ethernet
Ethernet Protocol		HTTP, HTTPS, TCP, UDP, SMTP, FTP, DHCP, NTP, UPnP, DynDNS, 3GPP/ISMA, RTSP, PSIA, SNMP, QoS (DSCP), ONVIF (Profile S)
Mechanical		
Temperature Detector		Yes
Camera Angle Adjustment	Pan	-45° ~ 45°
	Tilt	0° ~ 90°
	Rotate	0° ~ 360°
Connectors	Power	PoE (IEEE 802.3af)
	Ethernet	Ethernet (10/100 Base-T), RJ-45
	Audio	Built-in microphone
	Local Storage	Micro SD card slot (SD/SDHC, SD version 2.0 only, Class 10) * SDXC and UHS-I card types are not supported.
LED Indicator		3 LEDs: Link, Power, Status
General		
Environment Temperature		-30 °C ~ 50 °C (-22 °F ~ 122 °F)
Humidity		10% to 90% (no condensation)
Power Source		PoE (IEEE 802.3af)
Max. Power Consumption		3.47 W
Dimensions	Camera Body	ø 115 x 59.2 mm
	Cable Length	1.054 m (41.5")
	Cable Diameter	ø 6.2 mm
	Maximum Connector Diameter	ø 27 mm
Weight		568 g (1.3 lb)
Ingress Protection		IP67
Vandal Resistance		IK10 for metal casing
Regulatory		CE, FCC, RCM, RoHS compliant
Power over Ethernet		
PoE Standard		PoE (IEEE 802.3af Power over Ethernet / PD)
PoE Power Supply Type		End-Span
PoE Power Output		Per Port 48V DC, 350mA. Max. 15.4 watts

Web Interface	
Installation Management	Web-based configuration
Maintenance	Firmware upgrade through Web Browser or Utility
Access from Web Browser	Camera Live View, Video Recording, Change Video Quality, Bandwidth Control, Image Snapshot, Audio, Picture in Picture, Picture and Picture, Privacy Mask, Text Overlay, Digital PTZ
Language	Arabic / Bulgarian / Czech / Danish / Dutch / English / Finnish / French / German / Greek / Hebrew / Hungarian / Indonesian / Italian / Japanese / Lithuanian / Norwegian / Persian / Polish / Portuguese / Romanian / Russian / Serbian / Simplified Chinese / Slovakian / Slovenian / Spanish / Swedish / Thai / Traditional Chinese / Turkish
Applications	
Network Storage	GV-System (GV-DVR/NVR), GV-Backup Center, GV-Recording Server, GV-VMS
Smart Device Access	GV-Eye for iOS and Android
Live Viewing	IE, Mobile App
CMS Server support	GV-Control Center, GV-Center V2, GV-Vital Sign Monitor


Note:





- Mind the following when using an inserted memory card for recording:
 - Recorded data on the memory card can be damaged or lost if the data are accessed while the camera is under physical shock, power interruption, memory card detachment or when the memory card reaches the end of its lifespan. No guarantee is provided for such causes.
 - The stored data can be lost if the memory card is not accessed for a long period of time. Back up your data periodically if you seldom access the memory card.
 - Memory cards are expendable and their durability varies according to the conditions of the installed site and how they are used. Back up your data regularly and replace the memory card annually.
 - To avoid power outage, it is highly suggested to apply a battery backup (UPS).
 - For better performance, it is highly suggested to use Micro SD card of MLC NAND flash, Class 10.
 - Replace the memory card when its read/write speed is lower than 6 MB/s or when the memory card is frequently undetected by the camera.
- Specifications are subject to change without notice.

Packing List

- | | |
|--|--|
| 1. Mini Fixed Rugged Dome with 2 options for its LAN connector (connector for motor vehicles or for general use) | 7. Installation sticker |
| 2. Torx Wrench | 8. Silica gel bag x 2 |
| 3. Self Tapping Screw x 2 | 9. Ferrite core for vehicle installation |
| 4. Screw Anchor x 2 | 10. Adhesive tape x 2 |
| 5. Cable stopper | 11. GV-IPCAME.264 Software DVD |
| 6. Cable Connector | 12. GV-NVR Software DVD |
| | 13. Warranty Card |

Accessories

Model No./Name	Details
GV-Mount900 Wall Mount Bracket	Dimensions: 154 x 108 x 50 mm (6.1" x 4.3" x 2") Weight: 240 g (0.53 lb)
	

Model No./Name	Details
GV-Mount910 Power Box Mount Bracket	Dimensions: 112 x 98 x 7.5 mm (4.4" x 3.9" x 0.3") Weight: 105 g (0.23 lb)
	
GV-Mount913 Power Box Mount Bracket	Dimensions: Ø 146 x 7.5 mm (Ø 5.7" x 0.3") Weight: 180 g (0.4 lb)
	
GV-Mount918 Wall Mount Bracket for MFD/MDR/EFD/EDR	Dimensions: Ø 145 x 117 x 96 mm (Ø 5.71 x 4.60 x 3.78") Weight: 350 g (0.77 lb)
	
GV-PA191 PoE Adapter	Dimensions (H x W x D): 43 x 69 x 40 mm (1.69" x 2.72" x 1.57") Weight: 130 g (0.29 lb)
	
GV-POE Switch	The GV-POE Switch is designed to provide power along with network connection for IP devices. The GV-POE Switch is available in various models with different numbers and types of ports.