

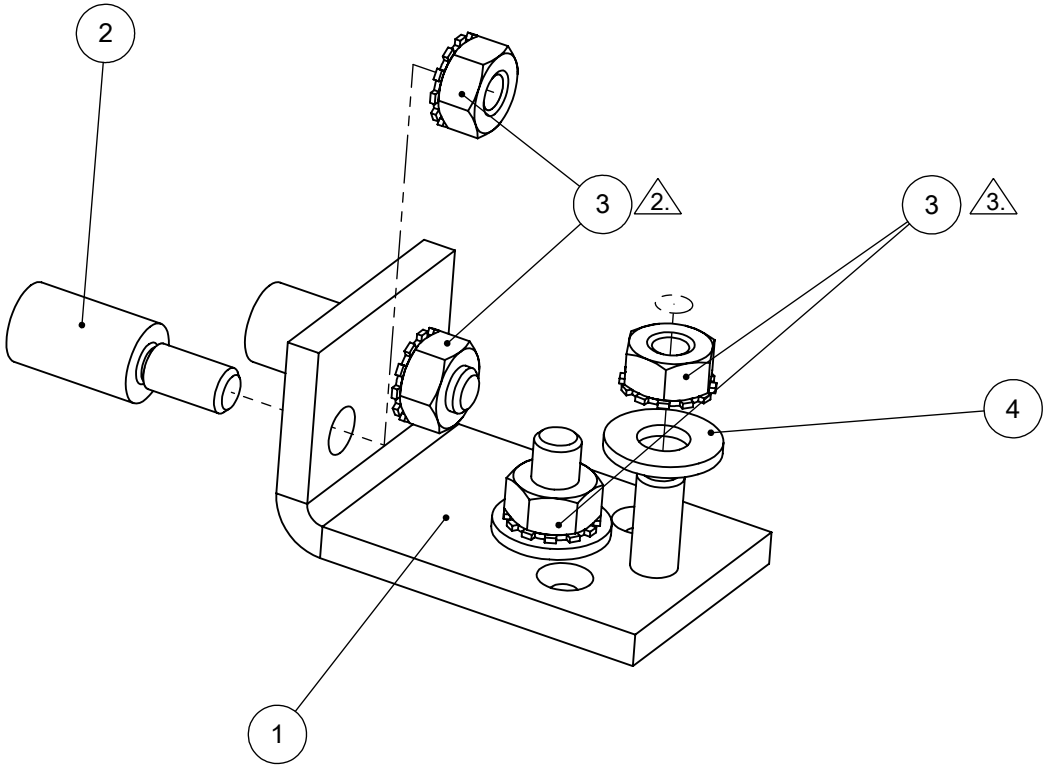
NOTES: (UNLESS OTHERWISE SPECIFIED)

1. CONFORM TO ALL APPLICABLE TELECT WORKMANSHIP STANDARDS.

2. TORQUE TO 40 INCH POUNDS

3. HAND TIGHT ONLY

ITEM NO.	PART NUMBER	QTY.
1	134152	1
2	128153	2
3	116136	4
4	H10024-001	2

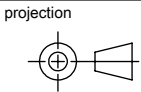


A1	TEX3746A	REPLACED 106376 WITH H10024-001	12/17/2012	DF
REV	ECO	DESCRIPTION	DATE	BY
drawing no 600CB1X-2PK		fabrication drawing BUS BAR: LOAD STRAP KIT, 2 POLE, 1/4-20, 5/8 SPACING	rev A1	units inch

designed by G. MCFADDEN	date 11/11/2007
drawn by G. MCFADDEN	date 1/14/2008

tolerances (unless otherwise specified)		hole size: ±.005 angularity: ±1°
.X	±.060	
.XX	±.020	
.XXX	±.010	

sheet	sheet size	scale	project	projection
1 of 1	B	NTS	P116	



Telect