

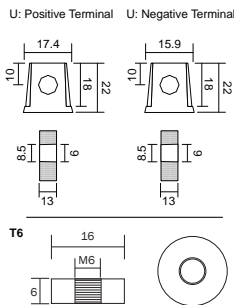


### Features

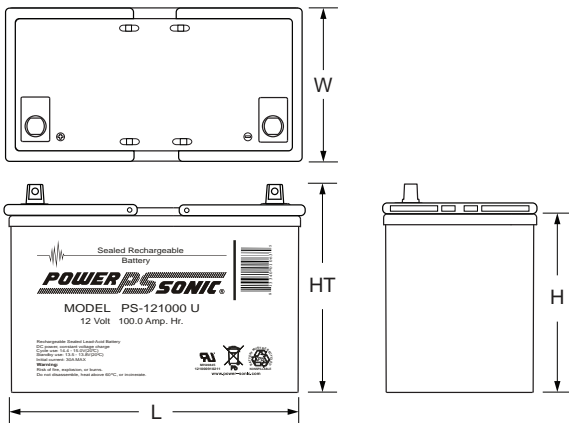
- Absorbent Glass Mat (AGM) technology for superior performance
- Valve regulated, spill proof construction allows safe operation in any position
- Power/volume ratio yielding unrivaled energy density
- Rugged impact resistant ABS case and cover (UL94-HB)
- Integrated ABS carrying handles for ease of movement
- Approved for transport by air. D.O.T., I.A.T.A., F.A.A. and C.A.B. certified
- U.L. recognized under file number MH 20845

### Terminals: in (mm)

- U: Universal terminals: Heavy-duty posts with 'nut & bolt' fasteners
- T6: Threaded insert w. 6 mm stud fastener



### Physical Dimensions: in (mm)



**L:** 12.00 (305) **W:** 6.60 (168) **H:** 8.15 (207) **HT:** 8.98 (228)

Tolerances are +/- 0.04 in. (+/- 1mm) and +/- 0.08 in. (+/- 2mm) for height dimensions. All data subject to change without notice.

### Performance Specifications

**Nominal Voltage** ..... 12 volts (6 cells)

#### Nominal Capacity

20-hr. (5A to 10.50 volts) .....	100.0 AH
10-hr. (9.2A to 10.50 volts) .....	92.0 AH
5-hr. (15.8A to 10.20 volts) .....	79.0 AH
1-hr. (55.2A to 9.00 volts) .....	55.2 AH
15-min. (175A to 9.00 volts) .....	43.8 AH

**Approximate Weight** ..... 68.00 lbs. (30.84 kg)

**Energy Density (20-hr. rate)** ..... 1.86 W-h/in<sup>3</sup> (113.45 W-h/l)

**Specific Energy (20-hr. rate)** ..... 17.65 W-h/lb (38.91 W-h/kg)

**Internal Resistance (approx.)** ..... 5 milliohms

**Max Discharge Current (7 Min.)** ..... 300.0 amperes

**Max Short-Duration Discharge Current (10 Sec.)** .. 750.0 amperes

#### Shelf Life (% of nominal capacity at 68°F (20°C))

1 Month .....	97%
3 Months .....	91%
6 Months .....	83%

#### Operating Temperature Range

Charge .....	-4°F (-20°C) to 122°F (50°C)
Discharge .....	-40°F (-40°C) to 140°F (60°C)

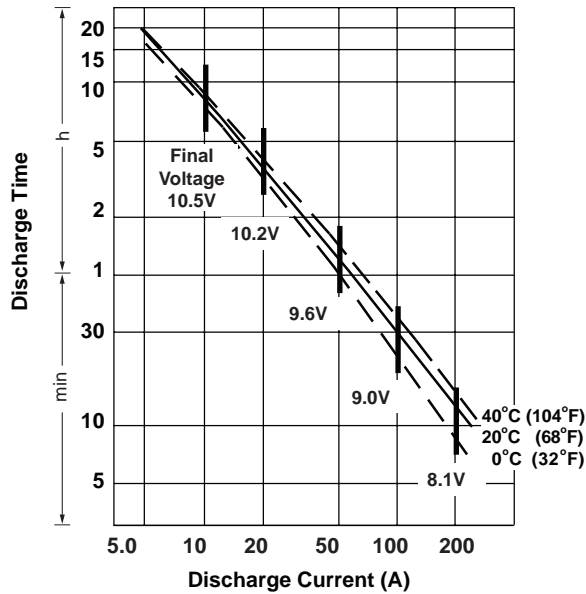
**Case** ..... ABS Plastic

**Power-Sonic Chargers**.....PSC-1210000A-C

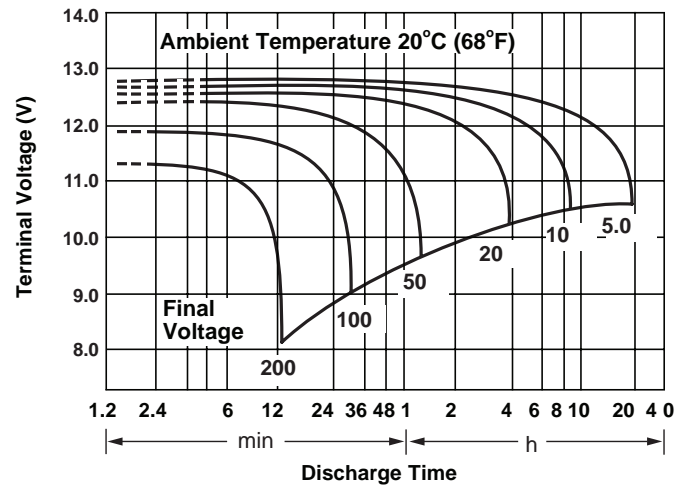
**Constant Power Discharge Ratings**

MODEL	FINAL VOLTAGE	WATTS PER CELL @ 25° C						
		5 MIN	10 MIN	15 MIN	20 MIN	30 MIN	45 MIN	60 MIN
PS-121000	1.75	550	395	312	267	207	152	128
	1.70	586	413	324	277	212	155	129
	1.67	605	421	330	283	215	158	130

Discharge Time vs. Discharge Current



Discharge Characteristics



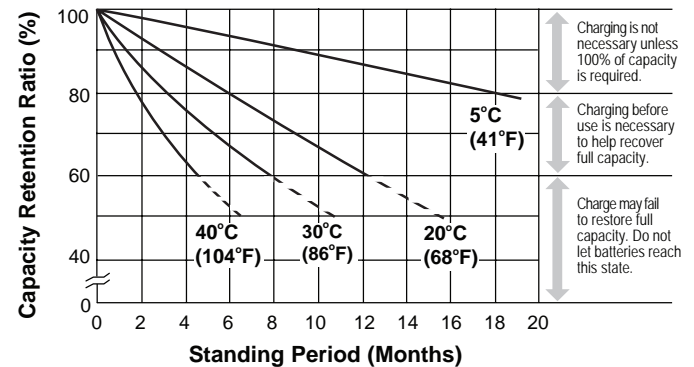
**Charging**

Cycle Applications: Limit initial current to 20A. Charge until battery voltage (under charge) reaches 14.4 to 14.7 volts at 68°F (20°C). Hold at 14.4 to 14.7 volts until current drops to under 1A. Battery is fully charged under these conditions, and charger should be disconnected or switched to "float" voltage.

"Float" or "Stand-By" Service: Hold battery across constant voltage source of 13.5 to 13.8 volts continuously. When held at this voltage, the battery will seek its own current level and maintain itself in a fully charged condition.

Note: Due to the self-discharge characteristics of this type of battery, it is imperative that they be charged within 6 months of storage, otherwise permanent loss of capacity might occur as a result of sulfation.

Shelf Life & Storage



**Chargers**

Power-Sonic offers a wide range of chargers suitable for batteries up to 100AH. Please refer to the Charger Selection Guide in our specification sheets for "C-Series Switch Mode Chargers" and "Transformer Type A and F Series". Please contact our Technical department for advice if you have difficulty in locating suitable models.

**Further Information**

Please refer to our website [www.power-sonic.com](http://www.power-sonic.com) for a complete range of useful downloads, such as product catalogs, material safety data sheets (MSDS), ISO certification, etc..

**Contact Information**

[www.power-sonic.com](http://www.power-sonic.com)

DOMESTIC SALES  
Tel: +1-619-661-2020  
Fax: +1-619-661-3650  
national-sales@power-sonic.com

CUSTOMER SERVICE  
Tel: +1-619-661-2030  
Fax: +1-619-661-3648  
customer-service@power-sonic.com

TECHNICAL SUPPORT  
Tel: +1-619-661-2020  
Fax: +1-619-661-3648  
support@power-sonic.com

INTERNATIONAL SALES  
Tel: +1-650-364-5001  
Fax: +1-650-366-3662  
international-sales@power-sonic.com