

## DOOR & WINDOW CONTACTS / **SURFACE MOUNT**

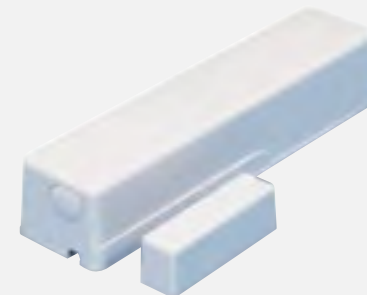


### Crystal

- 10+ year maximum life battery for fewer changes and callbacks
- Crystal transmitter
- Two-Axis sensing allows for easy mounting in tight spaces
- Optimized internal antenna design increases range performance
- Tamper switch
- Optional external supervised contact
- Dimensions (LxWxH): 3.2 x 1.5 x 1.0 in.

#### Ordering Information

<b>60-362N-10-319.5 (NX-650N)</b>	Crystal Door/Window Sensor, White
<b>60-362N-11-319.5 (NX-651N)</b>	Crystal Door/Window Sensor, Brown
<b>60-362N-10-319.5-PK</b>	Crystal Door/Window Sensor, White, 25-Pack



### SAW

- SAW transmitter
- Installs on anything that opens and closes
- For low and average traffic areas
- Transmitter range = 500' open air
- Batteries are easy to replace
- Dimensions (LxWxH): 4.5 x 1.2 x 0.9 in.

#### Ordering Information

<b>60-670-95R (NX-450)</b>	SAW Door/Window Sensor, White
<b>60-670-11-95R (NX-451)</b>	SAW Door/Window Sensor, Brown
<b>60-670-95R-PK</b>	Saw Door/Window Sensor, White, 25-Pack