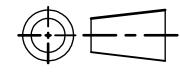
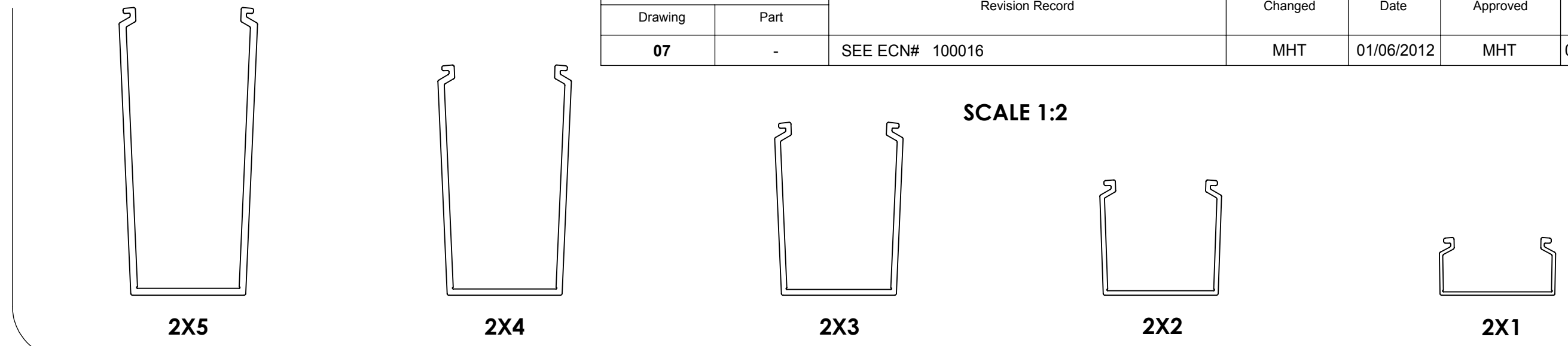
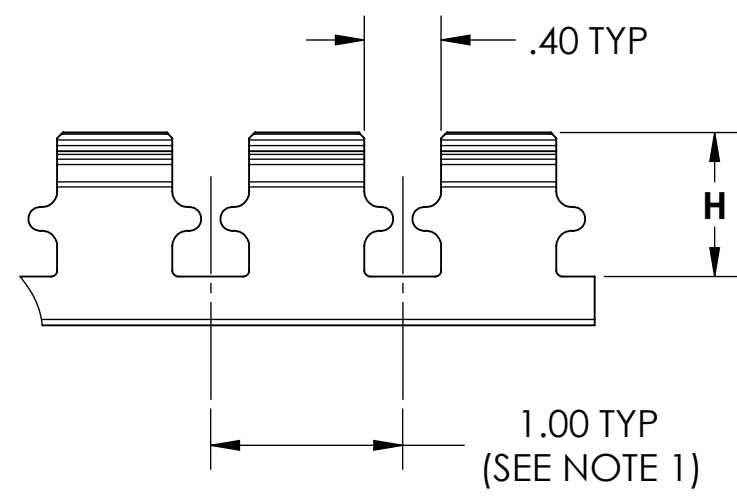


SW2010



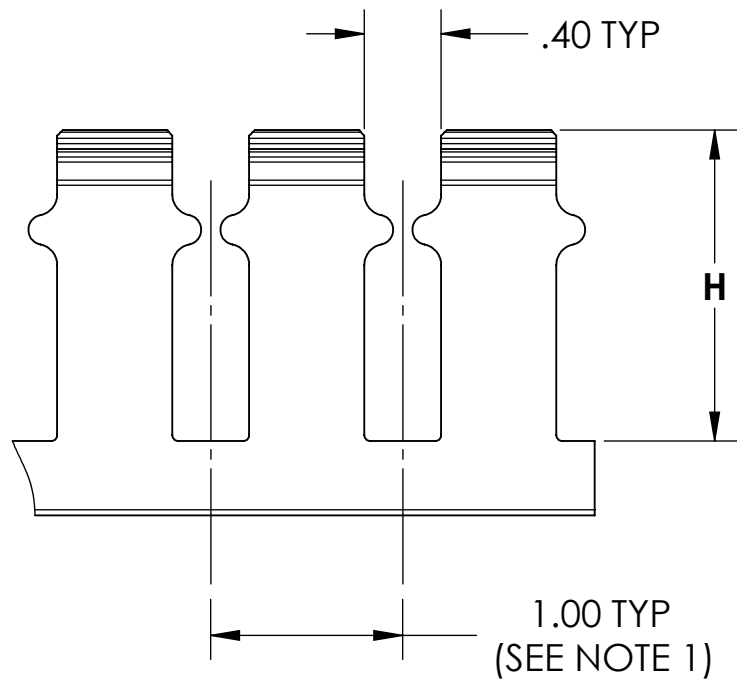
| Revision level | | Revision Record | Changed | Date | Approved | Date |
|----------------|------|-----------------|---------|------------|----------|------------|
| Drawing | Part | | | | | |
| 07 | - | SEE ECN# 100016 | MHT | 01/06/2012 | MHT | 02/06/2012 |

**SLOTTED WALL DUCT
TYPE "SL2X1"**

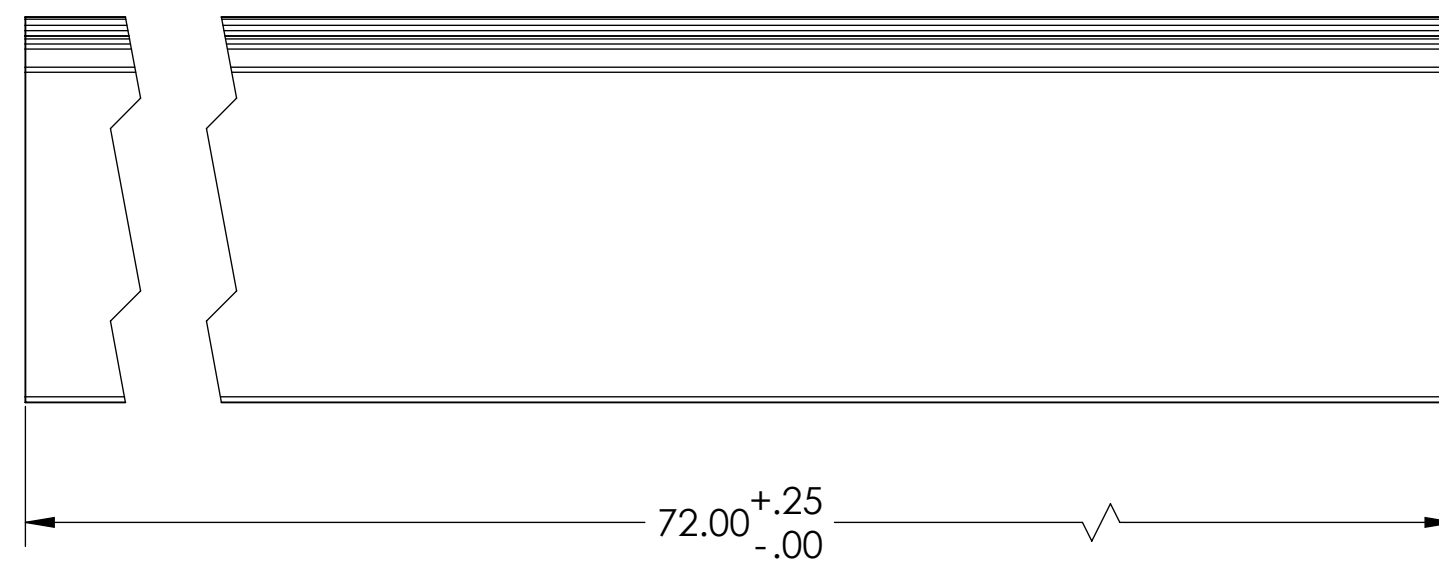


SCALE 1:2

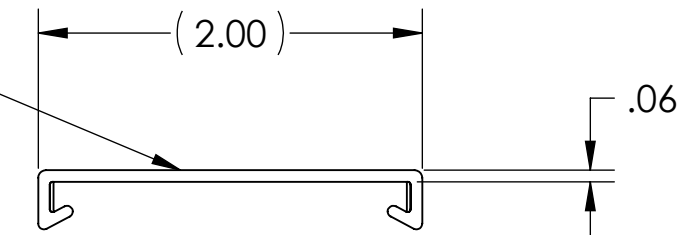
**SLOTTED WALL DUCT
TYPE "SL2X2" "SL2X3" "SL2X4"**



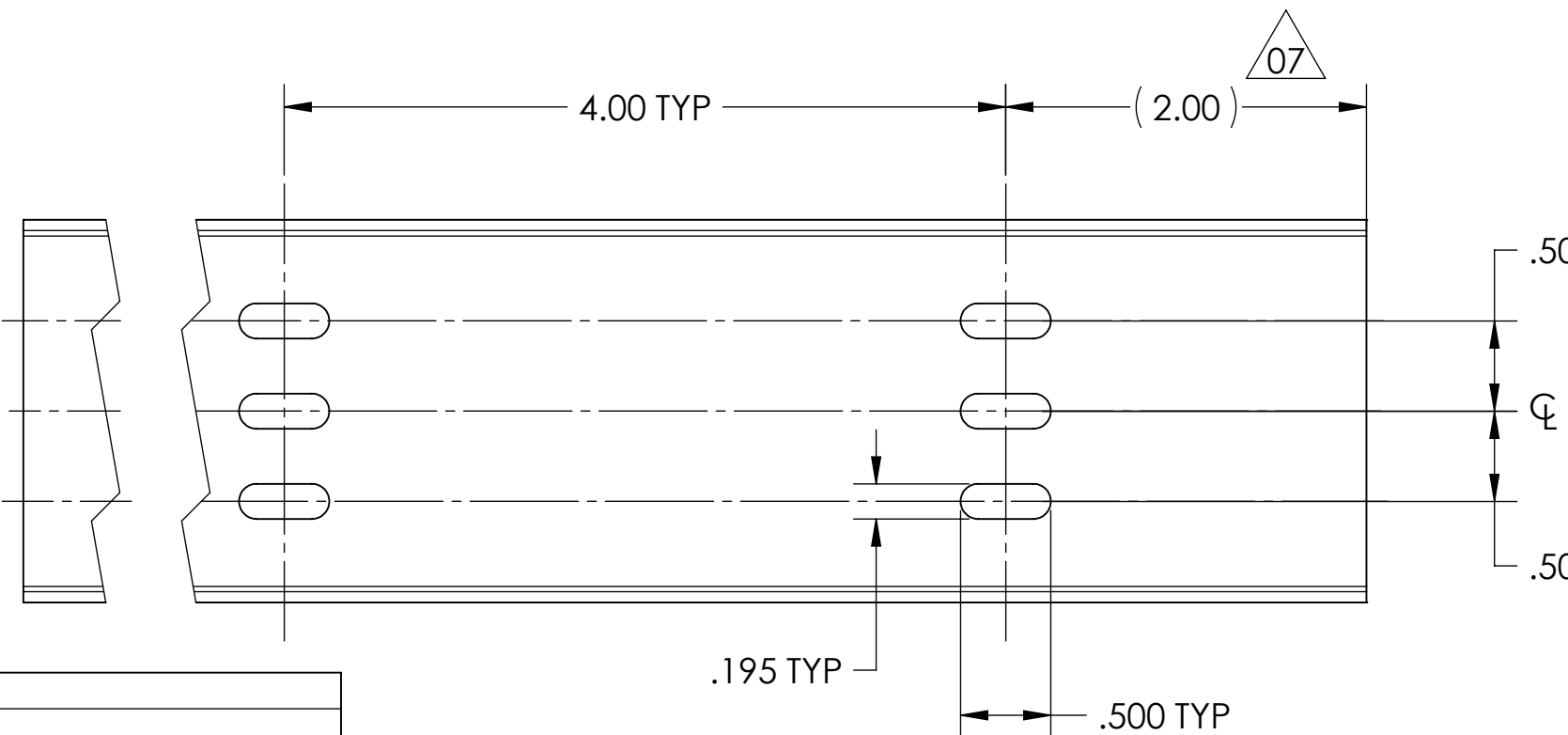
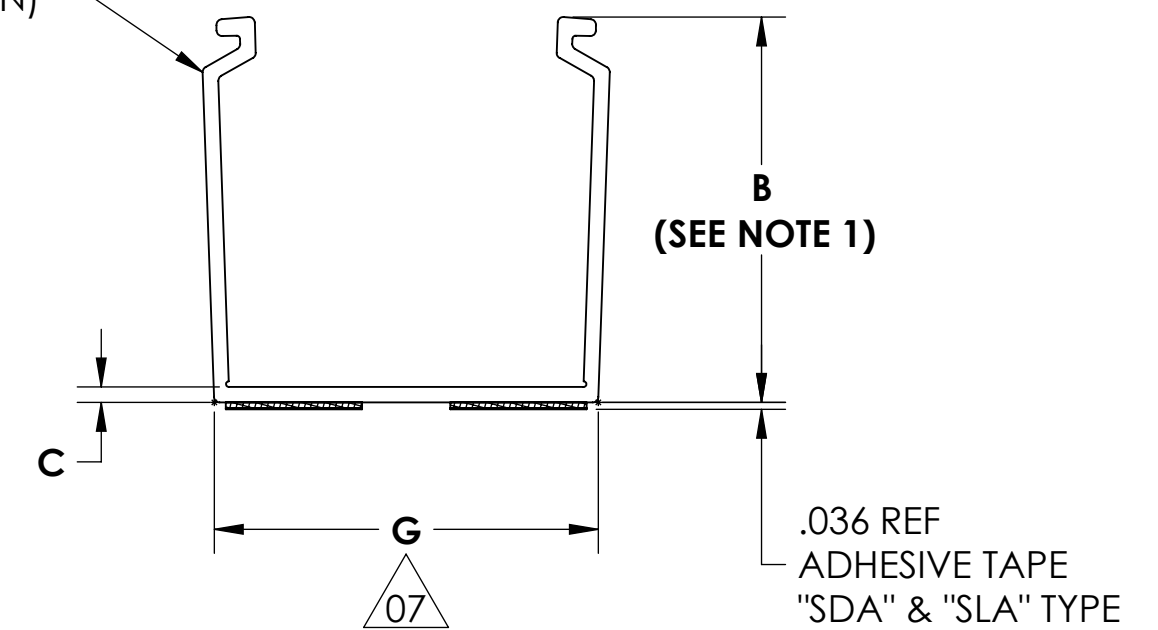
**SOLID WALL DUCT
TYPE "SD"**



COVER WITH
REMOVABLE
PROTECTIVE FILM



DUCT
(2X2 SHOWN)



| DUCT SIZE (WxH) | | DUCT AREA (Sq. In.) | | 50% WIRE FILL CAPACITY | | | | | | | | |
|-----------------|-------|---------------------|-----|------------------------|-------|-------|-------|-------|--------------------------------|-------------|--------------|--|
| | | | | WIRE O.D. | | | | | TWISTED PAIR 24 AWG UNSHIELDED | | | |
| | | | | 12AWG | 14AWG | 16AWG | 18AWG | 22AWG | 4 Pr. Cat 5e | 4 Pr. Cat 6 | 4 Pr. Cat 6a | |
| 2X1 | 1.678 | 43 | 39 | 55 | 68 | 84 | 253 | 23 | 19 | 9 | | |
| 2X2 | 3.438 | 88 | 80 | 113 | 140 | 171 | 518 | 47 | 38 | 17 | | |
| 2X3 | 5.122 | 131 | 120 | 169 | 209 | 255 | 772 | 69 | 57 | 26 | | |
| 2X4 | 6.829 | 174 | 160 | 225 | 278 | 341 | 1030 | 92 | 76 | 35 | | |
| 2X5 | 8.488 | 217 | 199 | 280 | 346 | 423 | 1280 | 115 | 94 | 43 | | |

| TYPE NUMBER | DESCRIPTION | MOUNTING METHOD | B (SEE NOTE 1) | C | G | H |
|-------------|-----------------------|-----------------|--------------------|-------------------|----------------|-------------|
| TC2 | COVER | - | - | - | - | - |
| SD2X1 | SOLID DUCT | SCREW | 1.004 +.020/-0.015 | .060 ±.005 | 2.000 +/--.025 | - |
| SD2X2 | " | " | 2.008 +.025/-0.020 | .080 ±.005 | 2.000 +/--.025 | - |
| SD2X3 | " | " | 3.009 +.035/-0.020 | .100 ±.007 | 2.000 +/--.029 | - |
| SD2X4 | " | " | 4.008 +.045/-0.020 | .110 +.008/-0.010 | 2.000 +/--.031 | - |
| SD2X5 | " | " | 5.007 +.055/-0.020 | .120 +.009/-0.015 | 2.000 +/--.033 | - |
| SDA2X1 | SOLID DUCT W/ADHES. | ADHESIVE TAPE | 1.004 +.020/-0.015 | .060 ±.005 | 2.000 +/--.025 | - |
| SDA2X2 | " | " | 2.008 +.025/-0.020 | .080 ±.005 | 2.000 +/--.025 | - |
| SDA2X3 | " | " | 3.009 +.035/-0.020 | .100 ±.007 | 2.000 +/--.029 | - |
| SDA2X4 | " | " | 4.008 +.045/-0.020 | .110 +.008/-0.010 | 2.000 +/--.031 | - |
| SDA2X5 | " | " | 5.007 +.055/-0.020 | .120 +.009/-0.015 | 2.000 +/--.033 | - |
| SL2X1 | SLOTTED DUCT | SCREW | 1.004 +.020/-0.015 | .060 ±.005 | 2.000 +/--.025 | .750 ±.010 |
| SL2X2 | " | " | 2.008 +.025/-0.020 | .080 ±.005 | 2.000 +/--.025 | 1.620 ±.015 |
| SL2X3 | " | " | 3.009 +.035/-0.020 | .100 ±.007 | 2.000 +/--.029 | 2.600 ±.015 |
| SL2X4 | " | " | 4.008 +.045/-0.020 | .110 +.008/-0.010 | 2.000 +/--.031 | 3.600 ±.015 |
| SL2X5 | " | " | 5.007 +.055/-0.020 | .120 +.009/-0.015 | 2.000 +/--.033 | 4.600 ±.015 |
| SLA2X1 | SLOTTED DUCT W/ADHES. | ADHESIVE TAPE | 1.004 +.020/-0.015 | .060 ±.005 | 2.000 +/--.025 | .750 ±.010 |
| SLA2X2 | " | " | 2.008 +.025/-0.020 | .080 ±.005 | 2.000 +/--.025 | 1.620 ±.015 |
| SLA2X3 | " | " | 3.009 +.035/-0.020 | .100 ±.007 | 2.000 +/--.029 | 2.600 ±.015 |
| SLA2X4 | " | " | 4.008 +.045/-0.020 | .110 +.008/-0.010 | 2.000 +/--.031 | 3.600 ±.015 |
| SLA2X5 | " | " | 5.007 +.055/-0.020 | .120 +.009/-0.015 | 2.000 +/--.033 | 4.600 ±.015 |

Notes
1) BOTH SIDES ALIKE WITHIN .015



Material

PVC
AVAILABLE IN WHITE,
GRAY, BLACK, OR BLUE
CONSULT FACTORY FOR
OTHER COLORS
RoHS COMPLIANT

Units

inches
Dimension without tolerances
details to:
.xxxx = ±.0005
.xxx = ±.005
.xx = ±.01
.x = ±.03
None = ±.06
∠ = ±0.5°

The copyright of this drawing is reserved by HellermannTyton. It is issued on condition that it is not reproduced, copied, or disclosed to a third party, either wholly or in part, without the consent of HellermannTyton.

| | | | | | | |
|--|-----|------------|------------------------|--|----------------|-----------|
| Drawn | KAC | 06/18/2009 | Article/Type-No | SEE CHART | Scale | 1:1 |
| Approved | | | Title | 2" WIDE SD, SDA, SL, SLA DUCT WITH COVER | Project Number | PRP07-021 |
| HellermannTyton | | | Drawing-No | DT07-021-202CST | Format | C |
| North America Email: corp@htamericas.com Web: www.hellermann.tyton.com | | | Pre-Production : Phase | | Sheet | 1/1 |