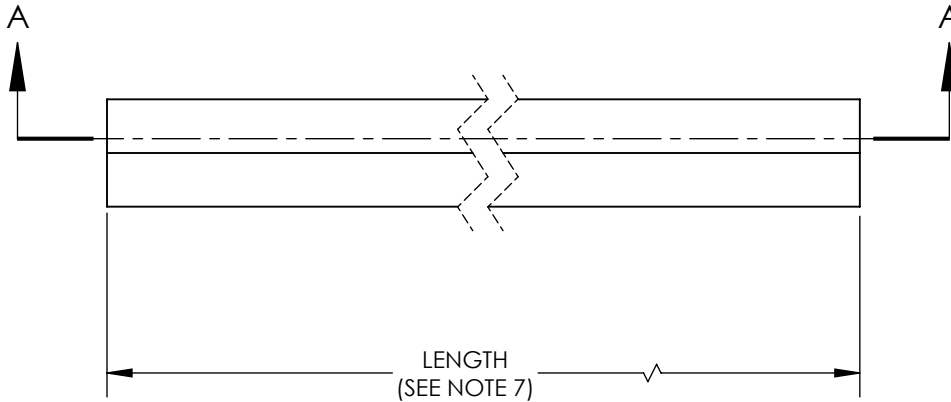


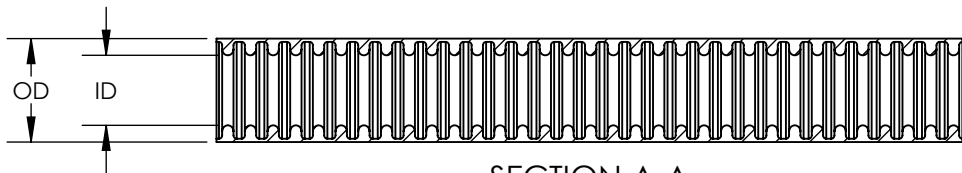
SW2014



Revision level			Revision Record	Changed	Date	Approved	Date
Drawing	State	Part					
<b>00.0</b>	<b>Design Release</b>		SEE ECN# 013638	GRW	11/30/2016	KAC	11/30/2016



LENGTH  
(SEE NOTE 7)



SECTION A-A

NOTES:

1. FLAMMABILITY UL94 V0
2. OPERATING TEMPERATURE -40° F TO +212° F (-40° C TO +100° C)
3. RoHS
4. HF
5. USE WITH HELAGUARD LTP OR LTPUL SERIES METALLIC FITTINGS FOR IP66 + IP67 + IP68 + IP69 RATINGS
6. MANUFACTURED TO UL360 REQUIREMENTS
7. CONSULT FACTORY OR WEBSITE FOR AVAILABLE LENGTHS

Conduit Nominal Size		HellermannTyton Item Number	Man'f Part Reference	Outside Dimension (OD)		Inside Dimension (ID)		Minimum Bend Radius	
inches	mm			in	mm	in	mm	in	mm
1/4	10.0	LTPPU10#-25M	LTPPU10#	0.46	11.8	0.28	7.0	1.38	35.0
5/16	12.0	LTPPU12#-25M	LTPPU12#	0.56	14.2	0.39	10.0	1.57	40.0
3/8	16.0	LTPPU16#-25M	LTPPU16#	0.70	17.8	0.50	12.6	1.77	45.0
1/2	20.0	LTPPU20#-25M	LTPPU20#	0.83	21.1	0.63	16.0	2.56	65.0
3/4	25.0	LTPPU25#-25M	LTPPU25#	1.04	26.4	0.83	21.0	3.94	100.0
1	32.0	LTPPU32#-25M	LTPPU32#	1.30	33.1	1.04	26.5	5.31	135.0
1-1/4	40.0	LTPPU40#-10M	LTPPU40#	1.65	41.8	1.39	35.4	6.89	175.0
1-1/2	50.0	LTPPU50#-10M	LTPPU50#	1.89	47.9	1.59	40.4	9.05	230.0
2	63.0	LTPPU63#-10M	LTPPU63#	2.35	59.7	2.03	51.6	11.02	280.0

Material <b>GALVANIZED STEEL &amp; POLYURETHANE</b>	Units: <b>inches</b>	The copyright of this drawing is reserved by HellermannTyton. It is issued on condition that it is not reproduced, copied, or disclosed to a third party, either wholly or in part, without the consent of HellermannTyton.	Drawn	GRW	11/30/2016	Article/Type-No	LTPPU SERIES		Scale		
	Dimension without tolerances details to: .xxxx = ±.0005 .xxx = ±.005 .xx = ±.01 .x = ±.03 None = ±.06 ∠ = ±0.5° Dimension Formatted in[mm]		Approved	KAC	11/30/2016	Title	<b>HELAGUARD FLEXIBLE METALLIC GALVANIZED STEEL CONDUIT, LIQUID-TIGHT JACKETED POLYURETHANE COVER</b>		Project Number PRP 16-1964		
	<b>HellermannTyton</b> North America Email: corp@htamericas.com Web: www.hellermann.tyton.com			Drawing-No	PRODUCTION : Phase		<b>16-1964-001-CSU</b>		Format	AH	
				Sheet	1/1						