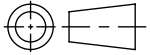
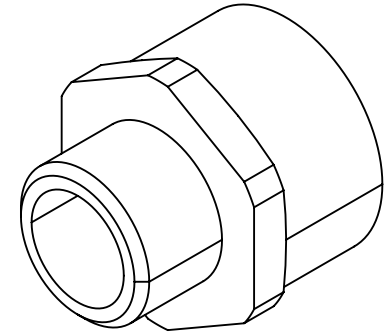
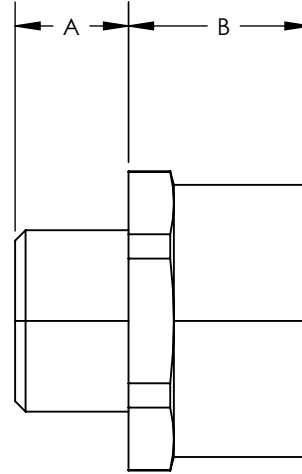
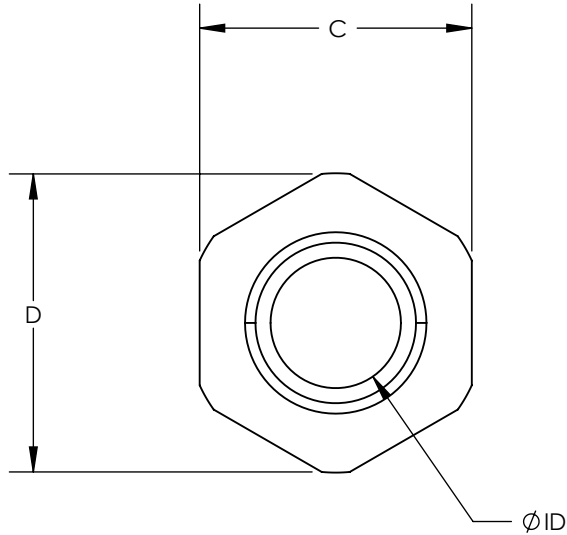


SW2014



Revision level			Revision Record	Changed	Date	Approved	Date
Drawing	State	Part					
00.0	Design Release		SEE ECN# 013630	GRW	11/28/2016	KAC	11/28/2016



NOTES:

1. OPERATING TEMPERATURE -58° F TO +57° F (-50° C TO +300° C)
2. RoHS
3. HF
4. IP68 WITH SUITABLE SEALING WASHER

HellermannTyton Part Number	Manufacturer Reference Number	External (Male) Thread	Internal (Female) Thread	Design Type	Dimensions									
					A		B		C		D		ID	
					in.	mm	in.	mm	in.	mm	in.	mm	in.	mm
B-050-M20	B-050-M20	1/2" NPT	M20	2	0.51	13.0	0.62	15.5	1.03	26.4	0.94	24.0	0.57	14.4
B-075-M20	B-075-M20	3/4" NPT	M20	1	0.59	15.0	0.18	4.5	1.27	31.9	1.14	29.0	0.72	18.4
B-075-M25	B-075-M25	3/4" NPT	M25	2	0.59	15.0	0.31	8.0	1.27	31.9	1.14	29.0	0.76	19.4
B-100-M32	B-100-M32	1" NPT	M32	1	0.63	16.0	0.26	6.5	1.52	38.5	1.38	35.0	1.20	30.4

Material
NICKEL PLATED BRASS

Units: inches

Dimension without
tolerances details to:
.xxxx = ±.0005
.xxx = ±.005
.xx = ±.01
.x = ±.03
None = ±.06
∠ = ±0.5°
Dimension Formatted in [mm]

The copyright of this
drawing is reserved by
HellermannTyton. It is
issued on condition that it is
not reproduced, copied, or
disclosed to a third party,
either wholly or in part,
without the consent of
HellermannTyton.

Drawn GRW 11/28/2016

Approved KAC 11/28/2016

HellermannTyton
North America
Email: corp@htamericas.com
Web: www.hellermann.tyton.com

Article/Type-No CNV SERIES

Title **HELAGUARD THREAD CONVERTER,
METRIC INTERNAL THREADS AND NPT
EXTERNAL THREADS**

Drawing-No PRODUCTION : Phase

16-1973-001-CSU

Scale

Project Number

PRP 16-1973

Format AH

Sheet 1/1