

peace of mind.



Easily Expandable

The iVision+ allows for multiple stations, making it a perfect fit to monitor up to two residential or commercial doors, from the comfort of up to four different locations.



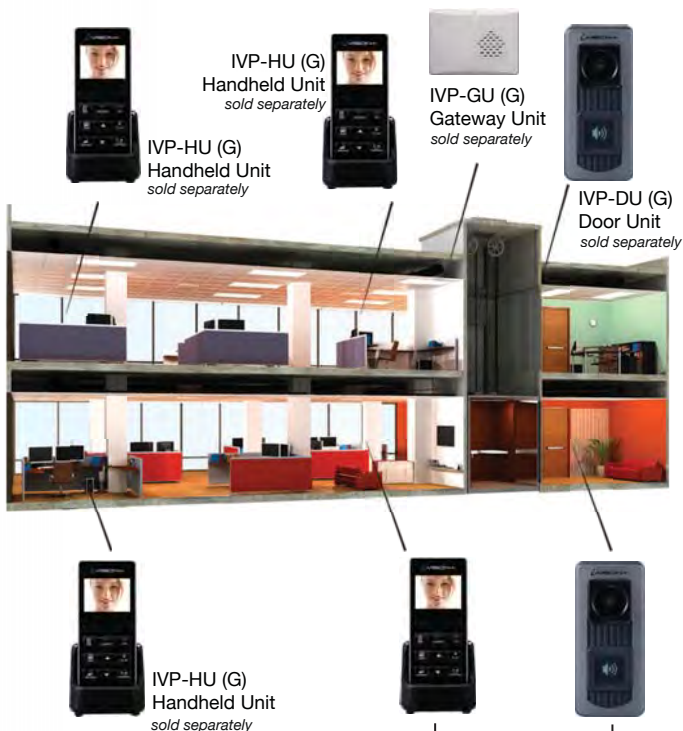
Up to 4 units



Up to 2 units



Up to 2 units



iVision+ standard package IVP-DH (G)
Including one Handheld Unit and one Door Unit



Battery Powered

Both the Door Unit and Handheld Unit are battery powered, allowing for up to 100m. transmission range, line of sight. The Handheld Unit comes with a battery pack and charging cradle, while the door unit runs on 3 AA batteries. (Not included)



Optional Gateway Unit

The optional Gateway unit enhances the iVision+ system by providing both an additional chime for the door bell and also the possibility to remotely open the door. For the remote door opening application, the gateway unit has to be integrated with the door locking system¹, and it will then be able to release the lock when the 'Open Door' button is pressed on the iVision+ Handheld Unit (see illustration below).



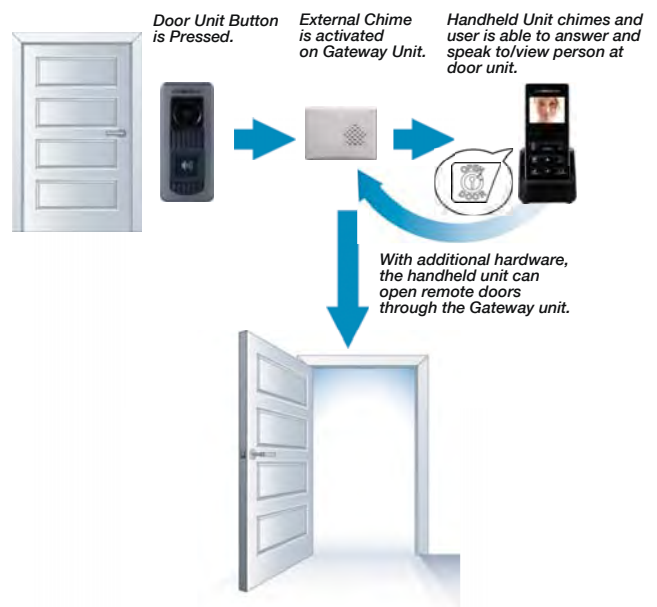
IVP-GU (G) Gateway Unit
sold separately

¹ Third party door lock sold separately



Door Release Capability

When integrated with door locking hardware², the Gateway Unit will release the lock when the 'Open Door' button is pressed on the iVision+ Handheld Unit.



² Third party door lock sold separately

Advanced WIRELESS Intercom System With Video

iVISION+



Accepts Multiple Stations



Battery Powered / Wireless System



Door Release Function (Option)

Specifications

Features

Model	Description
IVP-DH (G)	Standard iVision+ package including one Handheld Monitor Unit – IVP-HU (G) and one Door Unit – IVP-DU (G).

Model: OPTEX iVision+ IVP-HU (G) Handheld Monitor Unit	
Operating Temperature	0° to 40°C
Operating Humidity	< 90% RH (no condensation)
Dust/Water Protection	N/A (Indoor Use Only)
Radiowave Frequency	2.4 GHz
Power	Power Adaptor 5.5V

Model: OPTEX iVision+ IVP-DU (G) Door Camera Unit	
Operating Temperature	-20° to 50°C
Operating Humidity	< 90% RH (no condensation)
Dust/Water Protection	IPX4 – splash proof for rain and outdoor condition
Radiowave Frequency	2.4 GHz
Camera/Lighting Unit	Color vision / IR lighting LED
Power	Battery (3 AA batteries) or AC/DC 10-24V
Battery Life Expectancy	12 month*
Storage Temperature	-30° to 70°C

* Based on 3 activations (approx. 10sec) per day

ADDITIONAL ACCESSORY

Model: OPTEX iVision+ IVP-GU (G) Gateway Unit	
Operating Temperature	0° to 40°C
Operating Humidity	< 90% RH (no condensation)
Dust/Water Protection	N/A (Indoor Use Only)
Radiowave Frequency	2.4 GHz
Power	10-24V AC/DC

NOTE: Specifications may change without notice.
IVP-DH (G), IVP-HU (G), IVP-DU (G) and IVP-GU (G) are not theft prevention units.
OPTEX cannot be held liable for a theft, should it occur. All right reserved by OPTEX CO., LTD

iVISION+ Advanced wireless Intercom system with video

SYSTEM FEATURES

- Transmission range up to 100m, line of sight
- Digital voice/image transmission
- Multi-unit expandability up to four handheld units – IVP-HU (G) and two door units – IVP-DU (G)
- Snap/auto image recording
- Active browse function allows user to activate camera before the door unit button is pressed (the door unit needs to be powered externally for this function)
- Door release with 'Open Door' button ¹

IVP-HU (G) HANDHELD UNIT FEATURES

- 2.4 inch LCD Monitor
- Wall mountable charging cradle with rechargeable battery
- Maximum four units to a system
- Micro-USB port PC connection allows user to view and download images (micro-USB cable not included, non Mac compliant software)

IVP-DU (G) DOOR UNIT FEATURES

- Adjustable camera angle
- Battery operated capability (Avg. 1yr. battery life ², 3x AA batteries not included)
- Hardwired Capability (AC/DC, 10-24V)
- Auto day (colour)/night (IR) Vision
- Maximum two units to a system
- Fluorescent push button
- Splash proof for rain and outdoor conditions

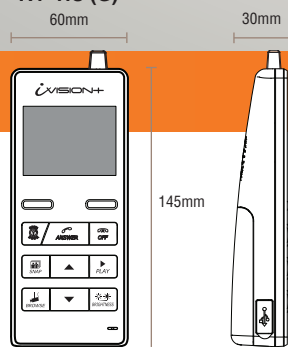
IVP-GU (G) GATEWAY UNIT (optional)

- Additional wireless chime for door unit system
- Remote door release capability when integrated with a door locking system ¹ (wired connection)

¹Additional door locking hardware required for door release feature

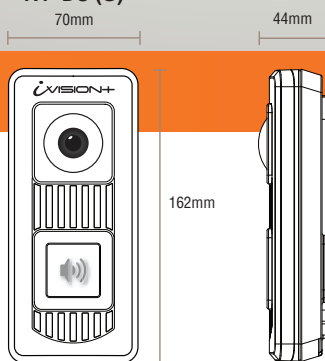
²Based on three activations per day

IVP-HU (G)

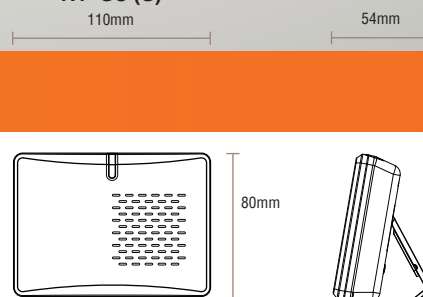


Unit: mm

IVP-DU (G)



IVP-GU (G)



OPTEX (EUROPE) LIMITED

EMEA Headquarters
T: +44 (0)1628 631 000
Dubai branch
T: +971 (0)4 501 53 94
E: marketing@optex-europe.com
www.optex-europe.com

OPTEX Security SAS

(France, Germany, Austria, Switzerland and North Africa)
OPTEX Security SAS
T: +33 (0)4 37 55 50 50
E: contact@optex-security.com
www.optex-security.com

OPTEX Security Sp. z o.o.

(Eastern Europe, CIS countries, Turkey)
Optex Security Sp. z o.o.
T: +48 (22) 598 06 60
E: optex@optex.com.pl
www.optex.com.pl

OPTEX Technologies BV

(Benelux)
OPTEX Technologies B.V.
T: +31 70 4194100
E: info@optex.nl
www.optex.nl