

## M-Series All-in-One PoE Recorder



### Features that make a difference:

- 4 or 8 PoE camera ports, no external Ethernet switch required
- Includes 4 or 8 exacqVision Start licenses (upgradeable to Professional or Enterprise)
- Up to 2TB of video storage for up to 8 IP cameras
- Monitor and control camera power usage in exacqVision client, no separate switch management software required
- Save maintenance trips by remotely power cycling individual PoE cameras
- 30 watts max per 4-ports (60 watts max for 8-ports)
- Supports PoE camera classes 4W, 7W, & 15W
- Simply plug in and record; automatically configures IP cameras for motion-based recording
- View and manage servers from Windows/Linux/MAC PCs with free client software
- View live and recorded video in any browser
- View live and recorded video on iOS or Android mobile devices with free application
- 3-Year Warranty & Software Updates

The exacq M-Series NVR makes IP CCTV easy and is perfect for surveillance systems needing up to 8 cameras. The integrated PoE ports, Video Management System and client are all contained within the 4 or 8 IP camera server; no external and costly PoE switch is needed. With the exacq Easy Connect feature Plug n Play set-up and system architecture is a reality, particularly when you choose the fully featured range of illustra cameras. Just quickly and simply connect your IP cameras direct to the exacq M-Series

### All-in-One Recorder—Easiest to Quote, Install & Service

- 4 or 8 PoE camera ports, No external Ethernet switch required
- Includes 4 or 8 exacqVision START licenses (upgradeable to Pro or Enterprise)
- Up to 2TB of video storage for up to 8 IP cameras
- Unlimited scalability by adding more recorders (Pro or Enterprise)

### Camera Power Management

- Monitor and control camera power usage in exacqVision client, no separate switch management software required
- Save maintenance trips by remotely power cycling individual PoE cameras
- 30 watts max per 4-ports (60 watts max for 8-ports)
- Supports PoE camera classes 4W, 7W, & 15W

with regular cat 5e/6 Ethernet cable. Your system will be up and running in minutes.

Better still there are no camera licenses to purchase or apply as the 4 or 8 channel system is fully licensed, this is one less thing to think about and saves even more installation time. With the choice of free local, remote, browser based and App clients, the exacq M-Series truly offers a flexible IP Video Surveillance solution to meet the requirements of a wide variety of customers.

### Easy Connect

- Simply plug in and record; automatically configures IP cameras for motion-based recording
- Easily connect to supported IP cameras

### View Video Anywhere with Free Client Software

- View and manage servers from Windows/Linux/MAC PCs with free client software
- View live and recorded video in any browser
- View live and recorded video on iOS or Android mobile devices with free application

### 3-Year Warranty & Software Updates

- Includes a 3-year hardware warranty and technical support
- 3 years of unlimited software updates to constantly increase the functionality of your exacqVision recorder

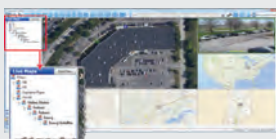
## M-Series Specifications

Settings	4-Port	8-Port
Maximum IP Cameras	4	8
Included IP Licenses	4	8
PoE Camera Ports	4	8
PoE Power (Supports PoE camera classes 4W, 7W, & 15W)	30 watts max (Shared across 4 ports)	60 watts max (Shared across 8 ports)
Alarm Inputs	4 inputs (TTL)	8 inputs (TTL)
Alarm Outputs	1 output (relay)	1 output (relay)
<b>Server</b>		
Pre-Loaded VMS Software	Start (standard) Professional, Enterprise (optional)	
Typical Video Storage Rate (Mbps)	40 Mbps	
Local Client Display Rate (FPS)	120 FPS	
Maximum Camera Resolution displayed locally	1936x1936	
Maximum Hard Drives	1	
Maximum Storage	1 TB 4-ports/2 TB 8-ports	
Monitor Output	HDMI, VGA (duplicate output)	
Operating System	Linux	
NIC	2 x1 Gbps	
USB	3 USB (1 front, 2 rear)	
Included Peripherals	Mouse	
<b>General</b>		
Dimensions	13" x 8.75" x 1.75" 33 x 22.2 x 4.4 cm	
Weight	9 lbs, 4 kg	
Regulatory	UL-Listed, CE, FCC	
Input Voltage	12V-DC, 7.5A	
Operating Temperature	40° - 95° F 4.5° - 35° C	

## Ordering Information

Product Code	Description
PE04-01T-M	M-SERIES IP POE SERVER, 4 IP CAMERA LICENSES, 1TB, LINUX
PE08-02T-M	M-SERIES IP POE SERVER, 8 IP CAMERA LICENSES, 2TB, LINUX
<b>Upgrade Licences</b>	
PRO-M-PE04	START to PRO upgrade for 4 IP channels and M-Series Servers
ENT-M-PE04	START to ENTERPRISE upgrade for 4 IP channels and M-Series servers
PRO-M-PE08	START to PRO upgrade for 8 IP channels for M-Series servers
ENT-M-PE08	START to ENTERPRISE upgrade for 8 IP channels for M-Series servers
<b>Accessories</b>	
5000-20030	15.8" rackmount shelf for exacqVision M-Series

## Related Products



exacqVision VMS Software



Exacq Mobile App



Illustra IP Cameras

## Approvals



[www.exacq.com](http://www.exacq.com)