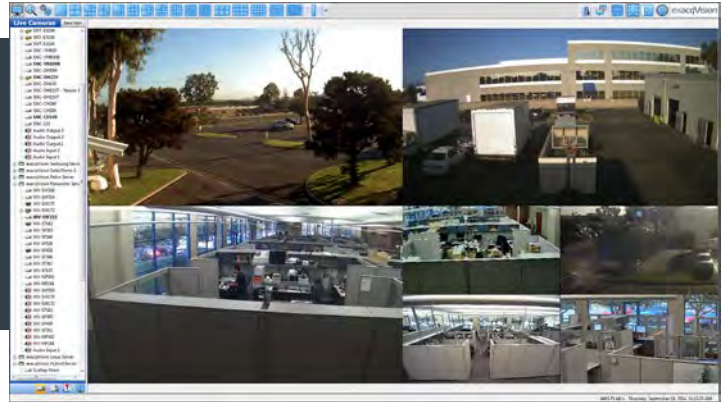


## exacqVision A-Series

Proven, Versatile  
Hybrid Network Video Recorder



### Proven Versatility and Flexibility

- Store up to 48 TB per recorder
- Record up to 64 analog cameras and 64 IP cameras per recorder
- Compatible with thousands of IP camera models
- Compatible with all exacqVision recorders and software
- Available in hybrid and IP models from desktop to 4U to meet any need
- Compatible with a variety of third-party integrations

### Proven Performance

- Run server software, client and web service all on the same system
- Continuously record up to 550 Mbps of video for high concentration of HD cameras
- Supports many simultaneous video to web/mobile clients with 900 FPS (HD)

### Proven Reliability

- Solid-state drive for Linux or Windows operating system
- Continuous duty hard drives optimized for reduced vibration and heat
- Protects against drive failure with optional RAID on 4U models

### Powerful Video Management System (VMS) Software

- Pre-loaded with exacqVision Professional software (standard)
- Easily license additional IP cameras and change out cameras
- Increase capacity by adding unlimited additional servers

### CPU Upgrade Option

- Increase local client and web server performance up to 100% with available CPU upgrade
- Ability to host Exacq tested certified software applications (CSA) such as video analytics and point-of-sale partners
- Save hardware and support expenses and rack space by loading multiple applications on one exacqVision server

### View Video Anywhere with Free Client Software

- Select the interface that works best for you
- Access live and recorded video on Windows, Linux or Mac PCs
- Use the free web service application in any modern browser
- Free Exacq Mobile app available for iOS, Android, Windows Phone 8 and Kindle Fire

### 3-Year Warranty

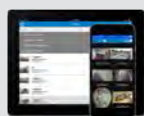
- Includes a 3-year hardware warranty
- 3 years of unlimited software updates included

ANALOG SETTINGS	2U	4U	DESKTOP
Inputs	16 (looping)/32	16 (looping)/32/48/64	8/16/32
Compression	H.264, MJPEG		
Frame Rate	480/960 (NTSC) 400/800 (PAL)	480/960/1440/1920 (NTSC) 400/800/1200/1600 (PAL)	240/480/960 (NTSC) 200/400/800 (PAL)
Alarm Inputs	16 TTL	16 TTL	8 TTL inputs
Alarm Outputs	15 TTL & 1 Relay	15 TTL & 1 Relay	3 TTL & 1 Relay
Analog Outputs	2/2	2/2/4/4	1/2/2
SERVER	2U SERVER	4U SERVER	DESKTOP SERVER
Maximum IP Cameras	64		
Included IP Licenses	8 (only 4 IP licenses available with 8-channel desktop)		
Pre-Loaded VMS Software	Professional (standard), Enterprise (optional)		
Typical Video Storage Rate (Mbps)	300 Mbps (Windows) 450 Mbps (Linux)	350 Mbps (Windows) 550 Mbps (Linux)	250 Mbps (Windows) 300 Mbps (Linux)
Local Client Display Rate (FPS)	Windows - 700 FPS (HD) Linux - 900 FPS (HD)		
Maximum Hard Drives	3	8	2
Maximum Storage	18 TB	48 TB (RAID 5 optional)	12 TB
Monitor Output	1 DVI-I + 1 DVI-D + 1 DisplayPort, max 2 simultaneous monitors		
Operating System	Windows 7 64-bit, Windows 2008 R2 (optional) Ubuntu Linux 14.04		
CPU	Gen 3 Intel Core i3, Intel Core i5 or i7 (optional)		
RAM	4 GB, 8 GB (optional)		
NIC	2		
USB	6 x USB 2.0, 2 x USB 3.0		
DVD	External (optional)	External (optional)	Internal (included)
Serial	1		
Audio Outputs	1		
Audio Inputs	4		
Keyboard & Mouse	Included		
GENERAL	2U SERVER	4U SERVER	DESKTOP SERVER
Dimensions	21.25" x 16.75" x 3.5" 54.7 x 42.6 x 8.9 cm	28" x 16.75" x 7" 71.2 x 42.6 x 17.8 cm	15.675" x 13" x 5.375" 39.7 x 33.1 x 14.6 cm
Weight	27 - 31 lbs. 12.3 - 14.1 kg	44 - 60 lbs. 20 - 27.3 kg	18.5 - 22 lbs. 8.4 - 10 kg
Regulatory	CE, FCC, cULus, UL Listed		
Power Supply	Single	Single (Dual Optional)	Single

## Related Products



exacqVision  
VMS Software



Exacq Mobile App



exacqVision Surveillance  
Keyboard