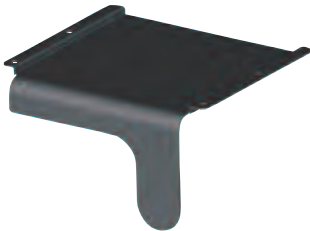




AX101469 GigaBIX Cable Management Module



AX101468 GigaBIX Patch Cord Organizer



AX101520 Horizontal Channel Plate



AX101478 GigaBIX Management Ring

## GigaBIX Cable Management Accessories

### GigaBIX Cable Management Module

The GigaBIX Cable Management Module is an accessory that allows all terminated cables to be brought from the same side (top or bottom) in a high-density GigaBIX installation (4-mount stack). The modules are stackable side-to-side and top-to-bottom with alignment features to ease installation. The modules can be used horizontally to create a horizontal management channel for more flexibility in a side-to-side patching layout using GigaBIX Patch Cords.

### GigaBIX Patch Cord Organizer

The GigaBIX Patch Cord Organizer is a metal trough that interlocks with GigaBIX Mounts to create a vertical management channel for GigaBIX Patch Cord. The Patch Cord Organizer has 6 openings per side to nicely dress the patch cords while clearing the labeling area on the GigaBIX Mount. The organizer can be assembled over Cable Management Modules in large patch cord installations. A Patch Cord Organizer Cover can be purchased separately to hide the patch cords and give a very professional and high-tech look to the installation.

### Horizontal Channel Plate

Horizontal Channel Plates are accessories that attach to the Patch Cord Organizers to create a horizontal management channel for GigaBIX Patch Cords. The plates are used in pairs and are designed to keep patch cords inside the horizontal channel.

### GigaBIX Management Ring

The GigaBIX Management Ring is a plastic ring that interlocks with the GigaBIX Mounts to create a high-density wall-mount cross-connect system. The rings are assembled in systems using cross-connect wire and have a capacity of 450 GigaBIX Cross-Connect Wires (1800-pair total).

### Features & Benefits

#### GigaBIX Cable Management Module

- Deep profile to accommodate up to 144 cables
- Open on the front for easy access to the cables during installation
- Wide cable tie holders to nicely dress cables using velcro ties
- Interlocking alignment features for quick and easy wall installation
- Can be used to create a horizontal patch cord channel for greater management flexibility.

#### GigaBIX Patch Cord Organizer

- High-capacity to provide easy access to patch cords
- Patch cord support close to the connector point to protect the integrity of the connection
- Six patch cord supports to provide visual access to all designation strips in the GigaBIX Mounts
- Staggered fingers to keep patch cords in the vertical management channel
- Optional Horizontal Channel Plates to build a center horizontal channel for better flexibility in the system
- Optional cover for better aesthetics
- Aligns with GigaBIX Mount to facilitate installation.

#### GigaBIX Management Ring

- Interlock with GigaBIX Mounts for quick and easy installation
- High-capacity allows for easier management using GigaBIX Cross-Connect
- Flexible ring fingers design makes it easy to open while providing good retention to cross-connect wires
- Double ring configuration in the center horizontal channel allows for installations of up to 1728 x 1728 ports (or 14 400 pairs).

## GigaBIX Cable Management Accessories

### Technical Specifications

#### GigaBIX Cable Management Module

- > Dimensions (H x W x D): 387 x 194 x 76 mm (15.25 x 7.63 x 3 in.).
- > Material: Steel, 14 gauge, powder paint finish, black.

#### GigaBIX Patch Cord Organizer

- > Dimensions (H x W x D): 385 x 205 x 203 mm (15.15 x 8.05 x 8 in.).
- > Material: 14 gauge, powder paint finish, black.

#### GigaBIX Patch Cord Organizer Cover

- > Dimensions (H x W x D): 374.5 x 171.5 x 38 mm (14.75 x 6.75 x 1.5 in.).
- > Material: Steel, 16 gauge, powder paint finish, black.

#### GigaBIX Management Ring

- > Dimensions (H x W x D): 30.2 x 174.8 x 76.2 mm (1.19 x 6.88 x 3.0 in.).
- > Material: Fire-retardant thermoplastic, black.

#### Horizontal Channel Plate

- > Dimensions (H x W x D): 127 x 223.5 x 197 mm (5 x 8.8 x 7.75 in.).
- > Material: Steel, 16 gauge, powder paint finish, Silver.

### Installation Tips

- > Plan cross-connect or interconnect layout to ordering and installation
- > Use BIX-BIX Patch Cords for cross-connect configurations, between equipment and distribution fields
- > Use BIX-8MOD Patch Cords for interconnect configurations, between the network equipment and the distribution field
- > Use appropriate patch cord management accessories.

### Packaging

- > GigaBIX Cable Management Modules are individually packaged in a cardboard box with two wood screws, four machine screws and one velcro tie.
- > GigaBIX Patch Cord Organizers are individually packaged in cardboard box with appropriate mounting hardware
- > GigaBIX Patch Cord Organizer Covers are individually packaged in cardboard boxes.
- > GigaBIX Horizontal Channel Plates are packaged 2 per cardboard box with appropriate mounting hardware.
- > GigaBIX Management Rings are individually packaged in polybags, 20 per master carton.

### For More Information

For any other product information call: 1-800-BELDEN-1 or visit us at [www.Belden.com](http://www.Belden.com)

All information is subject to change without notice, since Belden reserves the right to change its products as progress in engineering and manufacturing methods or other circumstances may warrant.

## Ordering Information

### GigaBIX Cable Management Accessories

DETAIL	UPC	ORDERING NUMBER
GigaBIX Cable Management Module	628575064380	AX101469
GigaBIX Patch Cord Organizer	628575064373	AX101468
GigaBIX Patch Cord Organizer Cover	628575064823	AX101521
Horizontal Channel Plate	628575064816	AX101520
GigaBIX Management Ring	628575064465	AX101478