

Step 6 – For added security, attach wire ties to the two inner holes of the bracket and the t-bar mount. Make sure to securely fasten the wire ties in place (Ref. Figure 6).

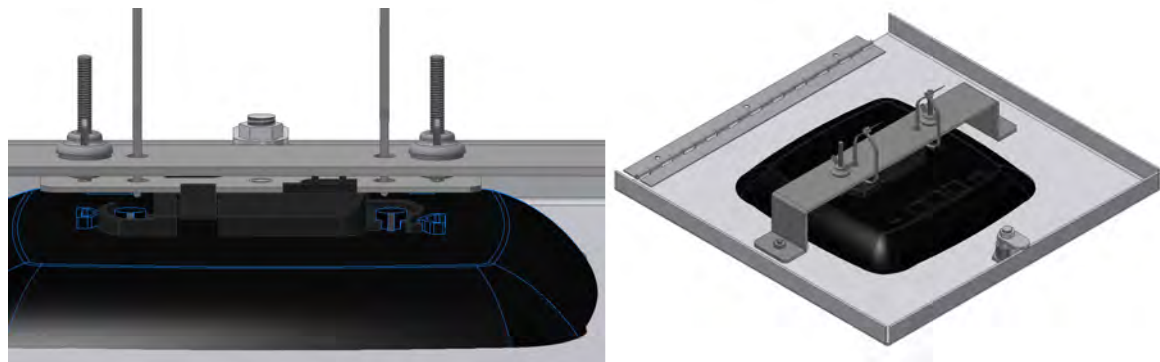


Figure 6

Step 7 – Reattach the door to the backbox in the ceiling.

Step 8 – Run the data cable through the conduit connectors located on sides of the *access point enclosure*. Pull the data cable through the conduit connector far enough to allow attachment to the access point (8" - 10"). Snap the grommet on to the cable and slide it inside the conduit connector (Ref. Figure 7).

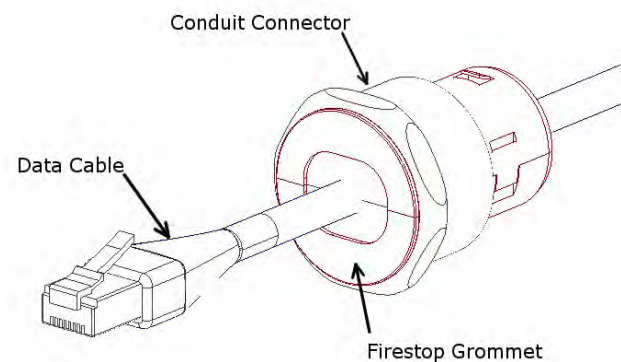
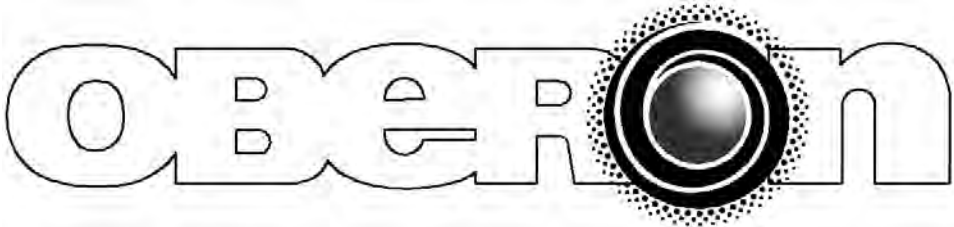


Figure 7

Step 9 – Attach data cable to the *access point*.

Step 10 – Close and lock the access door. The installation is now completed.



MODEL 1046 for Aruba APs

Installation Instructions

**** **WARNING** ****

Please thoroughly read the product warning below before installation to provide for a safe work environment.

1. Ceiling mounted products should be installed in accordance with National Electric Code paragraphs 300.10 (Electrical Continuity of Metal Raceways and Enclosures) and 300.11 (Securing and Supporting). Independent support wires or other means must be used for the installation of this product in the ceiling. Acoustical, suspended, false, drop and concealed spline ceiling grid work is not designed to support the weight of this product. Oberon's ceiling mounted products have four support wire tabs on the back box. These tabs shall be used for supporting the product with independent support wires, wire rope, threaded rod, or other secure support means of adequate gauge and fire resistance.
2. When closing the enclosure access door, be sure that the cam lock is completely engaged to prevent the access door from accidentally swinging open.
3. When opening the enclosure door, be sure to support the door to prevent the door from accidentally falling open.
4. This enclosure has a maximum operating ambient of 55° C (131° F), the temperature within the enclosure may not exceed this temperature, depending on power dissipation within enclosure.
5. A minimum air clearance of 1" between the housing of the access point and the enclosure side walls must be maintained for the safe operation of the equipment.
6. This product is intended to be installed by trained personnel.
7. Only Listed ITE products and Listed AC Receptacles shall be installed within the enclosure.
8. This product is to be repaired by personnel trained by the manufacturer or returned to the manufacturer for repair or replacement.
9. Maximum weight to be installed in the unit is 25 lbs.
10. All knockouts, openings, and holes shall be sealed with a plug constructed of metal, or a non-metal material that complies with UL 2043 or UL 1479.
11. All unused mounting holes should be sealed with tape or other material that complies with UL 1479.
12. If AC power is used inside the enclosure, connect the ground wire to the green ground screw located near the knockout in the backbox.

Installation Instructions

Model Number 1046 for Aruba APs

Assembly Components:

- Ceiling enclosure Model 1046-AN assembly – 1 each
- T-bar mount – 1 each
- Mounting bracket – 1 each
- 1" Trade size conduit connectors – 1 each
- Firestop Grommet – 1 each
- #8 – 32 wing nut – 2 each
- Lock washer – 2 each
- Support wire – 4 each
- Installation Instructions – 1 each
- Keys for access door lock – 2 each

If any of these items are missing, contact your Oberon representative.

Find a flat work surface to assemble the *ceiling enclosure*, *access point* and *antenna(s)* prior to mounting in ceiling.

For ease of access point installation, and to prevent damage to the door hinge, it is recommended that you remove the door from the enclosure. To remove, open the door to a 90° angle and aligning the tabs of the door mount to the slots in the backbox hinge opening and slide the door forward (Ref. Figure 1).

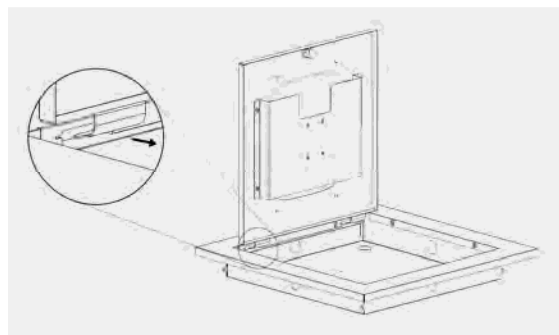


Figure 1

Step 1 – Place the ceiling enclosure backbox on the work surface. Determine which knockout is to be used to bring in the data cable and remove the knockout. Install the conduit fitting from the inside of the enclosure. Insert the conduit fitting through the hole with the nut installed from the outside of the enclosure (Ref. Figure 2).

NOTE: A surface mount box (or biscuit jack) and equipment cord can be conveniently mounted inside the Model 1011. (Non-plenum rated cables can be used inside a plenum rated enclosure). Use an adhesive backed surface mount box. Consider bend radius of horizontal cable and equipment cord when attaching the surface mount box.

Step 2 – Remove the ceiling tile and replace it with the *enclosure* backbox.

Step 3 – Use minimum 12-gauge support wire (included) to support the backbox independently of the ceiling grid. Attach one end of the wire to the support wire tabs located along the edge of the back box and the other end to a permanent supporting structure within the ceiling such as a ceiling joist (Ref. Figure 3).

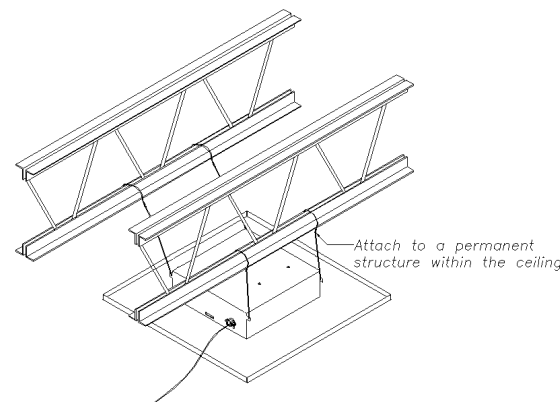


Figure 3



This product is Listed by Underwriters Laboratories Inc. Representative samples of this product have been evaluated by UL and meet applicable safety standards.

File #E348543

⚠️IMPORTANT**** - This is an important safety feature that could prevent human injury or damage to the access point should the unit become dislodged from the ceiling.

Step 4 – Snap Aruba Networks t-bar clip onto the t-bar mount by angling at a 45° angle and twisting the clip until it snaps in place. Next, attach the access point to the Aruba Networks t-bar clip by angling the access point at a 45° angle and twisting it until it also snaps in place (Ref. Figure 4).



Figure 4

Step 5 – Align the threaded studs to the two outer holes in the bracket attached to the door. Once the access point is snug in the hole, place the lock washer and wing nut onto the threaded rod. Tighten wing nuts until they are snug. With your fingers, tighten the hex nuts on the underside of the bracket then re-tighten the wing nuts until they no longer move freely (Ref. Figure 5).

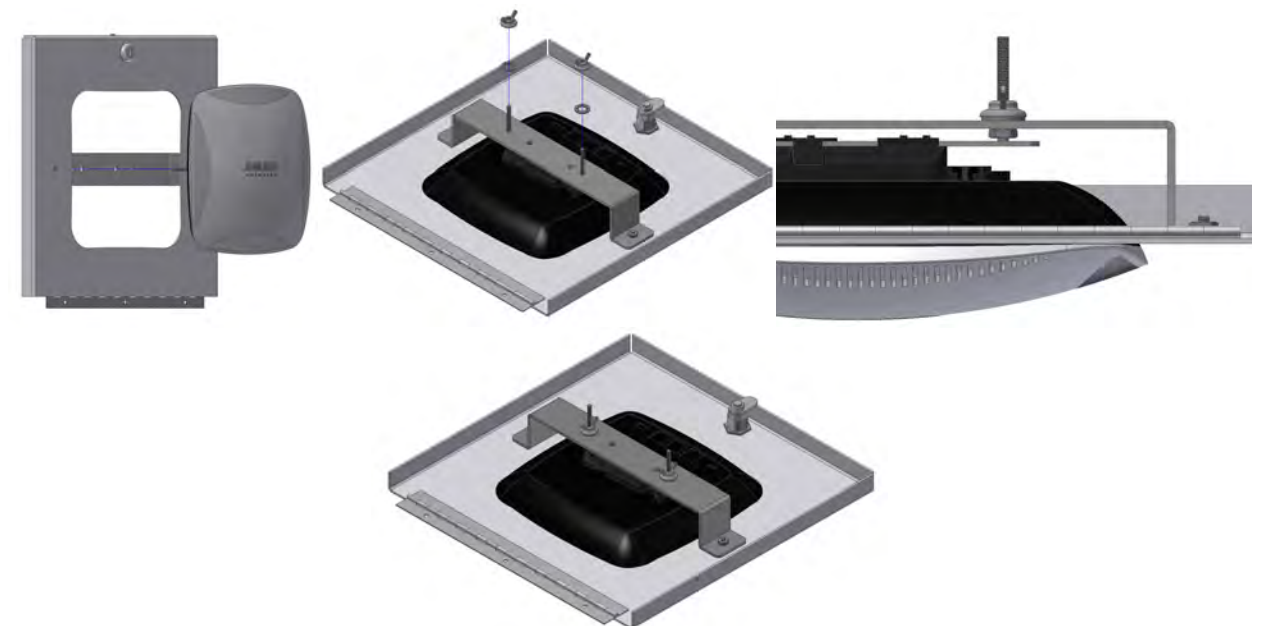


Figure 5