



Model 1076-AP325

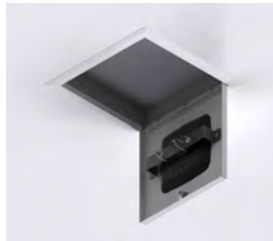
3" deep Recessed AP Wall Mount-Aruba AP325

Category: Wall and Hard Ceiling - Recess Mount

This locking enclosure provides a convenient way to mount and secure APs from leading vendor's in the hard lid ceiling or wall. The access point mounts in the door, revealing only the antenna surface. Interchangeable retrofit doors permit vendor and technology migrations, and simplify moves, adds, and changes, Unique wall bridge simplifies installation. UL listed for installation in the plenum space. 15" square white steel bezel and door.



NOTE: The Aruba AP-325 (only) has a BLE (Bluetooth low energy) antenna on the back side of the AP. This BLE antenna may not provide the desired coverage when mounted in an Oberon mount or enclosure. If you intend to use BLE services with the Aruba AP-325 access point in an Oberon product, please contact your Oberon customer service representative for an appropriate solution.



Features & Benefits

- Locking recessed wall or hard ceiling mounting solution to secure wireless access points from most vendors.
- UL Listed and designed to meet NEC300-22 and 300-23 for plenum installations; approved for AC line power
- Fully-hinged locking door, keyed alike
- Interchangeable doors permit simple migration to new access points and antennas
- Shallow back-box (3") simplifies installation in walls and ceilings
- Enclosure back-box is effective dust barrier to simplify ICRA compliance in hospitals
- OSHPD approved

Technical Specifications

- 15" x 15" white powder-coated steel flange and door
- 12.75" x 12.75" x 3" deep, galvanized steel back-box, RoHS compliant
- Knockouts for single gang j-box, (2) keystone jacks, (2) 0.75" trade conduit connector
- Maximum weight to be installed inside the unit is 25 lbs.
- De-rate upper operating temperature limit from +50°C to +40°C when AP in the enclosure
- Enclosure must be supported by the tile bridges; when installed in the ceiling, enclosure must be supported by the building structure, independent of the suspended ceiling

Standards for Safety

- UL 50 listed, TYPE 1, for indoor use only
- USL - Investigated using requirements contained in Standard UL 50 - Twelfth Edition, and UL 50E - First Edition
- CNL - Investigated using requirements contained in Canadian Standard CSA/C22.2 No. 94.1 and 94.2
- UL 2416, Audio/Video, Information and Communication Technology Equipment Cabinet, Enclosure & Rack Systems
- CSA C22.2 NO. 60950-1-07 + Amd. 1 Amd. 2 Information Technology Equipment -- Safety. Part 1, General Requirements

Configurations

Model Number	Compatible Access Points	Retrofit Doors*
1076-AP135	3" deep Recessed AP Wall Mount-Aruba AP135	38-7X-AP135
1076-AP205	3" deep Recessed AP Wall Mount-Aruba AP205	38-7X-AP205
1076-AP215	3" deep Recessed AP Wall Mount-Aruba AP215	38-7X-AP215
1076-AP225	3" deep Recessed AP Wall Mount-Aruba AP225	38-7X-AP225
1076-AP325	3" deep Recessed AP Wall Mount-Aruba AP325	38-7X-AP325
1076-CCOAP	3" deep Recessed AP Wall Mount-Cisco AP	38-7X-CCOAP
1076-CP	3" deep Recessed AP Wall Mount-Clear dome	38-7X-CP
1076-WA	3" deep Recessed AP Wall Mount-White ABS dome	38-7X-WA

* Retrofit/Adapter Doors are available to make migrating to a new AP with an existing enclosure easy.


Measurements *(Maximum values):*

- Height: 15 in.
- Width: 15 in.
- Depth: 3 in.
- Item Weight: 13 lbs.
- Shipping Weight: 14 lbs.

Includes

- (2) Wall bridges
- Universal access point "T-bar" mounting bracket
- (4) No. 8-32 hex nuts
- (2) Keys for lock
- (1) Fireblock cable egress kit
- Installation Instructions

Documentation Links

 [Spec Sheet](http://oberoninc.com/index.php?option=com_content&view=article&id=2471&Itemid=399) - oberoninc.com/index.php?option=com_content&view=article&id=2471&Itemid=399

 [Installation Instructions](http://oberoninc.com/images/WebDocs/Model1076-AN_Installation_Instructions.pdf) - oberoninc.com/images/WebDocs/Model1076-AN_Installation_Instructions.pdf

 [Customer Prints](http://oberoninc.com/images/WebDocs/Model1076-AP225_Customer_Print.pdf) - oberoninc.com/images/WebDocs/Model1076-AP225_Customer_Print.pdf

 [App Note - Wireless Coverage FAQ](http://oberoninc.com/images/WebDocs/Application_Note_Wireless_Coverage_FAQ.pdf) - oberoninc.com/images/WebDocs/Application_Note_Wireless_Coverage_FAQ.pdf

 [SECTION 27_21_33 DATA COMMUNICATIONS WIRELESS ACCESS POINTS](http://oberoninc.com/images/WebDocs/SECTION_27_21_33_DATA_COMMUNICATIONS_WIRELESS_ACCESS_POINTS.pdf) -

[http://oberoninc.com/images/WebDocs/SECTION 27_21_33 DATA COMMUNICATIONS WIRELESS ACCESS POINTS.pdf](http://oberoninc.com/images/WebDocs/SECTION_27_21_33_DATA_COMMUNICATIONS_WIRELESS_ACCESS_POINTS.pdf)

Images and documents may depict similar models in the product series.