



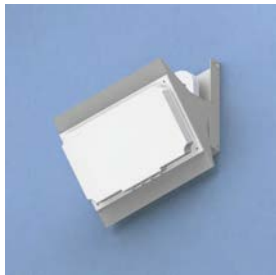
## Model 1014-00

### 1-Axis Articulating AP/Antenna Mount: White cover

Category: Wall and Hard Ceiling - Surface Mount - Surface Mount - Enclosures



Oberon's Model 1014 is an articulating wall mount for most wireless access points and directional antennas. Provides 1 axis articulating mount for directional antenna for up to a 45-degree tilt. The Model 1014-00 includes a wireless signal transparent paintable cover, making it simple to customize the color of the access point compliment interior color schemes. Coloring the cover does not void the manufacturer's warranty.



## Features & Benefits

- Swivels on one axis to provide down-tilt and azimuth coverage desired
- Designed for mounting most vendors enterprise wireless access points with external antennas on the wall or ceiling
- Designed for high-density WiFi installations
- Can be mounted over telecommunications outlet

## Technical Specifications

- Design: 1 Axis articulating mount for securing wireless access points and directional antennas on walls. Designed to allow directional antenna to articulate in elevation. Works with most vendors' access points and antennas. With vanity cover to conceal access point and antenna.
- Performance: Articulating antenna plate enables +/- 45° antenna pointing, up and down. Vanity cover is transparent to wireless signal
- Includes T-bar bracket for attaching most vendors' APs
- Construction: 16 ga. galvanized steel
- Includes Oberon model 33-ANT-COVER attachable, paintable, white UL94-5VA ABS plastic vanity cover
- Size: 10.8 inches by 8 inches by 4.4 inches (274mm by 203mm by 114mm)
- Vanity Cover size: 11.3 inches by 10.1 inches by 7.6 inches (287mm by 257mm by 195mm)


## Measurements *(Maximum values):*

- Height: 10.8 in.
- Width: 8 in.
- Depth: 4.4 in.
- Item Weight: 6 lbs.
- Shipping Weight: 6 lbs.

## Includes

- (1) Adjustable mounting bracket
- (1) White vanity cover
- (4) Screw head caps
- (1) T-bar bracket
- Shipping weight: 6 lbs. per unit

## Documentation Links

 [Spec Sheet](http://oberoninc.com/index.php?option=com_content&view=article&id=1987&Itemid=399) - oberoninc.com/index.php?option=com\_content&view=article&id=1987&Itemid=399

 [Installation Instructions](http://oberoninc.com/images/WebDocs/Model1014-00_Installation_Instructions.pdf) - oberoninc.com/images/WebDocs/Model1014-00\_Installation\_Instructions.pdf

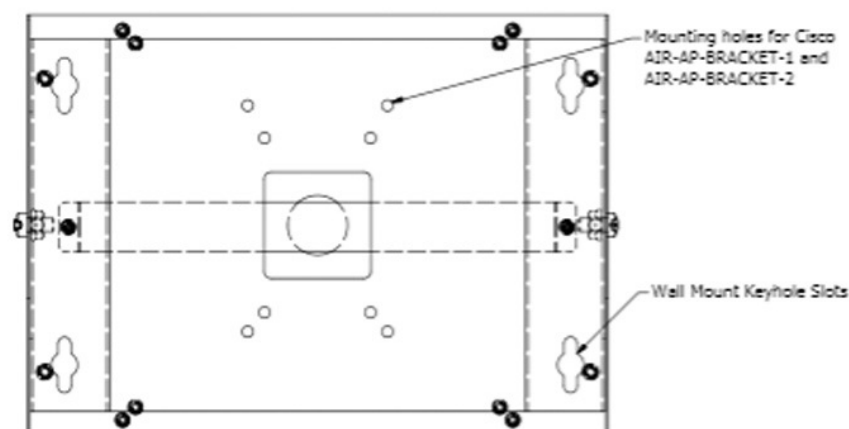
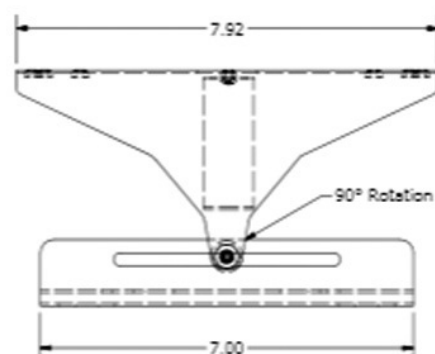
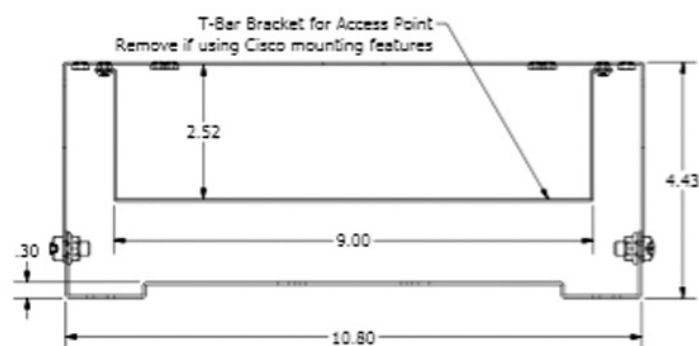
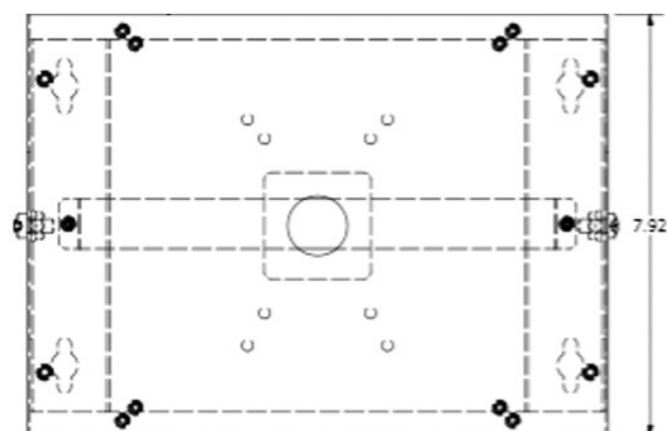
 [Customer Prints](http://oberoninc.com/images/WebDocs/Model1014-00_Customer_Print.pdf) - oberoninc.com/images/WebDocs/Model1014-00\_Customer\_Print.pdf

 [SECTION 27\\_21\\_33 DATA COMMUNICATIONS WIRELESS ACCESS POINTS](http://oberoninc.com/images/WebDocs/SECTION%2027_21_33%20DATA%20COMMUNICATIONS%20WIRELESS%20ACCESS%20POINTS.pdf) -

[http://oberoninc.com/images/WebDocs/SECTION 27\\_21\\_33 DATA COMMUNICATIONS WIRELESS ACCESS POINTS.pdf](http://oberoninc.com/images/WebDocs/SECTION%2027_21_33%20DATA%20COMMUNICATIONS%20WIRELESS%20ACCESS%20POINTS.pdf)

*Images and documents may depict similar models in the product series.*

## Dimensional Images



**Note: See 33-ANT-COVER for vanity cover dimensions.**