



Model 1028-04-ANT5-F Aluminum NEMA4 AP Enclosure:4" deep Susp ceiling

Category: Suspended Ceiling Zone and A/V Enclosures



Hard lid ceiling enclosure protects critical wireless access points, DAS remote units, and public safety equipment with detachable antennas. This water- and dust-proof steel enclosure has knockouts in the hinged door for ceiling-mounted antennas or water-resistant bulkhead connectors for antennas. Deep enough for the Cisco 3600 series and other large APs and DAS remote access units with external connectors and up to five antennas. Plenum-rated; provides NEMA 4 dust and water protection.



Features & Benefits

- Universal T-bar mounting bracket allows easy installation of most vendors' access points
- Durable, attractive textured powder coat finish matches most ceiling tiles
- Holes and plugs in cover and back-box for field installed, external, body mount antennas or bulkhead connectors; see Accessories
- Fully-hinged door clamps to the back-box with keyed quarter turn latch for a watertight seal
- Enclosure back-box is an effective dust barrier to simplify ICRA procedure compliance in Hospitals

Technical Specifications

- Design: Suspended ceiling enclosure protects critical wireless access points, DAS remote units, and public safety equipment with detachable antennas. This water- and dust-proof steel enclosure has knockouts in the hinged door for ceiling-mounted antennas or water-resistant bulkhead connectors for antennas.
- Configuration: Model 1028-04-ANT5-F: 4.5 inches (114 mm) deep, door with 5 openings and plugs for antennas
- Configuration: Model 1028-08-ANT5-F: 9.1 inches (231 mm) deep, door with 5 openings and plugs for antennas
- Performance: Designed to NEMA 1, 2, 3R, 4, 5, 12, 12k, and IEC529-IP66 specifications for indoor/outdoor wet, dirty, or corrosive environments. UL-Listed and designed to satisfy National Electric Code (NEC) paragraphs 300-22 and 300-23 for installation in the air-handling space. OSHPD approved.
- Fully-hinged door clamps to the back-box with keyed quarter turn latch for a watertight seal; door has mounting features for up to 5 antennas
- Holes and plugs in cover and back-box for field-installed, external, body mount antennas or bulkhead connectors
- Includes internal universal mounting panel, T-bar bracket, hole plugs, and hanger wire
- Construction: White, 12 ga. powder-coated aluminum back-box and door; white, 18 ga. powder-coated steel bezel
- Enclosure shall be supported by the building ceiling structural system, not tile grid work
- Maximum weight inside enclosure is 25 lbs.
- AP max. operating temperature should be de-rated by 6° C inside the enclosure
- Size: Bezel is 20.1 inches by 20.1 inches (510 mm by 510 mm), enclosure is 15.75 inches by 13.9 inches by 4.5 or 9.1 inches deep (400 mm by 353 mm by 114 mm or 231 deep).

Standards for Safety

- Recessed hard lid ceiling enclosure meets NEMA 1, 2, 3R, 4, 5, 12, 12k and IP66 for protection of critical wireless, networking, and public safety equipment in ceiling spaces
- UL Listed and designed to meet National Electric Code paragraph 300-22(C) and 300-23 for use in the above-ceiling (plenum) space

Configurations

Model Number	Back-Box	Flange
Model 1028-04-ANT5-B	15.75" x 13.9" x 4.5" deep back-box	20.1" beveled flange for hard ceilings and walls
Model 1028-04-ANT5-F	15.75" x 13.9" x 4.5" deep back-box	23.75" flange fits standard (U.S.) 2' x 2' ceiling grid
Model 1028-08-ANT5-B	15.75" x 13.9" x 9.1" deep back-box	20.1" beveled flange for hard ceilings and walls
Model 1028-08-ANT5-F	15.75" x 13.9" x 9.1" deep back-box	23.75" flange fits standard (U.S.) 2' x 2' ceiling grid

Measurements *(Maximum values):*

- Height: 23.75 in. (15.75 in.)
- Width: 23.75 in. (13.9 in.)
- Depth: 4.5 in.
- Item Weight: 14 lbs.
- Shipping Weight: 22 lbs.


Includes

- (1) Unit
- (1) Internal universal equipment mounting panel and T-bar bracket
- (8) Hanger wires
- (4) Screw caps (-B units only)
- (4) Self-tapping screws
- (4) #8 Hex nuts
- (4) 1/2" Trade size hole plugs
- (3) 1" Trade size hole plugs
- (4) Hinged snap cap
- (4) #8 pan head screw
- Installation instructions

Available Accessories


- [34-BMANT24](#) - 2.4 GHz Single Band WiFi Antenna: NEMA4 Enclosures
- [34-BMANT5](#) - 5 GHz Single Band WiFi Antenna: NEMA4 Enclosures
- [34-DMDUAL](#) - Dual Band WiFi Antenna: NEMA4 Enclosures
- [39-CORD-GRIP](#) - Cable ingress/egress fitting
- Gasket material for external antenna

Documentation Links

 [Spec Sheet](http://oberoninc.com/index.php?option=com_content&view=article&id=1366&Itemid=399) - oberoninc.com/index.php?option=com_content&view=article&id=1366&Itemid=399

 [Installation Instructions](http://oberoninc.com/images/WebDocs/Model1028-04-ANT5-F_Installation_Instructions.pdf) - oberoninc.com/images/WebDocs/Model1028-04-ANT5-F_Installation_Instructions.pdf

 [Customer Prints](http://oberoninc.com/images/WebDocs/Model1028-04-ANT5-F_Customer_Print.pdf) - oberoninc.com/images/WebDocs/Model1028-04-ANT5-F_Customer_Print.pdf

 [OSHPO OPM Drawing](http://oberoninc.com/images/WebDocs/Oberon_OPM.pdf) - http://oberoninc.com/images/WebDocs/Oberon_OPM.pdf

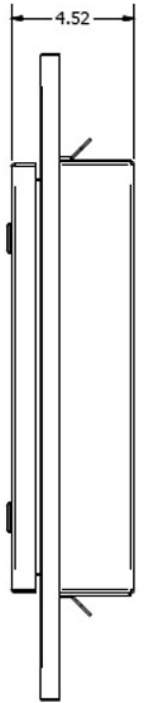
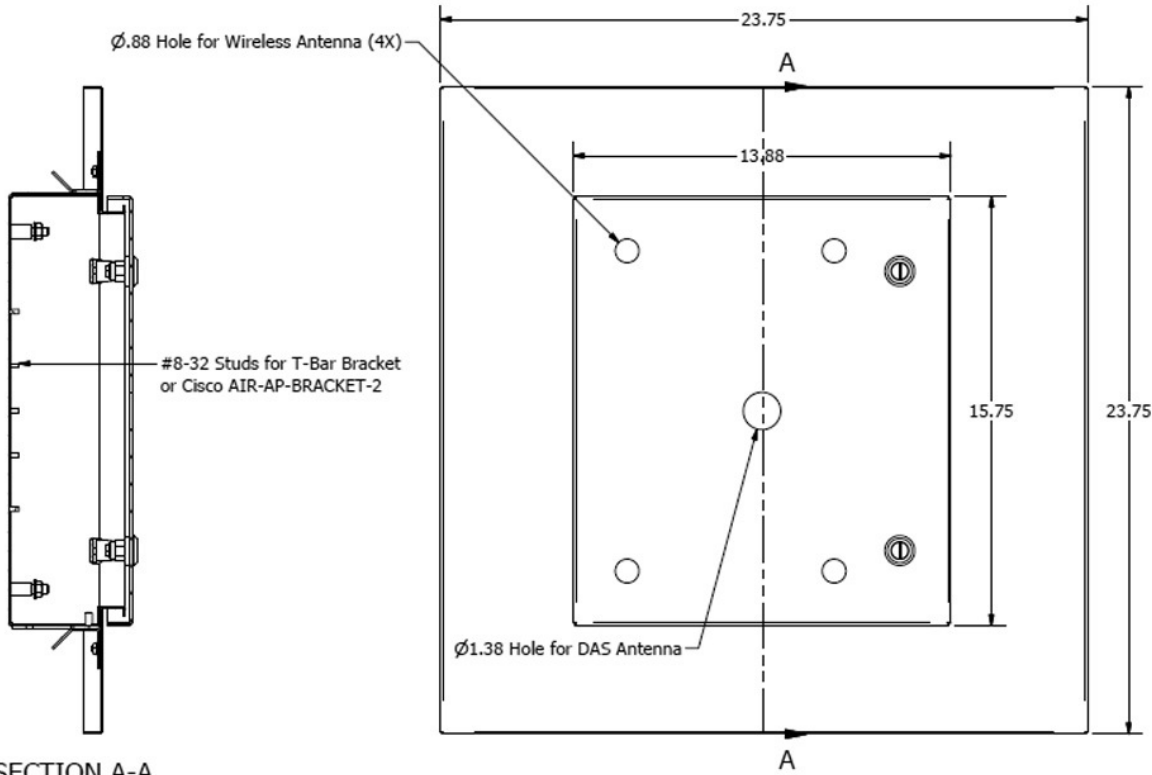
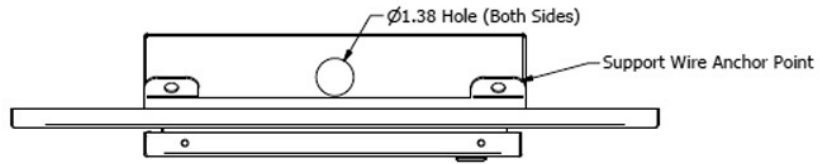
 [SECTION 27_21_33 DATA COMMUNICATIONS WIRELESS ACCESS POINTS](http://oberoninc.com/images/WebDocs/SECTION_27_21_33_DATA_COMMUNICATIONS_WIRELESS_ACCESS_POINTS.pdf) -

[http://oberoninc.com/images/WebDocs/SECTION 27_21_33 DATA COMMUNICATIONS WIRELESS ACCESS POINTS.pdf](http://oberoninc.com/images/WebDocs/SECTION_27_21_33_DATA_COMMUNICATIONS_WIRELESS_ACCESS_POINTS.pdf)

 [Model Viewer available at oberoninc.com](http://oberoninc.com)

Images and documents may depict similar models in the product series.

Dimensional Images



SECTION A-A
SCALE 1 / 4

