

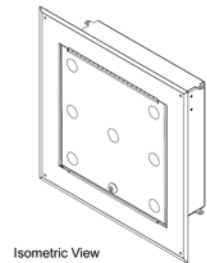
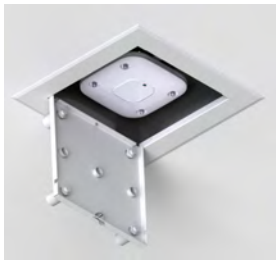


Model 1051-00 Recessed Ceiling/Wall AP Mount

Category: Wall and Hard Ceiling - Recess Mount



Locking hard lid ceiling or wall mount enclosure is designed for wireless APs and DAS remote units with detachable antennas. This aesthetic, white powder-coated steel enclosure has an 17.5" square bezel which fastens into the wall and simplifies AP moves, adds, and changes. The 1051-00 model has openings in the door to mount up to seven external antennas. Interchangeable retrofit doors allow current owners to upgrade to new AP or antenna solutions from different vendors by swapping doors.



Features & Benefits

- Recessed, hard lid ceiling or wall enclosure for securing wireless AP and DAS remotes with detachable antennas
- Universal T-bar mounting bracket allows easy installation of most vendors' APs
- Fully-hinged locking door, keyed alike
- Interchangeable doors permit simple migration to new APs and antennas
- Enclosure back-box is effective dust barrier to simplify ICRA procedure compliance

Technical Specifications

- Design: 4.5 inch deep AP enclosure designed for recess installation in hard-lid ceilings (drywall, plaster and lath, stucco, block, core plank, etc.). Internal T-bar accommodates APs from most manufacturers
- This is a steel enclosure so antennas **MUST** be mounted externally on the door, or AP mounted in the door. Mount up to (7) external antennas on the door using the bulkhead connector kit for dipole antennas (Oberon P/N 35-BULKHD-KIT) or Oberon 34-ZDUAL or 34-DMDUAL antennas
- Performance: UL Listed and designed to meet NEC300-22 and 300-23 for plenum installations. OSHPD approved, OPM-0110-13. De-rate AP operating temperature range by 6°C when mounted in enclosure
- Enclosure must be fastened to ceiling using suitable hardware
- Fully hinged locking door, keyed alike. Doors are interchangeable
- Construction: 16 ga. back-box, 14 ga. door, textured white powder-coated steel
- Size: Flange is 17.5 inches by 17.5 inches (445 mm by 445 mm), enclosure is 12.5 inches by 12.5 inches by 4.5 inches deep (318 mm by 318 mm by 114 mm), 4 inches (101 mm) useful depth with universal T-bar bracket in place
- Maximum weight to be installed inside enclosure is 25 lbs

Standards for Safety

- UL 50 listed, TYPE 1, for indoor use only
- UL Listed and designed to meet National Electric Code Paragraphs 300-22 and 300-23 for installation in the above-ceiling space
- USL - Investigated using requirements contained in Standard UL 50 - Twelfth Edition, and UL 50E - First Edition
- CNL - Investigated using requirements contained in Canadian Standard CSA/C22.2 No. 94.1 and 94.2
- UL 2416, Audio/Video, Information and Communication Technology Equipment Cabinet, Enclosure & Rack Systems
- CSA C22.2 NO. 60950-1-07 + Amd. 1 Amd. 2 Information Technology Equipment -- Safety. Part 1, General Requirements
- OSHPD Approval OPM-110-13

Configurations

Model Number	Description & Compatibility	Retrofit Doors*
1051-00	4.5" deep Suspended Ceiling AP Mount to 7 antennas	38-52-00
1051-AN-ANT16	4.5" deep Suspended Ceiling AP Mount Aruba antenna	38-52-AN-ANT16
1051-AP135	4.5" deep Suspended Ceiling AP Mount Aruba AP135	38-52-AP135
1051-AP215	4.5" deep Suspended Ceiling AP Mount Aruba AP215	38-52-AP215
1051-AP225	4.5" deep Suspended Ceiling AP Mount Aruba AP225	38-52-AP225
1051-AP325	4.5" deep Suspended Ceiling AP Mount Aruba AP325	38-52-AP325
1051-CCOANT	4.5" deep Suspended Ceiling AP Mount Cisco antenna	38-52-CCOANT
1051-CCOAP	4.5" deep Suspended Ceiling AP Mount Cisco APs	38-52-CCOAP
1051-CCOAP3800	4.5" deep Suspended Ceiling AP Mount Cisco 3800 APs	38-52-CCOAP3800
1051-DOME	4.5" deep Suspended Ceiling AP Mount ABS dome	38-52-DOME
1051-ENT3610	4.5" deep Suspended Ceiling AP Mount Extreme AP	38-52-ENT3610

* Retrofit/Adapter Doors make migrating to a new AP with an existing 1051 enclosure easy.

Measurements *(Maximum values):*

- Height: 17.5 in
- Width: 17.5 in
- Depth: 4.5 in.
- Item Weight: 16 lbs.
- Shipping Weight: 17 lbs.


Includes

- (1) Unit per carton
- (1) Internal universal AP mounting T-bar bracket
- (4) Hanger wires
- (1) Cable egress firestop Kit (1" trade size conduit connector, and firestop grommet)
- (2) Keys for lock
- (4) White cosmetic screw caps and (4) #10 ceiling/wall attachment screws
- Installation instructions


Available Accessories


- [34-BMANT24](#) - 2.4 GHz Single Band WiFi Antenna: NEMA4 Enclosures
- [34-BMANT5](#) - 5 GHz Single Band WiFi Antenna: NEMA4 Enclosures
- [34-ZDUAL](#) - Dual Band WiFi Antennas: Oberon Enclosures, RPTNC

Documentation Links

 [Spec Sheet](http://oberoninc.com/index.php?option=com_content&view=article&id=1267&Itemid=399) - oberoninc.com/index.php?option=com_content&view=article&id=1267&Itemid=399

 [Installation Instructions](http://oberoninc.com/images/WebDocs/Model1051-00_Installation_Instructions.pdf) - oberoninc.com/images/WebDocs/Model1051-00_Installation_Instructions.pdf

 [Customer Prints](http://oberoninc.com/images/WebDocs/Model1051-00_Customer_Print.pdf) - oberoninc.com/images/WebDocs/Model1051-00_Customer_Print.pdf

 [OSHPO OPM Drawing](http://oberoninc.com/images/WebDocs/Oberon_OPM.pdf) - http://oberoninc.com/images/WebDocs/Oberon_OPM.pdf

 [SECTION 27_21_33 DATA COMMUNICATIONS WIRELESS ACCESS POINTS](http://oberoninc.com/images/WebDocs/SECTION_27_21_33_DATA_COMMUNICATIONS_WIRELESS_ACCESS_POINTS.pdf) -

[http://oberoninc.com/images/WebDocs/SECTION 27_21_33 DATA COMMUNICATIONS WIRELESS ACCESS POINTS.pdf](http://oberoninc.com/images/WebDocs/SECTION_27_21_33_DATA_COMMUNICATIONS_WIRELESS_ACCESS_POINTS.pdf)

Images and documents may depict similar models in the product series.

Dimensional Images

