



CEILING PLATES

Common Installations



concrete
CMA330 & CMA345

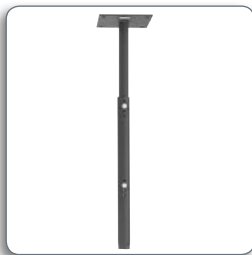


vaulted
CMA395

CMA100 8" (203 mm)

Ceiling Plate with Adjustable Column

- All-in-one solution for many common ceiling structures
- Extension: 24.25-46" (61.6-116.8 cm) in 0.75" (19 mm) increments
- Weight Capacity: 500 lbs (227 kg)
- Available in black, silver and white



CMA700 6" (152 mm)

Ceiling Plate with Adjustable Column

- All-in-one solution for many common ceiling structures
- Extension: 12-18" (305-457 mm) in 1" (25 mm) increments
- Weight Capacity: 500 lbs (227 kg)
- Available in black, silver and white



CMS115 SpeedConnect™ Ceiling Plate with 1-1/2" NPT opening

- Low-profile, aesthetic design
- Integrated cable port for a clean installation
- Weight Capacity: 500 lbs (227 kg)
- Available in black, silver and white



CMA101 Designer Ceiling Plate

- Attractive solution for basic installations
- Two or four bolt installation
- Weight Capacity: 500 lbs (227 kg)
- Available in black, silver and white



CMA105 4" (102 mm)

Flat Ceiling Plate

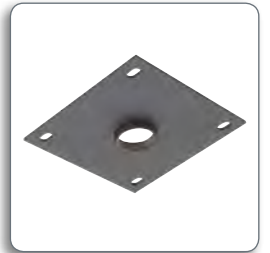
- General purpose ceiling plate with small mounting footprint
- Use with short columns or when mounting space is limited
- Weight Capacity: 500 lbs (227 kg)



CMA110 8" (203 mm)

Flat Ceiling Plate

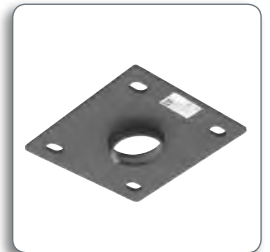
- General purpose ceiling plate with large mounting footprint
- Use with long columns to distribute load
- Weight Capacity: 500 lbs (227 kg)



CMA115 6" (152 mm)

Flat Ceiling Plate

- General purpose ceiling plate with medium mounting footprint
- Weight Capacity: 500 lbs (227 kg)
- Available in black, silver and white



CMA330 8" (203 mm)

Offset Ceiling Plate

- Offset provides cable exit when mounting to flat ceiling surfaces
- Offset Height: 1.75" (45 mm)
- Weight Capacity: 500 lbs (227 kg)



CMA345 Structured Ceiling Plate

- Flexible joint to minimize shock and vibration
- Offset provides cable exit when mounting to flat ceiling surfaces
- Weight Capacity: 500 lbs (227 kg)



CMS390 Dual Joist Ceiling Plate

- Attaches to finished ceilings and provides lateral shift between joists
- Joist Width: 16" (406 mm)
- Weight Capacity: 500 lbs (227 kg)

