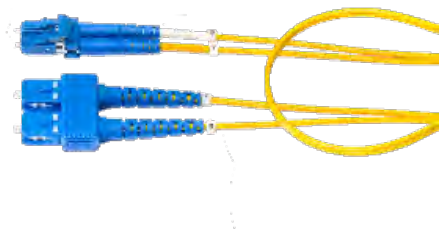


## FPSLDSD007M Cable Assemblies - FiberExpress FP - PATCH CORDS



For more Information  
please call

1-800-Belden1

**General Description:**

FX PATCH CORD, OS2, LC DUPLEX - SC DUPLEX, 7 M, OFNR, DUPLEX ZIP 2.0 MM, A-TO-B, YELLOW JACKET

**Usage (Overall)**

<b>Suitable Applications:</b>	Data Centers, Main Equipment Rooms, Telecommunications Rooms and Work Area
<b>Related Parts:</b>	FiberExpress Adapter Strips, FiberExpress Manager Modules and FiberExpress Ultra Frames and Cassettes. Workstation Outlets

**Multi Conductor****Physical Characteristics****Overall Cabling**

<b>Overall Cabling Fillers:</b>	Refer to cable Technical Specifications
---------------------------------	---

**Cable Characteristics (Connectivity)****Overall Diameter**

<b>Overall Nominal Diameter:</b>	0.078 x 0.156 in.
----------------------------------	-------------------

**Physical Characteristics (Connectivity)****Fiber Type**

<b>Fiber Type:</b>	SM, (OS2)
--------------------	-----------

**Materials****Materials:**

Description	Type	Material	Color
Connectors at first end	LC-Duplex	Plastic	Blue
Ferrule at first end	1.25mm	Zirconia-Ceramic	
Connector at second end	SC-Duplex	Plastic	Blue
Ferrule at second end	2.5mm	Zirconia-Ceramic	
Boots at both ends		Rubber	Blue

**Wiring Scheme**

<b>Wiring Scheme:</b>	TIA/EIA 568-C.3
-----------------------	-----------------

**Weight**

<b>Weight:</b>	0.202 lbs.
----------------	------------

**Packaging**

<b>Packaging:</b>	Individually packaged.
-------------------	------------------------

**Mechanical Characteristics (Connectivity)**

<b>Storage Temperature Range:</b>	-40°C To +75°C
-----------------------------------	----------------

<b>Operating Temperature Range:</b>	-40°C To +75°C
-------------------------------------	----------------

**Environmental/Mechanical Characteristics:**

Test (Method)	TIA 568-D.3	Belden
Thermal Cycling (FOTP-3)	n/a	-40 to 75°C cycling for 7 days
Temperature Life (FOTP-4)	60°C for 4 days	85°C for 7 days
Humidity (FOTP-5)	90-95% at 40°C for 4 days	95% @ 75°C for 7 days
Durability (FOTP-21)	500 cycles	6 x 200 cycles (3 Elevations)
Cable Retention (FOTP-6)	5.0 kg @ 0 deg.	1.94 kg @ 90 deg.
Flex (FOTP-1)	0.5 kg @ 90° to -90° for 100 cycles	0.9 kg @ 90° to -90° for 100 cycles
Twist (FOTP-36)	1.5 kg for 10 cycles	1.5 kg for 10 cycles

**Overall Length Tolerances:**

Range	Tolerance	Range	Tolerance	Range	Tolerance
Sx & Dx Patchcord	Sx & Dx Patchcord	MPO Trunk	MPO Trunk	Multi-Fiber Cable Assembly	Multi-Fiber Cable Assembly
0 to 2 meters	+0.2 / -0 meter	0 to 2 meters	+0.2 / -0 meter	0 to 2 meters	+0.2 / -0 meter

## FPSLDSD007M Cable Assemblies - FiberExpress FP - PATCH CORDS

2.1 to 5.0 meters	+0.3 / -0 meter	2.1 to 5.0 meters	+0.3 / -0 meter	2.1 to 5.0 meters	+0.3 / -0 meter
5.1 to 40 meters	+0.4 / -0 meter	5.1 to 20 meters	+0.4 / -0 meter	5.1 to 20 meters	+0.4 / -0 meter
Over 40.1 meters	+ 1.0% / -0%	Over 20.1 meters	+ 1.0% / -0%	Over 20.1 meters	+ 1.3 / -0 meter

### Applicable Specifications and Agency Compliance (Overall)

#### Applicable Standards & Environmental Programs

UL Rating:	Riser
EU Directive 2011/65/EU (ROHS II):	Yes
EU RoHS Compliance Date (mm/dd/yyyy):	01/01/2013
MIL Order #39 (China RoHS):	EUP 50
Safety Listing:	ACA, Bi-national Standard Listed

#### Suitability

Suitability - Indoor:	Yes
-----------------------	-----

### Transmission Characteristics (Connectivity)

#### Optical Connector Performance:

Description	OM1 (62.5 μm)	OM2 (50 μm)	OM3 (50 μm)	OM4 (50 μm)	OS2 (Singlemode) UPC	OS2 (Singlemode) APC
Maximum IL (dB) SingleFiber Connector LC - SC - ST	0.25 dB	0.25 dB	0.25 dB	0.15 dB	0.35 dB	0.35 dB
Typical RL (dB) SingleFiber connector LC - SC - ST	-30 dB	-30 dB	-30 dB	-30 dB	-55 dB	-65 dB
Maximum IL (dB) MultiFiber Connector MPO	0.5 dB	0.5 dB	0.35 dB	0.2 dB	-	0.75 dB
Typical RL (dB) MultiFiber Connector MPO	-30 dB	-30 dB	-30 dB	-30 dB	-	-60 dB

### Electrical Characteristics (Overall)

#### Notes (Overall)

##### Product Family

#### Put Ups and Colors:

Item #	Putup	Ship Weight	Color	Notes	Item Desc
FPSLDSD007M	1 EA	0.092 KG			FXPC OS2 LC_DX SC_DX 7M

Revision Number: 0 Revision Date: 03-27-2015

© 2017 Belden, Inc.  
All Rights Reserved.

Although Belden makes every reasonable effort to ensure their accuracy at the time of this publication, information and specifications described herein are subject to error or omission and to change without notice, and the listing of such information and specifications does not ensure product availability. Belden provides the information and specifications herein on an "AS IS" basis, with no representations or warranties, whether express, statutory or implied. In no event will Belden be liable for any damages (including consequential, indirect, incidental, special, punitive, or exemplary damages) whatsoever, even if Belden has been advised of the possibility of such damages, whether in an action under contract, negligence or any other theory, arising out of or in connection with the use, or inability to use, the information or specifications described herein. All sales of Belden products are subject to Belden's standard terms and conditions of sale.