

## 1-Phase W Series Dual Feed PDU 230V / 208V

- >> Ideal Dual PDU Solution
- >> Simplify Dual PDU Setup
- >> Save Your Rack Space
- >> Facilitate Rack Cabling
- >> Minimize Network IP Required
- >> Maximize PDU Outlet Density
- >> Increase Management Efficiency
- >> Reduce Power Distribution Cost



### Why Dual Feed PDU ?

#### >>> Primary & Redundant Power

Mission critical IT equipment require redundant power supply. It becomes essential to apply both primary & secondary power feeds. In order to distinguish the power sources, it suggests to apply different PDU casing colors for the PDU-I & PDU-II. Moreover, these two PDUs may be mounted on the same side for some rack cabling designs. Data centers require an easy but comprehensive solution for such dual rack PDU approach.



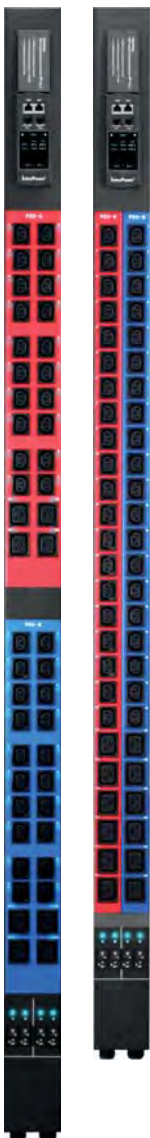
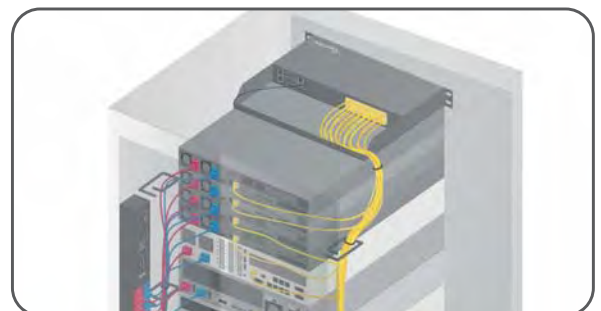
#### >>> 2-in-1 PDU solution

Creatively, Austin Hughes develops an 2-in-1 solution - InfraPower W series Dual Feed PDU. Integrated by PDU I & PDU II, It simplifies the rack PDU system and hence offers an ideal solution for dual rack PDU approach. The sharply contoured Red / Blue layout design allows a clear demarcation on primary & redundant power distribution. PDU-I & PDU-II share the same advanced W 2.8" touchscreen meter for local monitoring and PDU connection.



#### >>> Facilitate Cable Management

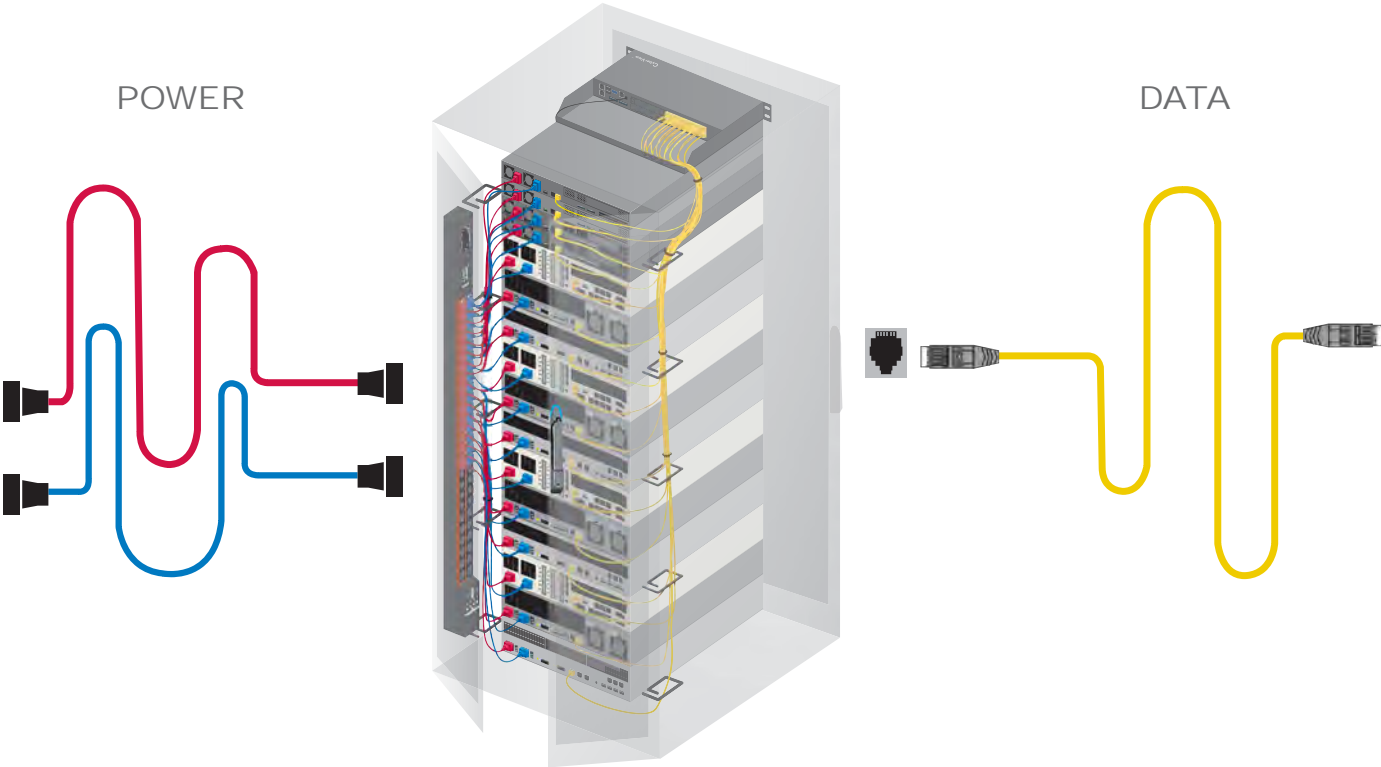
It becomes one of the cable management standard to separate power and data cables inside a rack. On the one hand, it minimizes the erratic data transfer as well as EMI. On the other hand, it distinguish the power & data cabling and hence facilities the IT rack cabling. By W Series Dual Feed PDU, cable routing for both primary and redundant power connection can be organized easily to one side of the rack.





### One Side Orientation for Power Cabling

Power and data cables should be kept apart in order to avoid interference. It is a typical practice to isolate power cabling to one side of the rack, whether it is for primary or secondary power connection. InfraPower Dual Feed PDU series offers an efficient, convenient & space saving solution - Primary & Secondary PDUs are integrated to one unit with dual power feed.



### W Meter - Advanced & Sophisticated

W series PDUs are supplied with a W meter that allows local metering, the ports for PDU daisy chain as well as external sensor / peripheral connection.

- PDUs can be inter-cascaded in a single daisy chain.
- Simply connect 1 x IP Dongle to access up to 16 PDUs to save IP address.
- Built-in buzzer will sound when circuit or bank Amp over alarm setting.
- Field replaceable design allows meter replacement without PDU power interruption.



- ..... **Cascade port**
  - Up to 16 PDU Levels
- ..... **Sensor port x 2**
  - Temp. Sensor
  - Temp. + Humid. Sensor
  - External PDU display
- ..... **2.8" color LCD**
  - Featured w/ Touchscreen

### IEC Secure Sleeves



- Sleeve attached to C14 power cord inlet : IPP-SS-C13 ( pack of 200 )
- Sleeve attached to C20 power cord inlet : IPP-SS-C19 ( pack of 100 )

### Colored Power Cords



- C19 - C20 6ft ( 1.5 mm<sup>2</sup> )**  
EC-6PC1920-B Blue  
EC-6PC1920-R Red

- C13 - C14 6ft ( 1.0 mm<sup>2</sup> )**  
EC-6PC1314-B Blue  
EC-6PC1314-R Red  
EC-6PC1314-O Orange  
EC-6PC1314-G Light Grey

- C13 - C14 10ft ( 1.0 mm<sup>2</sup> )**  
EC-10PC1314-B Blue  
EC-10PC1314-R Red  
EC-10PC1314-O Orange  
EC-10PC1314-G Light Grey



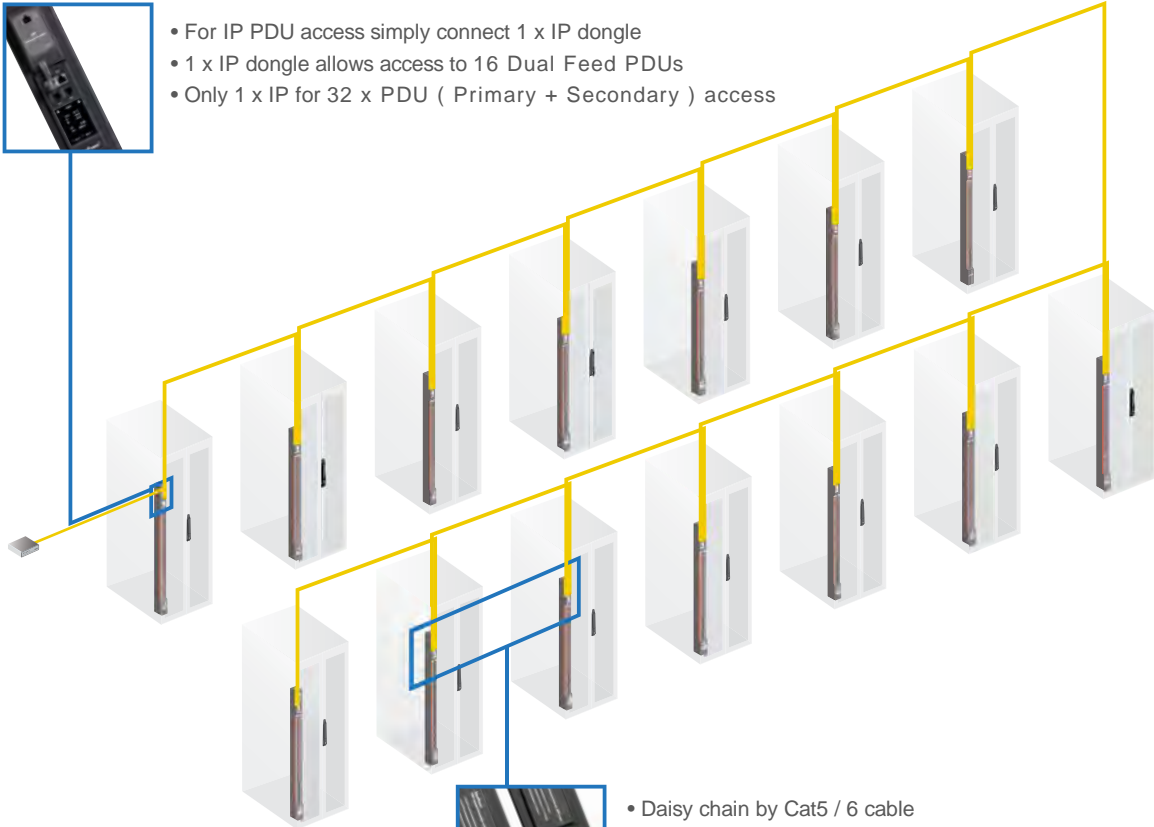
## Ultra Density PDU Management

W Series Dual Feed PDU combines highly efficient hardware connection with software remote management for Ultra High Density PDU Remote Management.

### IP Dongle on the first Meter Level



- For IP PDU access simply connect 1 x IP dongle
- 1 x IP dongle allows access to 16 Dual Feed PDUs
- Only 1 x IP for 32 x PDU ( Primary + Secondary ) access



- Daisy chain by Cat5 / 6 cable
- Max. distance between 2 PDUs is 20M
- The W meter can be cascaded up to 16 levels
- Max 32 x PDU ( Primary + Secondary ) in one daisy chain

## Save the IP Address Cost of Your Data Center

**Free IPM-04 :**  
50 x IP Group  
800 x PDU  
5 x Concurrent User

**3rd Party DCIM ( via SNMP ) :**  
Cost-efficient PDU remote management can be achieved by applying IP dongle and daisy chain



### IP Dongle for Vertical PDU

**IPD-02-S**



Patented Design

- Hot pluggable for easy integration
- Allows IP remote access to the PDUs by a single network IP
- One IP dongle supports max. 16 PDUs in daisy chain
- SNMP capability v2 / v3

### Temp. & Humid. Sensor Temp. Sensor

**IG-TH-01-2M / 4M**

Temp. & Humid.



**IG-T-01-2M / 4M**  
Temp.

- External with 2M or 4M cord
- Plug & Play
- Low profile design with magnetic base for easy affixing to the rack
- Pair of sensors can be connected to one single W series PDU meter

### External PDU Display

**IP-ED-02**



- Plug & Play
- Support two PDU displays with amp. and temp.
- Adjustable Mounting Kit for easy installation to rack door
- Bundled 3m RJ-11 cable x 2



W Series Dual Feed PDU Features	Monitored		Switched	
	W	Wi	WS	WSi
Outlet Amp - kWh Measurement		✓		✓
Outlet Switch ON / OFF			✓	✓
Hot-Swap Meter	✓	✓	✓	✓
2.8" Color LCD ( featured w/ Touchscreen )	✓	✓	✓	✓
Circuit Amp - kWh Measurement	✓	✓	✓	✓
Temp-Humid Sensor port x 2	✓	✓	✓	✓
16 PDU Levels in Single Daisy Chain	✓	✓	✓	✓
One IP Access up to 16 PDU Levels	✓	✓	✓	✓
SNMP Capability v2 / v3	✓	✓	✓	✓
Tool-less Mounting for Vertical PDU	✓	✓	✓	✓
0U Vertical / 2U Horizontal	✓	✓	✓	✓
Hydraulic Magnetic Circuit Breaker or Fuse	✓	✓	✓	✓
Operating Temperature Range -5°C to 60°C	✓	✓	✓	✓
IEC C13 / C19 / C13 + C19	✓	✓	✓	✓

**230V - 16A / 32A**

**208V - 20A / 30A**

**W** Monitored

**WS** Switched

**Wi** Monitored + Outlet Measurement

**WS** Switched + Outlet Measurement

**W**

**WS / Wi / WSi**

1 inch = 25.4 mm

Vertical		Dimension
C13	C19	W x D x H ( mm )
28 x 2		89 x 70 x 1650
24 x 2		89 x 70 x 1650
20 x 2		89 x 70 x 1650
16 x 2		89 x 70 x 1650
24 x 2	6 x 2	89 x 70 x 1800
24 x 2	4 x 2	89 x 70 x 1800
20 x 2	6 x 2	89 x 70 x 1650
20 x 2	4 x 2	89 x 70 x 1650
16 x 2	6 x 2	89 x 70 x 1650
16 x 2	4 x 2	89 x 70 x 1650
12 x 2	6 x 2	89 x 70 x 1650
12 x 2	4 x 2	89 x 70 x 1650

1 inch = 25.4 mm

Vertical		Dimension
C13	C19	W x D x H ( mm )
24 x 2		89 x 90 x 1800
20 x 2		89 x 90 x 1800
16 x 2		89 x 90 x 1800
20 x 2	4 x 2	89 x 90 x 1800
16 x 2	6 x 2	89 x 90 x 1800
16 x 2	4 x 2	89 x 90 x 1800
12 x 2	6 x 2	89 x 90 x 1800
12 x 2	4 x 2	89 x 90 x 1800

1 inch = 25.4 mm

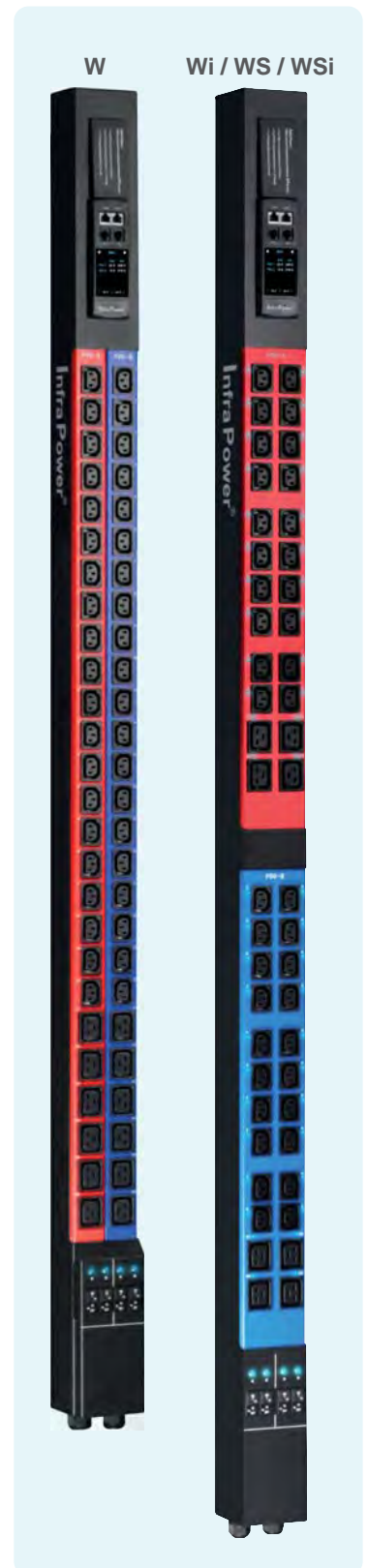
2U Horizontal		Dimension
C13	C19	W x D x H ( mm )
10 x 2		437.5 x 380 x 88.9
8 x 2		437.5 x 380 x 88.9
6 x 2		437.5 x 380 x 88.9
8 x 2	2 x 2	437.5 x 380 x 88.9
6 x 2	2 x 2	437.5 x 380 x 88.9

**\*\* Custom configuration or UK / Schuko outlets on request**

**\*\* 230V inlet : 32A 60309 / 16A 60309 / C20**

**\*\* 208V inlet : L6-30P / L6-20P**

Software Functions		IPM-04
Capacity	IP Dongle Groups ( Just 1 for 16 PDU levels )	50
	PDU number	800
	Concurrent Users	5
Enhanced Features	Outlet Level kWh & Amp Measurement	✓
	Outlet Scheduling	✓
	Energy Consumption ( kWh ) Monitoring	✓
	Apparent Power ( kVA ) Monitoring	✓
	Power Factor Measurement	✓
Basic Features	Circuit Breaker Monitoring	✓
	Aggregate Current (Amp) Monitoring	✓
	Individual Outlet Switch ON / OFF	✓
	Temp-Humid Monitoring	✓
	Alarm Threshold Setting	✓
	Rising Alert Threshold Setting	✓
	Remote Access via Web	✓
	Graphic User Interface	✓
	Reporting	✓
	PDU Series Support	✓
PDU Series Support	<b>W</b> - Monitored PDU	✓
	<b>Wi</b> - Monitored PDU ( Outlet Measurement )	✓
	<b>WS</b> - Switched PDU	✓
	<b>WSi</b> - Switched PDU ( Outlet Measurement )	✓



Austin Hughes has an extensive distribution network, including EMEA, the Americas & APAC.

Contact your nearest sales office for details of local presentation.

**Sales Inquiry**

[inquiry@austin-hughes.com](mailto:inquiry@austin-hughes.com)

**Technical Support**

[support@austin-hughes.com](mailto:support@austin-hughes.com)

Distributed by:

Distributor by country on application