

Back-to-Back Flat Screen Ceiling Mount with Tilt Designed for screens up to 55"

 For more information please visit www.btechavmounts.com/BT8428

BT8428

BT8428

Back-to-Back Flat Screen Ceiling Mount with Tilt

**Designed for two screens up to
55" (140cm) / 35kg (77lbs) per screen**

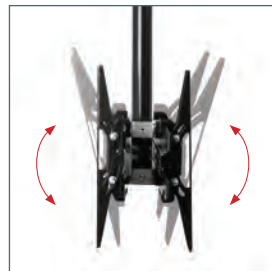
- Fits screens with mounting patterns up to H: 465 (18.3") x V: 400mm (15.7") including screens using VESA® fixings up to 400 x 400mm
- Easy tilt adjustment of interface +/-18°
- Unique 'Torsion-Tilt' mechanism
- Integrated cable management
- Pole can be tilted up to 90° for mounting on angled ceilings
- Supplied with safety bolt and Locking bars for a secure installation
- Simple 'hook-on' installation with all mounting hardware included
- Available in three lengths
BT8428-100:
Ceiling drop to centre of mount: 953mm (37.5")
BT8428-150:
Ceiling drop to centre of mount: 1453mm (57.2")
BT8428-200:
Ceiling drop to centre of mount: 1953mm (76.9")
- Available in Black or Black with a Chrome Pole



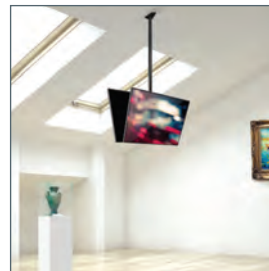
Per Screen



Supplied with safety bolt for a secure installation



Easy tilt adjustment +/-18°



Ceiling mount tilt function allows for installation on angled ceilings

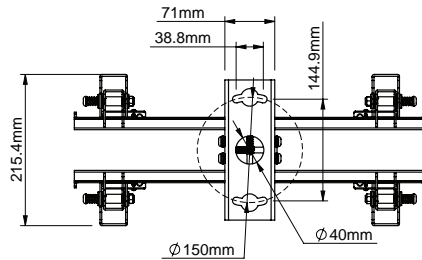


Available in Black with Black or Chrome poles in various lengths

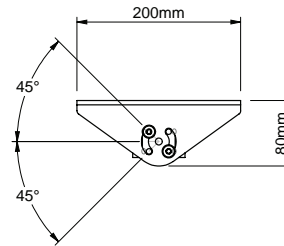
Back-to-Back Flat Screen Ceiling Mount with Tilt Designed for screens up to 55"

For more information please visit www.btechavmounts.com/BT8428

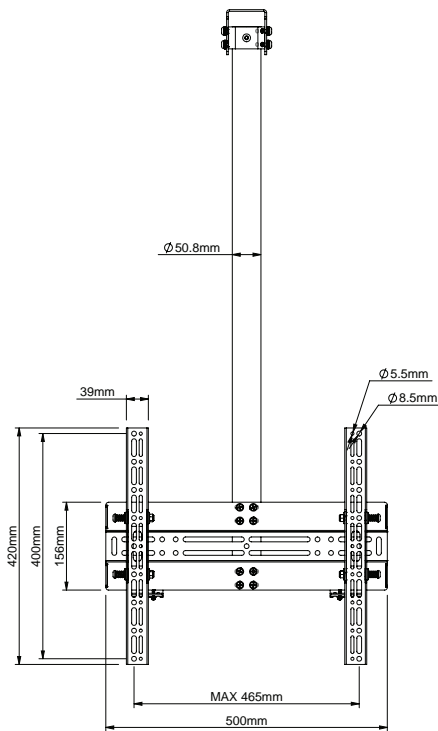
BT8428



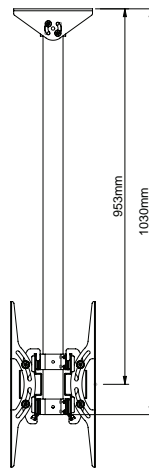
Ceiling Plate - Top View



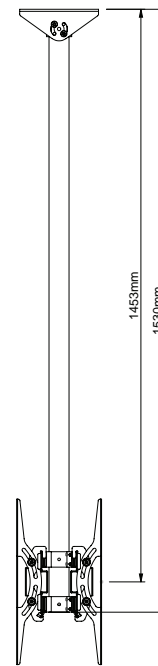
Ceiling Plate - Side View



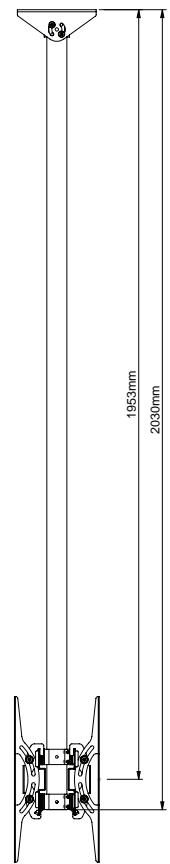
Front View



Side View - 1m Pole



Side View - 1.5m Pole



Side View - 2m Pole

| Product Code: | Colour: | Order Ref: | MC Qty | IC Qty | MC Weight | MC Cube | EAN Code: |
|---------------|-------------|--------------|--------|--------|-----------------|-----------------------|---------------|
| BT8428-100 | Black | BT8428-100/B | 1/1 | 0/0 | 13.5kg / 2.04kg | 0.0733cbm / 0.0283cbm | 5019318551413 |
| BT8428-100 | Chrome Pole | BT8428-100/C | 1/1 | 0/0 | 13.5kg / 2.04kg | 0.0733cbm / 0.0283cbm | 5019318551512 |
| BT8428-150 | Black | BT8428-150/B | 1/1 | 0/0 | 13.5kg / 3.02kg | 0.0733cbm / 0.0269cbm | 5019318551420 |
| BT8428-150 | Chrome Pole | BT8428-150/C | 1/1 | 0/0 | 13.5kg / 3.02kg | 0.0733cbm / 0.0269cbm | 5019318551529 |
| BT8428-200 | Black | BT8428-200/B | 1/1 | 0/0 | 13.5kg / 3.75kg | 0.0733cbm / 0.0378cbm | 5019318551437 |
| BT8428-200 | Chrome Pole | BT8428-200/C | 1/1 | 0/0 | 13.5kg / 3.75kg | 0.0733cbm / 0.0378cbm | 5019318551536 |

**This information is intended as a guide only and reflects the current specification at the time of print.
B-Tech accepts no liability for the accuracy of the information contained in this document.**