



B-TECH AV MOUNTS™

**FITS ALL  
SCREENS  
46" - 60"**

# BT8372-2X2

## SYSTEM X™

### UNIVERSAL BOLT DOWN VIDEO WALL STAND FOR 2X2 VIDEO WALLS

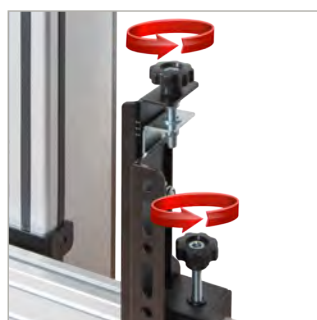
Designed to mount video walls in a 2x2 configuration, the BT8372-2X2 is a fixed position mounting solution with a universal design suitable for all video wall screens from 46" to 60". Ideal for retail displays and other applications with minimal floor space, the BT8372 is part of B-Tech's dynamic System X range; a contemporary mounting solution which is lightweight yet incredibly strong, has a high-end aesthetic quality and comes with important time saving features, such as tool-less 8 point micro-adjustment and a universal screen position spacer to speed up the installation process. For larger installations the BT8372 is also available off-the-shelf as a 3x3 package or for custom configurations please contact us.

#### SPECIFICATION

Recommended screen size	46" - 60"
Max load	50kg (per screen)
VESA® & non-VESA fixings	200 x 200 up to 600 x 400
Dimensions	W: 2005mm H: 1806 up to 2007mm
Base Thickness	6mm
Colour (base & VESA arms)	Black
Colour (verticals)	Black or Silver
Colour (horizontals)	Silver

#### FEATURES

- Universal design suitable for all video wall screens
- Small footprint for an un-obtrusive installation into confined areas
- High-end aesthetic quality
- Tool-less micro-adjustments at 8 points for seamless screen alignment
- Integrated cable management
- Collar compatible accessories such as shelves can be fitted directly to the extrusion
- Includes re-usable screen position spacer to aid installation of screens
- Safety screws help prevent unauthorised removal of screens



8 point tool-less micro-adjustment for seamless screen alignment



Small footprint base is ideal for shop windows and cable management covers hide untidy cables for a neat install



Fit System 2 compatible accessories such as shelves without using collars



Screen spacer designed to eliminate calculations and guess work when installing horizontal rails



PER SCREEN

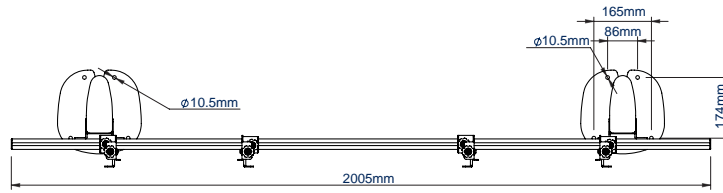
#### ALTERNATIVE CONFIGURATIONS



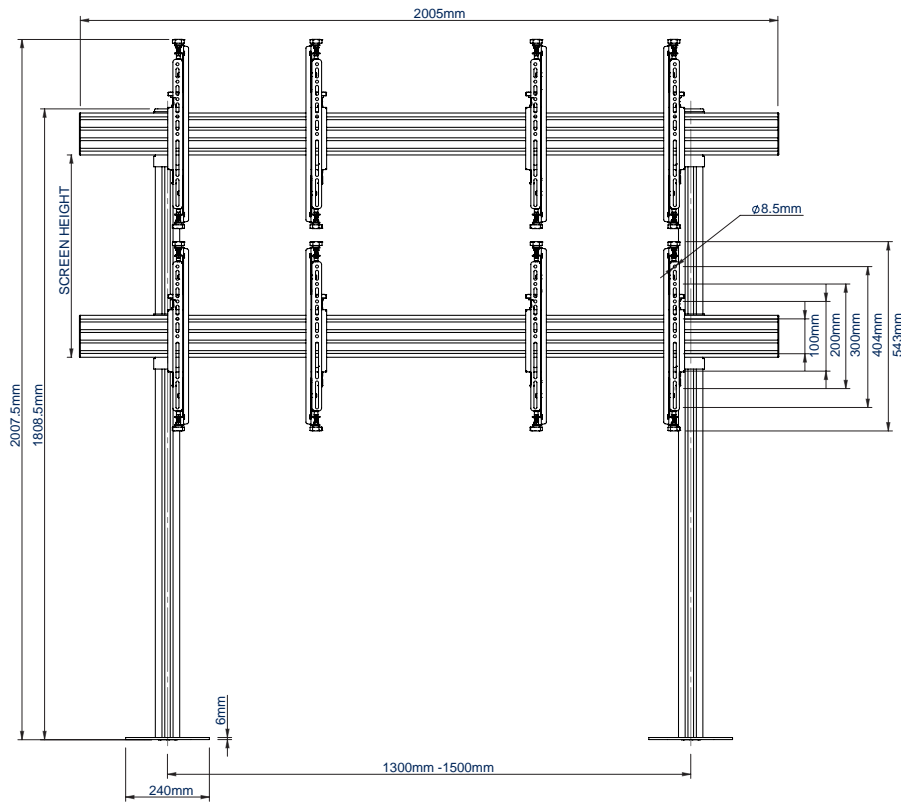
The BT8372-2x2 is an off-the-shelf kit designed for a common video wall setup. There are actually over 2000 different configurations of BT8372 available! Visit our online configuration tool to specify setups of up to 6x4 with different options such as screen size, orientation and leg height.

Try now at  
[www.btechavmounts.com/systemx-configurator](http://www.btechavmounts.com/systemx-configurator)

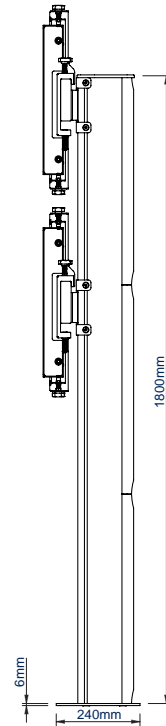




TOP VIEW



FRONT VIEW



SIDE VIEW

**PACKING INFORMATION**

PLEASE NOTE, THIS IS A 3 BOX ITEM THAT WILL BE PACKED AND DELIVERED ON A CUSTOM PALLET. ESTIMATED DIMS: 240 x 100 x 60cm WEIGHT: 95kg

COLOUR:	ORDER REF:	EAN CODE:	MASTER CARTON WEIGHT:	MASTER CARTON CUBE:
Black w/Black Columns	BT8372-2X2/BB	5019318501487	23kg / 17kg / 26.5kg	0.129cbm / 0.103cbm / 0.064cbm
Black w/Silver Columns	BT8372-2X2/BS	5019318501494	23kg / 17kg / 26.5kg	0.129cbm / 0.103cbm / 0.064cbm

**ACCESSORIES AND RELATED PRODUCTS**



**BT8372-3X3**  
Universal Bolt Down Video Wall Stand  
for 3x3 Video Walls



**BT8371-2X2**  
Universal Mobile Video Wall Stand  
for 2x2 Video Walls



**BT8371-3X3**  
Universal Mobile Video Wall Stand  
for 3x3 Video Walls



**BT7032 / BT7172 / BT7173 / BT7174**  
AV Accessory Shelves can be attached  
directly to a vertical column