

The AccelTex Solutions Cisco AP suspended ceiling tile enclosure mount secures and protects a Cisco 3700 series AP with the Hyperlocation module and the Hyperlocation antenna within a ceiling tile grid. This enclosure mount fits in a standard 2x2 suspended ceiling tile grid opening and is the most convenient and secure method for AP mounting in a suspended ceiling environment.

Part Number: ATS-CT-CISCO2-2X2

> FEATURES

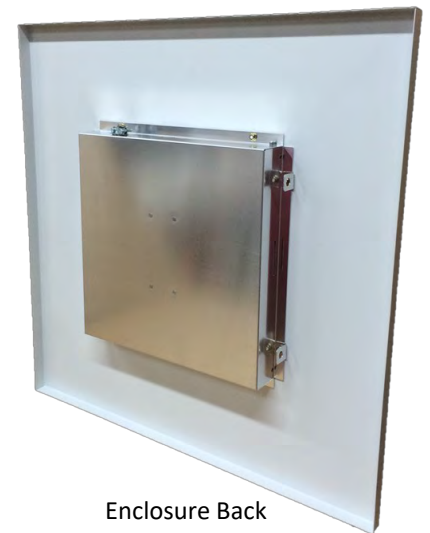
- Universal Design - Just replace the door when migrating to a new AP
- Door is easily removed and can be installed to open in any direction with our innovative spring hinge system
- AP installs onto an integrated mounting plate with no tools
- Key lock for security
- Includes integrated tabs for securing enclosure mount to permanent building structure
- Shallow back box (1.5") allows installation into the tightest ceiling clearances

> BENEFITS

- Easy to Install
- No ceiling tile grid modification necessary (if mounting into a 2'x2' grid)
- Service the AP without removing the enclosure mount from ceiling
- Lightweight aluminum design reduces ceiling strain and load
- Simple, one person installation
- Blends seamlessly into ceiling
- No tools required for installation

> MOUNT SHIPS WITH

- 2x2 Suspended Ceiling Tile Enclosure Mount with installed Cisco2 Door Kit
- Cord Grip
- Key



Enclosure Back



Side Profile



Integrated mounting tabs on two sides

Key Lock



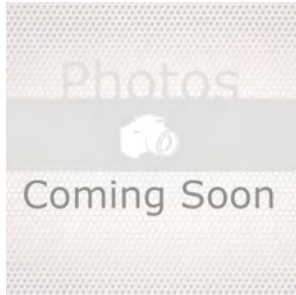
Spring Hinge



Integrated Mounting Plate, Cord Grip and Repositionable Door



CISCO AP SUSPENDED CEILING TILE ENCLOSURE MOUNT



The AccelTex Solutions Cisco AP suspended ceiling tile enclosure mount secures and protects a Cisco 3700 series AP with the Hyperlocation module and the Hyperlocation antenna within a ceiling tile grid. This enclosure mount fits in a standard 2x2 suspended ceiling tile grid opening and is the most convenient and secure method for AP mounting in a suspended ceiling environment.

Part Number: ATS-CT-CISCO2-2X2

> MECHANICAL SPECIFICATIONS

Dimensions: 23.75" x 23.75" x 1.5" (603.25mm x 603.25mm x 38.1mm)

Weight (without AP): 3.8 lb (1.72 kg)

Material: Aluminum

Color: White

Lock: Key Lock

Installation: Suspended Ceiling (includes tabs for securing to building structure)

Equipment Installation: AP Mounting Feet onto Included Mounting Bracket

> ENVIRONMENTAL SPECIFICATIONS

Installation Environment: Indoor

> STANDARDS, TESTING AND CERTIFICATIONS

Designed to meet NEC300-22 and 300-23 to mount the Cisco APs in plenum/air handling areas

> WARRANTY

2 Year Limited Warranty