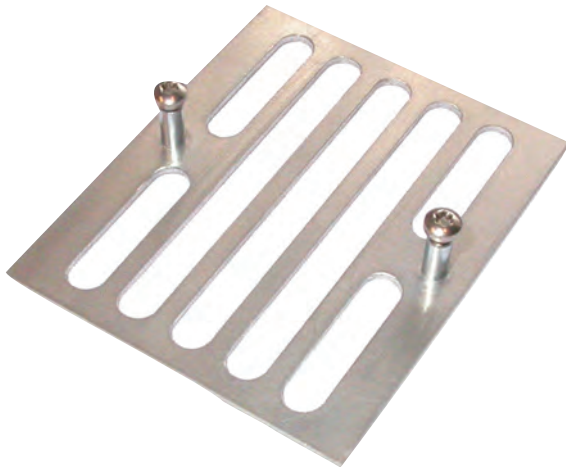


# LBB 4446/00 Set of Supervision Board Brackets (10 pcs)

www.boschsecurity.com



**BOSCH**  
Invented for life



The supervision board brackets are intended for mounting LBB 4442/00 Supervision Slave Boards, LBB 4441/00 Loudspeaker Supervision Boards and LBB 4443/00 EOL Supervision Boards into or onto loudspeaker cabinets, or into junction boxes and equipment racks.

## Parts included

Quantity	Component
10	Supervision Board Brackets

## Ordering information

### **LBB 4446/00 Set of Supervision Board Brackets (10 pcs)**

Aluminum brackets for mounting supervision slave boards in a loudspeaker cabinet or cable box (set of 10 pieces).

Order number **LBB4446/00**

## Accessories

### **LBB 4441/00 Loudspeaker Supervision Board**

Loudspeaker supervision slave PCB for mounting on a loudspeaker, operates with LBB4440/00 for monitoring the integrity of the loudspeaker.

Order number **LBB4441/00**

### **LBB 4442/00 Line Supervision Set**

Master and slave PCB for supervising a single loudspeaker line, the master is mounted in a Praesideo network connected power amplifier (one per channel), the slave is connected at the end of the loudspeaker line.

Order number **LBB4442/00**

### **LBB 4443/00 End of Line (EOL) Supervision Board**

Line supervision slave PCB for connecting to the end of a loudspeaker line or the end of a spur, operates with LBB4440/00 to monitor the integrity of the line.

Order number **LBB4443/00**