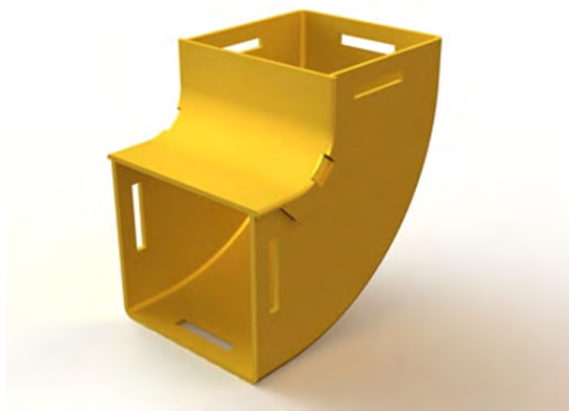


## Mighty Mo Fiber Raceway, Vertical Elbow with cover, 90deg up, 4" x 4", yellow

OR-MMFVEC90U4X4-Y



Vertical Elbows are used to connect horizontal routes at different heights or to allow the fiber path to be raised or lowered to avoid obstacles. They are available with or without covers. The retrofit versions come with split covers that are used where there is existing fiber.

### features & benefits

- Made of Noryl fire retardant plastic:** Certified to UL94VO and Halogen free.
- Snap together slot and joiner system:** Stronger and quicker assembly of raceway and fittings.
- Raceway and fittings available in 5 sizes:** A solution for any size and density of installation.
- Bend radius control in all fittings:** Protects the performance of installed fiber.

### specifications

#### General Info

Product Series: Mighty Mo  
Type: Raceway Fittings

#### Construction Information

Material1: Noryl

#### Dimensions

Height U S: 4"  
Width U S: 4.00"