



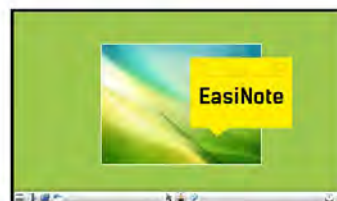
86" Interactive 4K LCD Touchscreen with integrated annotation software and USB playback

The TH8667MIS-B1AG is an 86", 20-point touchscreen with integrated interactive EasiNote writing software allowing users to make annotations on files opened directly from a USB device or internal storage. The 4K (3840 x 2160) resolution offers a gigantic viewable area with 4 times more information and work space than a Full HD screen. The display supports also playback of presentations, video and almost any other type of content stored on the USB device or internal memory. The high quality commercial IPS LCD panel guarantees great viewing angles from all sides and delivers superb image performance from anywhere in a class or meeting-room. The Anti Glare coating drastically reduces ambient reflection in high brightness environments without compromising sharp clarity of the content. Unlike interactive whiteboards, there are no shadows or reductions in image performance to contend with. The TH8667MIS-B1AG is a perfect solution for educational and corporate use.



TOUCH TECHNOLOGY - INFRARED

The infrared technology uses infrared backlight. A touch event is registered with great accuracy when the infrared light is blocked by finger or stylus. This technology does not rely on an overlay or substrate, so it is impossible to physically "wear out" the touchscreen. Moreover the display characteristics remain virtually unaffected by the touch functionality.



EASINOTE

The integrated interactive EasiNote software turns you monitor into an whiteboard incl. save as image option to internal memory or USB-stick.

1. DISPLAY CHARACTERISTICS

DIAGONAL	85.6"; 217.4cm
ASPECT RATIO	16 : 9
PANEL	IPS Direct LED, AG coated glass
NATIVE RESOLUTION	4K 3840 x 2160 (8.3 megapixel)
BRIGHTNESS	375 cd/m² typical
BRIGHTNESS	330 cd/m² with touch panel
STATIC CONTRAST	1 200 : 1 with touch panel
RESPONSE TIME	8 ms
VIEWING ZONE	horizontal/vertical: 178° / 178°; right/left: 89° / 89°; up/down: 89° / 89°
TOUCHTECHNOLOGY	infrared, multi touch (20 compatible touch points - HID, only with supported OS) activated by finger or pen, no pressure required to generate touch
TOUCH POINTS	20
GLASS THICKNESS	4 mm
GLASS HARDNESS	7H minimum
LIGHT TRANSMITTANCE	88%
DISPLAY AREA H X W	1065.96 x 1895.04 mm; 42" x 74.6"
PIXEL PITCH H X V	0.4935 x 0.4935 mm
RESOLUTIONS	VGA (max. 1920 x1080), HDMI v1.3 (max. 3840x2160 @30Hz), HDMI v2.0 (max. 3840 x 2160 @60Hz), DP (max. 3840 x 2160 @30Hz)
HORIZONTAL SYNC	30 - 83 KHz
VERTICAL SYNC	24 - 75 Hz
SYNCHRONIZATION	Separate Sync
DISPLAY COLOURS	10.7 B
MAX. NON-STOP OPERATING TIME	24 hours/day

2. INTERFACES / CONNECTORS / CONTROLLERS

VIDEO IN	2x VGA, 2x HDMI 1.3, HDMI 2.0, DisplayPort, Comp. (MiniJack), AV
VIDEO OUT	HDMI
AUDIO IN	2x MiniJack
AUDIO OUT	Coax, MiniJack, speakers
CONTROLS	RS232C, RJ45 (LAN for Android), USB (touch)
USB MEDIA PLAYBACK	yes
OTHER	LAN for Android, 2x USB 2.0 (media playback / peripherals / storage)

3. FEATURES

PLUG & PLAY	VESA DDC2B™
CONTROLS	On-Screen-Display in 8 languages (EN, FR, NL, DE, PL, RU, CZ, IT) controlled by side controls or a remote control

USER CONTROLS	general setting (input, auto, volume, brightness), audio setting (volume, bass, treble, balance, sound mode, mute), screen setting, display setting (brightness, contrast, hue, sharpness, picture mode, colour temp.), adjust setting (horizon adjust, verticle adjust, phase adjust, clock adjust, auto), advanced setting (ethernet checking, display, storage, apps, language&input, date&time, startup & shutdown, floating style setting, password, input setting, about)
SPEAKERS	2 x 10 W (Stereo)
REGULATIONS	CE, CB, CU, TÜV-Bauart
EXTRA FUNCTIONS	integrated, interactive annotation tools and applications allowing to browse the Internet, show documents, presentations, video, etc.
VESA MOUNTING	800 x 600 mm
COLOUR	Black
EXTERNAL CONTROLS	remote control
ORIENTATION	landscape
METAL BEZEL	yes
EASINOTE	yes

4. ACCESSORIES

DRIVER	multi-touch: Windows® 7/8/10, single-touch: XP, Vista, Linux, Mac OSX
INCLUDED ACCESSORIES	power cable, VGA signal cable, HDMI signal cable, USB cable, remote control, battery (2x), touch pen (3x), iiyama logo sticker, cable ties, quick start guide, safety guide
OPTIONAL ACCESSORIES	wall mount MD 052B2010 (landscape)

5. POWER MANAGEMENT

POWER SUPPLY	AC 100 - 240 V, 50 / 60 Hz, 4A
POWER SUPPLY UNIT	internal
POWER USAGE	390 W typical; max. 0,5 W in Power management mode
POWER MANAGEMENT	VESA DPMS

6. EU ENERGY EFFICIENCY LABEL

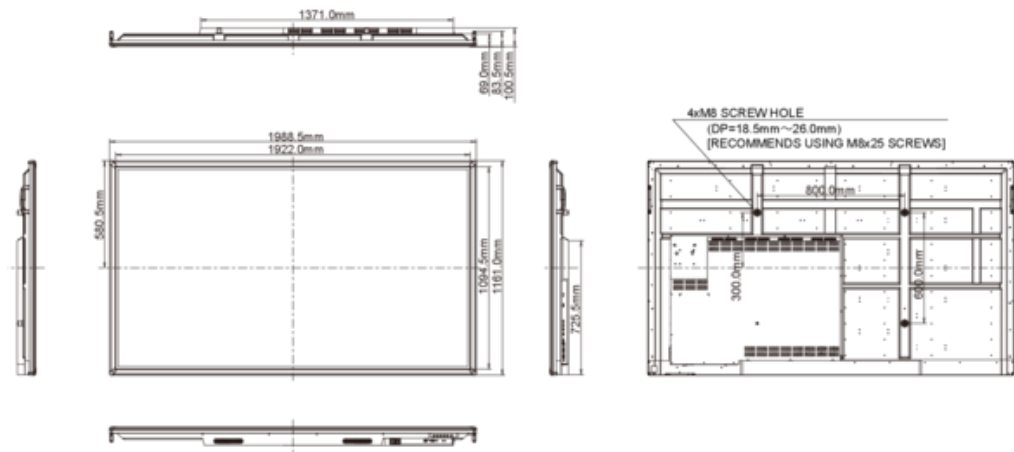
ENERGY EFFICIENCY CLASS	C
ON MODE POWER CONSUMPTION	389.7W
ANNUAL ENERGY CONSUMPTION	569 kWh/annum*
VISIBLE SCREEN DIAGONAL	217 cm; 85.6"; (86" segment)

This is information under Regulation (EU) No 1062/2010.

**Based on the power consumption of the television operating 4 hours per day for 365 days. The actual energy consumption will depend on how the television is used.*

7. DIMENSIONS / WEIGHT

DIMENSIONS W X H X D	1988.5 x 1161 x 100.5 mm
WEIGHT	75 kg



All trademarks and registered trademarks acknowledged. E & O E. Specification subject to change without notice. All LCD's comply with ISO-9241-307:2008 in connection with pixel defects.

© IIYAMA CORPORATION (). ALL RIGHTS RESERVED.