

Description

Talk-A-Phone's WEBS-MT/R Emergency Phone Tower is an ideal security solution for remote and high-risk areas where wide-area audio broadcast is desired. The unit can be used as part of the Talk-A-Phone's Wide-Area Emergency Broadcast System (WEBS®) to notify large masses of people of an event with an intelligent message.

Standing over ten feet tall, this vandal-resistant tower serves as a great deterrent to crime. An always-lit LED Blue Light mounted atop the tower provides high visibility and gives passers-by a sense of security. Emergency call can be placed with a simple push of a button. At the same time, the LED Blue Light begins to flash, attracting attention to the location. The Emergency Phone faceplate is illuminated at all times for clear visibility during the night.

Talk-A-Phone's WEBS-MT/R Emergency Phone Towers are often used at university and college campuses, parking facilities, shopping malls, medical centers, industrial campuses and transit facilities.

Features

- Send live or prerecorded audio messages through WEBS Contact® Mass Notification platform
- Concealed high-power speakers provide 360° coverage
- Separate volume controls for each direction
- Local announcement capability: security personnel can unlock the local command station and make on-site announcements
- Attention-getting LED Blue Light is included and mounted atop the unit. The LED Blue Light is continuously lit and flashes for duration of a call when "EMERGENCY" button is pressed to draw attention to the unit
- LED Blue Light is housed in a protective polycarbonate housing (except OP4, OP5)
- Emergency Phone faceplate is illuminated at all times by an LED Panel Light
- Vandal-resistant structure and coating designed to resist extreme weather conditions
- A variety of signage, graphics and color choices are available
- ADA-compliant

Specifications

Dimensions (W x D x H):	12.8 x 11.0 x 124.0 in. (324 x 280 x 3150 mm) with 2 in. radius corners
Weight:	430 lbs. (195 kg)
Construction:	0.25 in. steel
Coating:	High-gloss, multi-layer, corrosion-inhibitive system with resistance to UV-fade and graffiti protection
Colors:	Safety Blue is standard. Available in custom colors.
Signage:	3.25 in. high reflective white "EMERGENCY" lettering with wide-angle visibility is standard. Available in custom colors, lettering and graphics.
Audio Broadcast:	Four 40 watt speakers, 123 dBA @ 1 meter
Lighting:	LED Blue Light: 209 lumens peak, 78 flashes per minute, 70% of initial lumens after 50,000 hours of operation
	LED Panel Light: Ultra bright LEDs, 50,000 hour lifetime
Power:	Maximum total 130 watts, 110-240VAC/12VDC
Mounting:	Mounts into concrete foundation using included hardware (shipped in advance)
Warranty:	5-year warranty on tower (2-year warranty on electronics)



WEBS-MT/R – Radius Emergency Phone Tower with WEBS®

Options

WEBS-MT/R Configuration	Emergency Phone Options	Tower Options
Analog Connectivity	ETP-400 Series Phone	WEBS-MT/R-OP2 includes a housing for mounting your own fixed CCTV camera inside the tower at average face height. WEBS-MT/R-OP3 includes a Honeywell fixed day/night CCTV camera inside the tower at average face height.
IP Connectivity	VOIP-500 Series Phone	WEBS-MT/R-OP4 includes an arm for mounting your own CCTV dome camera above the tower. WEBS-MT/R-OP5 includes an arm for mounting an AD Speed-Dome Ultra camera above the tower.

WEBS-MT/R tower includes a LED Blue Light, a LED Panel Light and an Anchor Bolt Kit. Emergency Phone is purchased separately.

Accessories

Mass Notification:

Order **WEBS-CONTACT** Mass Notification/Polling software to broadcast live and pre-recorded audio and text messages through a wide variety of notification mediums. Includes SMS, Email, RSS, and audio broadcast notifications (requires a VOIP-500 series phone or WEBS-CM-2).

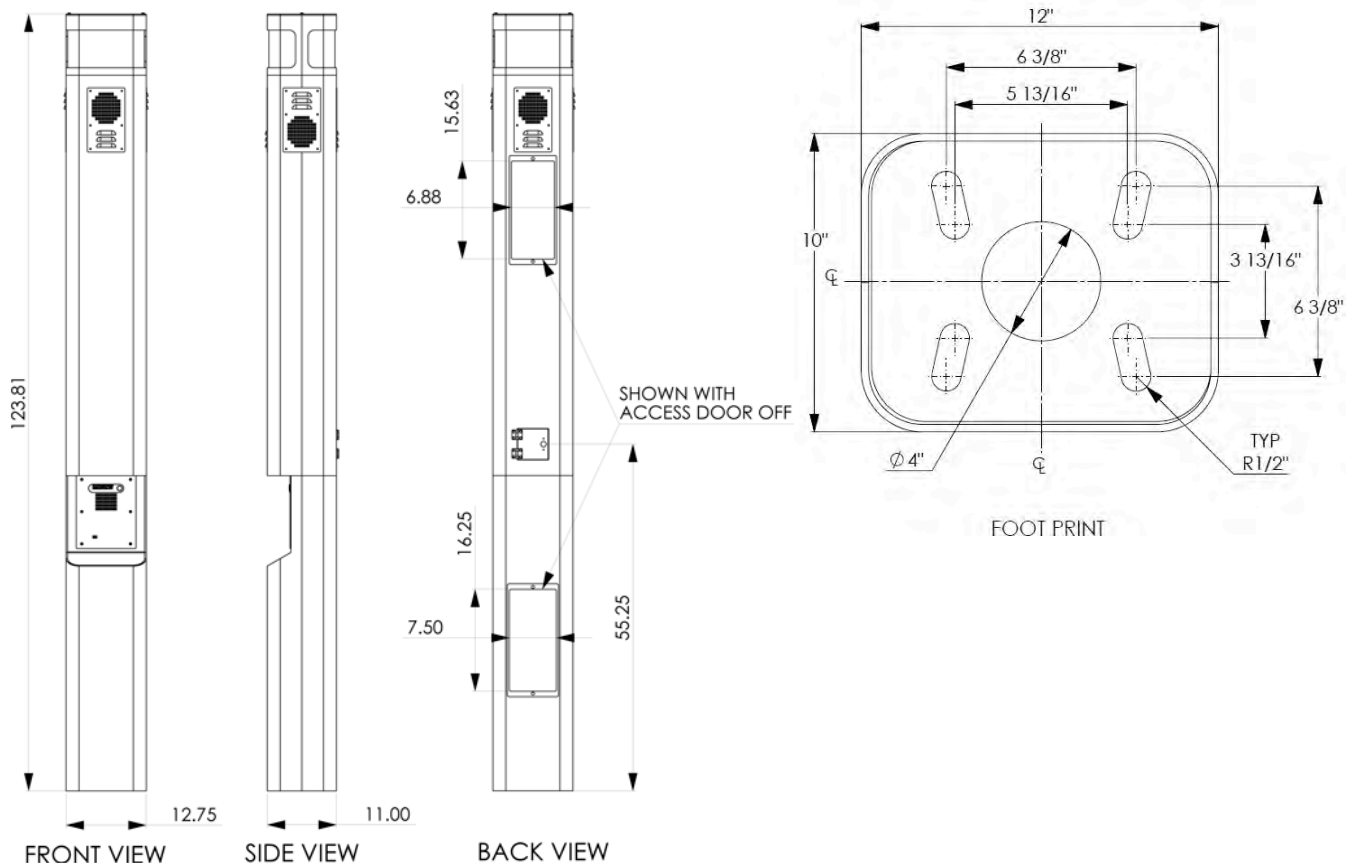
Communications Module:

Order **WEBS-CM-2** WEBS Communications Module to broadcast messages via WEBS-CONTACT when used with ETP-400 series phone.

Power Backup System:

Order **WEBS-BACKUP** power reserve backup system to include the battery backup for one hour of continuous operation after three hours no external power.

Dimensional Diagram



All dimensions are in inches and are provided for reference only.

Rev. 12/8/16