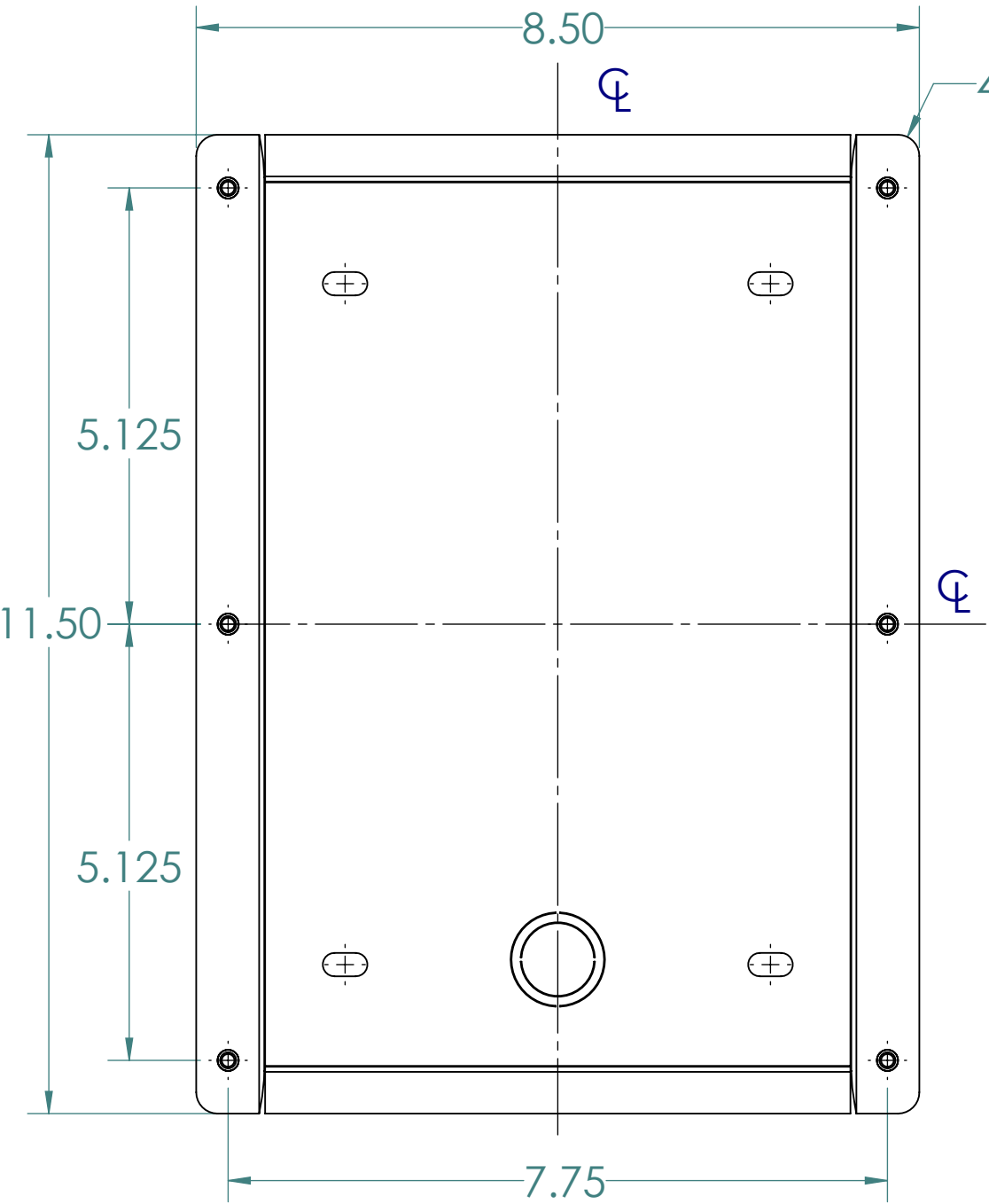
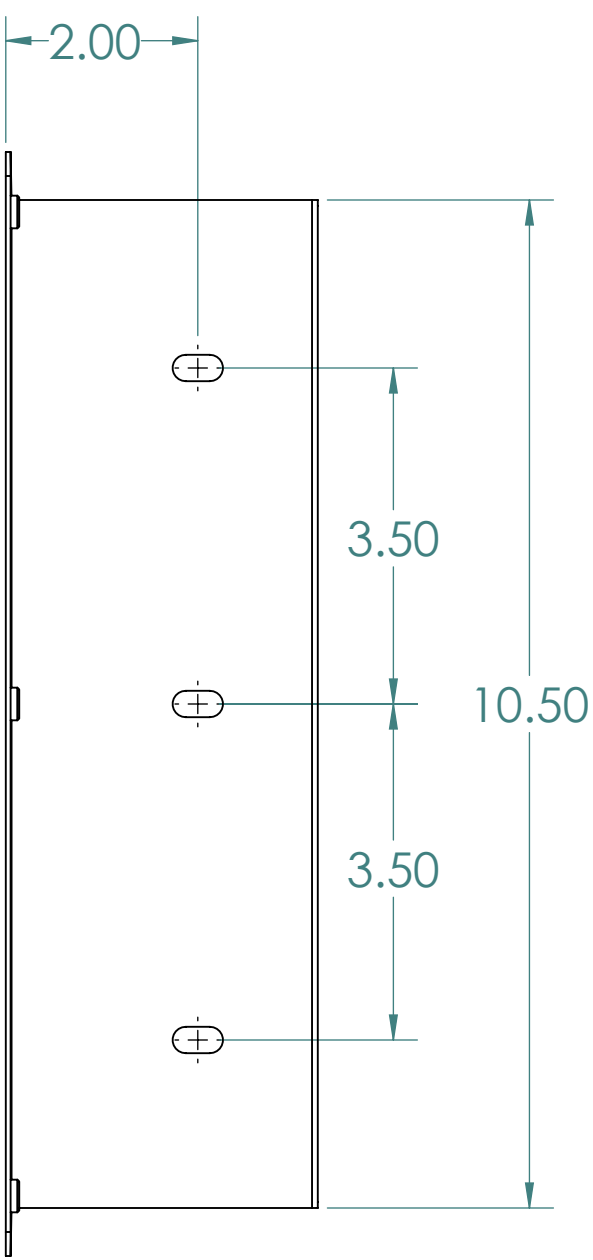


GENERAL NOTES:

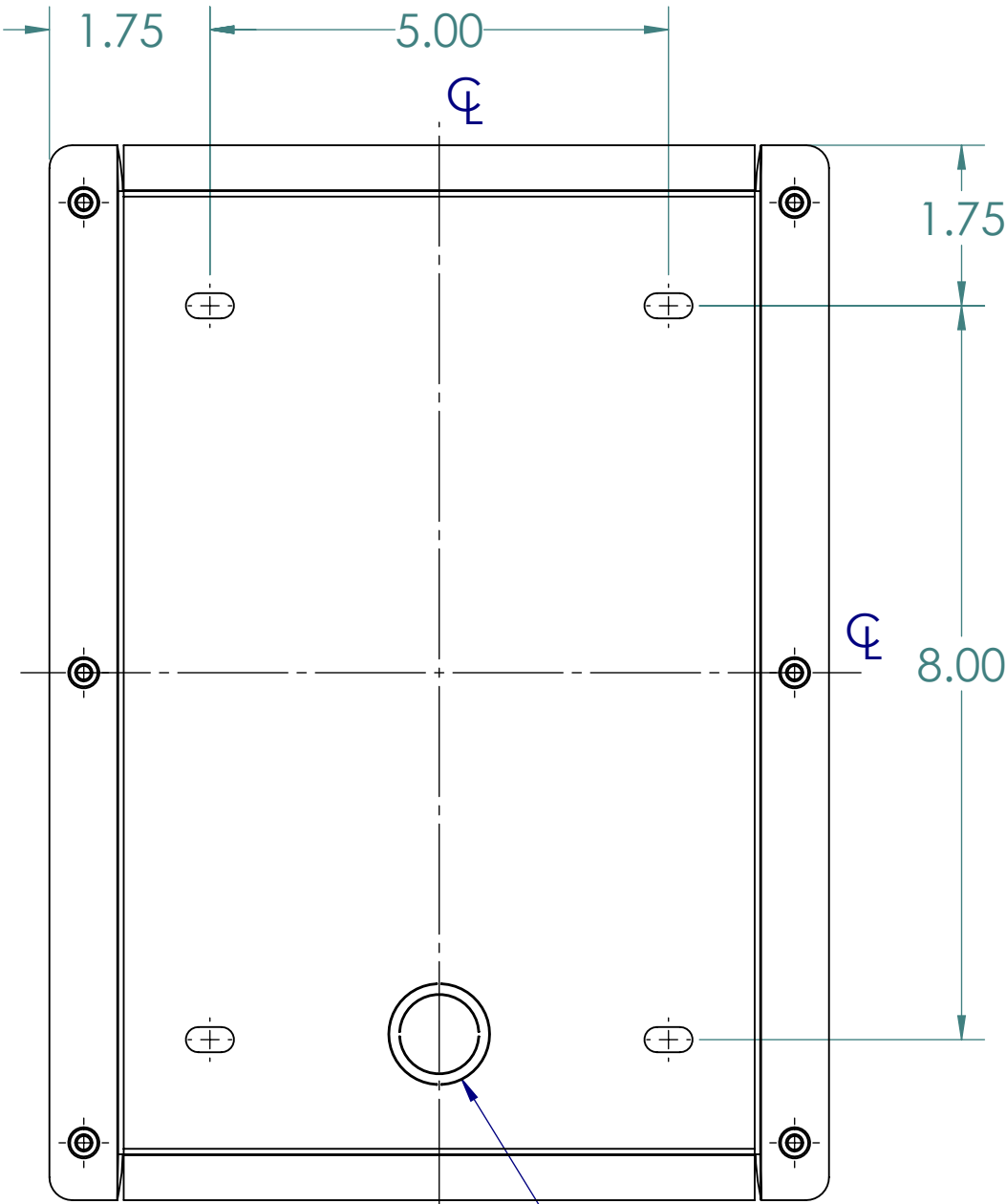
THE MS-600 FLUSH MOUNT SLEEVE INCLUDES A GASKET THAT CAN INSTALLED BETWEEN THE MS-600 AND THE WALL FOR SEALING PURPOSES.



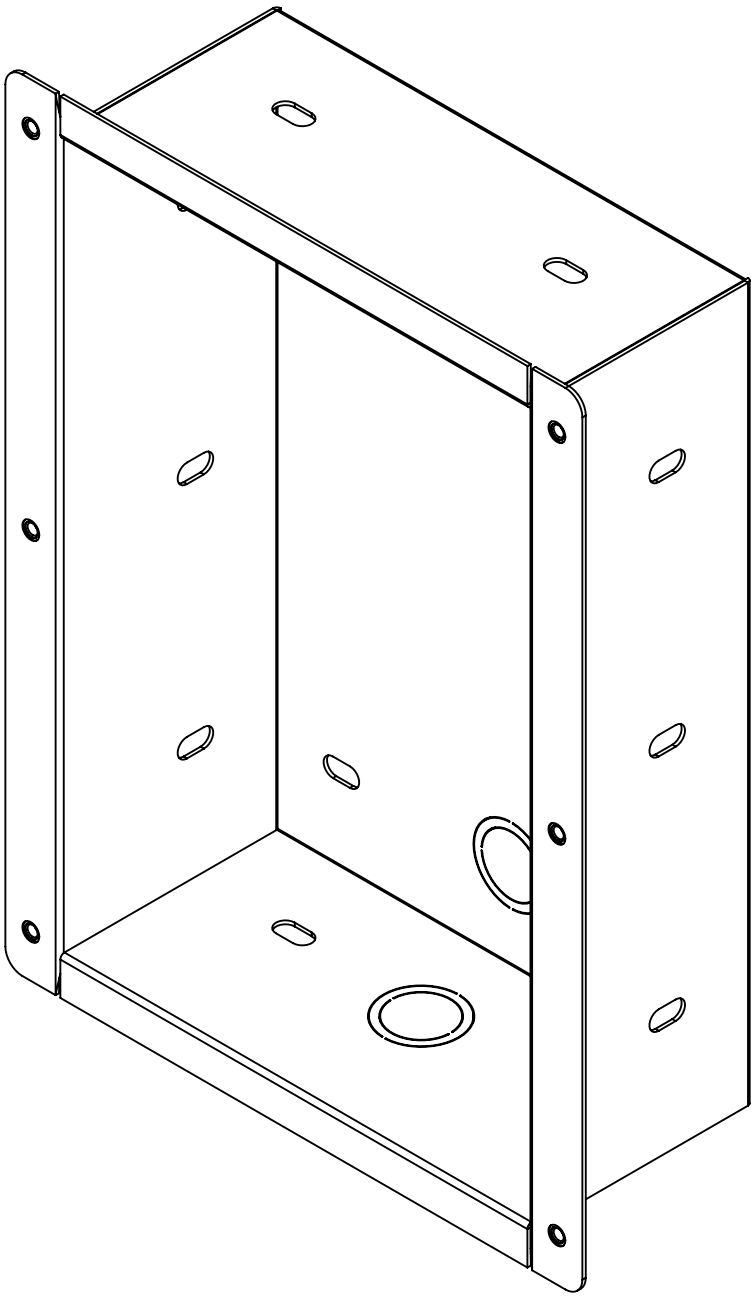
FRONT VIEW



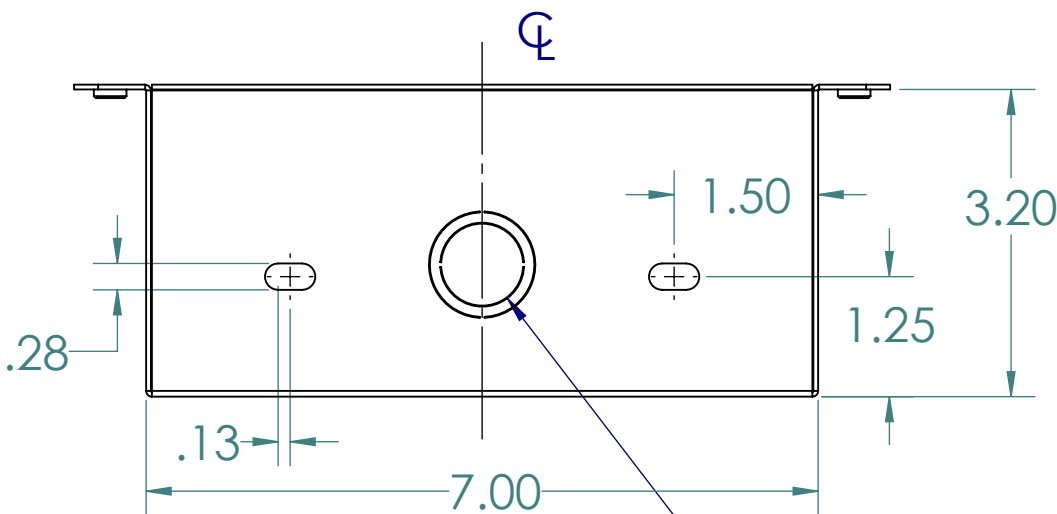
SIDE VIEW



REAR VIEW



ISOMETRIC VIEW



FOOT PRINT

KNOCK OUT FOR  
1/2" OR 3/4" CONDUIT

KNOCK OUT FOR  
1/2" OR 3/4" CONDUIT

FINISH  
ELECTROPLATED ZINC  
  
PROPRIETARY AND CONFIDENTIAL  
THE INFORMATION CONTAINED IN THIS  
DRAWING IS THE SOLE PROPERTY OF  
TALK-A-PHONE COMPANY. ANY  
REPRODUCTION IN PART OR AS A WHOLE  
WITHOUT THE WRITTEN PERMISSION OF  
TALK-A-PHONE COMPANY IS PROHIBITED.

1.0	PRODUCTION RELEASE	10/9/2015	K PATEL
REV.	DESCRIPTION	DATE	APPROVED
REVISIONS			
	NAME	DATE	
DRAWN	Z CARNAHAN	10/9/2015	
CHECKED	C WONG	10/9/2015	
ENG APPR.			
MFG APPR.			
Q.A.			
COMMENTS:			
DWG. NO.			
SIZE	PART NO. 24541	REV	
C	DWG. TITLE: MS-600 MOUNTING SLEEVE	1.0	
SCALE: 1:2	WEIGHT:	SHEET 1 OF 1	

**TALKAPHONE**  
TALK-A-PHONE CO.  
7530 N. NATCHEZ AVE. NILES, IL 60714  
WWW.TALKAPHONE.COM