



TALKAPHONE

ETP-MTE ECO TOWER™ EMERGENCY PHONE TOWER

THE ECO TOWER™ EMERGENCY PHONE TOWER, MODEL ETP-MTE, COMBINES ECONOMY AND ECOLOGY INTO ONE STYLISH PRODUCT. THE LIGHTWEIGHT ALUMINUM CONSTRUCTION REDUCES ITS ECOLOGICAL FOOTPRINT AND ALLOWS FOR ONE-PERSON INSTALLATION

FEATURES

- Light weight aluminum construction for reduced ecological footprint and one-person installation
- Durable, multilayer powder coating achieves near-zero waste and VOC (volatile organic compound) emissions
- Modular construction allows for easy upgrades
- Optimal internal mounting plates and shelves provide clean mounting solutions for accessories
- Emergency Phone is illuminated at all times by an LED Panel Light
- Vandal-resistant and designed to resist extreme weather conditions
- A variety of signage, graphics and color choices are available
- Easily mount any Talk-A-Phone ETP-400 Series or VOIP-500 Series Emergency/Information Phone into the unit (sold separately)
- ADA-compliant



ETP-MTE - ECO TOWER™
Emergency Phone TowerETP-MTE-W - Wireless/
Switched Power ECO TOWER™
Emergency Phone TowerETP-MTE-WP - Wireless ECO
TOWER™ Emergency Phone
Tower with Pole

Construction:	0.125 in. aluminum	0.125 in. aluminum	0.125 in. aluminum
Dimensions (WxDxH):	10.0 x 6.8 x 113.0 in. (254 x 171 x 2870 mm)	10.0 x 6.8 x 124.0 in. (254 x 171 x 3150 mm)	10.0 x 6.8 x 148.0 in. (254 x 171 x 3759 mm) including pole and Blue Light
Weight:	45 lbs. (20.4 kg)	50 lbs. (22.7 kg)	60 lbs. (27.2 kg)
Coating:	High-gloss, multi-layer, corrosion-inhibitive system with resistance to UV-fade and graffiti protection	High-gloss, multi-layer, corrosion-inhibitive system with resistance to UV-fade and graffiti protection	High-gloss, multi-layer, corrosion-inhibitive system with resistance to UV-fade and graffiti protection
Colors:	Blue and Red are standard. Available in custom colors.	Blue and Red are standard. Available in custom colors.	Blue and Red are standard. Available in custom colors.
Signage:	3.25 in. high reflective white "EMERGENCY" lettering with wide-angle visibility is standard. Available in custom colors, lettering, and graphics.	3.25 in. high reflective white "EMERGENCY" lettering with wide-angle visibility is standard. Available in custom colors, lettering, and graphics.	3.25 in. high reflective white "EMERGENCY" lettering with wide-angle visibility is standard. Available in custom colors, lettering, and graphics.
Lighting:	LED Blue Light: 209 lumens peak, 78 flashes per minute. 50,000 hour lifetime LED Panel Light: Ultra bright LEDs, 50,000 hour lifetime	LED Blue Light: 209 lumens peak, 78 flashes per minute. 50,000 hour lifetime LED Panel Light: Ultra bright LEDs, 50,000 hour lifetime	LED Blue Light: 209 lumens peak, 78 flashes per minute. 50,000 hour lifetime LED Panel Light: Ultra bright LEDs, 50,000 hour lifetime
Power:	9 watts, 12-24VDC, 24/120VAC	9 watts, 12-24VDC, 24/120VAC	9 watts, 12-24VDC, 24/120VAC
Mounting:	Mounts into concrete foundation using included hardware (shipped in advance). Mounting options available for pre-poured parking decks.	Mounts into concrete foundation using included hardware (shipped in advance). Mounting options available for pre-poured parking decks.	Mounts into concrete foundation using included hardware (shipped in advance). Mounting options available for pre-poured parking decks.
Warranty:	2-year warranty	2-year warranty	2-year warranty

ETP-MTE-ARM - ECO TOWER™
Camera Arm



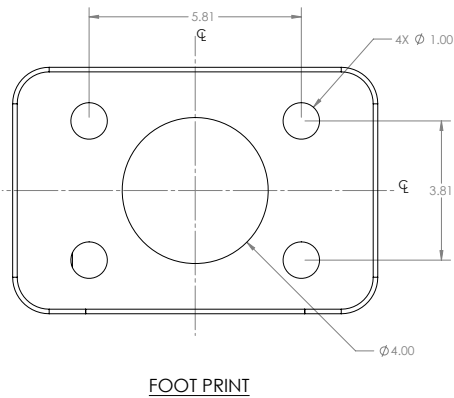
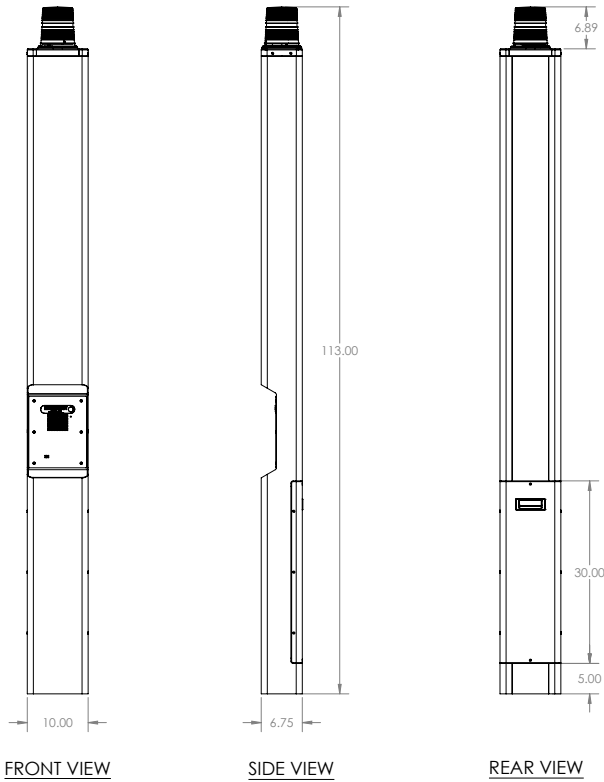
ETP-MTE-72 - ECO TOWER™
Emergency Phone Tower



Construction:	0.125 in. aluminum	0.125 in. aluminum
Dimensions (WxDxH):	10.0 x 13.5 x 43.4 in. (254 x 344 x 1101 mm) not including LED Blue Light	10.0 x 6.8 x 72.0 in. (254 x 171 x 1829 mm)
Weight:	18 lbs. (8.2 kg) - Arm	30 lbs. (13.6 kg)
Coating:	High-gloss, multi-layer, corrosion-inhibitive system with resistance to UV-fade and graffiti protection	High-gloss, multi-layer, - corrosion-inhibitive system with resistance to UV-fade and graffiti protection
Colors:	Blue and Red are standard. Available in custom colors.	Blue and Red are standard. Available in custom colors.
Signage:	N/A	3.25 in. high reflective white "EMERGENCY" lettering with wide-angle visibility is standard. Available in custom colors, lettering, and graphics.
Lighting:	N/A	LED Blue Light: 209 lumens peak, 78 flashes per minute. 50,000 hour lifetime LED Panel Light: Ultra bright LEDs, 50,000 hour lifetime
Power:	N/A	9 watts, 12-24VDC, 24/120VAC
Mounting:	Camera mount has a 1.5" NPT adapter to mount a dome camera. Camera mount can be installed on any basic ECO TOWER emergency phone tower.	Mounts into concrete foundation using included hardware (shipped in advance). Mounting options available for pre-poured parking decks.
Warranty:	2-year warranty	2-year warranty

DIMENSIONAL DRAWING

All dimensions are in inches and are provided for reference only.



TALKAPHONE

THE LEADERS IN SECURITY AND LIFE SAFETY COMMUNICATIONS

7530 North Natchez Avenue
Niles, Illinois 60714

Tel: 773-539-1100
Email: info@talkaphone.com
Web: www.talkaphone.com

ACCESSORIES

Parking Deck Mounting Kit: Order model ETP-PDMK to mount on pre-poured parking deck.

Shelving: Order model ETP-MTE-SHELF to add an internal mounting shelf for accessories. Maximum two shelves per tower.

Mounting Panel: Order model ETP-MTE-PANEL to add an internal mounting panel for accessories. Maximum two panels per tower.

Emergency Phones

VoIP

ANALOG

Single Button Emergency Phone



VOIP-500



ETP-400

Single Button Assistance Phone



VOIP-500C



ETP-400C

Dual Button Emergency Phone



VOIP-500D



ETP-400D

Keypad Emergency Phone



VOIP-500K



ETP-400K