



HD Flex™ Fiber Cabling System Ordering Guide

PANDUIT®

infrastructure for a connected world

HD Flex™ Ordering Guide



Panduit HD Flex™ Fiber Cabling System: Built for Next-Generation Density Demands.

The HD Flex™ Fiber Cabling System is engineered to provide the highest levels of density and serviceability for high-performance data centers. The system is purposely designed to enable organizations to easily scale up density and execute moves, adds and changes quickly and safely, without disrupting adjacent circuits. Technicians can take advantage of the unique benefits provided by the HD Flex™ Cabling System.

- Innovative cable management that positions trunk cables away from the rear of the enclosure, providing enhanced access for moves, adds, and changes
- Split trays inside the enclosure support safe moves, adds, and changes
- Cassettes accessible from the front or back to streamline installation and migrations from 10G to 40G/100G Ethernet
- Convertible enclosures and panels between 6-port and 12-port cassettes and FAPs

Accessories and Ordering Information

HD Flex™ Fiber Enclosures, Panels, and Cable Management Accessories



Part Number	Description
Enclosures	
FLEX1U04	1RU HD Flex™ 4-Port Enclosure.
FLEX1U06	1RU HD Flex™ 6-Port Enclosure.
FLEX1U12	1RU HD Flex™ 12-Port Enclosure.
FLEX2U04	2RU HD Flex™ 4-Port Enclosure.
FLEX2U06	2RU HD Flex™ 6-Port Enclosure.
FLEX2U12	2RU HD Flex™ 12-Port Enclosure.
FLEX4U04	4RU HD Flex™ 4-Port Enclosure.
FLEX4U06	4RU HD Flex™ 6-Port Enclosure.
FLEX4U12	4RU HD Flex™ 12-Port Enclosure.
Panels	
FLEX1UPN06	1RU HD Flex™ 6-Port Panel.
FLEX1UPN12	1RU HD Flex™ 12-Port Panel.
FLEX2UPN06	2RU HD Flex™ 6-Port Panel.
FLEX2UPN12	2RU HD Flex™ 12-Port Panel.
FLEX4UPN06	4RU HD Flex™ 6-Port Panel.
FLEX4UPN12	4RU HD Flex™ 12-Port Panel.
Zero RU Cassette Holder and Bracket	
FLEX-0RUBR06	HD Flex™ 0RU 6-Port Bracket and Cassette Holder.
FLEX-0RUBR12	HD Flex™ 0RU 12-Port Bracket and Cassette Holder.
FLEX-0RUCH06	HD Flex™ 0RU 6-Port Cassette Holder.
FLEX-0RUCH12	HD Flex™ 0RU 12-Port Cassette Holder.
Cable Management Accessories	
FLEX-FCM1UA	1RU HD Flex™ Front Cable Manager.
FLEX-FCM2UA	2RU HD Flex™ Front Cable Manager.
FLEX-FCM4UA	4RU HD Flex™ Front Cable Manager.
FLEX-PLATE1U	1RU HD Flex™ Enclosure Trunk Slack Plate.
FLEX-PLATE4U	4RU HD Flex™ Enclosure Trunk Slack Plate.
FLEX-CLIP12	HD Flex™ Trunk Transition Clip (qty 2); 12-position.
FLEX-CLIP18	HD Flex™ Trunk Transition Clip (qty 2); 18-position.
FLEX-CM12S	HD Flex™ Universal Rear Cable Manager. Includes two 12-position transition managers and one screw mount transition bracket.
FLEX-CM18S	HD Flex™ Universal Rear Cable Manager. Includes two 18-position transition managers and one screw mount transition bracket.
FLEX-CM12C	HD Flex™ Rear Cable Manager for use with PatchRunner Cable Manager (PEV12). Includes four 12-position transition managers and one transition clip plate.
FLEX-CM18C	HD Flex™ Rear Cable Manager for use with PatchRunner Cable Manager (PEV12). Includes four 18-position transition managers and one transition clip plate.

HD Flex™ Ordering Guide

HD Flex™ Fiber Optic Cassettes



Description	Part Number		
	6-port, 12-fiber (1 MPO)	12-port, 24-fiber (2 MPOs)	12-port, 24-fiber (1 MPO)
HD Flex™ Cassettes - Duplex LC			
OM4 Fiber/Optimized Loss (0.50 dB)			
Method A Polarity	FHCZO-12-10AS	FHCZO-24-10AS	FHCZO-24F-10AS
Modified Method A Polarity (Pair flipped)	FHCZO-12-10AF	FHCZO-24-10AF	FHCZO-24F-10AF
Method B Polarity	FHCZO-12-10BN	FHCZO-24-10BN	FHCZO-24F-10BN
OM4 Fiber/Ultra Low Loss (0.35 dB)			
Method A Polarity	FHCZA-12-10AS	FHCZA-24-10AS	—
Modified Method A Polarity (Pair flipped)	FHCZA-12-10AF	FHCZA-24-10AF	—
Method B Polarity	FHCZA-12-10BN	FHCZA-24-10BN	—
OM3 Fiber/Optimized Loss (0.50 dB)			
Method A Polarity	FHCXO-12-10AS	FHCXO-24-10AS	FHCXO-24F-10AS
Modified Method A Polarity (Pair flipped)	FHCXO-12-10AF	FHCXO-24-10AF	FHCXO-24F-10AF
Method B Polarity	FHCXO-12-10BN	FHCXO-24-10BN	FHCXO-24F-10BN
OS2 Fiber/Standard Loss (0.75 dB)			
Method A Polarity	FHC9N-12-10AS	FHC9N-24-10AS	FHC9N-24F-10AS
Modified Method A Polarity (Pair flipped)	FHC9N-12-10AF	—	—



HD Flex™ Fiber Optic Conversion Cassettes



Description	Part Number	
	4-port, 8-fiber (1) 8F MPO)	12-port, 24-fiber (3) 8F MPOs)
HD Flex™ 4-to-1 Conversion Cassettes		
OM4 Fiber/Optimized Loss (0.50 dB)		
Method B Polarity	FHC3ZO-08-10B	FHC3ZO-24H-10B
OM4 Fiber/Ultra Low Loss (0.35 dB)		
Method B Polarity	FHC3ZA-08-10B	FHC3ZA-24H-10B
OM3 Fiber/Optimized Loss (0.50 dB)		
Method B Polarity	FHC3XO-08-10B	FHC3XO-24H-10B
OS2 Fiber/Standard Loss (0.75 dB)		
Method B Polarity	FHC39N-08-10B	FHC39N-24H-10B

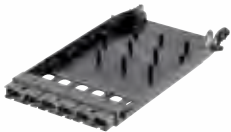
Change B to A in part numbers for Method A conversion cassettes.



HD Flex™ Fiber Optic Cassettes (continued)



Part Number	Description
HD Flex™ LC Splice Cassettes	
OM4 Fiber/Optimized Loss (0.15 dB max. connector IL plus splice loss)	
FHSZO-12-10P	Preloaded with 12 pigtails (250µm) and 12 splice sleeves.
FHSZO-12-10R	Preloaded with 12-fiber ribbon pigtail and 1 ribbon fiber splice sleeve.
OM4 Fiber/Ultra Low Loss (0.10 dB max. connector IL plus splice loss)	
FHSZA-12-10P	Preloaded with 12 pigtails (250µm) and 12 splice sleeves.
FHSZA-12-10R	Preloaded with 12-fiber ribbon pigtail and 1 ribbon fiber splice sleeve.
OM3 Fiber/Optimized Loss (0.15 dB max. connector IL plus splice loss)	
FHSXO-12-10P	Preloaded with 12 pigtails (250µm) and 12 splice sleeves.
FHSXO-12-10R	Preloaded with 12-fiber ribbon pigtail and 1 ribbon fiber splice sleeve.
OS2 Fiber/Standard Loss (0.35 dB max. connector IL plus splice loss)	
FHS9N-12-10P	Preloaded with 12 pigtails (250µm) and 12 splice sleeves.
FHS9N-12-10R	Preloaded with 12-fiber ribbon pigtail and 1 ribbon fiber splice sleeve.
HD Flex™ LC and MPO Fiber Adapter Panels and Blanking Panels	
LC Fiber Adapter Panels	
FHSXN-12-10N	6 LC Duplex Multimode Adapters in Aqua with Zirconia sleeves.
FHS9N-12-10N	6 LC Duplex Singlemode Adapters in Blue with Zirconia sleeves.
MPO Fiber Adapter Panels	
FHMP-6-ABL	6 MPO Type A Adapters (Key-Up to Key-Down) in Black.
FHMP-6-BCG	6 MPO Type B Adapters (Key-Up to Key-Up) in Charcoal Gray.
FHMP-6-ARD	6 MPO Type A Adapters (Key-Up to Key-Down) in Red.
Blanking Panels	
FHSBBL06W	HD Flex™ Blanking Panel for 6-port enclosures and panels.



HD Flex™ Trunk Assemblies

part number

Example: FXUYL7E7EAAM030 = OM3, 24-fiber, indoor small diameter trunk cable, LSZH, PanMPO™ Female to PanMPO™ Female, polarity A, pulling eye, 30 meters.

CHARACTER	1	2	3	4	5	6	7	8	9	10	11	12	13	14	15
EXAMPLE	F	X	U	Y	P	7	5	7	5	X	N	F	0	3	0



1 – Fiber

F = Fiber

2 – Fiber Type

9 = OS2 9/125µm
X = OM3 50/125µm
Z = OM4 50/125µm

3 – Fiber Count

T = 12 fiber
U = 24 fiber

4 – Cable Type

Y = Indoor small diameter trunk cable

5 – Jacket Type

L = Low Smoke Zero Halogen (LSZH)
P = Plenum (OFNP)

6 – Connector Type (End 'A')

5 = Singlemode MPO Female
6 = Singlemode MPO Male
7 = Multimode PanMPO Female
8 = Multimode PanMPO Male

7 – Connector Variant (End 'A')

5 = 39" Breakout with transition

8 – Connector Type (End 'B')

5 = Singlemode MPO Female
6 = Singlemode MPO Male
7 = Multimode PanMPO Female
8 = Multimode PanMPO Male

9 – Connector Variant (End 'B')

5 = 39" Breakout with transition

10 – Construction/Performance

A = Singlemode Polarity A - Standard IL
X = Multimode Polarity A - Optimized IL
Y = Multimode Polarity B - Optimized IL
K = Multimode Polarity A - Ultra Low IL
L = Multimode Polarity B - Ultra Low IL

11 – Other

N = No pulling eye (15 - 100ft, 5 - 30m)
A = Pulling eye end A (>100ft, > 30m)

12 – Unit of Length

F = Feet (OFNP)
M = Meters (LSZH)

13, 14, 15 – Cable Assembly Length

015 - 300ft 1ft increments to 100ft,
5ft increments to 300ft
005 – 100m, 1m increments

HD Flex™ Ordering Guide

HD Flex™ Harness Assemblies

part number

Example: FZTRP8QQSSNF003 = Fiber OM4, 12-fiber, round, plenum rated, PanMPO male to LC duplex LC harness with 61cm equal breakout, standard IL, no pulling eye, 3 feet

CHARACTER	1	2	3	4	5	6	7	8	9	10	11	12	13	14	15
EXAMPLE	F	Z	T	R	P	8	N	Q	S	O	N	F	0	0	3



1 – Fiber Product

F = Fiber

2 – Fiber Type

9 = Singlemode
X = OM3
Z = OM4

3 – Fiber Count

T = 12-fiber
8 = 8-fiber

4 – Cable Type

R = Round

5 – Jacket Type

L = Low Smoke Zero Halogen (LSZH)
P = Optical Fiber Nonconductive Plenum (OFNP)

6 – Connector Type End “A”

5 = Singlemode MPO Female
6 = Singlemode MPO Male
7 = Multimode PanMPO™ Female
8 = Multimode PanMPO™ Male

7 – Connector Variant

N = No variant

8 – Connector Type End “B”

Q = Push/Pull Duplex LC

9 – Connector Variant

S = 24-inch (61 cm)

10 – Performance/Construction

S = Standard IL / Standard Fanout (Singlemode)
O = Optimized IL / Standard Fanout (Multimode)
Q = Standard IL / 4-to-1 Conversion (Singlemode)
V = Optimized IL / 4-to-1 Conversion (Multimode)
N = Ultra Low IL/Standard Fanout (OM4 Only)

11 – Other

N = No variant

12 – Unit of Length

M = Meters
F = Feet

13, 14, 15 – Length

Meters: 001 to 010, 1.5, 2.5, 3.5, 4.5
Feet: 003 to 030

HD Flex™ Patch Cords

part number

Example: FX2ERQ1Q1SNM005 = Fiber, OM3, 2-fiber, 1.6mm cable, riser rated, LC push-pull connector to LC push-pull connector, standard IL, 5 meters

CHARACTER	1	2	3	4	5	6	7	8	9	10	11	12	13	14	15
EXAMPLE	F	X	2	E	R	Q	1	Q	1	S	N	M	0	0	5



1 – Fiber Product

F = Fiber

2 – Fiber Type

X = OM3 50/125µm
Z = OM4 50/125µm
9 = OS1/OS2 9/125µm

3 – Fiber Count

2 = 2-fiber

4 – Cable Type

E = 1.6mm

5 – Jacket Type

L = LSZH (Low Smoke Zero Halogen)
R = OFNR (Riser)

6 – Connector Type

Q = LC Push-Pull connector

7 – Connector Variant

1 = 1st Gen (Low Profile Duplex LC)

8 – Connector Type

Q = LC Push-Pull connector

9 – Connector Variant

1 = 1st Gen (Low Profile Duplex LC)

10 – Performance/Construction

S = Standard IL/Straight Through (A-B)
O = Optimized IL/Straight Through (A-B)
N = Ultra IL/Straight Through (A-B)

11 – Connector Variant

N = No variant

12 – Unit of Length

M = Meters
F = Feet

13, 14, 15 – Length

001 - 050 in 1 meter increments
1/2 meter increments available between 1 and 10 meters, ex 3.5
Foot-length increments available from 1 to 25 feet in Riser-rated jacket only

QuickNet™ 24F MPO Trunk Assemblies

part number

CHARACTER	1	2	3	4	5	6	7	8	9	10	11	12	13	14	15
EXAMPLE	F	Z	U	Y	P	E	5	E	5	X	A	F	0	5	0



1 – Fiber Product

F = Fiber

2 – Fiber Type

9 = Singlemode

X = OM3

Z = OM4

3 – Fiber Count

U = 24-fiber

4 – Cable Type

Y = Small diameter indoor

5 – Jacket Type

P = Plenum

L = LSZH

6 – Connector (End “A”)

E = 24F MPO female

F = 24F MPO male

7 – Connector Variant

5 = HD Flex transition, 1m breakout

8 – Connector (End “B”)

E = 24F MPO female

F = 24F MPO male

9 – Connector Variant

5 = HD Flex transition, 1m breakout

10 – Polarity/Performance

A = Singlemode, Method A, Standard IL

X = Multimode, Method A, Optimized IL

Y = Multimode, Method B, Optimized IL

11 – Pulling Eye

A = Pulling eye

N = No pulling eye

12 – Length, Unit of Measure

F = Feet (Plenum)

M = Meters (LSZH)

13, 14, 15 – Assembly Length

F = 015 to 300 feet (Plenum)

M = 001 to 030 meters (LSZH)

QuickNet™ 24F MPO Interconnect Assemblies

part number

CHARACTER	1	2	3	4	5	6	7	8	9	10	11	12	13	14	15
EXAMPLE	F	Z	U	R	P	E	N	E	N	X	N	F	0	1	5



1 – Fiber Product

F = Fiber

2 – Fiber Type

9 = Singlemode

X = OM3

Z = OM4

3 – Fiber Count

U = 24-fiber

4 – Cable Type

R = Round, 3.6mm indoor

5 – Jacket Type

P = Plenum

L = LSZH

6 – Connector (End “A”)

E = 24F MPO female

F = 24F MPO male

7 – Connector Variant

N = No variant

8 – Connector (End “B”)

E = 24F MPO female

F = 24F MPO male

9 – Connector Variant

N = No variant

10 – Polarity/Performance

A = Singlemode, Method A, Standard IL

X = Multimode, Method A, Optimized IL

Y = Multimode, Method B, Optimized IL

11 – Pulling Eye

N = No pulling eye

12 – Length, Unit of Measure

F = Feet (Plenum)

M = Meters (LSZH)

13, 14, 15 – Assembly Length

F = 003 to 100 feet (Plenum)

M = 001 to 030 meters (LSZH)

HD Flex™ Ordering Guide

QuickNet™ 24F MPO to (2) 12F MPO and (3) 8F MPO Harness Assemblies part number



CHARACTER	1	2	3	4	5	6	7	8	9	10	11	12	13	14	15
EXAMPLE	F	Z	U	R	P	E	N	7	4	X	N	F	0	5	0

1 – Fiber Product

F = Fiber

2 – Fiber Type

9 = Singlemode

X = OM3

Z = OM4

3 – Fiber Count

U = 24-fiber

4 – Cable Type

R = Round, 3.6mm indoor

5 – Jacket Type

P = Plenum

L = LSZH

6 – Connector (End “A”)

E = 24F MPO female

F = 24F MPO male

7 – Connector Variant

N = No variant

8 – Connector (End “B”)

5 = Singlemode, (2) 12F MPO Female

7 = Multimode, (2) 12F PanMPO™ Female Connector

G = Singlemode, (3) 8F MPO Female

J = Multimode, (3) 8F PanMPO™ Female Connector

9 – Connector Variant

4 = HD Flex™ Transition, 24" breakout

10 – Polarity/Performance

A = Singlemode, Method A, Standard IL

X = Multimode, Method A, Optimized IL

Y = Multimode, Method B, Optimized IL

11 – Pulling Eye

N = No pulling eye

12 – Length, Unit of Measure

F = Feet (Plenum)

M = Meters (LSZH)

13, 14, 15 – Assembly Length

F = 003 to 100 feet (Plenum)

M = 001 to 030 meters (LSZH)