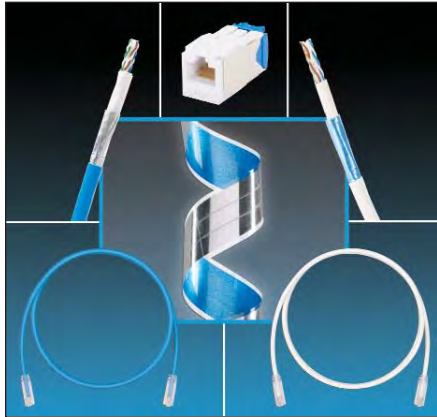


TX6A™ 10Gig™ UTP Copper Cabling System with MaTriX Technology Selection Guide

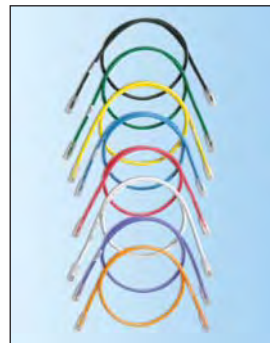


System requirements:

- TX6A™ and TX6A-SD™ 10Gig™ UTP Copper Cabling Systems with MaTriX Technology provides headroom assurance that exceed requirements of ANSI/TIA-568-C.2 Category 6A, IEEE 802.3an-2006, and ISO 11801 Class E_A channel standards
- Jack modules are 100% tested to ensure NEXT and RL performance and are individually serialized for traceability; utilize patent-pending enhanced Giga-TX™ Technology for jack terminations; optimizes performance by maintaining cable pair geometry and eliminating conductor untwist
- Patch cords are 100% performance tested and wired T568B; constructed of 23 or 26 AWG stranded, CM or LSZH UTP copper cable and modular plugs for superior performance nominal cable diameter is 0.275 in. (7.0mm) for 23 AWG and 0.240 in. (6.1mm) for 26 AWG
- Modular patch panels accept all Mini-Com® Modules; angled patch panels facilitate proper bend radius control and minimize the need for horizontal cable managers



CJ6X88TGIW



CPPA48HDWBLY



CPP48HDEWBLY

Part Number	Part Description	Std. Pkg. Qty.	Std. Ctn. Qty.
Jack Module			
CJ6X88TGIW*	Category 6A, RJ45, 10 Gb/s, 8-position, 8-wire universal module. Includes patent pending MaTriX split foil tape.	1	50
Keyed Jack Module			
CJK6X88TGBL*	Keyed, Category 6A, RJ45, 10 Gb/s, 8-position, 8-wire universal module. Includes patent pending MaTriX split foil tape.	1	50
TX6A™ 10Gig™ UTP Patch Cord			
UTP6A3*	Category 6A, 24 AWG, 10 Gb/s UTP patch cord with TX6A™ 10Gig™ Modular Plugs on each end. Includes patent pending MaTriX Tape Technology.	1	10
TX6A-SD™ 10Gig™ UTP Patch Cord			
UTP6ASD3*	Category 6A (SD), 26 AWG, 10 Gb/s UTP patch cord with TX6A™ 10Gig™ Modular Plugs on each end. Includes patent pending MaTriX Tape Technology.	1	50
Keyed TX6A™ 10Gig™ UTP Patch Cord			
UTPK6A3BL*	Keyed, Category 6A, 24 AWG, 10 Gb/s UTP patch cord with TX6A™ 10Gig™ Keyed Modular Plug on one end and TX6A™ 10Gig™ Non-Keyed Modular Plug on the other end. Includes patent pending MaTriX Tape Technology.	1	10
Mini-Com® Angled Modular Patch Panels			
CPPA48HDWBLY	48-port, angled, modular patch panel with rear mounted faceplates. 1 RU.	1	10
CPPA72FMWBLY	72-port, angled, flush mount modular patch panels with rear mounted faceplates. 2 RU.	1	10
CPPA48HDEWBLY	48-port, angled, high density modular patch panel with enhanced labeling features. 1 RU.	1	10
CPPA48HDVNSWBLY	48-port, angled, high density modular patch panel with pre-printed vertical port numbering from top to bottom across panel. 1 RU.	1	10
Mini-Com® Flat Modular Patch Panels			
CPP48HDWBLY	48-port, high density modular patch panel with rear mounted faceplates. 1 RU.	1	10
CPP72FMWBLY	72-port, high density, flush mount modular patch panel with rear mounted faceplates. 2 RU.	1	10
CPP48HDEWBLY	48-port, high density modular patch panel with enhanced labeling features. 1 RU.	1	10
CPP48HDVNSWBLY	48-port, high density modular patch panel with pre-printed vertical port numbering from top to bottom across panel. 1 RU.	1	10

*Contact customer service or visit www.panduit.com for available standard module colors and/or patch cord colors and lengths.

^One rack space = 1.75" (44.45mm).

Unified Physical Infrastructure



building a smarter, unified business foundation
Connect. Manage. Automate.

PANDUIT®

TX6A™ 10Gig™ UTP Copper Cabling System with MaTriX Technology Selection Guide

UTP Copper Cable



**PUP6A04BU-UG
and
PUR6A04BU-UG**

Part Number	Part Description	Flammability Rating	Color	Length
TX6A™ 10Gig™ UTP Copper Cable with MaTriX Technology – 100 meter channel solution				
PUP6A04BU-UG*	Category 6A, plenum (CMP), 4-pair, UTP copper cable. Copper conductors are 23 AWG with FEP insulation. Conductors are twisted in pairs, separated by an integrated pair divider, surrounded by a patent-pending MaTriX tape and protected by a low-smoke flame-retardant PVC jacket.	CMP	Blue	1,000 ft./305m
PUR6A04BU-UG*	Category 6A, riser (CMR), 4-pair, UTP copper cable. Copper conductors are 23 AWG with flame-retardant PE insulation. Conductors are twisted in pairs, separated by an integrated pair divider, surrounded by a patent-pending MaTriX tape and protected by a flame-retardant PVC jacket.	CMR	Blue	1,000 ft./305m
PUL6A04WH-EG*	Category 6A, low smoke zero halogen (LSZH-1), 4-pair, UTP copper cable. Copper conductors are 23 AWG with HDPE insulation. Conductors are twisted in pairs, separated by an integrated pair divider, surrounded by a patent-pending MaTriX tape and protected by a LSZH (IEC 60332-1) jacket.	LSZH-1	White	1,000 ft./305m
PUZ6A04WH-EG*	Category 6A, low smoke zero halogen (LSZH-3), 4-pair, UTP copper cable. Copper conductors are 23 AWG with flame-retardant HDPE insulation. Conductors are twisted in pairs, separated by an integrated pair divider, surrounded by a patent-pending MaTriX tape and protected by a LSZH (IEC 60332-3) jacket.	LSZH-3	White	1,000 ft./305m
PUC6A04BU-EG*	Category 6A (CM) 4-pair UTP copper cable. Copper conductors are 23 AWG. Conductors are twisted in pairs, separated by an integrated pair divider, surrounded by a patent-pending MaTriX tape and protected by a PVC jacket.	CM	Blue	1,000 ft./305m



**PUP6ASD04BU-UG
and
PUR6ASD04BU-CG**

TX6A-SD™ 10Gig™ UTP Copper Cable with MaTriX Technology – 70 meter channel solution				
PUP6ASD04BU-UG*	Category 6A, plenum (CMP), 4-pair, UTP copper cable. Copper conductors are 26 AWG with FEP insulation. Conductors are twisted in pairs, separated by an integrated pair divider, surrounded by a patent-pending MaTriX tape and protected by a low smoke flame-retardant PVC jacket. Ideal for installations up to 70 meters. Smallest diameter Category 6A UTP cable on the market at 0.240 in. (6.1mm).	CMP	Blue	1,000 ft./305m
PUR6ASD04BU-CG*	Category 6A, riser (CMR), 4-pair, UTP copper cable. Copper conductors are 26 AWG with flame-retardant PVC insulation. Conductors are twisted in pairs, separated by an integrated pair divider, surrounded by a patent-pending MaTriX tape and protected by a flame-retardant PVC jacket. Ideal for installations up to 70 meters. Smallest diameter Category 6A UTP cable on the market at 0.240 in. (6.1mm).	CMR	Blue	1,000 ft./305m
PUL6ASD04WH-EG*	Category 6A, low smoke zero halogen (LSZH-1), 4-pair, UTP copper cable. Copper conductors are 26 AWG with HDPE insulation. Conductors are twisted in pairs, separated by an integrated pair divider, surrounded by a patent-pending matrix tape and protected by a LSZH (IEC 60332-1) flame-retardant PVC jacket. Ideal for installations up to 70 meters. Smallest diameter Category 6A UTP cable on the market at 0.240 in. (6.1mm).	LSZH-1	White	1,000 ft./305m
PUC6ASD04BU-EG*	Category 6A, (CM), 4-pair, UTP copper cable. Copper conductors are 26 AWG. Conductors are twisted in pairs, separated by an integrated pair divider, surrounded by a patent-pending matrix tape and protected by a flame-retardant PVC jacket. Ideal for installations up to 70 meters. Smallest diameter Category 6A UTP cable on the market at 0.240 in. (6.1mm).	CM	Blue	1,000 ft./305m

*Contact customer service for region availability and other cable colors.

WORLDWIDE SUBSIDIARIES AND SALES OFFICES

PANDUIT CANADA
Markham, Ontario
cs-cdn@panduit.com
Phone: 800.777.3300

PANDUIT EUROPE LTD.
London, UK
cs-emea@panduit.com
Phone: 44.20.8601.7200

PANDUIT SINGAPORE PTE. LTD.
Republic of Singapore
cs-ap@panduit.com
Phone: 65.6305.7575

PANDUIT JAPAN
Tokyo, Japan
cs-japan@panduit.com
Phone: 81.3.6863.6000

PANDUIT LATIN AMERICA
Guadalajara, Mexico
cs-la@panduit.com
Phone: 52.33.3777.6000

PANDUIT AUSTRALIA PTY. LTD.
Victoria, Australia
cs-aus@panduit.com
Phone: 61.3.9794.9020

For a copy of Panduit product warranties, log on to www.panduit.com/warranty

For more information

Visit us at www.panduit.com

Contact Customer Service by email: cs@panduit.com
or by phone: 800-777-3300 and reference COSG03--SA-ENG

PANDUIT®

©2012 Panduit Corp.
ALL RIGHTS RESERVED.
COSG03--SA-ENG
5/2012