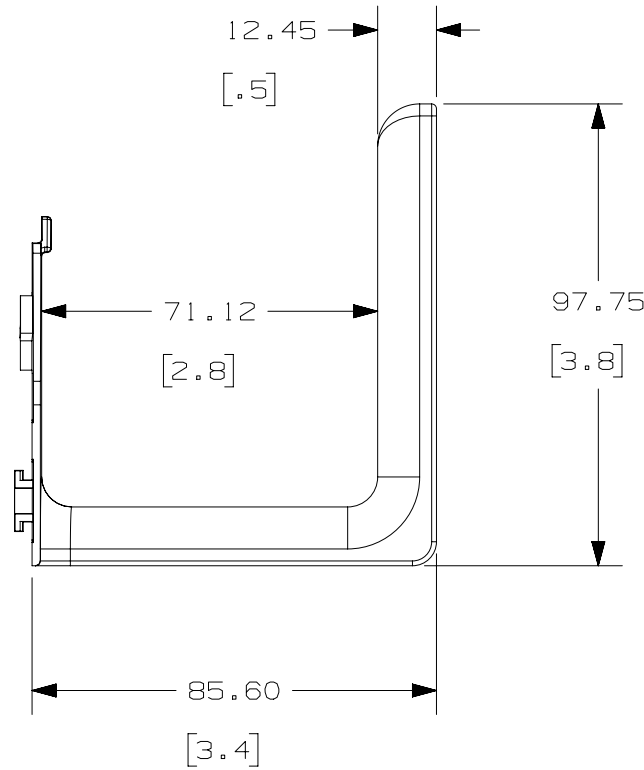
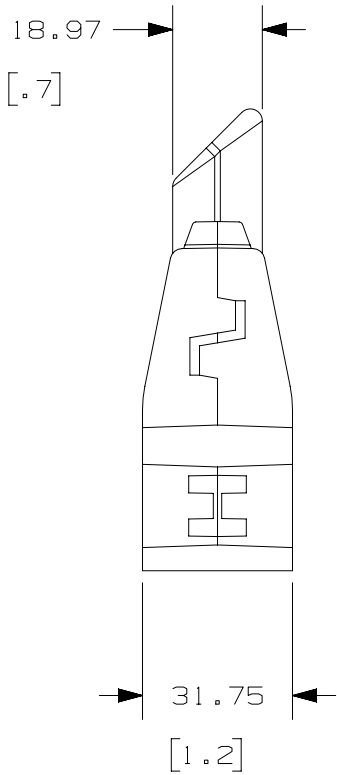


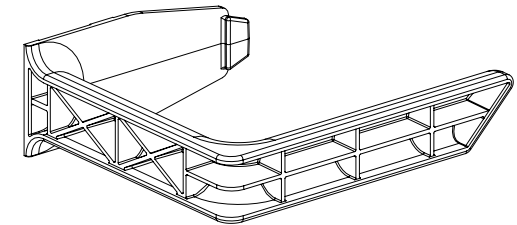
THIS COPY IS PROVIDED ON A RESTRICTED BASIS AND IS NOT TO BE USED IN ANY WAY DETRIMENTAL TO THE INTERESTS OF PANDUIT CORP.

PANDUIT P/N	WEIGHT
S2LR	181.44 Kg/EACH 0.40 LBS/EACH



NOTES:

- VISIT OUR ON-LINE CATALOG AT [WWW.PANDUIT.COM](http://WWW.PANDUIT.COM) FOR A LIST OF CURRENT PARTS APPLICABLE FOR USE WITH THIS PRODUCT.
- PRIMARY DIMENSIONS ARE IN MILLIMETERS (mm).
- PARTS SUPPLIED:  
(8) - 700mm L-RETAINER  
(1) - INSTRUCTION SHEET
- COMPATIBLE WITH S2BRK12 AND S2BRK6.



REV	DATE	BY	CHK	APR	DESCRIPTION	ECN
OOA	7-11-13	PBS	RCHA	JDWE	RELEASED TO PRODUCTION	12V343ZM-DC

TITLE <b>S2LR L-RETAINER KIT</b>		
CUSTOMER DRAWING		
ITEM REVISION NAME 12V343ZM/00.PRT		<b>PANDUIT</b> <sup>TM</sup>
DATASET FILE NAME 12V343ZM_DC/00A.PRT		
UNLESS OTHERWISE SPECIFIED, DIMENSIONAL TOLERANCES ARE:		MATERIAL/COLOR:
INCHES X.X +/- 0.03 X.XX +/- 0.018 X.XXX +/- 0.007	METRIC - MILLIMETER X. +/- 0.8 X.X +/- 0.46 X.XX +/- 0.18	ANGLE +/- 1°
THIRD ANGLE PROJECTION		DRAWING NUMBER: 12V343ZM-DC
DRAWN BY PBS	DATE 7-11-13	CHK RCHA
SCALE NONE		SIZE A

2

1

2

1