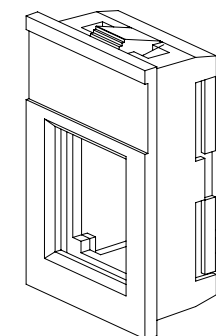
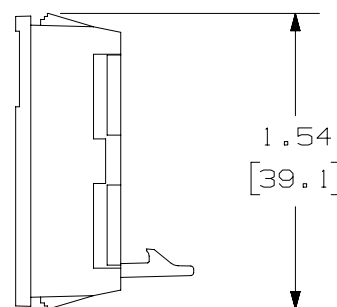
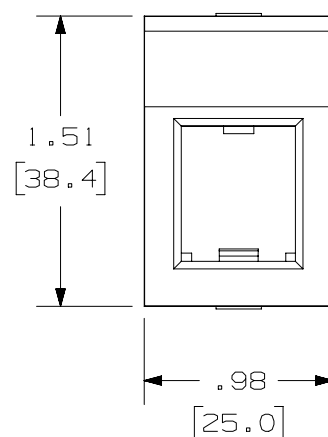
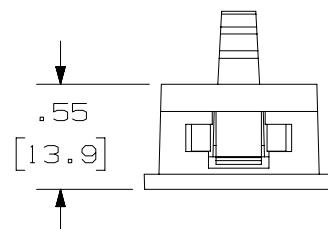


THIS COPY IS PROVIDED ON A RESTRICTED BASIS AND IS NOT TO BE USED IN ANY WAY DETRIMENTAL TO THE INTERESTS OF PANDUIT CORP.

PANDUIT P/N	WEIGHT
CM6C**-X	.113 LB/10 PCS (51.2 g/10 PCS)

NOTES:

1. SEE CURENT CATALOG FOR ADDITIONAL PART NUMBER SUFFIXES TO INDICATE COLOR AND OR PACKAGE QUANTITY.
2. SEE CATALOG FOR A COMPLETE LIST OF PARTS APPLICABLE FOR USE WITH THIS PART.
3. THIS PART IS USED TO SNAP INTO A STANDARD U.K. LJU6C (22.3mm X 36.9 mm) OPENING AND ACCEPTS ALL SINGLE POSITION MINI-COM MODULES.
4. DIMENSIONS IN [] ARE IN METRIC.



PART NUMBER		CM6C**-X	
TITLE			
MINI-COM 1 POSITION LJU6C NON-SHUTTERED ADAPTER			
CUSTOMER DRAWING			
ITEM REVISION NAME		M00024BA/01	
DATASET FILE NAME		M00024BA_DC/01D	
UNLESS OTHERWISE SPECIFIED, DIMENSIONAL TOLERANCES ARE: IN [mm]		PANDUIT MATERIAL: ABS	
.X ± .03 [.8] .XX ± .03 [.8] .XXX ± .010 [.3] ANGLES ±			
THIRD ANGLE PROJECTION		DRAWING NUMBER: 00024-03	
DRAWN BY	DATE	CHK	SCALE
RCA	5-22-97	CEF	NONE
SHT 1 OF 1			SIZE A

REV	DATE	BY	CHK	APR	DESCRIPTION	ECN
3	7-21-15	BJN	DCS	MMR	UPDATED DIMENSIONS	00024-03
2	5-1-14	JSP	REFR	MMR	REVISED AND REDRAWN, PREVIOUS REVISIONS HAVE BEEN OMITTED.	00024-03