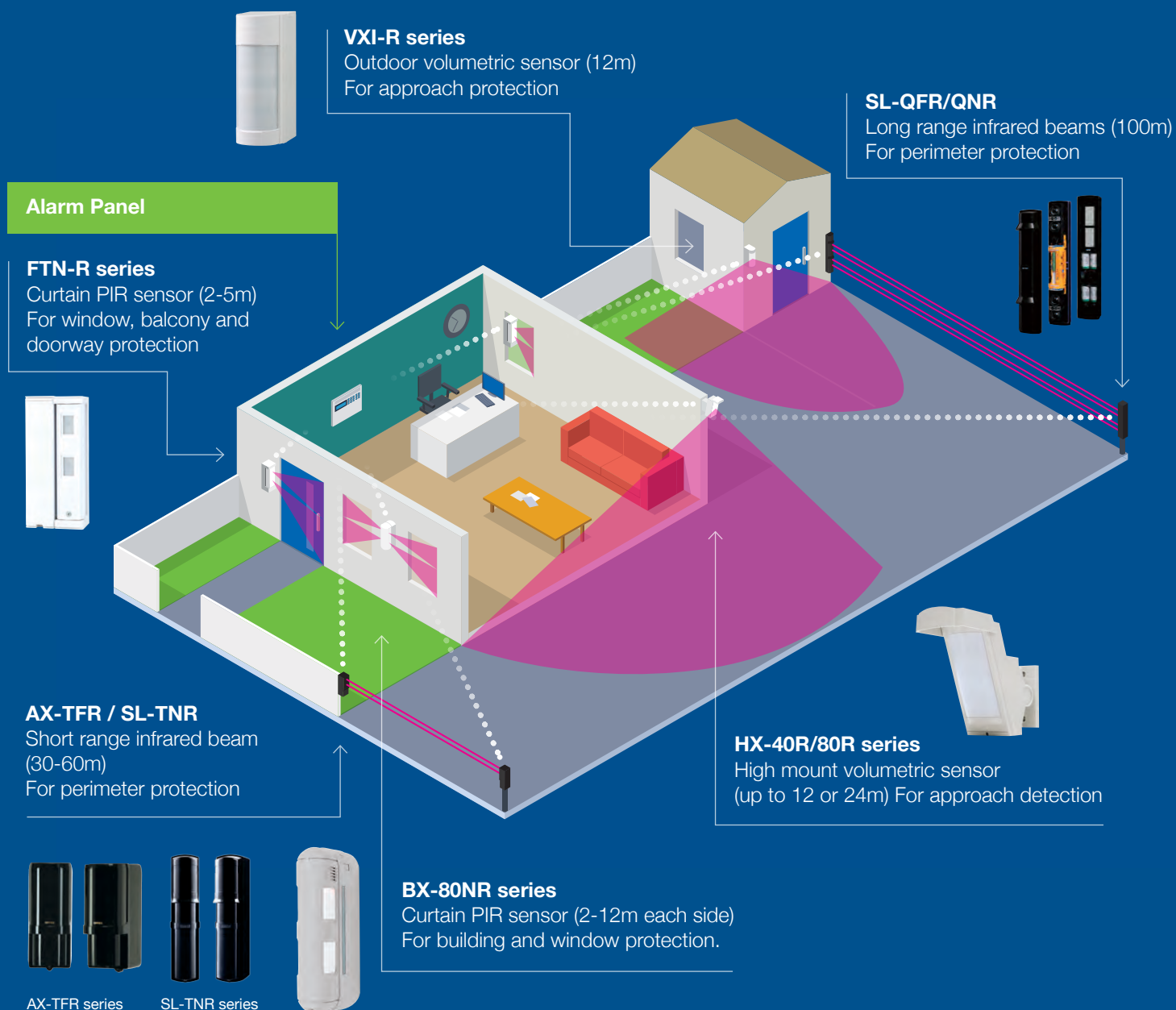


Combine OPTEX battery powered outdoor sensor with your preferred wireless alarm panel

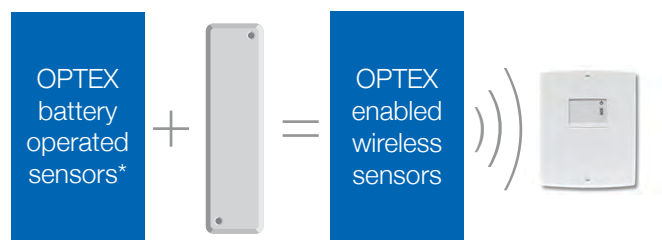
Create a seamless wireless security system by linking reliable outdoor detection with your alarm panel.



How to add OPTEX outdoor sensors to your wireless enabled alarm panel

To connect easily a battery powered OPTEX sensor to your wireless panel, the following steps should be followed:

- 1: Take one of your panel manufacturer's door contacts with 2 additional I/P.
- 2: Register the contact on the alarm panel.
- 3: Place the contact in the sensor's rear compartment (back box) and connect the alarm and tamper pair.
- 4: Power for the sensor can be driven off the transmitter's battery as the consumption of our sensors is very low. Use the spade connectors supplied with accessory pack, to connect the TX battery to the sensor.





*See the list of the compatible outdoor battery operated sensors below





OPTEX battery powered sensors overview

To protect residential and business premises, from the perimeter and garage to the front door and windows, you have the choice of a large range of OPTEX battery powered sensors. They are all designed to work in harsh environment conditions, ignore small animals and have an extremely low current consumption making your batteries last longer.

Battery powered active infrared beams (Two wireless door contacts or wireless transmitters are recommended by beam set)

Device signalling to the wireless module								
Sensors	Detection range	Channel selectable frequencies	Alarm	Low battery	Environmental output (DQ)	Tamper		
SL-100TNR	30m	–	●	●	–	●		
SL-200TNR	60m	–	●	●	–	●		
SL-350QFR	100m	●	●	●	●	●		
SL-350QNR	100m	–	●	●	●	●		
AX-100TFR	30m	●	●	●	●	●		
AX-200TFR	60m	●	●	●	●	●		
							AX series	SL series

Battery powered outdoor PIRs

Device signalling to the wireless module										
Sensors	Detection range	Type of detection	Combined PIR/ microwave	Small animal tolerance	Alarm	Low battery	Anti-masking	Tamper		
FTN-R	2-5m	Curtain	–	●	●	●	–	●		
FTN-RAM			–	●	●	●	●	●		
BX-80NR	1-12m on each side (24m max)	Curtain	–	●	●	●	–	●		
VXI-R	12m-90°	volumetric	–	●	●	●	–	●		
VXI-RAM	12m-90°	volumetric	–	●	●	●	●	●		
VXI-DRAM	12m-90°	volumetric	●	●	●	●	●	●		
HX-40RAM	12m-85°	Volumetric (high mount)	–	●	●	●	●	●		
HX-80NRAM	24m narrow	Curtain (high mount)	–	●	●	●	●	●		
									VXI series	HX series