

# Flat Panel Adjustable Height Ceiling Mount w/ 1.5 in. NPT Adapter

Model: **PRC, PRC-LA**

Weight Capacity: 50 lb / 22.7 kg.

## Features

- 1** Radial Glide™ allows 360° rotation and 15° of tilt for strategic placement of display
  - 2** Built-in cable management to hide cable clutter and prevent cable pinching
  - 3** PRC model extends display from 33 - 50 in. for perfect placement and viewing
- Compatible with VESA 75 x 75 mm, 100 x 100 mm, 200 x 100 mm and 200 x 200 mm mounting patterns

The PRC and PRC-LA Flat Panel Adjustable Height Ceiling Mounts are for displays up to 50 lb./22.7 kg. Radial Glide™ allows for 360° rotation and 15° of tilt for strategic placement of display for optimum viewing. Both PRC models offer built-in cable management for a clean, organized look which also prevents cable pinching. The PRC-LA includes the lower assembly only without the 1.5 in. NPT pipe, and the PRC model includes an additional pipe which extends displays between 33-50 in. from the ceiling.



Cable routing through extending pipe (and/or NPT Adapter) for a clean look



Radial Glide™ offers 15° of pivot adjustment in any direction



PRC-LA available as a basic option without an extension pipe

# Flat Panel Adjustable Height Ceiling Mount with 1.5 in. NPT Adapter

## PRC, PRC-LA

### Specifications

Color	Weight Capacity / Mount	Mounting Pattern	Total Weight Capacity
Black	50 lb.   22.7 kg	75 x 75 mm (Min) - 200 x 200 mm (Max)	50 lb.   22.7 kg
Width x Height x Depth		Weight	Warranty
PRC	8.88 x 35.86 - 52.86 x 3.49 in.   225 x 911 - 1343 x 89 mm	20.68 lb.   9.4 kg	Lifetime
PRC-LA	8.88 x 9.62 x 3.49 in.   225 x 244 x 89 mm	5.48 lb.   2.5 kg	Lifetime

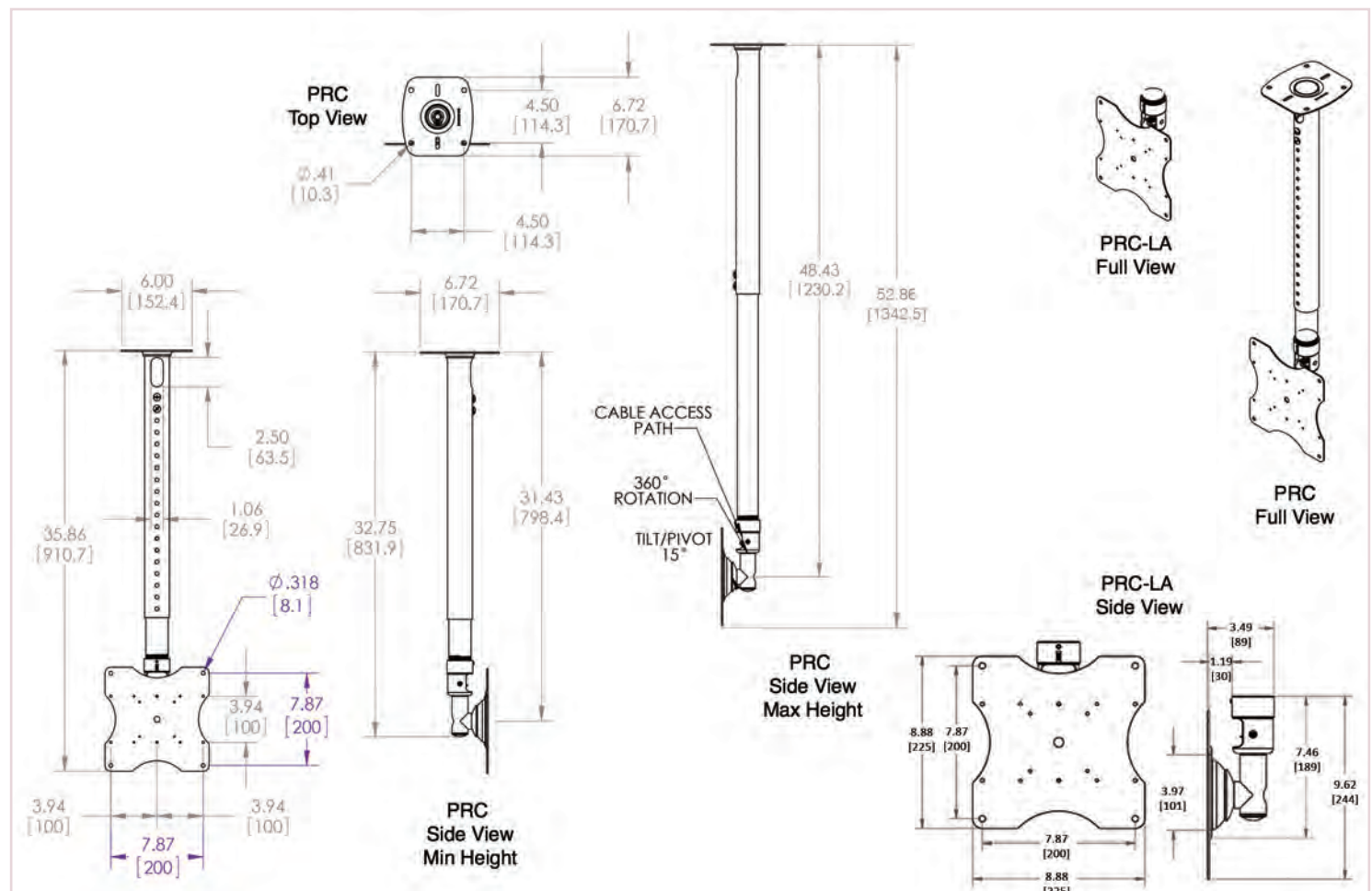
### Packaging

Width x Height x Depth	Contents
PRC 10.5 x 10.5 x 32.5 in.   267 x 267 x 826 mm PRC-LA 9.75 x 9.75 x 4.5 in.   248 x 248 x 114 mm	Both Include: PRC-LA Assembly (x1), UFP-280 Plate (x1), Hardware Pack (x1) PRC also includes: Tube with Welded Top Assembly (x1), Inner Tube (x1)

### Accessories

 <p>Plenum-Rated False Ceiling Equipment Storage <b>GB-AVSTOR5</b></p>	 <p>VESA Adapter Plate 200 x 100 or 100 x 200 <b>UFP-220</b></p>	 <p>Adjustable-Height Ceiling Adapter (24-46 inches) <b>AST-2446</b></p>
---	---	---

### Architectural Drawing



Specifications subject to change without notice

T: 800.368.9700 Int'l: +001.714.632.7100 | [www.mounts.com](http://www.mounts.com) | 1321 S. State College Blvd., Fullerton, CA 92831 USA



Visit [mounts.com](http://mounts.com) to see the complete line of AV solutions from Premier Mounts, including flat-panel mounts, projector mounts, carts/stands, and a full assortment of accessories.  
© 2015 Premier Mounts. All rights reserved.

Rev. 02-15-09