

# CABLEREADY.

## Protective Molding Raceway

[www.ppc-online.com](http://www.ppc-online.com)

# CABLE MOLDING CATALOG



# PPC

*Innovate. Connect.*

A BELDEN BRAND

CABLEREADY

# CABLEREADY'S

## PPC Belden Recognized Worldwide



PPC - A Belden Brand is a manufacturing company serving the security, cable TV, home entertainment, commercial and broadcast industries. PPC Belden is recognized worldwide

for our CableReady molding, PowerTronics power supplies, ProSNS™ Snap-N-Seal® compression connectors and Cable Pro compression tools. The tools and connectors utilize our patented 360° compression technology making them the most durable system on the market. Headquartered in East Syracuse, NY, USA, PPC Belden encompasses divisions such as Cable Pro, compression tools and accessories, CableReady, cable molding, ProSNS™ Snap-N-Seal® compression connectors and PowerTronics, power supplies. PPC Belden's CableReady cable molding and accessories are manufactured in the USA. This allows us to oversee the products from conception, to fabrication and lastly at inspection. We can assure our customers that they are receiving a quality made product built to last.

Visit [www.ppc-online.com](http://www.ppc-online.com) for detailed information on all PPC Belden products.



PPC Belden utilizes a proprietary roll form machine to produce exact sizes of cable molding.



The punch out machine creates custom formed accessories that include corners, tee fitting's and outlet boxes.

# Revolutionizing The Cable Molding Industry



CABLEREADY offers a series of protective molding developed to meet the needs of the ever-changing cabling industry.

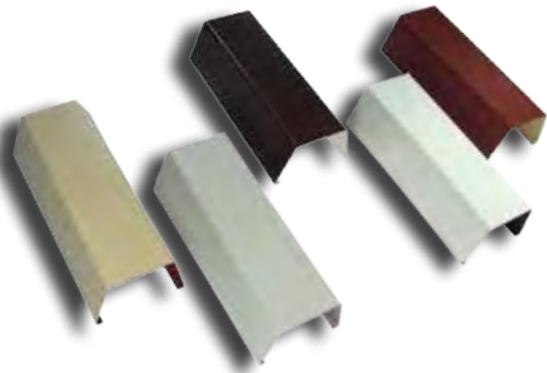
In response to industry demands and with many years of multi-unit construction experience, CABLEREADY designers were able to develop a protective molding raceway that not only meets but exceeds the cable industry's standards. CABLEREADY has since been an industry leader in developing the most innovative solutions to the challenges that installers must face when working with cable molding. CABLEREADY molding is available in straight run, transitions, right angles, Tee Fittings, and much more to ensure a professional solution to any installation.

Our molding is made of 26 gauge Galvalume® steel. Galvalume® lasts longer and is far more durable than G90 hot dipped steel or plastic molding systems. All products can be used for indoor and outdoor applications.

In the past, system operators, installers and apartment owners have settled for plastic moldings that were difficult to install, re-enter and re-install with an effective product life of only two to three years. Users have had to put up with plastic moldings that would crack, shift, discolor, warp and literally falloff the walls of buildings.

All products are guaranteed against cracking, warping, discoloring, blistering or peeling due to ultraviolet rays or harsh weather conditions for 15 years.

CableReady's unique molding holds these US patented numbers: 5,523,529, 5,732,747 and 6,437,247



# CABLEREADY'S

Molding Colors.....	5
Straight Run Molding.....	6
Molding Specifications.....	7
Cable Capacity.....	8
Straight Run Mounting Clips.....	9
High Security Full Backing Plates.....	10
1/2" Fittings.....	11-12
3/4" Fittings.....	13-14
1" Fittings.....	15-16
2" Fittings.....	17-18
Mounting Boxes.....	19
Tools.....	20-21
Anchors.....	22-24
Quick Installation Guide.....	25
Helpful Hints.....	26-27
Proprietary Process.....	28



CABLEREADY

PPC - A Belden Brand

6176 East Molloy Road

East Syracuse, NY 13057-1020

Tel: 1-800-800-5562

Email: [customerservice@ppc-online.com](mailto:customerservice@ppc-online.com)

[www.ppc-online.com](http://www.ppc-online.com)

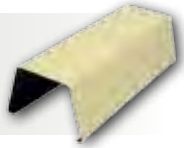
# CABLEREADY'S

## Molding Colors

BROWN



IVORY



WHITE



REDWOOD



LIGHT GRAY



## ORDERING GUIDE

\*Use two letter suffix to designate color when ordering:

<b>IV</b>	Ivory	<b>BR</b>	Brown
<b>RW</b>	Redwood	<b>LG</b>	Light Gray
<b>WH</b>	White		

Example: **SR050WH** = 1/2" x 8' White Molding

# CABLEREADY'S

## FEATURES:

- All molding is available in five colors and four sizes
- We offer transitions between sizes
- Can be applied for interior or exterior use
- Greater cable capacity
- 15 year warranty!



**1/2" x 8' Molding**  
**Part #SR050\***  
**480 ft./box**



**3/4" x 8' Molding**  
**Part #SR075\***  
**160 ft./box**



**1" x 8' Molding**  
**Part #SR100\***  
**80 ft./box**



**2" x 8' Molding**  
**Part #SR200\***  
**96 ft./box**

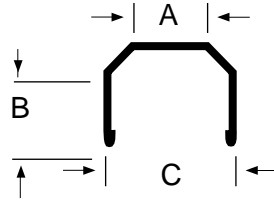
- Straight Run must be ordered by box quantity

## ORDERING GUIDE

\*Use two letter suffix to designate color when ordering:

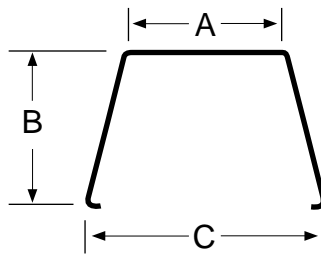
<b>IV</b>	Ivory	<b>BR</b>	Brown
<b>RW</b>	Redwood	<b>LG</b>	Light Gray
<b>WH</b>	White		

Example: **SR050WH** = 1/2" x 8' White Molding



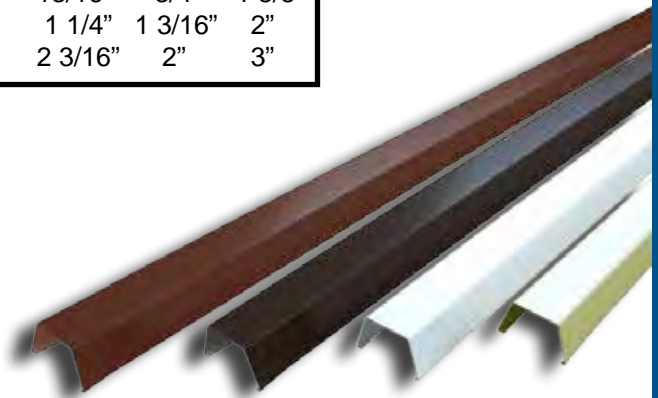
### 1/2" MOLDING

Part No.	A	B	C
SR050	7/16"	3/8"	5/8"



### 3/4", 1", 2" MOLDING

Part No.	A	B	C
SR075	13/16"	3/4"	1 3/8"
SR100	1 1/4"	1 3/16"	2"
SR200	2 3/16"	2"	3"



# CABLEREADY'S

**SR050**  
**2 RG-6's**



**SR075**  
**4-6 RG-6's**



**SR100**  
**14-16 RG-6's**



**SR200**  
**40 RG-6's**



Part No.	Cable Capacity	Footage Per Box	Shipping Weight Per Box
SR050	2 RG-6's	480'	55 lbs.
SR075	4-6 RG-6's	160'	28 lbs.
SR100	14-16 RG-6's	80'	22 lbs.
SR200	40 RG-6's	96'	40 lbs.

- Molding cable capacities are approximations using 60% braided RG6 cable



# STRAIGHT RUN

## Standard Mounting Clips

**Application:** Mounting clips are attached to the surface every 4', all cables or wires are then tie wrapped to the clip and secured.



**1/2" CLIP**  
Part #CL050



**3/4" CLIP**  
Part #CL075



**1" CLIP**  
Part #CL100



**2" CLIP**  
Part #CL200

An easy formula for determining the number of clips needed is to multiply the footage of straight run by .25 for each size ordered.

**Example:** 4000' of SR100IV x .25 = 1000 CL100

# CABLEREADY'S

**Application:** Used in areas where high security is required or when surfaces are uneven or unsupported. The full backing plate provides the ultimate in security for wires. Backing plates are ordered in the same lengths and quantities as straight run.



## 3/4" X 8' SECURITY CLIP

Part #BP075GS

240 ft./box



## 1" X 8' SECURITY CLIP

Part #BP100GS

192 ft./box



## 2" X 8' SECURITY CLIP

Part #BP200GS

128 ft./box

- Backing Plate must be ordered in box quantity

## HELPFUL HINTS

All molding and fittings are shipped with a blue protective film. It is recommended that the film remains on the product until the molding is installed on the clips. Note: Fittings should have the film removed prior to installation.

## 1/2" Fittings

*CABLEREADY molding is made of 26 gauge Galvalume® steel, which lasts longer and is more durable than G90 hot dipped steel or plastic molding systems.*



### **1/2" COUPLING FITTING**

**Part #CO050\***

Covers seam when two pieces of molding are joined together.



### **1/2" OUTSIDE CORNER**

**Part #OC050\***

Makes a 90° outside turn around corners involving two outside walls.



### **1/2" 90° RIGHT ANGLE**

**Part #RA050\***

Makes a left or right turn at a 90° angle on flat surface.



### **1/2" TEE FITTING**

**Part #TE050\***

Allows molding to split into three different directions at 90° angles.

- Most 1/2" fittings mount directly onto the CL050 clip.

# CABLEREADY'S



## **1/2" END CAP FITTING**

**Part #EC050\***

Covers end piece of molding.

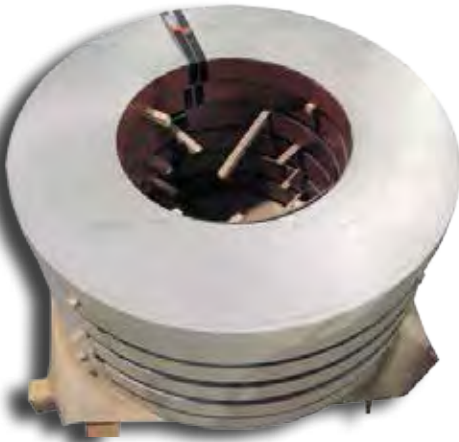


## **1/2" INSIDE CORNER**

**Part #IC050\***

Makes a 90° inside turn in a corner.  
(i.e. a wall to wall or ceiling to wall)

The 26 gauge Galvalume® steel is delivered to PPC Belden in spools. This specialized sheet metal is then taken to the roll form machine where it is formed into cable molding.



## 3/4" Fittings

*CABLEREADY molding is manufactured in the United States. This gives us the ability to customize our molding to match the special requirements of your installation.*



### **1" X 3/4" REDUCING FITTING** **Part #RD175\***

Reduces molding size from 1" to 3/4" in a straight run of molding.



### **3/4" COUPLING FITTING** **Part #CT075\***

Covers seam when two pieces of molding are joined together.



### **3/4" OUTSIDE CORNER** **Part #OC075\***

Makes a 90° outside turn around corners involving two outside walls.



### **3/4" 90° RIGHT ANGLE** **Part #RA075\***

Makes a left or right turn at a 90° angle on flat surface.

## HELPFUL HINTS

When installing the molding on an uneven surface, the clips should be installed on the high points as close to the 48" centers as possible.

# CABLEREADY'S



## **3/4" TEE FITTING**

**Part #CT075\***

Allows molding to split into three different directions at 90° angles.



## **3/4" END CAP FITTING**

**Part #EC075\***

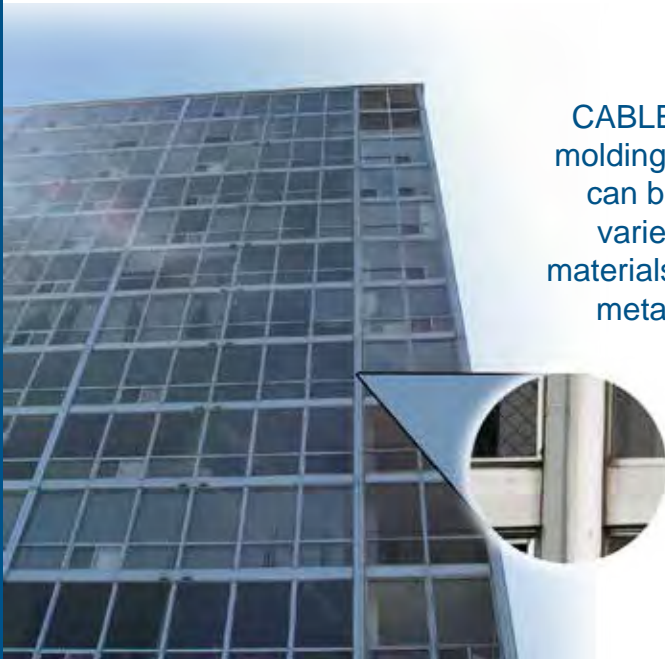
Covers end piece of molding and/or as a reducer from 3/4" to 1/2" molding size.



## **3/4" INSIDE CORNER**

**Part #IC075\***

Makes a 90° inside turn in a corner such as a wall to wall or ceiling to wall.



CABLEREADY cable molding is versatile and can be applied to a variety of building materials including brick, metal and stucco.

# 1" Fittings

*All CableReady molding is long lasting and carries a 15 year warranty against cracking, warping, discoloring, blistering or peeling due to ultraviolet rays or harsh weather conditions.*



## **1" COUPLING FITTING**

**Part #CO100\***

Covers seam when two pieces of molding are joined together.



## **1" OUTSIDE CORNER**

**Part #OC100\***

Makes a 90° outside turn around corners involving two outside walls.



## **1" 90° RIGHT ANGLE**

**Part #RA100\***

Makes a left or right turn at a 90° angle on flat surface.



## **1" TEE FITTING**

**Part #TE100\***

Allows molding to split into three different directions at 90° angles.



## **1" END CAP FITTING**

**Part #EC100\***

Covers end piece of molding. Note: EC100 must be cut in the field to make end cap.



## **1" INSIDE CORNER**

**Part #IC100\***

Makes a 90° inside turn in a corner such as a wall to wall or ceiling to wall.

# CABLEREADY'S



## **1" x 3/4" REDUCING FITTING**

**Part #RD175\***

Reduces molding size from 1" to 3/4" in a straight run of molding.



## **1" CROSSING TEE**

**Part #CT100\***

Allows molding to split into three different directions at 90° angles.



## **1" EXPANSION BOOT**

**Part #BO100\***

Creates an expansion to cover the hole when entering a lock box, ceiling, or floor.



## **1" OFFSET ADAPTER**

**Part #OA1-58\***

Allows for a step up or step down from a trim board. Standard offset is 5/8".

Fitting can be trimmed.



## **1" BELL ADAPTER**

**Part #BO300\***

Covers up to a 2 1/2" hole at the bottom of the bell adapter. Top of bell adapter fits the SR100 Straight Run.





## 2" Fittings

*Easy of installation of an 8' section of molding requires 8 anchors, 4 clips, and only 3 minutes to install!*



### **2" COUPLING FITTING**

**Part #CO200\***

Covers seam when two pieces of molding are joined together. Improved with metal insert to be more secure. See note.\*



### **2" OUTSIDE CORNER**

**Part #OC200\***

Makes a 90° outside turn around corners involving two outside walls.



### **2" 90° RIGHT ANGLE**

**Part #RA200\***

Makes a left or right turn at a 90° angle on flat surface. Is a two piece fitting, RA200 snaps onto a right angle clip.



### **2" END CAP FITTING**

**Part #EC200\***

Covers end piece of straight run molding.  
Note: EC200 must be cut in the field to make end cap.



### **2" INSIDE CORNER**

**Part #IC200\***

Makes a 90° inside turn in a corner such as a wall to wall or ceiling to wall.



### **2" x 1" REDUCING FITTING**

**Part #RD201\***

Reduces molding size from 2" to 1" in a straight run of molding.

# CABLEREADY'S



## **2" CROSSING TEE** **Part #CT200\***

Branches off in four different directions at 90° angles.



## **2" EXPANSION BOOT** **Part #BO200\***

Creates an expansion to cover the hole when entering a lock box, ceiling or floor.



## **2" OFFSET ADAPTER** **Part #OA2-58\***

Allows for a step up or step down from a trim board. Standard offset is 5/8". Fitting can be trimmed.



## **2" x 2" x 1" REDUCING TEE** **Part #RT221\***

Reduces from 2" to 1" at a 90° angle to the 2" molding.



## **2" BELL ADAPTER** **Part #BO600\***

Covers up to a 4 1/2" hole at bottom of bell adapter. The top of bell adapter fits our SR200 Straight Run.



## **2" TEE FITTING** **Part #TE200\***

Allows molding to split into three different directions at 90° angles.

**\*Note:** The new CO200 design requires that you install the coupling at the same time as the straight run molding. The interlocking bracket on the CO200 must fit securely between the two lengths of straight run.

# Outlet Boxes

*Standard boxes have 1/2" and 3/4" knockouts.*



3" x 4 3/4" x 1 5/8"  
**SINGLE GANG OUTLET BOX**  
Part # X OB3-4\*  
Used to terminate a drop.



5" x 4 3/4" x 2 3/4"  
**DOUBLE GANG OUTLET BOX**  
Part # X OB34DGEX\*  
Used to terminate a drop.



3" x 4 3/4" x 2 3/4"  
**SINGLE GANG OUTLET BOX - DEEP**  
Part # X OB3-4 SD\*  
Used to terminate a drop.



2 3/4" x 2 3/4" x 1"  
**JUNCTION BOX**  
Part # X JB275-BR  
Terminate a drop.

# CABLEREADY'S

*Recommended tools for CableReady Installations.*



## **SHEET METAL SHEAR** **Part #X HC1251**

Cuts straight run molding to desired length.



## **SUPER SNIP SHEAR** **Part #X HC1451**

Cuts specialty corners or notches in straight run molding and to cut straight run length.



## **SHEAR HANDLE SPRING REPLACEMENT** **Part #X RS2531**

Shear Handle Spring Replacement



## **SHEAR BLADE REPLACEMENT** **Part #X RB2511**

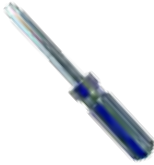
Shear Blade Replacement



## **REPLACEMENT SCREW KIT** **Part #X 4532**

Replacement Screw Kit

***Note: Replacement Spring, Blade and Screw Kit are the same for both X HC1251 and X HC1451***



## **ANCHOR DRIVER**

**Part # X CR-7TD**

Drives nail-in anchors into the 1/2" clip.



## **1/2" ENTRY KEY**

**Part # X EK050HD**

Allows user to re-enter 1/2" molding after the molding has been installed.



## **ENTRY KEY**

**Part # X EK100HD**

Allows user to re-enter 3/4", 1" and 2" molding after the molding has been installed.



## **HELPFUL HINTS**

When installing vertical risers, it is recommended that all short pieces be placed at the top of the riser. A full piece of molding should be at ground level for added security.

# CABLEREADY'S

**NYLON NAIL-IN ANCHORS** - For light duty fastening in masonry, brick, block or concrete. The head of the nail is slotted so the anchor can be removed with a screwdriver. Meets and exceeds GSA Specifications FF-325, Group V, Type 2, Class 4. Use a hammer to insert the Nylon Nail-In Anchors\*.

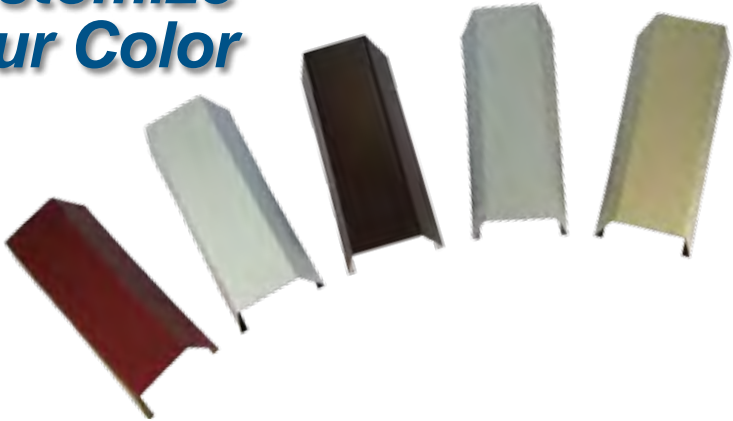
\*When using a hammer to insert anchors into the wall surface be careful not to hammer the sides of the clips, since bending the clips out of shape will make removal of the molding very difficult.



## NYLON NAIL-IN ANCHORS

Part #	X4630	X4730	X5630	X5730
Anchor Size	3/16" x 1"	3/16" x 1 1/2"	1/4" x 1"	1/4" x 1 1/2"
Hole Size	3/16"	3/16"	1/4"	1/4"
Pull Out Strength	250 lbs.	295 lbs.	235 lbs.	290 lbs.
Shear Strength	530 lbs.	680 lbs.	790 lbs.	830 lbs.
Minimum Qty.	100	100	100	100
Bulk Pkg. Qty.	2,000	2,000	2,000	2,000

**Customize  
Your Color**



**SLEEVE ANCHORS** - For heavy duty fastening in masonry, brick, block or concrete. Meets and exceeds GSA Specifications FF-S-325, Group II, Type 3, Class 3. The test values listed were obtained using 3500 psi concrete (no aggregate). A safe working load should not exceed 25% of stated values.



## SLEEVE ANCHORS

Part #	X1712	X1713
Anchor Size	3/8" x 1 7/8"	3/16" x 3"
Hole Size	3/8"	3/8"
Pull Out Strength	2700 lbs.	2700 lbs.
Shear Strength	2280 lbs.	2280 lbs.
Minimum Qty.	50	50

**PLASTIC ANCHORS** - For light duty fastening in masonry, brick, block, concrete or drywall. When using Plastic Anchors holes must be drilled into the wall surface prior to installation. Use Hex Head Screws to anchor clip to wall surface.



## PLASTIC ANCHORS

Part #	X8460
Anchor Size	1/4" x 1"
Screw Size	10
Hole Size	1/4"
Minimum Qty.	100
Bulk Pkg. Qty.	2000

# CABLEREADY'S



## HEX HEAD SCREWS

Part #	X #8 HH	X #10 HH
Screw Size	#8 x 1	#10 x 1
Minimum Qty.	100	100
Bulk Pkg. Qty.	2000	2000 lbs.

**WALLGRABBERS** - For light duty fastening in drywall and plaster. No drilling is required. Drive in with hammer and insert a #8 Hex Head Screw to anchor clip to wall surface.



## WALLGRABBERS

Part #	X #8 WG
Anchor Size	#8
Screw Size	#8 x 1
Minimum Qty.	100
Bulk Pkg. Qty.	2000

CABLEREADY molding is made of 26 gauge Galvalume® steel, which lasts longer and is more durable than G90 hot dipped steel or plastic molding systems.



# CABLEREADY Installation

## DRILL



## ATTACH CLIP



## ATTACH CABLE



## SNAP ON MOLDING



## RE-ENTRY



### PREPARATION:

- Identify the least obstructive area on the wall to place the molding. Snap chalkline at 2" from any edging.
- Only two clips are needed per 8' section of molding. Starting from the ground up.

### DRILL:

- Center the clip at 4' mark, and mark the surface where you will drill the holes.
- Align the clip's end guides with the chalkline.
- Use anchors slightly smaller than the holes to provide for adjustments since the drill bit tends to "walk" on the brick and metal.

### ATTACH CLIP:

- Use two anchors to attach each clip.
- The type of wall surface the clip is attached to will determine how the anchors are inserted.\*
- As the anchor is being placed, continue to check the alignment of the clip end guides with the chalkline.

### ATTACH CABLE:

- After the clips have been installed, use a tie wrap to secure the clip. (only one tie wrap per clip is needed)

### SNAP ON MOLDING:

- When snapping the molding on, start from one end and work toward the other.
- Leave a slight space between each section of molding for expansion.

### RE-ENTRY:

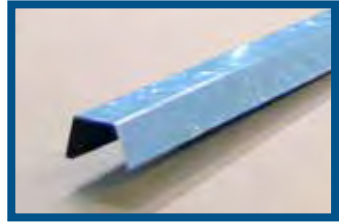
- CABLEREADY molding requires a special tool to re-enter the molding. The molding and tools are designed specifically to keep vandals out of the system.
- The Entry Key slips under the molding grabbing the flange of the molding and pulling it away from the edge of the clip.

\*For detailed instructions on installing CABLEREADY molding please refer to the CABLEREADY Installation Instruction Guide.

\*\*When hammering anchors to secure the clips, be careful not to hammer the sides of the clips, since bending the clips out of shape will make removal of molding very difficult.

# CABLEREADY'S

All moldings and fittings are shipped with a blue protective film that is laminated to the product. This film protects the molding as it is being installed. It is recommended that the strippable film be left in place until the molding is installed on the clips. Remove the film by starting at one end of the molding and pulling it off over the entire length of molding. Unlike the molding, the fittings should have the film removed before installation. Some fittings slide into the molding making it very difficult to remove the film after installation.



**HELPFUL HINT #2:** The fittings are designed to either snap over the molding or slip into the end of the molding, depending on the fitting. A clip is not required to hold fittings in place on the 3/4", 1", and 2" molding. The majority of the fittings are snap over fittings. The snap over fittings are easy to identify because they have a set of tabs on the bottom.

The other fittings are inserted into the end of the piece of molding, and have small notches on each side where the molding fits. Most 1/2" fittings snap directly onto a CLO50 clip.

**HELPFUL HINT #3:** When installing vertical risers, it is recommended that all short pieces be placed at the top of the riser. A full piece of molding should be at ground level. This will help prevent vandals from trying to remove and damage a piece of molding. If a vertical riser does not rest on the ground, on a trim board, offset, or any place that will support the weight of the riser, it is recommended that an anchor or screw be placed at the bottom piece of molding to support the riser. Due to the design of the molding, natural expansion and contraction will cause the riser to slide downward over a long period of



# CABLEREADY Installation

time. This will create gaps between the pieces of molding unless the support is in place.

**HELPFUL HINT #4:** When installing the molding on an uneven surface, the clips should be installed on the high points as close to the 48" centers as possible. Another option is to install the full backing plate. The full backing plate can be used in conjunction with the standard clips. You can alternate between the two different types if necessary.



**NOTE:** The CO200 design requires that you install the coupling at the same time as the straight run molding. The interlocking bracket on the CO200 must fit securely between the two lengths of straight run.

## Looking For An Easy Way To Pull Your Cable?

PPC Cable Caddie's Make Cable Installations A Breeze

- Made in the USA from high quality, lightweight 3/4" steel tubing.
- Unique folding mechanism allows cable caddie to be folded easily for transport.
- Enduring paint finish protects caddie from weathering elements.
- The CC2016B holds one 20" x 16" reel.
- Available with 6" wheels.



**CC2016B**

To see all PPC's cable caddies go to [www.ppc-online.com](http://www.ppc-online.com).

# CABLEREADY'S

**P**PC - A Belden Brand's CABLEREADY molding is manufactured in Washington, PA, USA. PPC uses 26 gauge Galvalume® steel which can withstand harsh weather conditions and continue to last for many years. This allows PPC to provide an extended guarantee on all CABLEREADY cable molding products for a full 15 years. Our CABLEREADY molding is more durable, outlasting G90 hot dipped steel or plastic molding systems.

The Galvalume® steel is delivered in large spools. The sheet metal is formed into the cable molding based on preordered custom sizes by a proprietary roll form machine. This all-in-one machine molds the metal and places a thin protective strip of blue film onto the shaped molding, which is later removed by the professional installer after the molding has been installed.

The punch out machine is used to create custom molded accessories that include right angles, Tee Fittings, outlet boxes, transitions and much more.







*Innovate. Connect.*

A BELDEN BRAND

**PPC - A Belden Brand**  
6176 East Molloy Road  
East Syracuse, NY 13057-1020

CAT-CR14

