

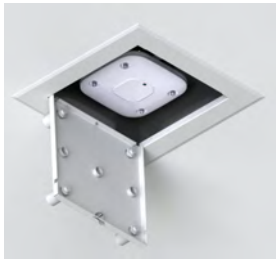


## Model 1051-CCOAP Recessed Ceiling/Wall WAP Mount- Cisco WAPs

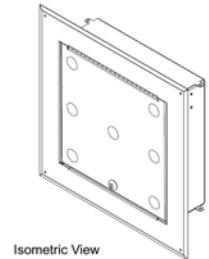
Category: Wall and Hard Ceiling - Recess Mount



Locking hard lid ceiling or wall mount enclosure is designed for wireless APs and DAS remote units with detachable antennas. This aesthetic, white powder-coated steel enclosure has an 17.5" square bezel which fastens into the wall and simplifies access point moves, adds, and changes. The -00 model has openings in the door to mount up to seven external antennas. Interchangeable retrofit doors allow current owners to upgrade to new WAP or antenna solutions from different vendors by swapping doors.



Firestop Grommet



Isometric View

### Features & Benefits

- Recessed, hard lid ceiling or wall enclosure for securing wireless access points and DAS remotes with detachable antennas
- Universal T-bar mounting bracket allows easy installation of most vendors' WAPs
- Fully-hinged locking door, keyed alike
- Interchangeable doors permit simple migration to new WAPs and antennas
- Enclosure back-box is effective dust barrier to simplify ICRA procedure compliance

### Technical Specifications

- Back-box is 16 ga. galvanized steel; door and flange are textured, white powder-coated steel
- Size: Flange is 17.5" x 17.5", back-box is 12.5" x 12.5" x 4.5" deep
- Maximum weight to be installed inside the unit is 25 lbs.
- Enclosure is flush-mounted in ceiling or wall, enclosure flange must be anchored to ceiling or wall using appropriate hardware

### Standards for Safety

- UL 50 listed, TYPE 1, for indoor use only
- UL Listed and designed to meet National Electric Code Paragraphs 300-22 and 300-23 for installation in the above-ceiling space
- USL - Investigated using requirements contained in Standard UL 50 - Twelfth Edition, and UL 50E - First Edition
- CNL - Investigated using requirements contained in Canadian Standard CSA/C22.2 No. 94.1 and 94.2
- UL 2416, Audio/Video, Information and Communication Technology Equipment Cabinet, Enclosure & Rack Systems
- CSA C22.2 NO. 60950-1-07 + Amd. 1 Amd. 2 Information Technology Equipment -- Safety. Part 1, General Requirements
- OSHPD Approval OPM-110-13

## Configurations

Model Number	Description & Compatibility
1051-00	Recessed Ceiling/Wall WAP Mount- External antennas
1051-AP225	Recessed Ceiling/Wall WAP Mount- Aruba WAPs
1051-CCOAP	Recessed Ceiling/Wall WAP Mount- Cisco WAPs
1051-WA	Recessed Ceiling/Wall WAP Mount- ABS door dome

## Measurements *(Maximum values):*

- Height: 17.5 in
- Width: 17.5 in
- Depth: 4.5 in.
- Item Weight: 16 lbs.
- Shipping Weight: 17 lbs.

## Includes


- (1) Unit per carton
- (1) Internal universal WAP mounting T-bar bracket
- (4) Hanger wires
- (1) Cable egress firestop Kit (1" trade size conduit connector, and firestop grommet)
- (2) Keys for lock
- (4) White cosmetic screw caps and (4) #10 ceiling/wall attachment screws
- Installation instructions
- Shipping weight: 17 lbs.

## Available Accessories

Mounting Plate:

- P/N 34-ZDUAL-RPSMA- color matched dual band omni antenna with 18" pigtail and RPSMA connector
- P/N 34-ZDUAL-RPTNC - color matched dual band omni antenna with 18" pigtail and RPTNC connector
- P/N 34-BMANT24- 2.4 GHz color matched omni antenna with 12" pigtail and RPTNC connector
- P/N 34-BMANT5- 5 GHz band color matched omni antenna with 12" pigtail and RPTNC connector
- P/N 34-PATCH-RPTNCM- 2.4 GHz, 8 dB gain, directional antenna with 8" pigtail and RPTNC connector
- P/N 34-MULTI-CARRIER - multi-band, multi carrier 700 MHz/Cellular/PCS/Wi-Fi ceiling mounted antenna
- P/N 35-BLKHD-KIT-RPTNC - 18" jumper cable with RPTNC connectors on both ends, bulkhead connector and plastic ring fitting into ¾" trade knockout; for mounting external antennas
- P/N 35-BLKHD-KIT-RPSMA - 18" jumper cable with RPSMA connectors on both ends, bulkhead connector and plastic ring fitting into ¾" trade knockout; for mounting external antennas
- P/N 1790 - PoE interlock- disconnects power and notifies when enclosure door has been opened

## Documentation Links

 [Spec Sheet](http://oberoninc.com/index.php?option=com_content&view=article&id=2229&Itemid=399) - oberoninc.com/index.php?option=com\_content&view=article&id=2229&Itemid=399

 [Installation Instructions](http://oberoninc.com/images/WebDocs/Model1051-00_Installation_Instructions.pdf) - oberoninc.com/images/WebDocs/Model1051-00\_Installation\_Instructions.pdf

 [Customer Prints](http://oberoninc.com/images/WebDocs/Model1051-00_Customer_Print.pdf) - oberoninc.com/images/WebDocs/Model1051-00\_Customer\_Print.pdf

 [SECTION 27\\_21\\_33 DATA COMMUNICATIONS WIRELESS ACCESS POINTS](http://oberoninc.com/images/WebDocs/SECTION 27_21_33 DATA COMMUNICATIONS WIRELESS ACCESS POINTS.pdf) -

[http://oberoninc.com/images/WebDocs/SECTION 27\\_21\\_33 DATA COMMUNICATIONS WIRELESS ACCESS POINTS.pdf](http://oberoninc.com/images/WebDocs/SECTION 27_21_33 DATA COMMUNICATIONS WIRELESS ACCESS POINTS.pdf)

*Images and documents may depict similar models in the product series.*

Dimensional Images

