

# March Networks Command:

Unparalleled scalability  
and ease-of-use in  
an open IP video  
management platform







**EVERAGING** the investment your business has made in security, surveillance, and facilities management can be an intimidating undertaking. Choosing the right set of tools to help you integrate, implement and manage these resources is a critical first step.

March Networks Command™ intelligent video management solution provides a single, **web-based interface** for managing your video surveillance infrastructure, and you don't have to change a thing. Your hardware platform. Your browser. Your operating system. Your data base. Your business applications.

You have an important decision to make.

# Features that users can count on

Command's award-winning feature set provides users with the tools and solutions they need—not just to manage their organization's video, audio and data—but to leverage that information to improve the way their organization runs. We've integrated all the features Command users can count on to make their jobs easier and more intuitive.

**WEB-BASED INTERFACE** A cross-platform, browser-based user interface that's focused on each individual user's tasks means the Command GUI is familiar and customized for frequent users. Up to 36 live and archive streams per screen add to the flexibility of the interface, and allow users to optimize the variety of information available for monitoring and reviewing.

**THIRD-PARTY INTEGRATION** Use Command to maximize the benefits of other security and surveillance systems you use on a daily basis, such as access control, mass notification, incident management, and license plate recognition systems.

**VIDEO MONITORING** A host of surveillance and monitoring tools help users have more control over their security responsibilities.

- PTZ control, including automatic presets and guard tours
- Advanced and intelligent alarm/recording capabilities (e.g., motion detection, motion tracking, pre-determined schedules, etc.)
- Thumbnail search on archive
- Visual Finder technology
- Synchronized audio and video playback and export that's location independent
- Graphical video timeline during playback
- Save and print snapshots
- Instant replay
- Standardized playback controls



# Command and Shadow Archive

Your video will always be available, even when your network isn't.

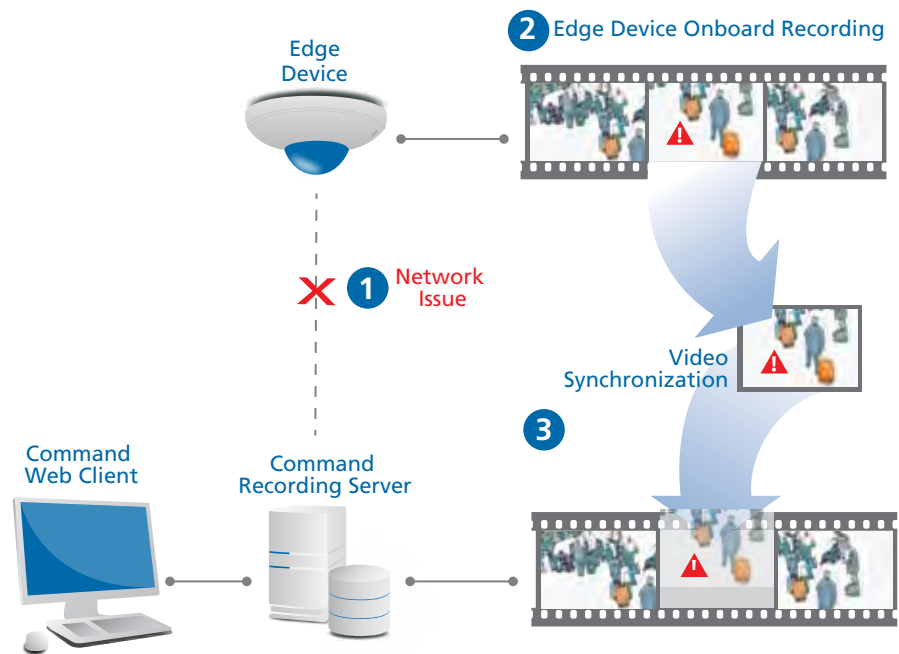
Command's innovative Shadow Archive™ feature allows for seamless access to recorded video for total fail-safe management.

Here's how it works.

**1** A network issue (e.g., a problematic switch or NIC card, loss of power, or even routine maintenance) causes the network to go down. Connection between the edge device and the recorder is lost.

**2** The network issue triggers the camera's internal recording, or recording on a NAS device. The camera is essentially functioning as a failover device.

**3** Once the network is restored, the "missing" archive (video and audio) is reintegrated back into the Command recording server—in the appropriate spot.



# Decision makers unite

There can be multiple decision makers involved in assessing your organization's video surveillance requirements. Security professionals, IT professionals, and facilities management professionals each have unique responsibilities and individual interests in mind when it comes to implementing effective video surveillance. To enable a seamless integration of existing and new technology solutions that will work in concert with your organization's current and future IT and surveillance infrastructure, multiple parties will likely be involved in evaluating the logistics that surround this decision.

We had your requirements in mind when we developed Command, the benefits of which will appeal to the system's users *and* its stakeholders.

- **Deploy and manage your complex video surveillance systems with ease** using the Command Enterprise Mass Management tool to push out configuration, firmware and device settings.
- **Reduce network bandwidth** with Command's server-to-server video gateway.
- **Choose the right device(s) for your organization's needs**—whether that is a hybrid network video recorder, cameras recording to a NAS, virtualized server environment, or software loaded on your organization's existing IT network.
- **Ensure that your video and audio are never lost** with Command's innovative Shadow Archiving feature, which allows cameras to act as failover devices.
- **Secure a path that will carry you forward** with Command's unified video management system platform.
- **Guarantee that your data is secure and easy to manage** with Command's centralized, distributed architecture.
- **Offer your Command users a world-class, familiar GUI** that is easy to use and works on your browser of preference—on both Mac OSX and Windows operating systems.
- **Save time on user setup** via LDAP/Active Directory Integration, which collects user account information (privilege levels, passwords, domains) directly from your organization's corporate network directory.
- **Realize the benefits of Command's server-to-server proxy**, which keeps your recording servers anonymous and secure, reduces bandwidth between LAN and WAN users, and speeds up access to remote video resources.
- **Utilize your database of preference**, thanks to Command's SQL database, which can accommodate the most widely used database languages.
- **Count on Command's ONVIF compliance** when integrating Command into a multi-vendor network environment.



## Command and VMware®

IT professionals know that a virtualization solution is a key component of any IT infrastructure, and VMware leads the pack in terms of its industry reputation and the functionality it provides. When a new application is deployed, one of the critical decision points is discerning the impact it will have on the server and desktop environments. If a new application requires dedicated server hardware, there will be cost implications, as well as potentially long lead times to acquire and install the systems. Command fits into a virtualized environment, allowing it to be managed much the same way as any other corporate application. It also supports multiple industry standard databases, allowing IT teams to avoid costly training and the acquisition of new databases. Command customers are able to ensure the optimum performance of their IP video networks—leaving them free to focus on their core business.

**vmware**  
PARTNER

TECHNOLOGY  
ALLIANCE





## Command and Mass Notification

A camera positioned at the entrance to a sports stadium detects a person breaching security, and automatically triggers an alarm on Command. A notification of this security breach is immediately communicated, and simultaneously all security guards receive a notification of the breach on their hand-held radios. The security operations center receives a notification by telephone, and video of the event is displayed on the video wall. All security employees receive a PC alert of the incident. And a conference call is automatically set up among key decision makers so they can determine how best to proceed. That's the power of Command used with intelligent mass notification.

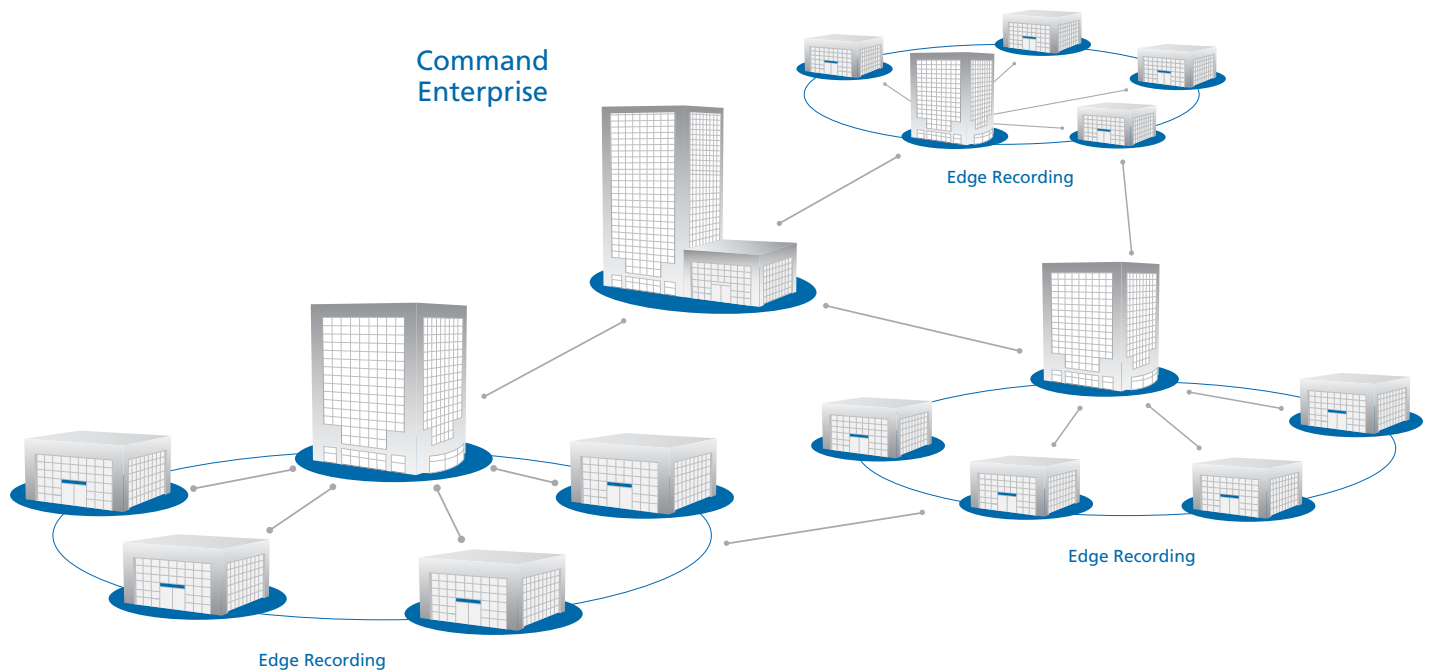


# Endless scalability. Distributed storage. Infinite video routing options.

Command offers the practical, yet vital, combination of centralized and local site administration.

The distributed video surveillance architecture allows multiple recorders/recording servers to operate independently, as well as be interconnected and incorporated into a Command Enterprise system. This enables organizations to scale their surveillance solution cost-effectively as their business grows or their needs change.

In addition, the distributed architecture substantially lowers overall risk by providing efficient upgrade paths and better options for validating/deploying new technologies and refreshing hardware without taking down the whole infrastructure.



# Here's how it comes together

To accommodate different server environments, Command is available in three versions, each with the same powerful feature set, the same user interface, and the ability to scale as your organization grows.

## Command Lite

- For small businesses with limited camera and storage requirements
- For March Networks certified providers that want to test and demonstrate the Command software
- Available free of charge from the March Networks website

## Command Professional

- For single-server environments
- Up to 128 cameras
- Can be seamlessly integrated into a Command Enterprise solution should your organization outgrow 128 cameras

## Command Enterprise

- For multiple-server environments
- Up to 128,000 cameras
- Enterprise-class features, such as centralized user authentication, device mass configuration and firmware management, that are critical to the success of large organizations
- Existing hybrid recording can also be incorporated into the Command Enterprise architecture

## Command and Access Control

A "door forced" incident automatically triggers an alarm which appears in the operator's alert lists, and the camera at the scene is recording. That video is pushed to end users and pops up in their access control interface or on a video wall, allowing them to better assess the situation and respond accordingly. That information can also be shared among multiple users at different sites, and exported for future use. High-quality video linked with access control systems provides proof-positive documentation for a facility's human and vehicular entry points.



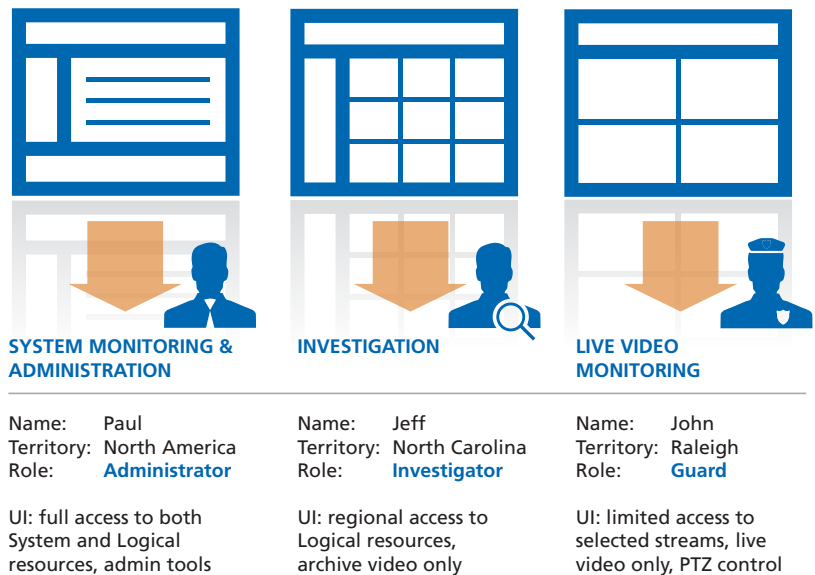
# Powerful and easy-to-use are not mutually exclusive

Command provides users with all the GUI they need, and none of the GUI they don't need. This world-class, sophisticated user interface is easy to use and works on your browser of preference, with any Mac OSX or Windows operating system.

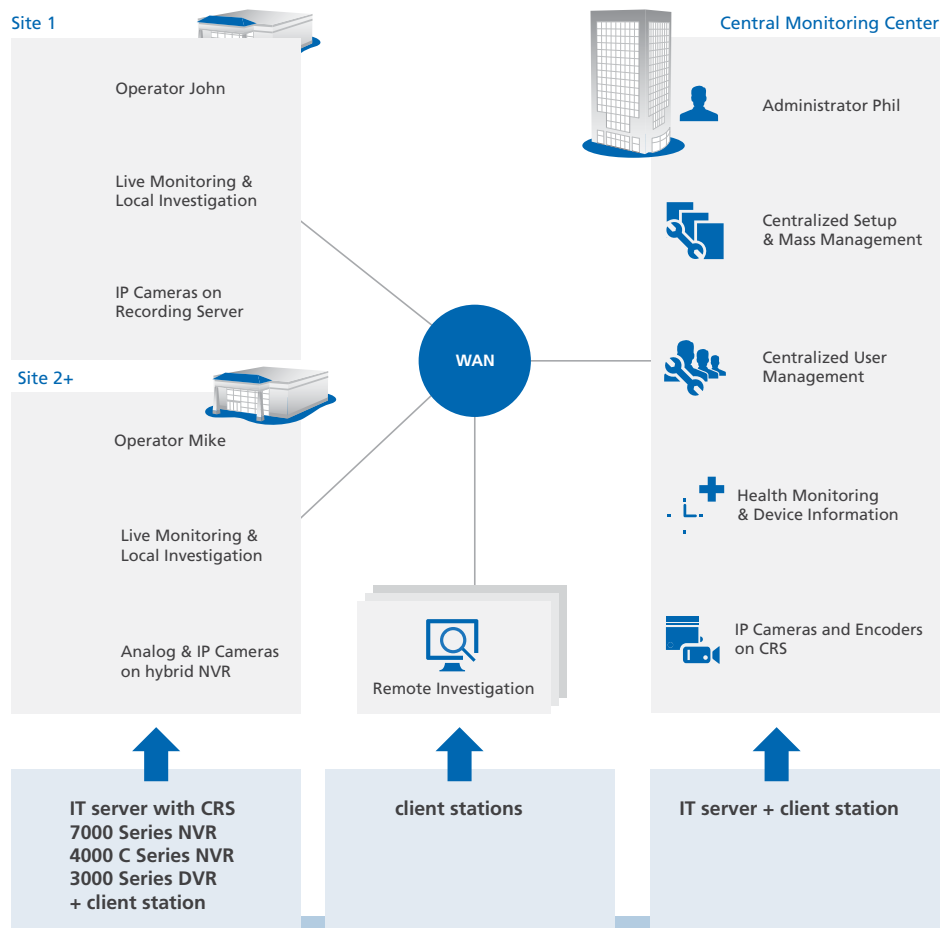
We understand that different types of system users could have very different job responsibilities in terms of how they use Command. The system administrator's daily tasks are very different than those of a guard, and different still from those of an incident investigator. To accommodate this, the Command user interface can be tailored so that each user sees only the portion(s) of the interface that he or she will need to perform their job, without being distracted by system features and icons they don't need.



## Many Security Tasks, One User Interface



# Command Solution for Multiple Distributed Sites



## “Networks” really is our middle name

At March Networks®, we focus on delivering intelligent video management solutions that help our customers realize the true business value of networked video. For close to a decade, leading commercial and government organizations worldwide — including over 450 of the world’s banks — have used our digital video and business analysis applications to reduce losses, mitigate risks, improve security and work more efficiently.

One of the first manufacturers to introduce networked and hybrid surveillance platforms to the market, today our diversified portfolio delivers complete IP video solutions, from megapixel cameras and embedded analytics to video management system software running on industry-standard servers.

This end-to-end solution strategy gives our customers the flexibility to deploy all-IP video today, or transition to an open, IP video

environment through the selective adoption of advanced technologies. It also supports the common management of both IP and hybrid IP/analog systems across a large-scale enterprise with hundreds, or thousands, of locations.

Our systems are delivered through an extensive distribution and partner network and currently support over one million channels of video in more than 50 countries.