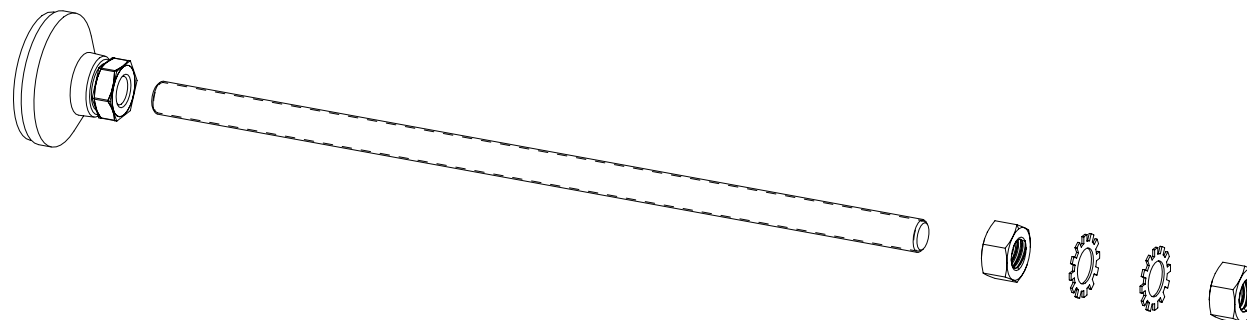


THIS COPY IS PROVIDED ON A RESTRICTED BASIS AND IS NOT TO BE USED IN ANY WAY DETRIMENTAL TO THE INTERESTS OF PANDUIT CORP.

PANDUIT P/N	DESCRIPTION	WEIGHT
CUCMSS03ST01NC	NET-CONTAIN UAC MID-SPAN CABINET SUPPORT 300mm HIGH	.50 Kg/EACH [ 1.1 LBS/EACH ]
CUCMSS06ST01NC	NET-CONTAIN UAC MID-SPAN CABINET SUPPORT 600mm HIGH	.76 Kg/EACH [ 1.7 LBS/EACH ]



1. VISIT OUR ON-LINE CATALOG AT [WWW.PANDUIT.COM](http://WWW.PANDUIT.COM) FOR A LIST OF CURRENT PARTS APPLICABLE FOR USE WITH THIS PRODUCT.
2. PARTS SUPPLIED:
  - 1- THREADED ROD
  - 1- SWIVEL MOUNT
  - 2- EXTERNAL TOOTH LOCKWASHERS
  - 2- HEX NUTS
  - 1- INSTRUCTION SHEET
3. PRIMARY DIMENSIONS ARE IN MILLIMETERS.

						TITLE	
						(CUCMSS**ST**NC) NET-CONTAIN UAC MID-SPAN CABINET SUPPORT	
						CUSTOMER DRAWING	
						ITEM REVISION NAME	
						12V359SV/00	
						DATASET FILE NAME	
						12V359SV_DC/00A	
						MATERIAL:	
						N/A	
						DRAWING NUMBER:	
						12V359SV - DC	
						THIRD ANGLE PROJECTION	
						DRAWN BY	
						PBS	
						DATE	
						5-30-14	
						CHK	
						PATR	
						SCALE	
						NONE	
						SHT 1 OF 1	
						SIZE	
						A	

00A	5-30-14	PBS	PATR	SGI	RELEASED TO PRODUCTION	12V359SV-DC
REV	DATE	BY	CHK	APR	DESCRIPTION	ECN

B

A

A

A

1