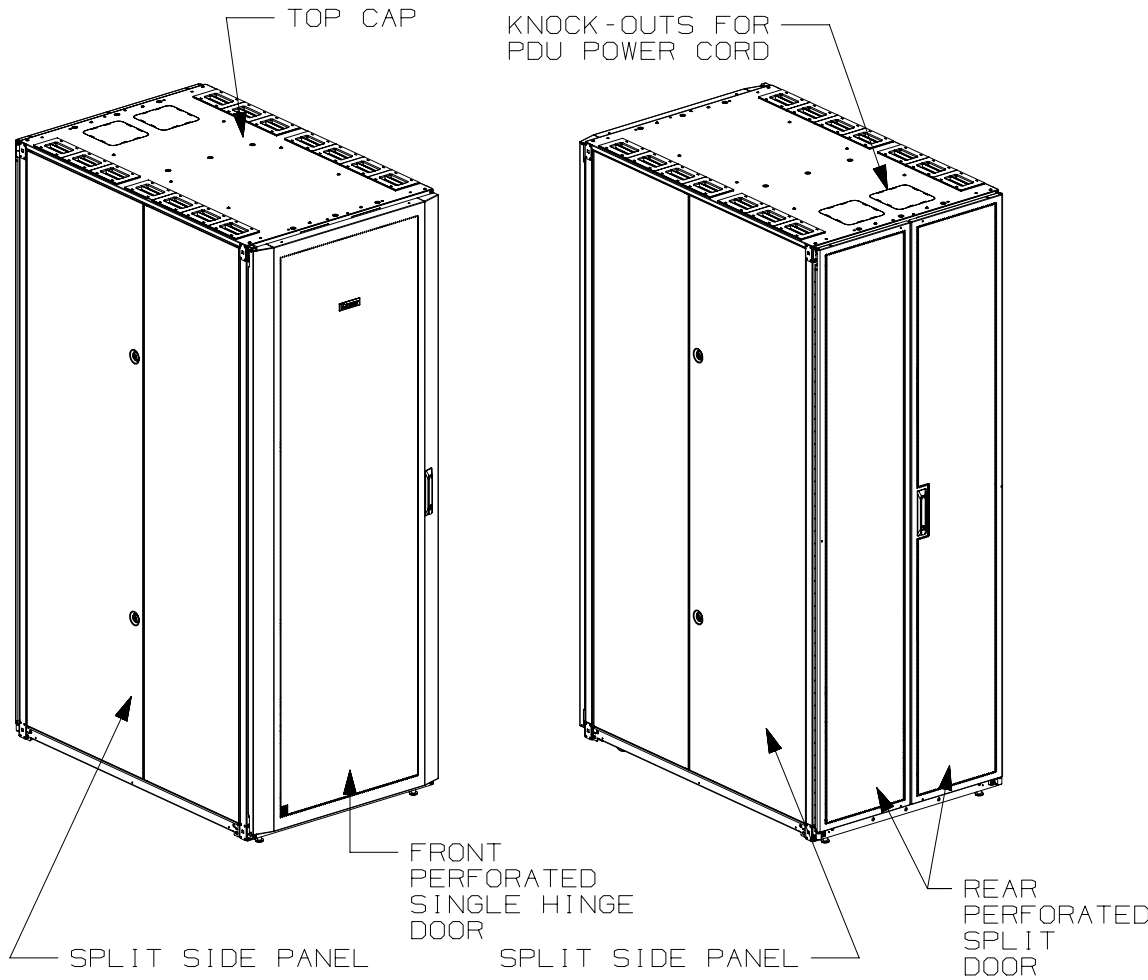


THIS COPY IS PROVIDED ON A RESTRICTED BASIS AND IS NOT TO BE USED IN ANY WAY DETRIMENTAL TO THE INTERESTS OF PANDUIT CORP.

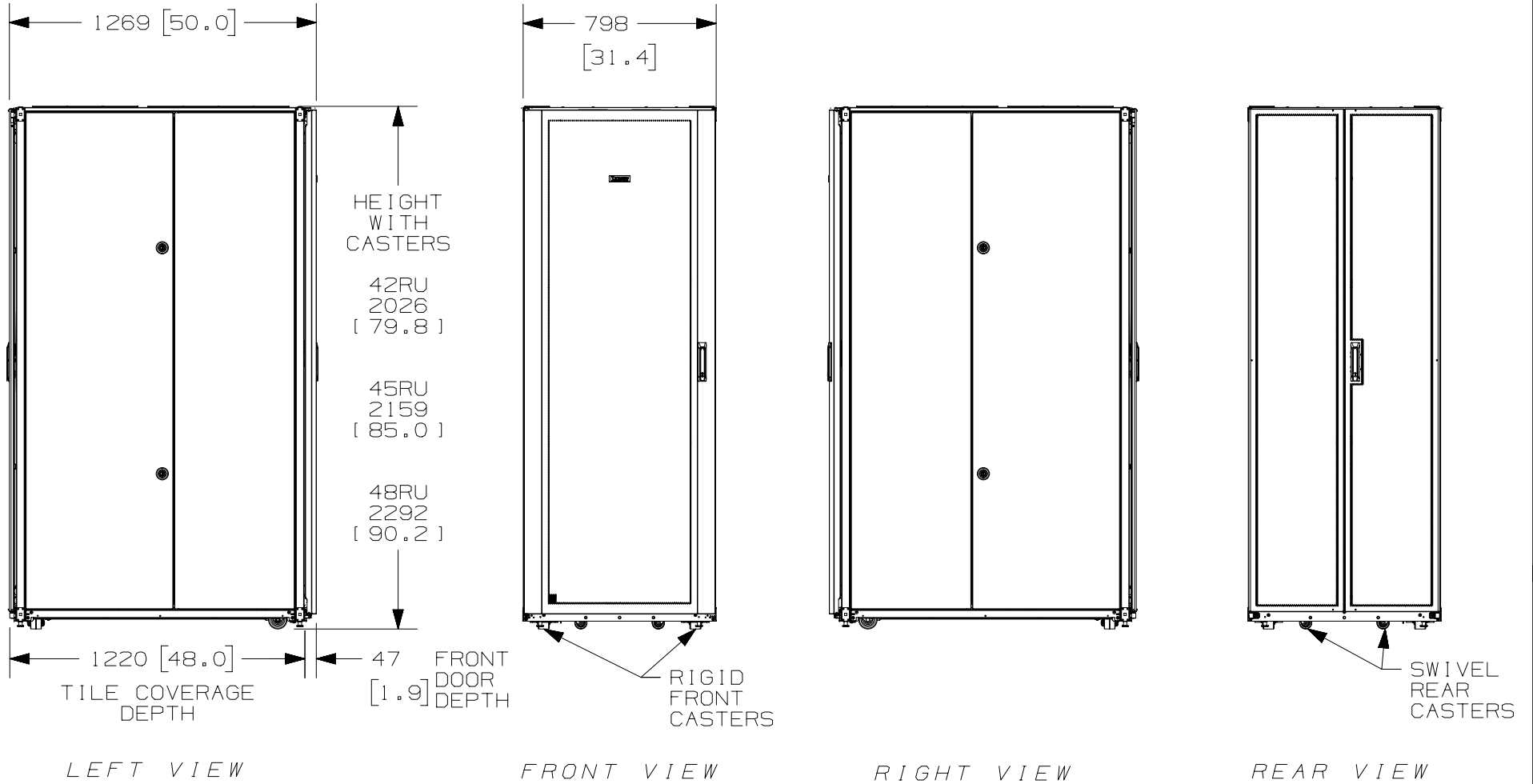


1. VISIT OUR ON-LINE CATALOG AT WWW.PANDUIT.COM FOR A LIST OF CURRENT PARTS APPLICABLE FOR USE WITH THIS PRODUCT.
2. PRIMARY DIMENSIONS ARE IN MILLIMETERS.
3. FACTORY SETTINGS:
 - FRONT FACE OF FRONT E-RAILS ARE 167mm [6.57in] FROM FRONT FACE OF FRAME.
 - FRONT FACE OF REAR E-RAILS ARE 412.75mm [16.25in] FROM FRONT FACE OF FRONT E-RAILS.
4. ADJUSTMENTS:
 - RAIL ADJUSTMENT MEASUREMENTS ARE TAKEN FROM THE FRONT FACE OF EACH EQUIPMENT RAIL.
 - FRONT E-RAILS CAN ADJUST AS FAR FORWARD AS 167mm [6.57in] FROM FRONT FACE OF FRAME.
 - WHEN FRONT E-RAILS ARE 167mm [6.57in] FROM FRONT FACE OF FRAME, REAR E-RAILS CAN ADJUST FROM 62mm [2.44in] TO 423mm [16.65in] AND FROM 473mm [18.62in] TO 975mm [38.38in].
5. CAN BE USED WITH ANY 19" EIA STANDARD COMPONENT IN ADDITION TO ALL PANDUIT HORIZONTAL CABLE MANAGEMENT AND PATCH PANEL PRODUCTS.
6. EIA UNIVERSAL STANDARD HOLE PROGRESSION ON EQUIPMENT RAILS
 15.88mm [.625in], 15.88mm [.625in], 12.70mm [.5in], 15.88mm [.625in], 15.88mm [.625in], 12.70mm [.5in]...ETC.
7. PARTS SUPPLIED:
 - BASE CABINET
 - FRONT PERFORATED SINGLE HINGE DOOR (SEE CHART ON SHEET 2)
 - REAR PERFORATED SPLIT DOOR (SEE CHART ON SHEET 2)
 - SPLIT SIDE PANELS (SEE CHART ON SHEET 2)
 - CAGE NUT UTILITY STYLE EQUIPMENT RAILS FRONT AND REAR (SEE CHART ON SHEET 2)
 - CABLE MANAGEMENT FINGERS (SEE CHART ON SHEET 2)
 - CABINET HARDWARE KIT
 - INSTRUCTION SHEET
8. RACK UNIT SPACING NUMERALS ARE CLEARLY PRINTED ON EQUIPMENT MOUNTING RAILS.
9. FULLY BONDED STRUCTURE WHEN ASSEMBLED PER INSTRUCTIONS.
10. STATIC LOAD RATING, 1360 Kg (3000 LBS)
11. ROLLING LOAD RATING, 1133 Kg (2500 LBS)
12. SINGLE POINT GROUND LOCATIONS AT TOP AND BOTTOM OF CABINET.
13. ALL CABINET RAILS ARE INSTALLED NUMBERS UP.

| REV | DATE | BY | CHK | APR | DESCRIPTION | ECN |
|-----|----------|------|-----|------|--------------------------------|-------------|
| 01A | 12-02-14 | MDCA | ADP | TCN | FLOOR MOUNT DIMENSIONS UPDATED | V09000BX |
| 00A | 6-07-13 | PBS | JDW | JDWE | RELEASED TO PRODUCTION | 12V352BV-DC |

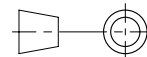
| | | | | |
|--------------------|---------|-------------------------------------------------------------------|-------|------|
| TITLE | | NET-ACCESS S TYPE UTILITY CABINET 800mm WIDE X 1200mm DEEP FAMILY | | |
| | | CUSTOMER DRAWING | | |
| ITEM REVISION NAME | | 12V352BV/01.PRT | | |
| DATASET FILE NAME | | 12V352BV_DC/01A.PRT | | |
| | | MATERIAL: | | |
| | | N/A | | |
| | | DRAWING NUMBER: | | |
| | | 12V352BV-DC | | |
| DRAWN BY | DATE | CHK | SCALE | SIZE |
| PBS | 6-07-13 | JDW | NONE | A |

THIS COPY IS PROVIDED ON A RESTRICTED BASIS AND IS NOT TO BE USED IN ANY WAY DETRIMENTAL TO THE INTERESTS OF PANDUIT CORP.



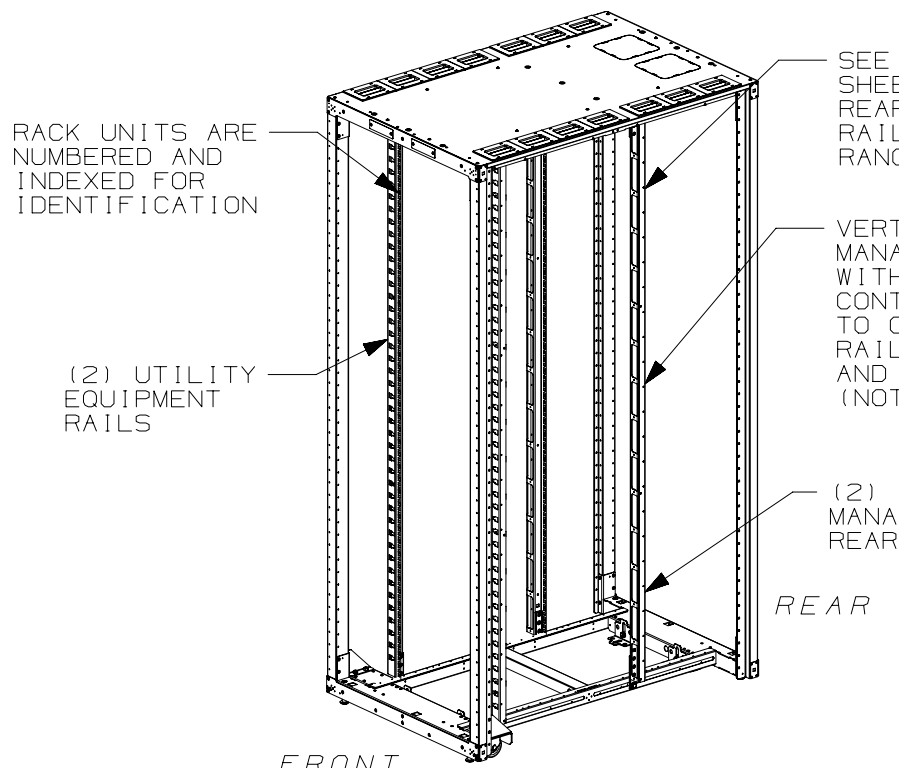
| REV | DATE | BY | CHK | APR | DESCRIPTION | ECN |
|-----|----------|------|-----|------|--------------------------------|-------------|
| 01A | 12-02-14 | MDCA | ADP | TCN | SEE SHEET 1 OF 5 FOR REVISIONS | V09000BX |
| 00A | 6-07-13 | PBS | JDW | JDWE | SEE SHEET 1 OF 5 FOR REVISIONS | 12V352BV-DC |

| | | | |
|--------------------|---------|-------------------------------------------------------------------|-------|
| TITLE | | NET-ACCESS S TYPE UTILITY CABINET 800mm WIDE X 1200mm DEEP FAMILY | |
| | | CUSTOMER DRAWING | |
| ITEM REVISION NAME | | 12V352BV/01.PRT | |
| DATASET FILE NAME | | 12V352BV_DC/01A.PRT | |
| MATERIAL: | | N/A | |
| DRAWING NUMBER: | | 12V352BV-DC | |
| DRAWN BY | DATE | CHK | SCALE |
| PBS | 6-07-13 | JDW | NONE |
| SHT 3 OF 5 | | SIZE A | |

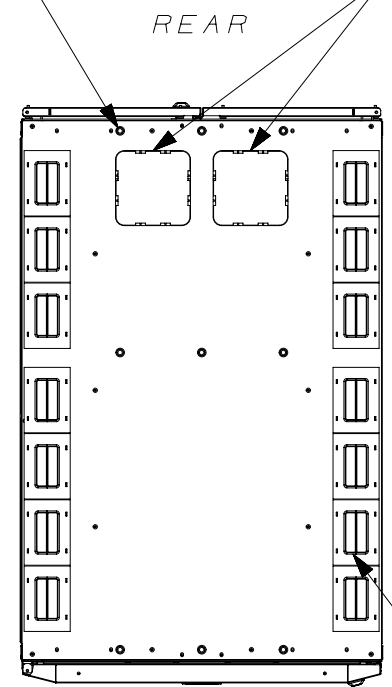


THIRD ANGLE PROJECTION

THIS COPY IS PROVIDED ON A RESTRICTED BASIS AND IS NOT TO BE USED IN ANY WAY DETRIMENTAL TO THE INTERESTS OF PANDUIT CORP.



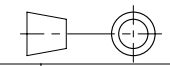
(9) LOCATIONS TAPPED FOR M10 THREADED ROD



FRONT DOOR, REAR DOOR, AND SIDE PANELS NOT SHOWN

| REV | DATE | BY | CHK | APR | DESCRIPTION | ECN |
|-----|----------|------|-----|------|--------------------------------|-------------|
| 01A | 12-02-14 | MDCA | ADP | TCN | SEE SHEET 1 OF 5 FOR REVISIONS | V09000BX |
| 00A | 6-07-13 | PBS | JDW | JDWE | SEE SHEET 1 OF 5 FOR REVISIONS | 12V352BV-DC |

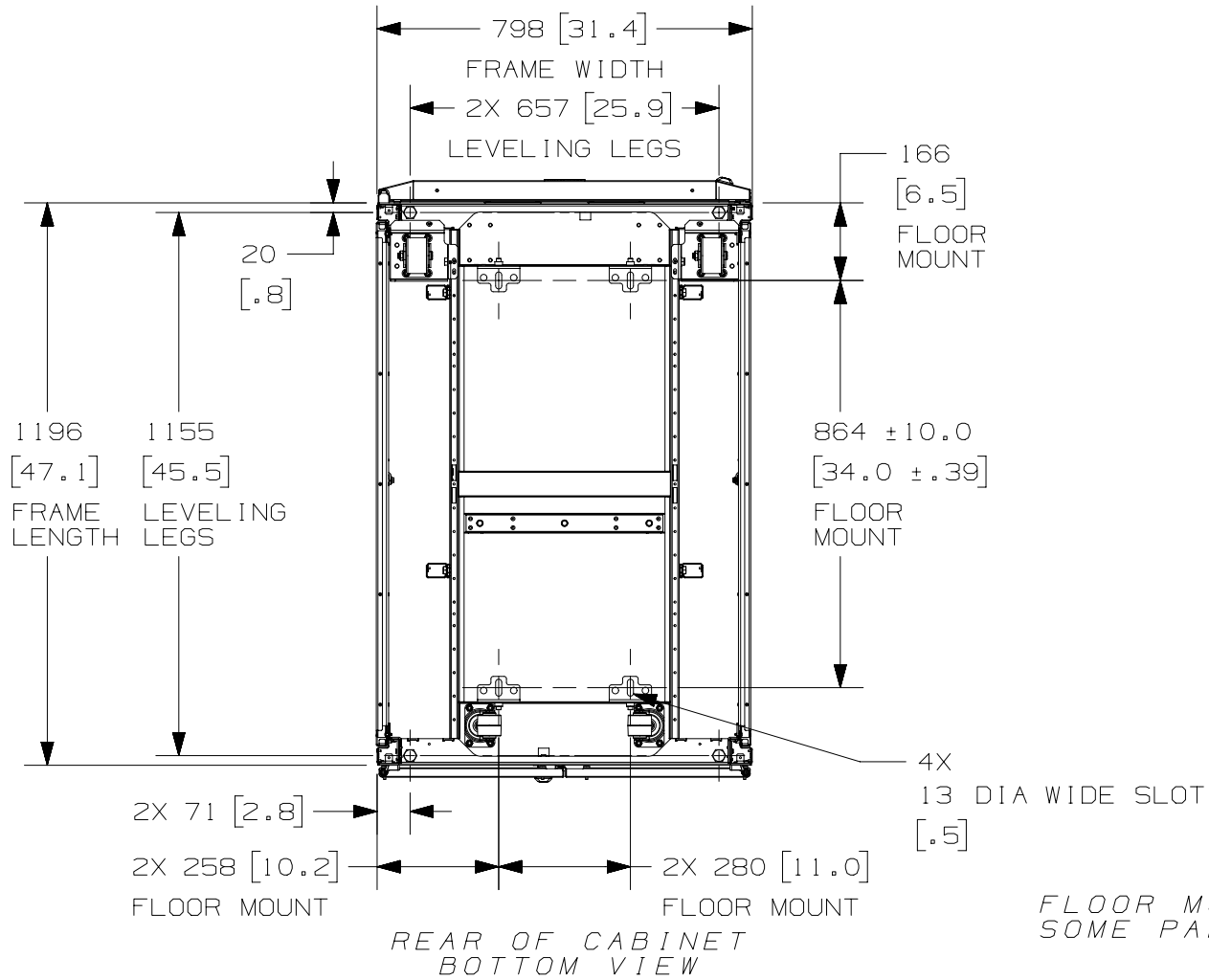
| | | | | |
|--------------------|---------|-------------------------------------------------------------------|-------|------|
| TITLE | | NET-ACCESS S TYPE UTILITY CABINET 800mm WIDE X 1200mm DEEP FAMILY | | |
| | | CUSTOMER DRAWING | | |
| ITEM REVISION NAME | | 12V352BV/01.PRT | | |
| DATASET FILE NAME | | 12V352BV_DC/01A.PRT | | |
| | | MATERIAL: N/A | | |
| | | DRAWING NUMBER: 12V352BV-DC | | |
| DRAWN BY | DATE | CHK | SCALE | SIZE |
| PBS | 6-07-13 | JDW | NONE | A |



THIRD ANGLE PROJECTION



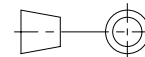
THIS COPY IS PROVIDED ON A RESTRICTED BASIS AND IS NOT TO BE USED IN ANY WAY DETRIMENTAL TO THE INTERESTS OF PANDUIT CORP.



FLOOR MOUNTING HOLE LOCATIONS - SOME PARTS REMOVED FOR CLARITY

| REV | DATE | BY | CHK | APR | DESCRIPTION | ECN |
|-----|----------|------|-----|------|--------------------------------|-------------|
| 01A | 12-02-14 | MDCA | ADP | TCN | SEE SHEET 1 OF 5 FOR REVISIONS | V09000BX |
| 00A | 6-07-13 | PBS | JDW | JDWE | SEE SHEET 1 OF 5 FOR REVISIONS | 12V352BV-DC |

| | | | |
|--------------------|---------|-------------------------------------------------------------------|-------|
| TITLE | | NET-ACCESS S TYPE UTILITY CABINET 800mm WIDE X 1200mm DEEP FAMILY | |
| | | CUSTOMER DRAWING | |
| ITEM REVISION NAME | | 12V352BV/01.PRT | |
| DATASET FILE NAME | | 12V352BV_DC/01A.PRT | |
| MATERIAL: | | N/A | |
| DRAWING NUMBER: | | 12V352BV-DC | |
| DRAWN BY | DATE | CHK | SCALE |
| PBS | 6-07-13 | JDW | NONE |
| SHT 5 OF 5 | | A | |



THIRD ANGLE PROJECTION