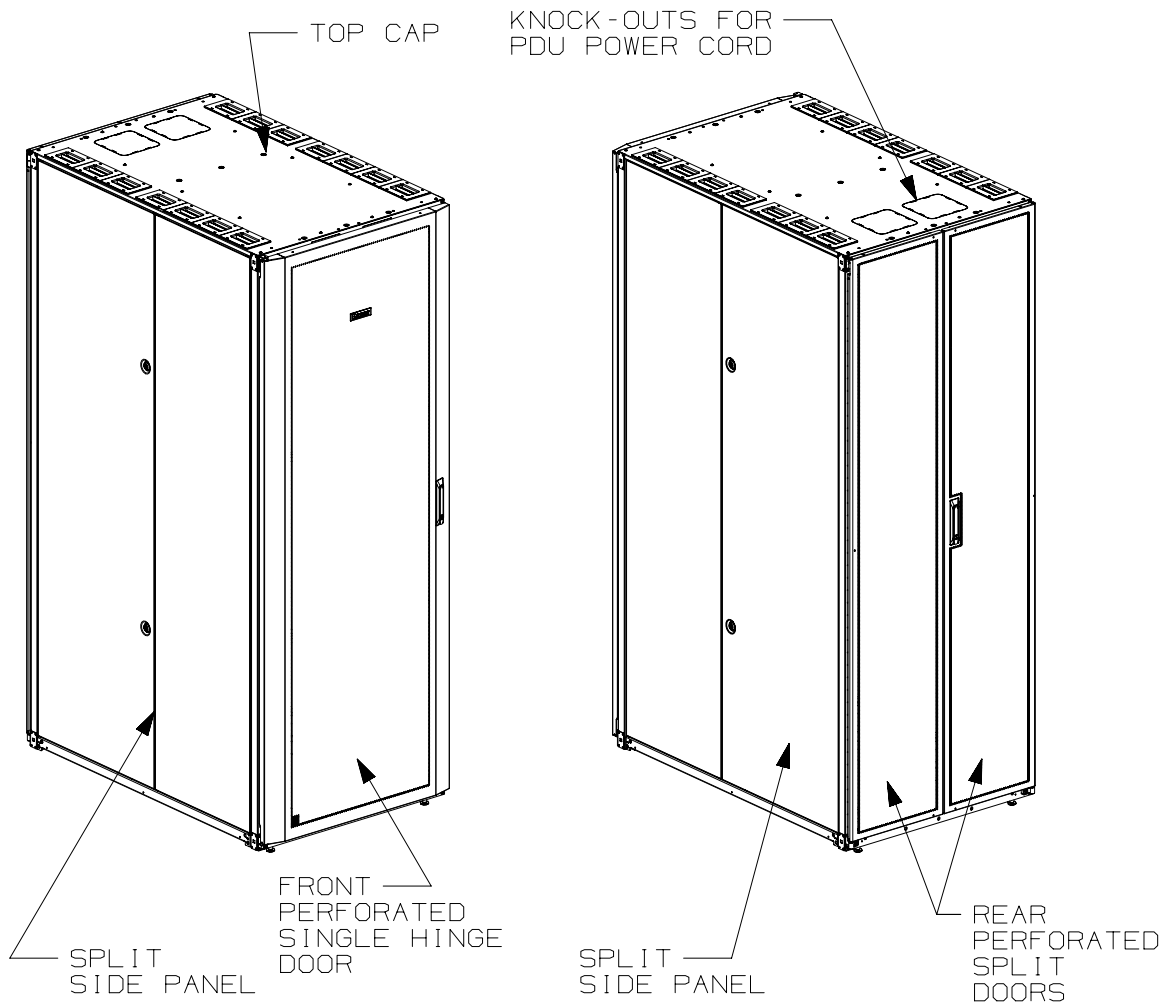


THIS COPY IS PROVIDED ON A RESTRICTED BASIS AND IS NOT TO BE USED IN ANY WAY DETRIMENTAL TO THE INTERESTS OF PANDUIT CORP.



1. VISIT OUR ON-LINE CATALOG AT [WWW.PANDUIT.COM](http://WWW.PANDUIT.COM) FOR A LIST OF CURRENT PARTS APPLICABLE FOR USE WITH THIS PRODUCT.
2. PRIMARY DIMENSIONS ARE IN MILLIMETERS.
3. RAIL ADJUSTMENT MEASUREMENTS ARE TAKEN FROM THE FRONT FACE OF EACH EQUIPMENT RAIL. INDEPENDENT ADJUSTABLE REAR EQUIPMENT MOUNTING RAILS (EIA) ADJUST FROM 141mm [5.5in] TO 532mm [20.9in] AND FROM 583mm [22.9in] TO 1085mm [42.7in] WITH PDU BRACKETS AND CABLE MANAGEMENT FINGERS IN PLACE.
4. CAN BE USED WITH ANY 19" EIA STANDARD COMPONENT IN ADDITION TO ALL PANDUIT HORIZONTAL CABLE MANAGEMENT AND PATCH PANEL PRODUCTS.
5. EIA UNIVERSAL STANDARD HOLE PROGRESSION ON EQUIPMENT RAILS  
15.88mm [.625in], 15.88mm [.625in],  
12.70mm [.50in], 15.88mm [.625in],  
15.88mm [.625in], 12.7mm [.50in]...ETC.
6. PARTS SUPPLIED:  
-BASE CABINET  
-FRONT PERFORATED SINGLE HINGE DOOR (SEE CHART ON SHEET 2)  
-REAR PERFORATED SPLIT DOOR (SEE CHART ON SHEET 2)  
-EQUIPMENT RAILS FRONT & REAR (SEE CHART ON SHEET 2)  
-PDU BRACKETS (SEE CHART ON SHEET 2)  
-CASTERS (SEE CHART ON SHEET 2)  
-INSTRUCTION SHEET
7. RACK UNIT SPACING NUMERALS ARE CLEARLY PRINTED ON EQUIPMENT MOUNTING RAILS.
8. FULLY BONDED STRUCTURE WHEN ASSEMBLED PER INSTRUCTIONS.
9. STATIC LOAD RATING. 1360 Kg (3000 LBS)
10. ROLLING LOAD RATING. 1133 Kg (2500 LBS)
11. SINGLE POINT GROUND LOCATIONS AT TOP AND BOTTOM OF CABINET.
12. ALL CABINET RAILS ARE INSTALLED NUMBERS UP.
13. MAXIMUM EQUIPMENT DEPTH, 1111mm [43.75].

## TITLE

NET-ACCESS S TYPE CABINET W/O CASTERS  
800mm WIDE X 1200mm DEEP FAMILY

CUSTOMER DRAWING

## ITEM REVISION NAME

12V352BJ/01.PRT

## DATASET FILE NAME

12V352BJ\_DC/01A.PRT

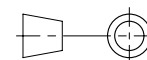
**PANDUIT**

## MATERIAL:

N/A

## DRAWING NUMBER:

12V352BJ-DC



THIRD ANGLE  
PROJECTION

## DRAWN BY

MDCA

## DATE

6-03-13

## CHK

NAGL

## SCALE

NONE

SHT 1 OF 5

## SIZE

A

01A	9-29-14	PBS	ADP	TCN	FLOOR MOUNT DIMENSIONS UPDATED	V09000BX	
00A	6-03-13	MDCA	NAGL	JDWE	RELEASED TO PRODUCTION	12V352BJ-DC	
REV	DATE	BY	CHK	APR	DESCRIPTION	ECN	

THIS COPY IS PROVIDED ON A RESTRICTED BASIS AND IS NOT TO BE USED IN ANY WAY DETRIMENTAL TO THE INTERESTS OF PANDUIT CORP.


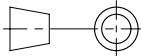
PART NO.	DESCRIPTION	SINGLE HINGE FRONT DOOR	SPLIT REAR DOOR	SPLIT SIDE PANEL	FRONT CAGE NUT E-RAIL	REAR CAGE NUT FINGER MGMT E-RAIL	REAR CAGE NUT VERTICAL PATCH E-RAIL	STANDARD POU BRACKETS	CASTERS	CABLE MGMT FINGERS	CABINET WEIGHT FULLY UNPACKAGED	CABINET WEIGHT SHIPPING WEIGHT
S8222*9	NET-ACCESS S-TYPE CABINET 800mm X 42RU X 1200mm DEEP	01	01	02	02	02	00	02	00	00	149 Kg/EACH 329 LBS/EACH	170 Kg/EACH 374 LBS/EACH
S8522*9	NET-ACCESS S-TYPE CABINET 800mm X 45RU X 1200mm DEEP	01	01	02	02	02	00	02	00	00	163 Kg/EACH 359 LBS/EACH	183 Kg/EACH 404 LBS/EACH
S8822*9	NET-ACCESS S-TYPE CABINET 800mm X 48RU X 1200mm DEEP	01	01	02	02	02	00	02	00	00	176 Kg/EACH 389 LBS/EACH	197 Kg/EACH 434 LBS/EACH
S8229*9	NET-ACCESS S-TYPE CABINET 800mm X 42RU X 1200mm DEEP	01	01	00	02	02	00	02	00	00	110 Kg/EACH 242 LBS/EACH	130 Kg/EACH 287 LBS/EACH
S8529*9	NET-ACCESS S-TYPE CABINET 800mm X 45RU X 1200mm DEEP	01	01	00	02	02	00	02	00	00	116 Kg/EACH 257 LBS/EACH	137 Kg/EACH 302 LBS/EACH
S8829*9	NET-ACCESS S-TYPE CABINET 800mm X 48RU X 1200mm DEEP	01	01	00	02	02	00	02	00	00	123 Kg/EACH 272 LBS/EACH	144 Kg/EACH 317 LBS/EACH

\* DENOTES COLOR

"B" = BLACK

"W" = WHITE

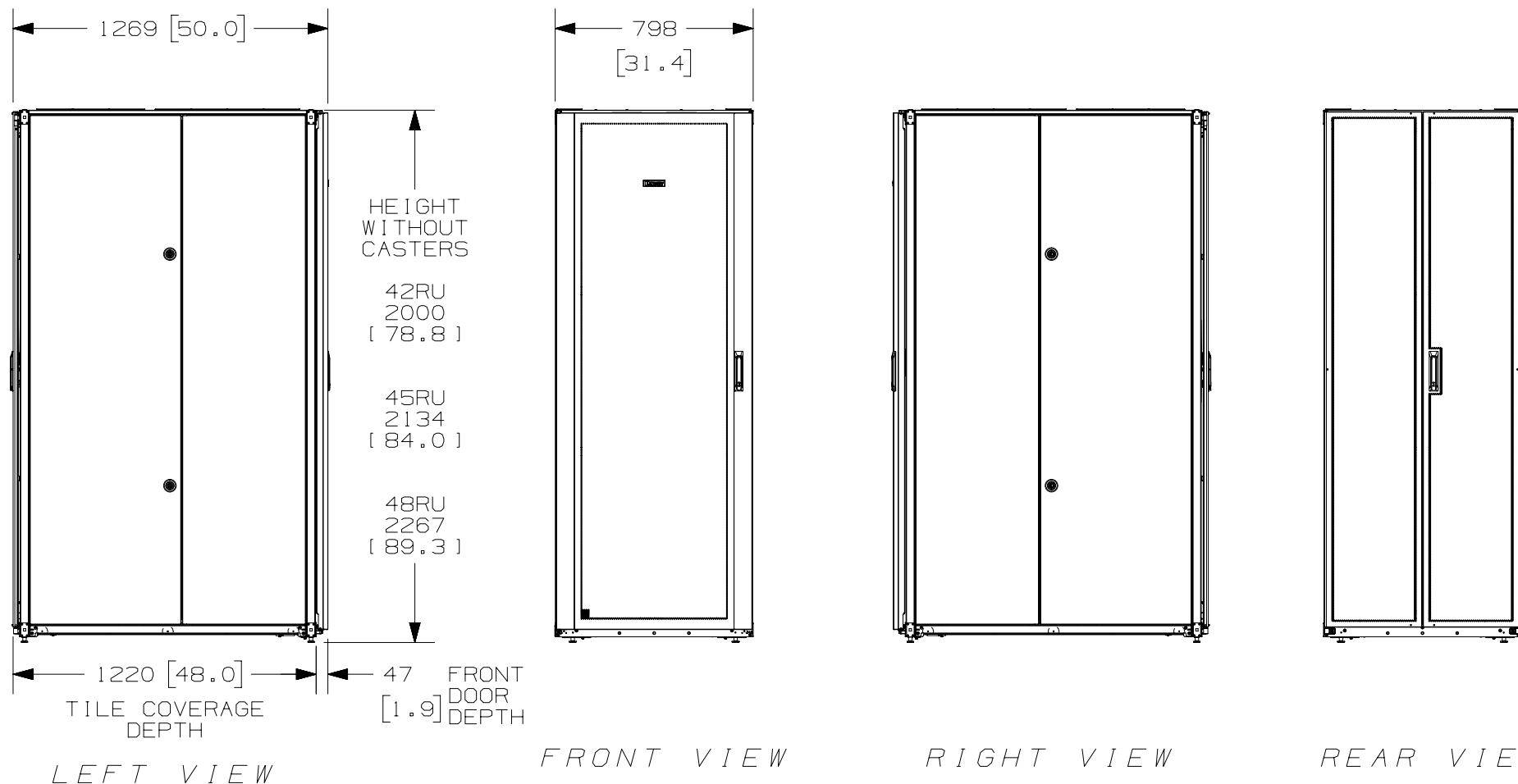
01A	9-29-14	PBS	ADP	TCN	SEE SHEET 1 OF 5 FOR REVISIONS	V09000BX
00A	6-03-13	MDCA	NAGL	JDWE	SEE SHEET 1 OF 5 FOR REVISIONS	12V352BJ-DC
REV	DATE	BY	CHK	APR	DESCRIPTION	ECN

TITLE						
NET-ACCESS S TYPE CABINET W/O CASTERS 800mm WIDE X 1200mm DEEP FAMILY						
CUSTOMER DRAWING						
ITEM REVISION NAME 12V352BJ/01.PRT						
DATASET FILE NAME 12V352BJ_DC/01A.PRT						
 THIRD ANGLE PROJECTION				MATERIAL:  N/A		
				DRAWING NUMBER: 12V352BJ-DC		
DRAWN BY	DATE	CHK	SCALE	SHT 2 OF 5		SIZE
MDCA	6-03-13	NAGL	NONE			A

2

1

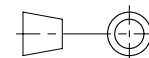
THIS COPY IS PROVIDED ON A RESTRICTED BASIS AND IS NOT TO BE USED IN ANY WAY DETRIMENTAL TO THE INTERESTS OF PANDUIT CORP.



A

A

						TITLE	
						NET-ACCESS S TYPE CABINET W/O CASTERS 800mm WIDE X 1200mm DEEP FAMILY	
						CUSTOMER DRAWING	
						ITEM REVISION NAME	<b>PANDUIT</b>
						12V352BJ/01.PRT	
						DATASET FILE NAME	
						12V352BJ_DC/01A.PRT	MATERIAL:  N/A
01A	9-29-14	PBS	ADP	TCN	SEE SHEET 1 OF 5 FOR REVISIONS	V09000BX	DRAWING NUMBER: 12V352BJ-DC
00A	6-03-13	MDCA	NAGL	JDWE	SEE SHEET 1 OF 5 FOR REVISIONS	12V352BJ-DC	
REV	DATE	BY	CHK	APR	DESCRIPTION	ECN	



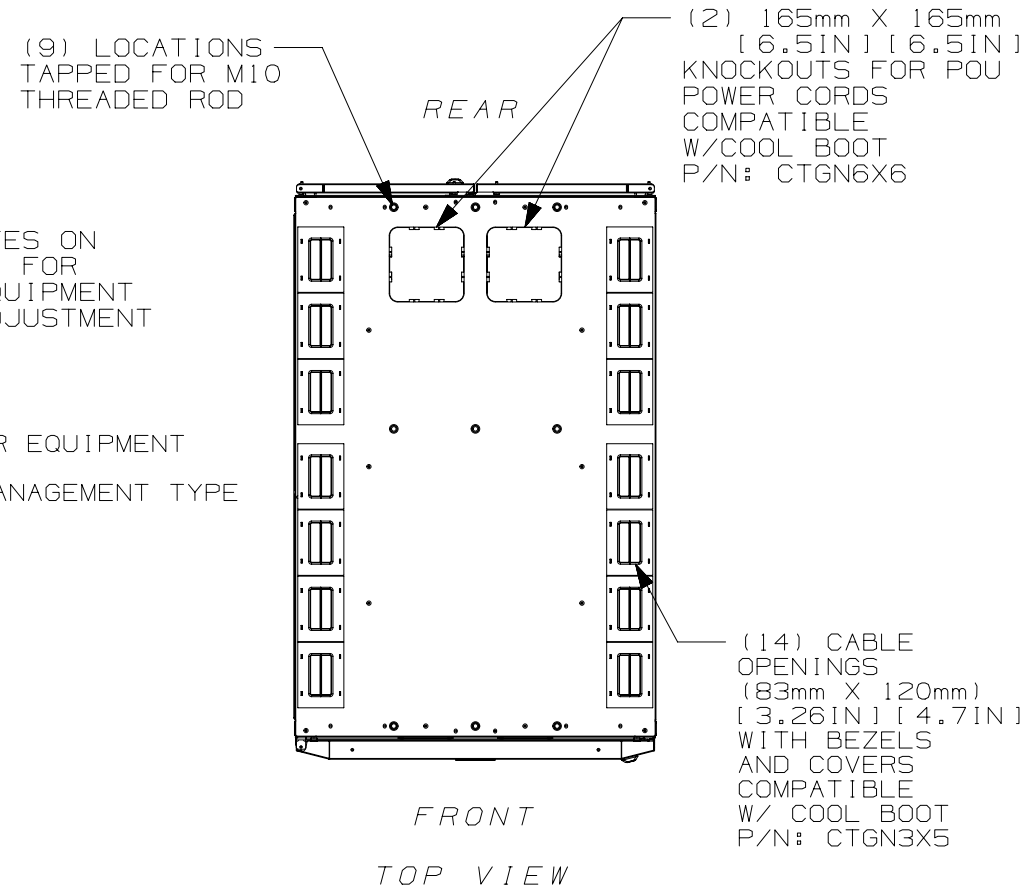
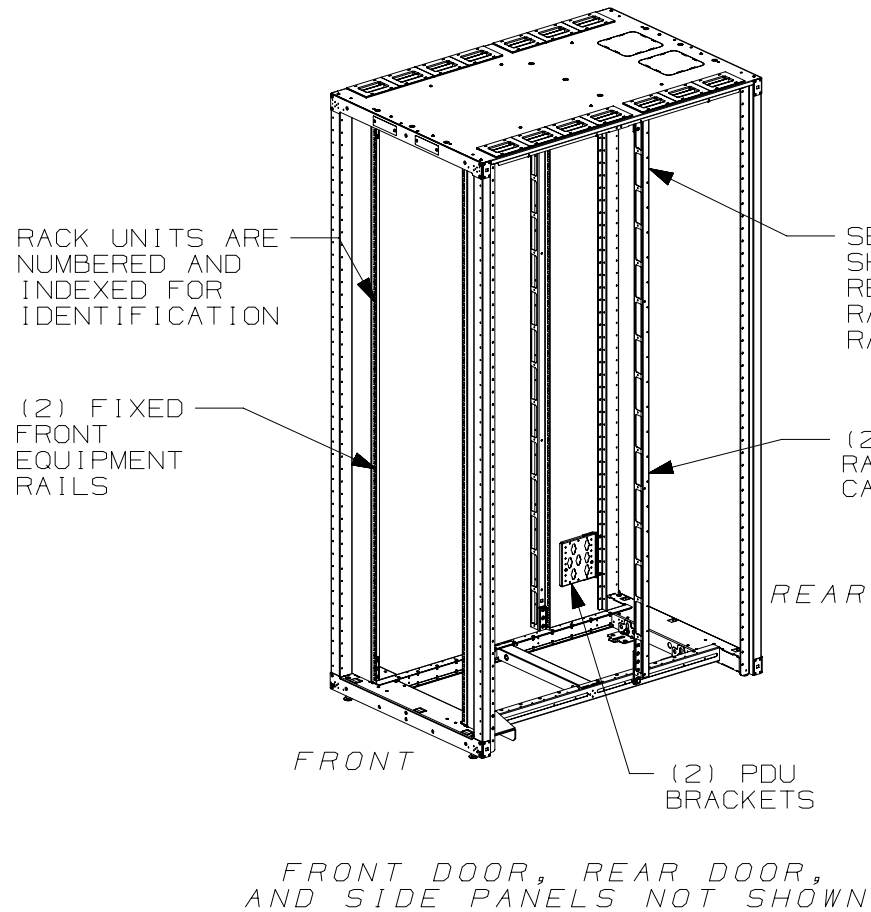
THIRD ANGLE  
PROJECTION

DRAWN BY	DATE	CHK	SCALE		
MDCA	6-03-13	NAGL	NONE	SHT 3 OF 5	A

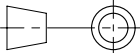
2

1

THIS COPY IS PROVIDED ON A RESTRICTED BASIS AND IS NOT TO BE USED IN ANY WAY DETRIMENTAL TO THE INTERESTS OF PANDUIT CORP.



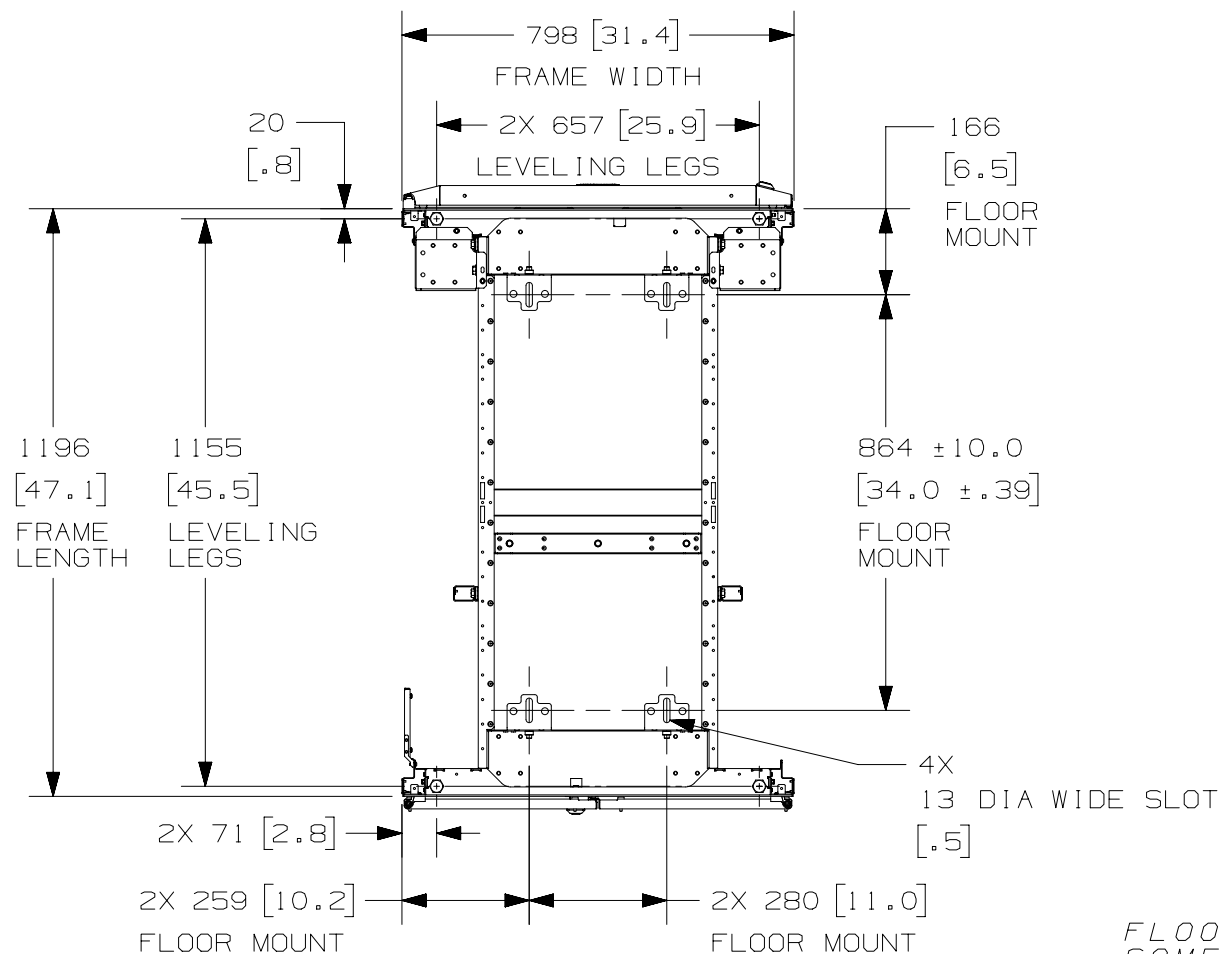
01A	9-29-14	PBS	ADP	TCN	SEE SHEET 1 OF 5 FOR REVISIONS	V09000BX
00A	6-03-13	MDCA	NAGL	JDWE	SEE SHEET 1 OF 5 FOR REVISIONS	12V352BJ-DC
REV	DATE	BY	CHK	APR	DESCRIPTION	ECN

TITLE				NET-ACCESS S TYPE CABINET W/O CASTERS 800mm WIDE X 1200mm DEEP FAMILY	
				CUSTOMER DRAWING	
ITEM REVISION NAME		12V352BJ/01.PRT		<b>PANDUIT</b>	
DATASET FILE NAME		12V352BJ_DC/01A.PRT			
		THIRD ANGLE PROJECTION		MATERIAL:	
				N/A	
				DRAWING NUMBER:	
		12V352BJ-DC			
DRAWN BY	DATE	CHK	SCALE	SIZE	
MDCA	6-03-13	NAGL	NONE	SHT 4 OF 5	
				A	

2

1

THIS COPY IS PROVIDED ON A RESTRICTED BASIS AND IS NOT TO BE USED IN ANY WAY DETRIMENTAL TO THE INTERESTS OF PANDUIT CORP.



FLOOR MOUNTING HOLE LOCATIONS -  
SOME PARTS REMOVED FOR CLARITY

REAR OF CABINET  
BOTTOM VIEW

TITLE

NET-ACCESS S TYPE CABINET W/O CASTERS  
800mm WIDE X 1200mm DEEP FAMILY

CUSTOMER DRAWING

ITEM REVISION NAME

12V352BJ/01.PRT

DATASET FILE NAME

12V352BJ\_DC/01A.PRT

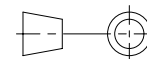
**PANDUIT**

MATERIAL:

N/A

DRAWING NUMBER:

12V352BJ-DC



THIRD ANGLE  
PROJECTION

DRAWN BY

MDCA

DATE

6-03-13

CHK

NAGL

SCALE

NONE

ECN

12V352BJ-DC

REV

DATE

BY

CHK

APR

DESCRIPTION

ECN

DRAWN BY

MDCA

DATE

6-03-13

CHK

NAGL

SCALE

NONE

SHT 5 OF 5

SIZE

A

2

1