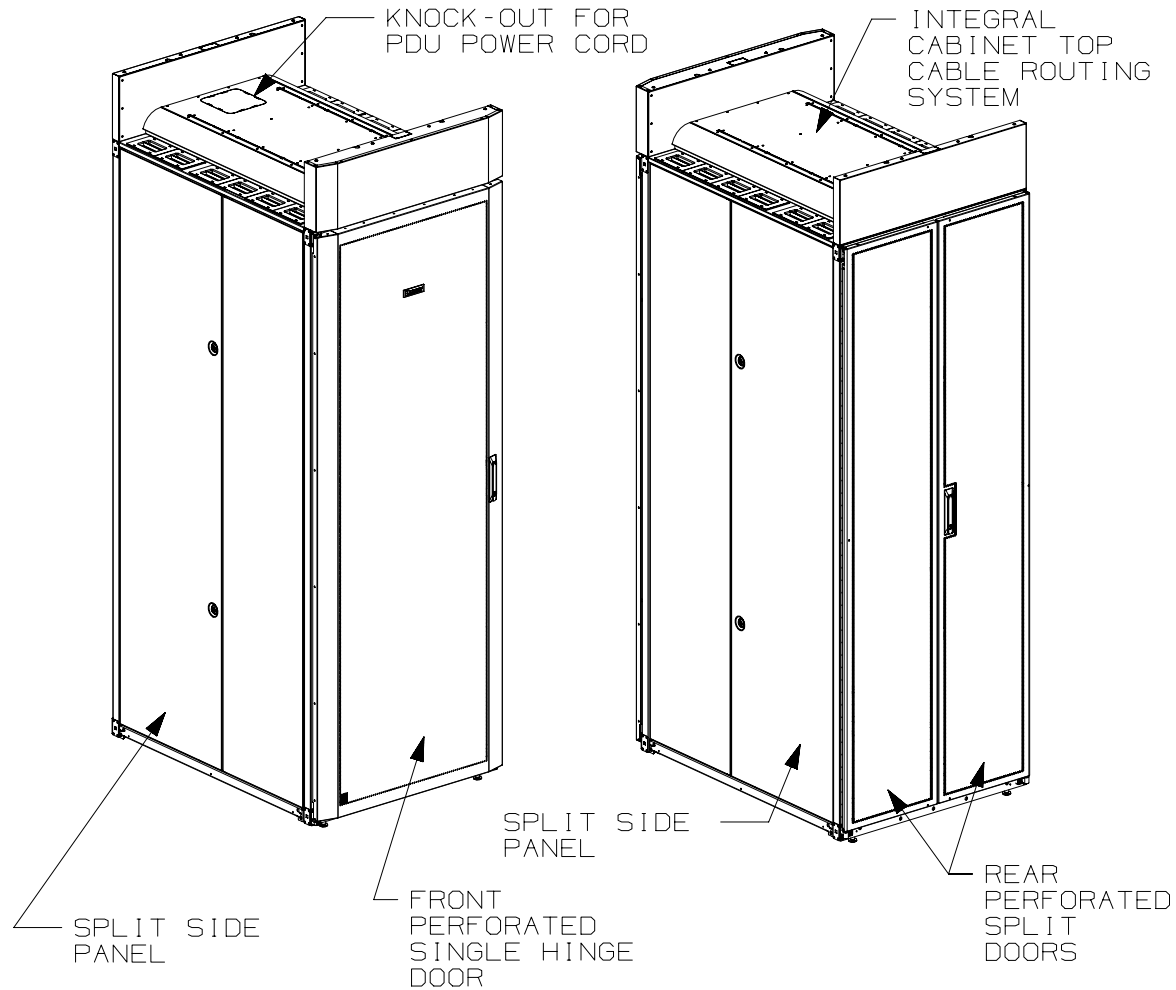


THIS COPY IS PROVIDED ON A RESTRICTED BASIS AND IS NOT TO BE USED IN ANY WAY DETRIMENTAL TO THE INTERESTS OF PANDUIT CORP.



1. VISIT OUR ON-LINE CATALOG AT [WWW.PANDUIT.COM](http://WWW.PANDUIT.COM) FOR A LIST OF CURRENT PARTS APPLICABLE FOR USE WITH THIS PRODUCT.
2. PRIMARY DIMENSIONS ARE IN MILLIMETERS.
3. RAIL ADJUSTMENTS MEASUREMENTS ARE TAKEN FROM THE FRONT FACE OF EACH EQUIPMENT RAIL. INDEPENDENT ADJUSTABLE REAR EQUIPMENT MOUNTING RAILS (EIA) ADJUST FROM 141mm [5.5in] TO 437mm [17.2in] AND FROM 526mm [20.7in] TO 933mm [36.7in] WITH PDU BRACKETS AND CABLE MANAGEMENT FINGERS IN PLACE.
4. CAN BE USED WITH ANY 19" EIA STANDARD COMPONENT IN ADDITION TO ALL PANDUIT HORIZONTAL CABLE MANAGEMENT AND PATCH PANEL PRODUCTS.
5. EIA UNIVERSAL STANDARD HOLE PROGRESSION ON EQUIPMENT RAILS 15.88mm [.625in], 15.88mm [.625in], 12.70mm [.5in], 15.88mm [.625in], 15.88mm [.625in], 12.7mm [.5in]...ETC.
6. PARTS SUPPLIED:
  - BASE CABINET
  - FRONT PERFORATED SINGLE HINGE DOOR (SEE CHART ON SHEET 2)
  - REAR PERFORATED SPLIT DOOR (SEE CHART ON SHEET 2)
  - SPLIT SIDE PANELS (SEE SHEET 2)
  - EQUIPMENT RAILS FRONT & REAR (SEE CHART ON SHEET 2)
  - PDU BRACKETS (SEE CHART ON SHEET 2)
  - CABINET HARDWARE KIT
  - INSTRUCTION SHEET
7. RACK UNIT SPACING NUMERALS ARE CLEARLY PRINTED ON EQUIPMENT MOUNTING RAILS.
8. FULLY BONDED STRUCTURE WHEN ASSEMBLED PER INSTRUCTIONS.
9. STATIC LOAD RATING. 1360 Kg (3000 LBS)
10. ROLLING LOAD RATING. 1133 Kg (2500 LBS)
11. SINGLE POINT GROUND LOCATIONS AT TOP AND BOTTOM OF CABINET.
12. ALL CABINET RAILS ARE INSTALLED NUMBERS UP.
13. MAXIMUM EQUIPMENT DEPTH, 959mm [37.75].

01A	11-24-14	PBS	ADP	TCN	FLOOR MOUNT DIMENSIONS UPDATED	V09000BX	
00A	7-07-14	PBS	ROJC	TCN	RELEASED TO PRODUCTION	12V352CE-DC	
REV	DATE	BY	CHK	APR	DESCRIPTION	ECN	

TITLE		NET-ACCESS S-TYPE CABINET W/INTEGRAL CABINET TOP CABLE ROUTING SYSTEM - NO CASTERS 800mm WIDE X 1070mm DEEP FAMILY CUSTOMER DRAWING					
ITEM REVISION NAME		12V352CE/01.PRT					
DATASET FILE NAME		12V352CE_DC/01A.PRT					
		MATERIAL:					
		N/A					
		DRAWING NUMBER:					
		12V352CE-DC					
DRAWN BY		DATE	CHK	SCALE	THIRD ANGLE PROJECTION		
PBS		7-07-14	ROJC	NONE	SHT 1 OF 5		
					SIZE		
					A		

THIS COPY IS PROVIDED ON A RESTRICTED BASIS AND IS NOT TO BE USED IN ANY WAY DETRIMENTAL TO THE INTERESTS OF PANDUIT CORP.

PART NO.	DESCRIPTION	SINGLE HINGE FRONT DOOR	SPLIT REAR DOOR	SPLIT SIDE PANEL	FRONT CAGE NUT E-RAIL	REAR CAGE NUT FINGER MGMT E-RAIL	REAR CAGE NUT VERTICAL PATCH E-RAIL	STANDARD PDU BRACKETS	CASTERS	CABLE MGMT FINGERS	VERTICAL PATCHING	CABINET WEIGHT FULLY UNPACKAGED	CABINET WEIGHT SHIPPING WEIGHT
S8212*T9	NET-ACCESS S-TYPE CABINET 800mm X 42RU X 1070mm DEEP	01	01	02	02	02	00	02	00	00	00	150 Kg/EACH 330 LBS/EACH	170 Kg/EACH 375 LBS/EACH
S8512*T9	NET-ACCESS S-TYPE CABINET 800mm X 45RU X 1070mm DEEP	01	01	02	02	02	00	02	00	00	00	156 Kg/EACH 345 LBS/EACH	177 Kg/EACH 390 LBS/EACH
S8812*T9	NET-ACCESS S-TYPE CABINET 800mm X 48RU X 1070mm DEEP	01	01	02	02	02	00	02	00	00	00	163 Kg/EACH 360 LBS/EACH	184 Kg/EACH 405 LBS/EACH
S8219*T9	NET-ACCESS S-TYPE CABINET 800mm X 42RU X 1070mm DEEP	01	01	00	02	02	00	02	00	00	00	117 Kg/EACH 257 LBS/EACH	137 Kg/EACH 302 LBS/EACH
S8519*T9	NET-ACCESS S-TYPE CABINET 800mm X 45RU X 1070mm DEEP	01	01	00	02	02	00	02	00	00	00	123 Kg/EACH 272 LBS/EACH	144 Kg/EACH 317 LBS/EACH
S8819*T9	NET-ACCESS S-TYPE CABINET 800mm X 48RU X 1070mm DEEP	01	01	00	02	02	00	02	00	00	00	130 Kg/EACH 287 LBS/EACH	151 Kg/EACH 332 LBS/EACH

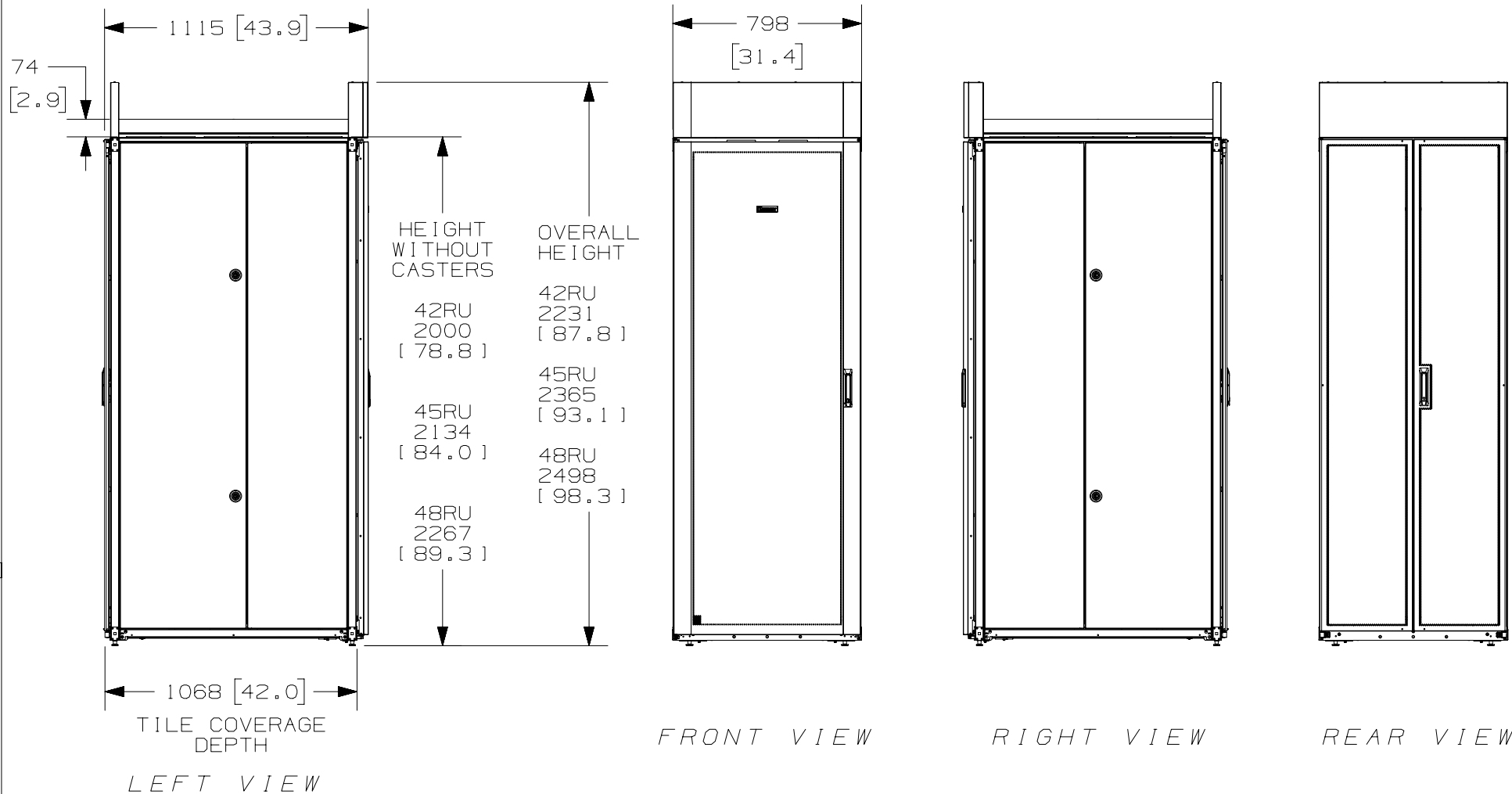
\* DENOTES COLOR  
 "B" = BLACK  
 "W" = WHITE

							TITLE NET-ACCESS S-TYPE CABINET W/INTEGRAL CABINET TOP CABLE ROUTING SYSTEM - NO CASTERS 800mm WIDE X 1070mm DEEP FAMILY CUSTOMER DRAWING						
							ITEM REVISION NAME 12V352CE/01.PRT				<div>PANDUIT</div>		
							DATASET FILE NAME 12V352CE_DC/01A.PRT						
											MATERIAL:  N/A		
01A	11-24-14	PBS	ADP	TCN	SEE SHEET 1 OF 5 FOR REVISIONS	V09000BX					DRAWING NUMBER: 12V352CE-DC		
00A	7-07-14	PBS	ROJC	TCN	SEE SHEET 1 OF 5 FOR REVISIONS	12V352CE-DC	<div><div><div></div><div></div></div><div><div></div><div></div></div></div> <div>THIRD ANGLE PROJECTION</div>						
REV	DATE	BY	CHK	APR	DESCRIPTION	ECN	DRAWN BY PBS	DATE 7-07-14	CHK ROJC	SCALE NONE	SHT 2 OF 5	SIZE A	

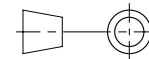
2

1

THIS COPY IS PROVIDED ON A RESTRICTED BASIS AND IS NOT TO BE USED IN ANY WAY DETRIMENTAL TO THE INTERESTS OF PANDUIT CORP.



						TITLE	
						NET-ACCESS S-TYPE CABINET W/INTEGRAL CABINET TOP CABLE ROUTING SYSTEM - NO CASTERS 800mm WIDE X 1070mm DEEP FAMILY CUSTOMER DRAWING	
						ITEM REVISION NAME	<b>PANDUIT</b>
						12V352CE/01.PRT	
						DATASET FILE NAME	
						12V352CE_DC/01A.PRT	MATERIAL:
01A	11-24-14	PBS	ADP	TCN	SEE SHEET 1 OF 5 FOR REVISIONS	V09000BX	DRAWING NUMBER: 12V352CE-DC
00A	7-07-14	PBS	ROJC	TCN	SEE SHEET 1 OF 5 FOR REVISIONS	12V352CE-DC	
REV	DATE	BY	CHK	APR	DESCRIPTION	ECN	



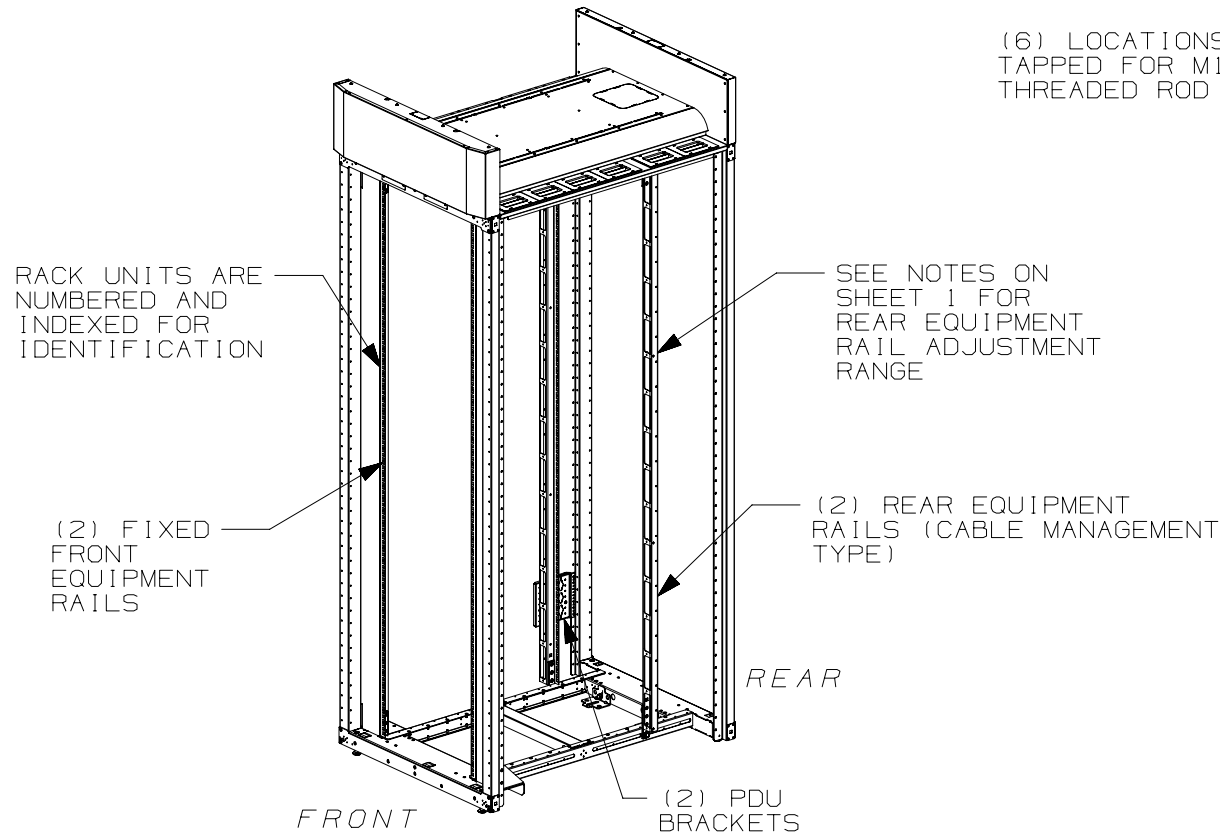
THIRD ANGLE  
PROJECTION

DRAWN BY	DATE	CHK	SCALE	DRAWING NUMBER:		SIZE
PBS	7-07-14	ROJC	NONE	SHT 3 OF 5		A

2

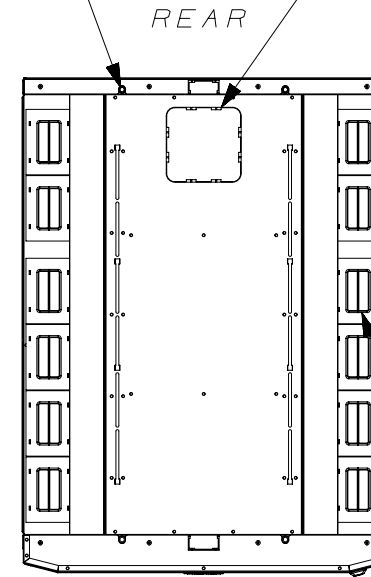
1

THIS COPY IS PROVIDED ON A RESTRICTED BASIS AND IS NOT TO BE USED IN ANY WAY DETRIMENTAL TO THE INTERESTS OF PANDUIT CORP.



(6) LOCATIONS TAPPED FOR M10 THREADED ROD

(1) 165mm X 165mm [6.5in] [6.5in] KNOCKOUT FOR PDU POWER CORDS COMPATIBLE W/COOL BOOT P/N: CTGN6X6


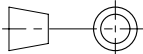


(12) CABLE OPENINGS (83mm X 120mm) [3.26in] [4.7in] WITH BEZELS AND COVERS COMPATIBLE W/ COOL BOOT P/N: CTGN3X5

TOP VIEW

FRONT DOOR, REAR DOOR, AND SIDE PANELS NOT SHOWN

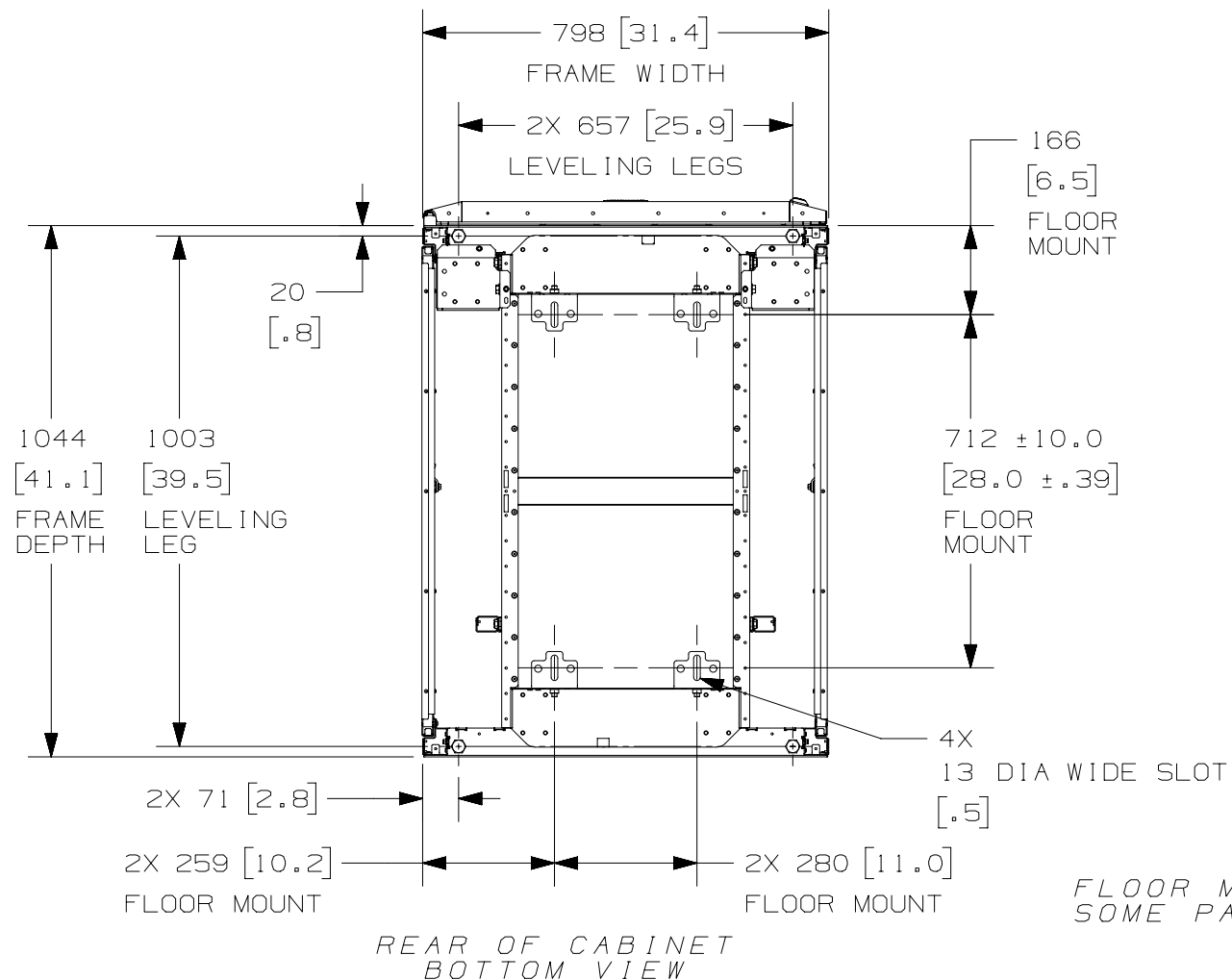
01A	11-24-14	PBS	ADP	TCN	SEE SHEET 1 OF 5 FOR REVISIONS	V09000BX
00A	7-07-14	PBS	ROJC	TCN	SEE SHEET 1 OF 5 FOR REVISIONS	12V352CE-DC
REV	DATE	BY	CHK	APR	DESCRIPTION	ECN

TITLE NET-ACCESS S-TYPE CABINET W/INTEGRAL CABINET TOP CABLE ROUTING SYSTEM - NO CASTERS 800mm WIDE X 1070mm DEEP FAMILY CUSTOMER DRAWING					
ITEM REVISION NAME 12V352CE/01.PRT					
DATASET FILE NAME 12V352CE_DC/01A.PRT					
 THIRD ANGLE PROJECTION				MATERIAL:  N/A	
				DRAWING NUMBER: 12V352CE - DC	
DRAWN BY PBS	DATE 7-07-14	CHK ROJC	SCALE NONE	SHT 4 OF 5	
				SIZE A	

2

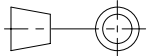
1

THIS COPY IS PROVIDED ON A RESTRICTED BASIS AND IS NOT TO BE USED IN ANY WAY DETRIMENTAL TO THE INTERESTS OF PANDUIT CORP.



A

A

							TITLE NET-ACCESS S-TYPE CABINET W/INTEGRAL CABINET TOP CABLE ROUTING SYSTEM - NO CASTERS 800mm WIDE X 1070mm DEEP FAMILY CUSTOMER DRAWING			
							ITEM REVISION NAME 12V352CE/01.PRT			
							DATASET FILE NAME 12V352CE_DC/01A.PRT			
							MATERIAL:  N/A			
01A	11-24-14	PBS	ADP	TCN	SEE SHEET 1 OF 5 FOR REVISIONS	V09000BX	 THIRD ANGLE PROJECTION			
00A	7-07-14	PBS	ROJC	TCN	SEE SHEET 1 OF 5 FOR REVISIONS	12V352CE-DC				
REV	DATE	BY	CHK	APR	DESCRIPTION	ECN	DRAWN BY PBS	DATE 7-07-14	CHK ROJC	SCALE NONE
							DRAWING NUMBER: 12V352CE-DC			
							SHT 5 OF 5			
							SIZE A			

2

1