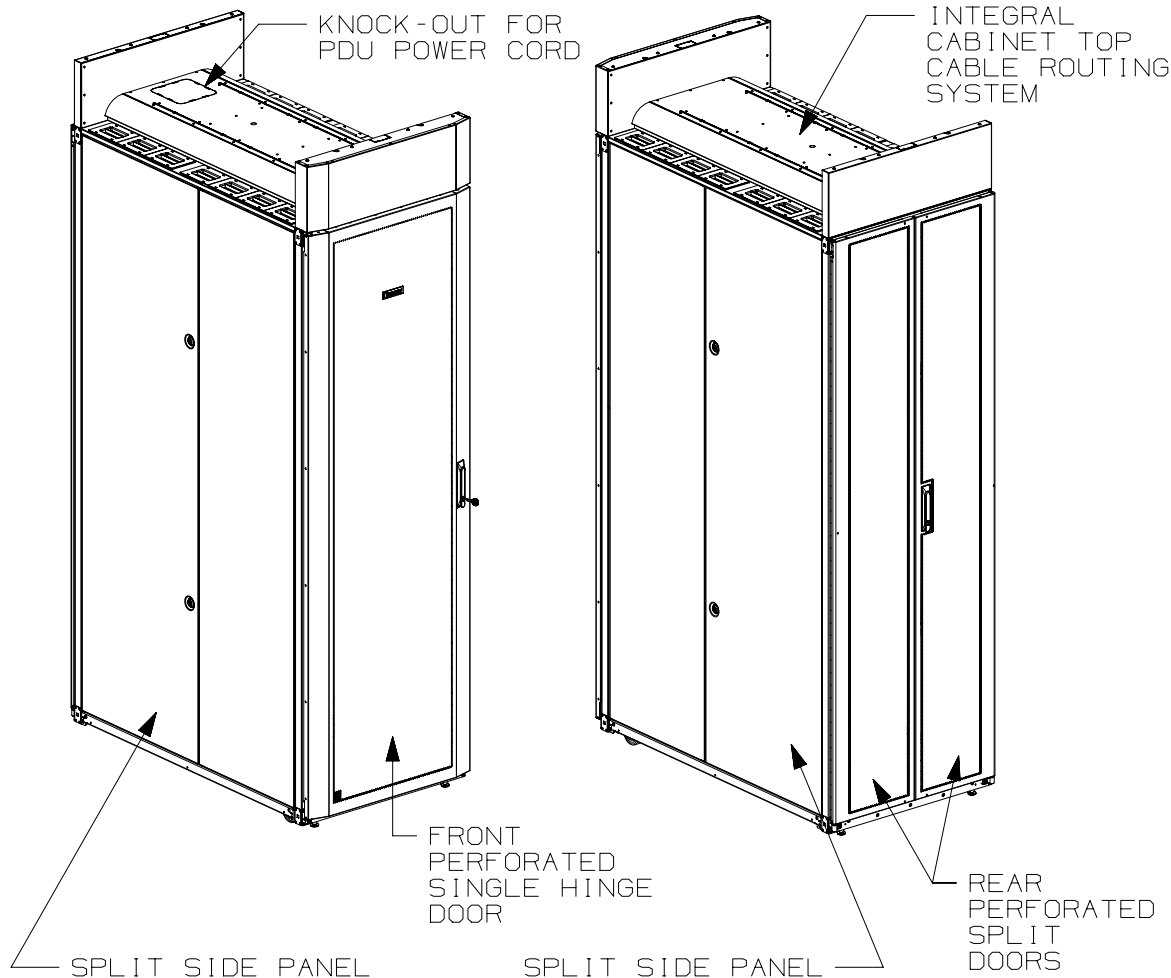


THIS COPY IS PROVIDED ON A RESTRICTED BASIS AND IS NOT TO BE USED IN ANY WAY DETRIMENTAL TO THE INTERESTS OF PANDUIT CORP.



1. VISIT OUR ON-LINE CATALOG AT [WWW.PANDUIT.COM](http://WWW.PANDUIT.COM) FOR A LIST OF CURRENT PARTS APPLICABLE FOR USE WITH THIS PRODUCT.
2. PRIMARY DIMENSIONS ARE IN MILLIMETERS.
3. RAIL ADJUSTMENT MEASUREMENTS ARE TAKEN FROM THE FRONT FACE OF EACH EQUIPMENT RAIL. INDEPENDENT ADJUSTABLE REAR EQUIPMENT MOUNTING RAILS (EIA) ADJUST FROM 141mm [5.5in] TO 532mm [20.9in] AND FROM 583mm [22.9in] TO 1085mm [42.7in] WITH PDU BRACKETS AND CABLE MANAGEMENT FINGERS IN PLACE.
4. CAN BE USED WITH ANY 19" EIA STANDARD COMPONENT IN ADDITION TO ALL PANDUIT HORIZONTAL CABLE MANAGEMENT AND PATCH PANEL PRODUCTS.
5. EIA UNIVERSAL STANDARD HOLE PROGRESSION ON EQUIPMENT RAILS  
15.88mm [.625in], 15.88mm [.625in],  
12.70mm [.5in], 15.88mm [.625in],  
15.88mm [.625in], 12.7mm [.5in]...ETC.
6. PARTS SUPPLIED:  
-BASE CABINET  
-FRONT PERFORATED SINGLE HINGE DOOR (SEE CHART ON SHEET 2)  
-REAR PERFORATED SPLIT DOOR (SEE CHART ON SHEET 2)  
-SPLIT SIDE PANELS (SEE SHEET 2)  
-EQUIPMENT RAILS FRONT & REAR (SEE CHART ON SHEET 2)  
-PDU BRACKETS (SEE CHART ON SHEET 2)  
-CASTERS (SEE CHART ON SHEET 2)  
-CABINET HARDWARE KIT  
-INSTRUCTION SHEET
7. RACK UNIT SPACING NUMERALS ARE CLEARLY PRINTED ON EQUIPMENT MOUNTING RAILS.
8. FULLY BONDED STRUCTURE WHEN ASSEMBLED PER INSTRUCTIONS.
9. STATIC LOAD RATING. 1360 Kg (3000 LBS)
10. ROLLING LOAD RATING. 1133 Kg (2500 LBS)
11. SINGLE POINT GROUND LOCATIONS AT TOP AND BOTTOM OF CABINET.
12. ALL CABINET RAILS ARE INSTALLED NUMBERS UP.
13. MAXIMUM EQUIPMENT DEPTH, 1111mm [43.75].

TITLE  
NET-ACCESS S-TYPE CABINET W/INTEGRAL  
CABINET TOP CABLE ROUTING SYSTEM 700mm  
WIDE X 1200mm DEEP FAMILY  
CUSTOMER DRAWING

ITEM REVISION NAME

12V352BB/01.PRT

DATASET FILE NAME

12V352BB\_DC/01A.PRT

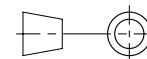
**PANDUIT**

MATERIAL:

N/A

DRAWING NUMBER:

12V352BB-DC



THIRD ANGLE  
PROJECTION

DRAWN BY

DATE

CHK

SCALE

PBS

4-15-13

NONE

SHT 1 OF 5

SIZE

A

01A	12-12-14	MDCA	ADP	TCN	FLOOR MOUNT DIMENSIONS UPDATED	V09000BX	
00A	4-15-13	PBS	JDW	JDWE	RELEASED TO PRODUCTION	12V352BB-DC	
REV	DATE	BY	CHK	APR	DESCRIPTION	ECN	


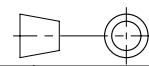
THIS COPY IS PROVIDED ON A RESTRICTED BASIS AND IS NOT TO BE USED IN ANY WAY DETRIMENTAL TO THE INTERESTS OF PANDUIT CORP.

PART NO.	DESCRIPTION	SINGLE HINGE FRONT DOOR	SPLIT REAR DOOR	SPLIT SIDE PANEL	FRONT CAGE NUT E-RAIL	REAR CAGE NUT FINGER MGMT E-RAIL	REAR CAGE NUT VERTICAL PATCH E-RAIL	STANDARD PDU BRACKETS	CASTERS	CABLE MGMT FINGERS	VERTICAL PATCHING	CABINET WEIGHT FULLY UNPACKAGED	CABINET WEIGHT SHIPPING WEIGHT
S7222*T	NET-ACCESS S-TYPE CABINET 700mm X 42RU X 1200mm DEEP	01	01	02	02	02	00	02	04	00	00	149 Kg/EACH 330 LBS/EACH	170 Kg/EACH 375 LBS/EACH
S7522*T	NET-ACCESS S-TYPE CABINET 700mm X 45RU X 1200mm DEEP	01	01	02	02	02	00	02	04	00	00	156 Kg/EACH 345 LBS/EACH	176 Kg/EACH 390 LBS/EACH
S7822*T	NET-ACCESS S-TYPE CABINET 700mm X 48RU X 1200mm DEEP	01	01	02	02	02	00	02	04	00	00	163 Kg/EACH 360 Kg/EACH	183 Kg/EACH 405 LBS/EACH
S7229*T	NET-ACCESS S-TYPE CABINET 700mm X 42RU X 1200mm DEEP	01	01	00	02	02	00	02	04	00	00	110 Kg/EACH 243 LBS/EACH	130 Kg/EACH 288 LBS/EACH
S7529*T	NET-ACCESS S-TYPE CABINET 700mm X 45RU X 1200mm DEEP	01	01	00	02	02	00	02	04	00	00	117 Kg/EACH 258 LBS/EACH	137 Kg/EACH 303 LBS/EACH
S7829*T	NET-ACCESS S-TYPE CABINET 700mm X 48RU X 1200mm DEEP	01	01	00	02	02	00	02	04	00	00	123 Kg/EACH 273 LBS/EACH	144 Kg/EACH 318 LBS/EACH

\* DENOTES COLOR

"B" = BLACK

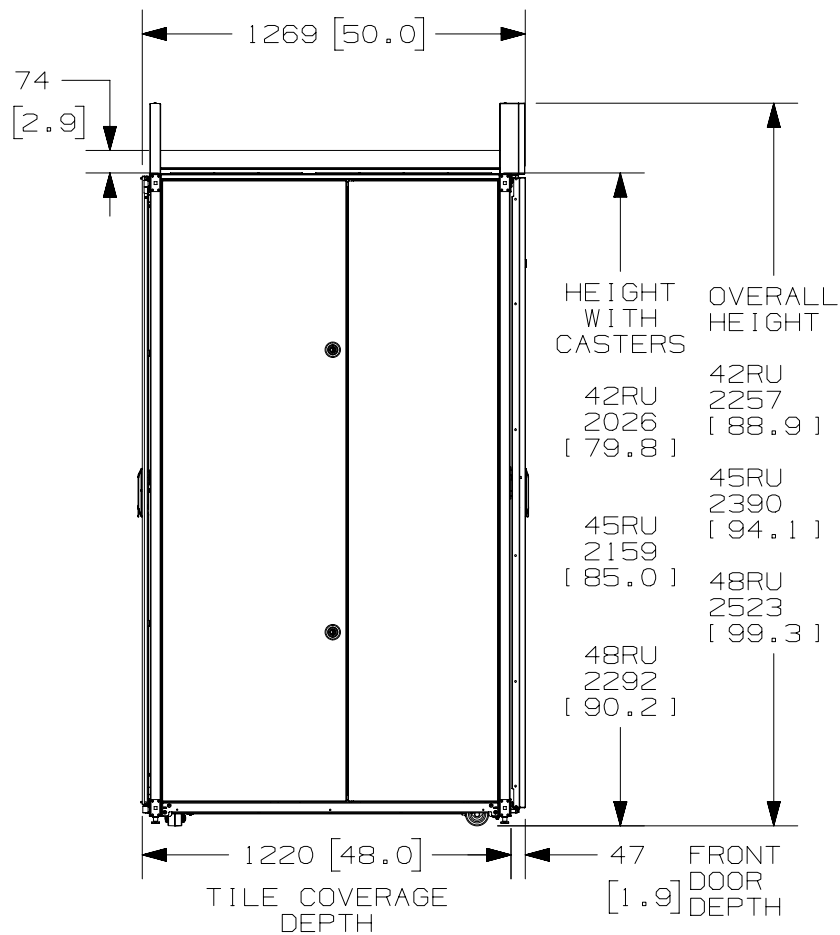
"W" = WHITE

							TITLE NET-ACCESS S-TYPE CABINET W/INTEGRAL CABINET TOP CABLE ROUTING SYSTEM 700mm WIDE X 1200mm DEEP FAMILY CUSTOMER DRAWING						
							ITEM REVISION NAME 12V352BB/01.PRT						
							DATASET FILE NAME 12V352BB_DC/01A.PRT						
											MATERIAL:  N/A		
01A	12-12-14	MDCA	ADP	TCN	SEE SHEET 1 OF 5 FOR REVISIONS	V09000BX	 THIRD ANGLE PROJECTION						
00A	4-15-13	PBS	JDW	JDWE	SEE SHEET 1 OF 5 FOR REVISIONS	12V352BB-DC							
REV	DATE	BY	CHK	APR	DESCRIPTION	ECN	DRAWN BY PBS	DATE 4-15-13	CHK	SCALE NONE	SHT 2 OF 5	SIZE A	

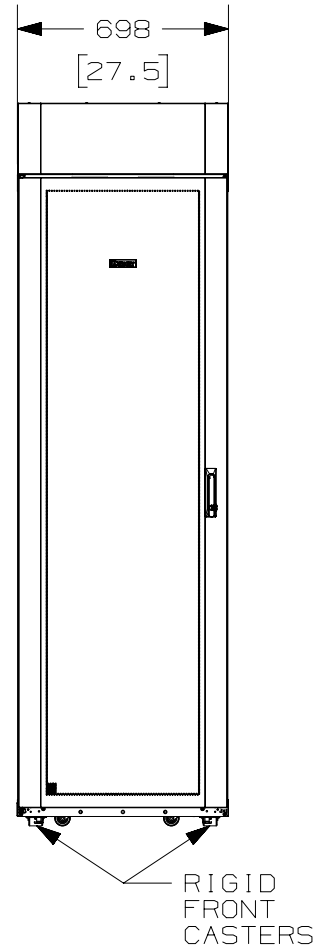
2

1

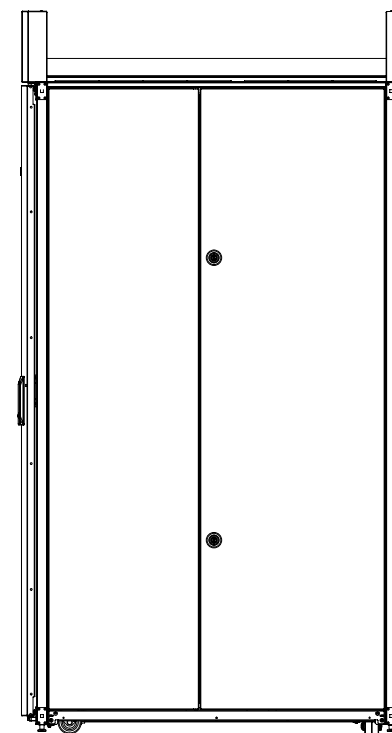
THIS COPY IS PROVIDED ON A RESTRICTED BASIS AND IS NOT TO BE USED IN ANY WAY DETRIMENTAL TO THE INTERESTS OF PANDUIT CORP.



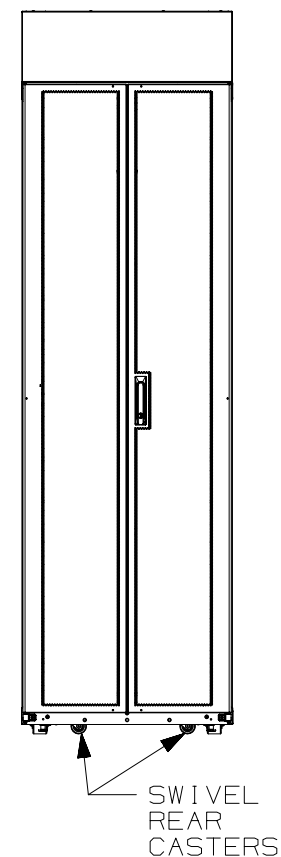
LEFT VIEW



FRONT VIEW



RIGHT VIEW



REAR VIEW

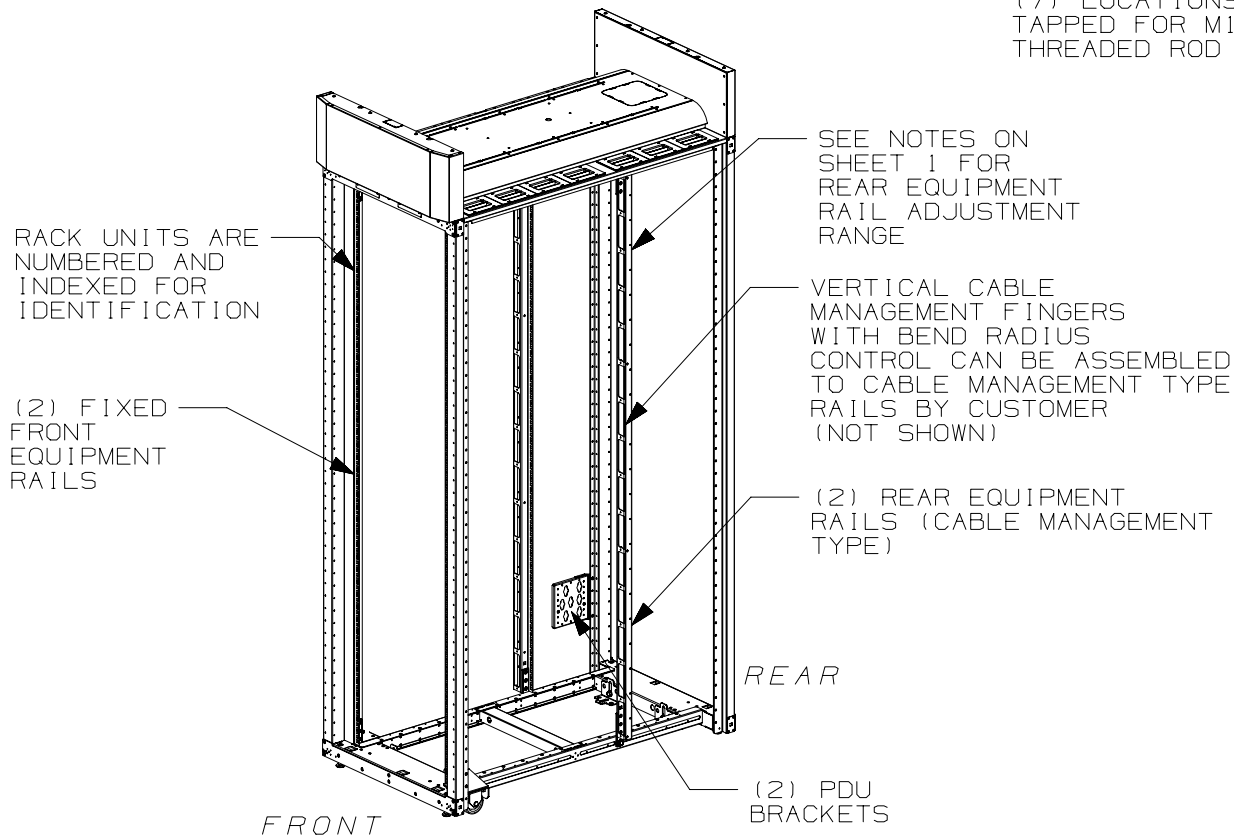
REV	DATE	BY	CHK	APR	DESCRIPTION	ECN
01A	12-12-14	MDCA	ADP	TCN	SEE SHEET 1 OF 5 FOR REVISIONS	V09000BX
00A	4-15-13	PBS	JDW	JDWE	SEE SHEET 1 OF 5 FOR REVISIONS	12V352BB-DC

TITLE NET-ACCESS S-TYPE CABINET W/INTEGRAL CABINET TOP CABLE ROUTING SYSTEM 700mm WIDE X 1200mm DEEP FAMILY CUSTOMER DRAWING		ITEM REVISION NAME 12V352BB/01.PRT		DATASET FILE NAME 12V352BB_DC/01A.PRT		MATERIAL: N/A	
DRAWN BY PBS		DATE 4-15-13		CHK NONE		SCALE NONE	
THIRD ANGLE PROJECTION		DRAWING NUMBER: 12V352BB-DC		SHT 3 OF 5		SIZE A	

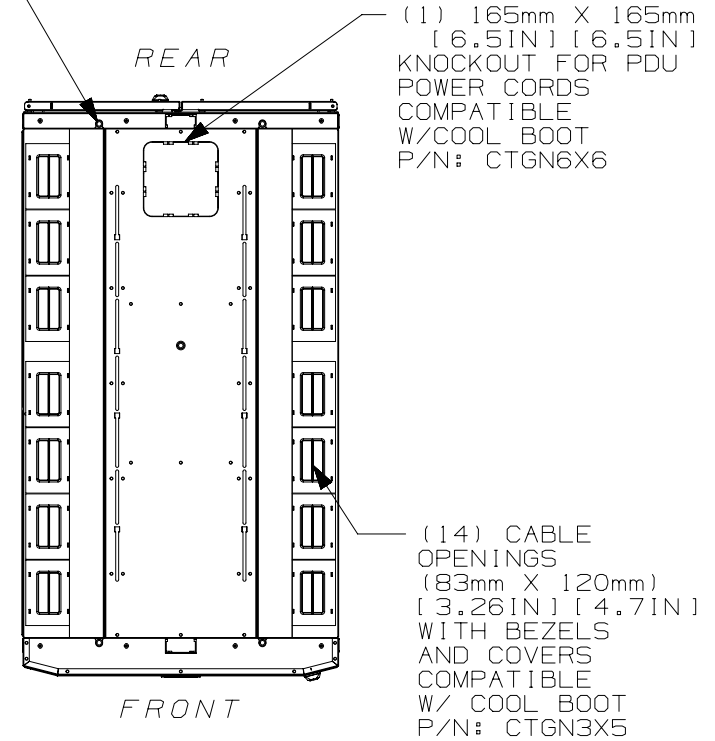
2

1

THIS COPY IS PROVIDED ON A RESTRICTED BASIS AND IS NOT TO BE USED IN ANY WAY DETRIMENTAL TO THE INTERESTS OF PANDUIT CORP.



(7) LOCATIONS TAPPED FOR M10 THREADED ROD



TOP VIEW

FRONT DOOR, REAR DOOR, AND SIDE PANELS NOT SHOWN

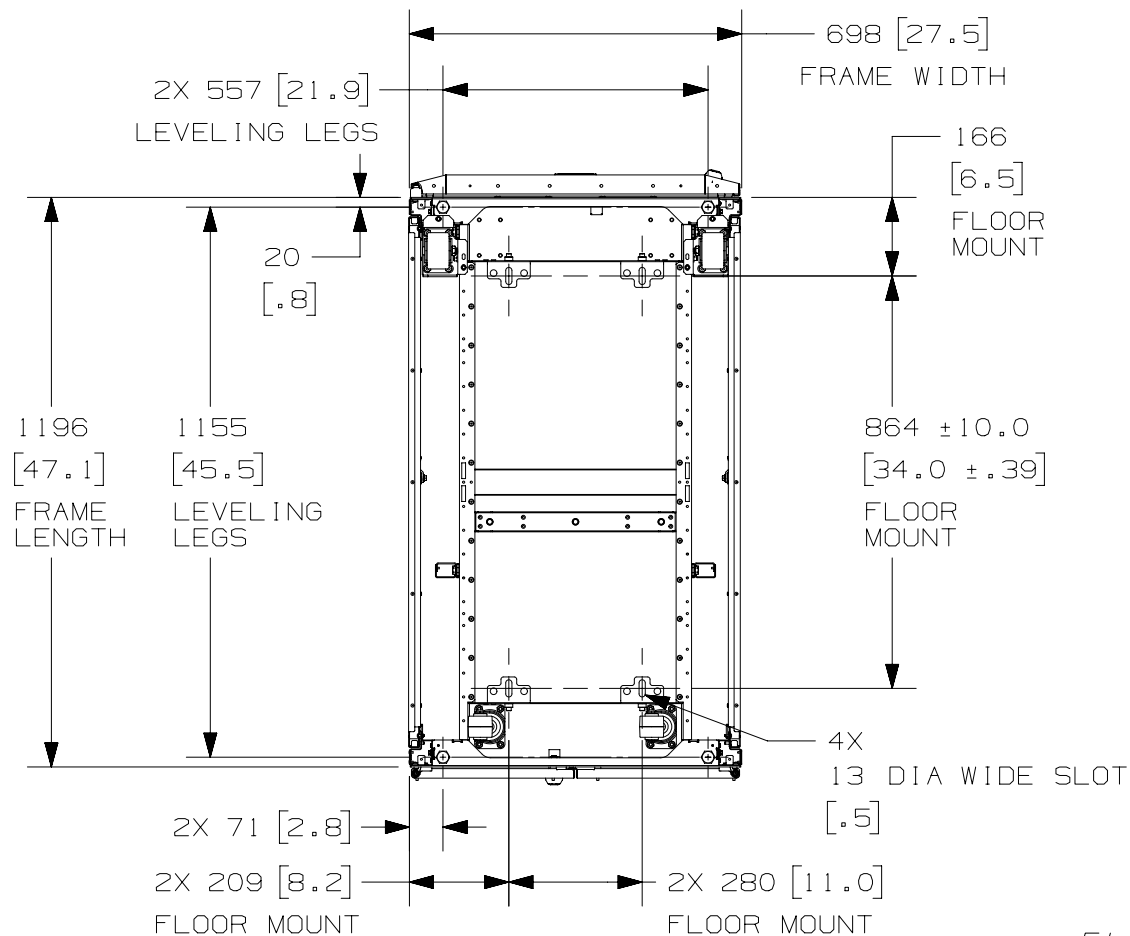
01A	12-12-14	MDCA	ADP	TCN	SEE SHEET 1 OF 5 FOR REVISIONS	V09000BX
00A	4-15-13	PBS	JDW	JDWE	SEE SHEET 1 OF 5 FOR REVISIONS	12V352BB-DC
REV	DATE	BY	CHK	APR	DESCRIPTION	ECN

TITLE NET-ACCESS S-TYPE CABINET W/INTEGRAL CABINET TOP CABLE ROUTING SYSTEM 700mm WIDE X 1200mm DEEP FAMILY CUSTOMER DRAWING	
ITEM REVISION NAME 12V352BB/01.PRT	<b>PANDUIT</b>
DATASET FILE NAME 12V352BB_DC/01A.PRT	
MATERIAL:  N/A	DRAWING NUMBER: 12V352BB-DC
THIRD ANGLE PROJECTION	
DRAWN BY PBS	DATE 4-15-13
CHK	SCALE NONE
SHT 4 OF 5	SIZE A

2

1

THIS COPY IS PROVIDED ON A RESTRICTED BASIS AND IS NOT TO BE USED IN ANY WAY DETRIMENTAL TO THE INTERESTS OF PANDUIT CORP.



REAR OF CABINET  
BOTTOM VIEW

FLOOR MOUNTING HOLE LOCATIONS -  
SOME PARTS REMOVED FOR CLARITY

TITLE  
NET-ACCESS S-TYPE CABINET W/INTEGRAL  
CABINET TOP CABLE ROUTING SYSTEM 700mm  
WIDE X 1200mm DEEP FAMILY  
CUSTOMER DRAWING

ITEM REVISION NAME  
12V352BB/01.PRT

DATASET FILE NAME  
12V352BB\_DC/01A.PRT

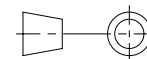
**PANDUIT**

MATERIAL:

N/A

DRAWING NUMBER:

12V352BB-DC



THIRD ANGLE  
PROJECTION

DRAWN BY  
PBS

DATE  
4-15-13

CHK

SCALE  
NONE

SHT 5 OF 5

SIZE  
A

01A	12-12-14	MDCA	ADP	TCN	SEE SHEET 1 OF 5 FOR REVISIONS	V09000BX
00A	4-15-13	PBS	JDW	JDWE	SEE SHEET 1 OF 5 FOR REVISIONS	12V352BB-DC
REV	DATE	BY	CHK	APR	DESCRIPTION	ECN

2

1