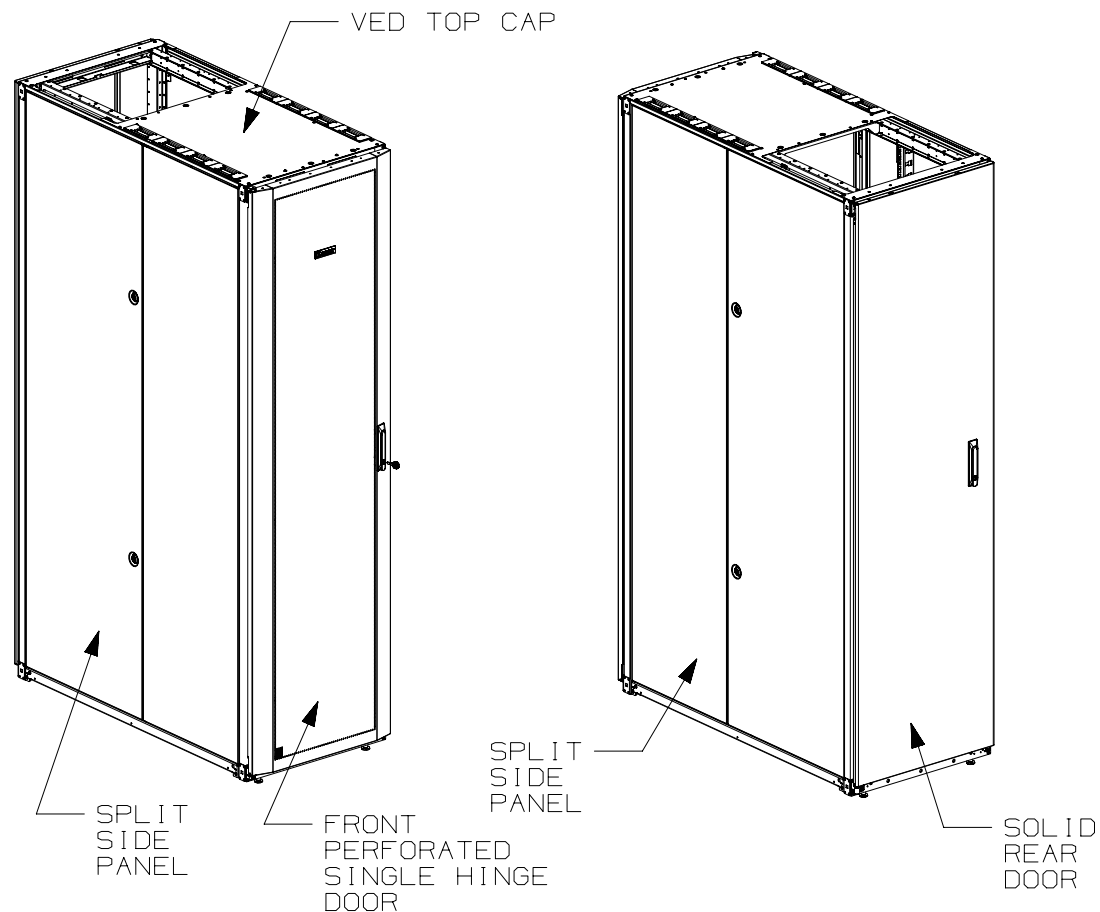


THIS COPY IS PROVIDED ON A RESTRICTED BASIS AND IS NOT TO BE USED IN ANY WAY DETRIMENTAL TO THE INTERESTS OF PANDUIT CORP.



1. VISIT OUR ON-LINE CATALOG AT [WWW.PANDUIT.COM](http://WWW.PANDUIT.COM) FOR A LIST OF CURRENT PARTS APPLICABLE FOR USE WITH THIS PRODUCT.
2. PRIMARY DIMENSIONS ARE IN MILLIMETERS.
3. RAIL ADJUSTMENT MEASUREMENTS ARE TAKEN FROM THE FRONT FACE OF EACH EQUIPMENT RAIL. INDEPENDENT ADJUSTABLE REAR EQUIPMENT MOUNTING RAILS (EIA) ADJUST FROM 65mm [2.6in] TO 435mm [17.1in] AND FROM 583mm [22.9in] TO 919mm [36.2in] WITH PDU BRACKETS AND CABLE MANAGEMENT FINGERS IN PLACE. REMOVING PDU BRACKETS AND OPTIONAL FINGERS INCREASES MAXIMUM E-RAIL SPAN TO 1065mm [41.9in].
4. CAN BE USED WITH ANY 19" EIA STANDARD COMPONENT IN ADDITION TO ALL PANDUIT HORIZONTAL CABLE MANAGEMENT AND PATCH PANEL PRODUCTS.
5. EIA UNIVERSAL STANDARD HOLE PROGRESSION ON EQUIPMENT RAILS  
15.88mm [.625in], 15.88mm [.625in],  
12.70mm [.5in], 15.88mm [.625in],  
15.88mm [.625in], 12.7mm [.5in]...ETC.
6. PARTS SUPPLIED:  
-BASE CABINET  
-FRONT PERFORATED SINGLE HINGE DOOR (SEE CHART ON SHEET 2)  
-SOLID REAR DOOR (SEE CHART ON SHEET 2)  
-SPLIT SIDE PANELS (SEE CHART ON SHEET 2)  
-CAGE NUT EQUIPMENT RAILS FRONT & REAR (SEE CHART ON SHEET 2)  
-PDU BRACKETS (SEE CHART ON SHEET 2)  
-(8) BEZELS AND BLANKS  
-CABINET HARDWARE KIT  
-INSTRUCTION SHEET
7. RACK UNIT SPACING NUMERALS ARE CLEARLY PRINTED ON EQUIPMENT MOUNTING RAILS.
8. FULLY BONDED STRUCTURE WHEN ASSEMBLED PER INSTRUCTIONS.
9. STATIC LOAD RATING. 1360 Kg (3000 LBS)
10. ROLLING LOAD RATING. 1133 Kg (2500 LBS)
11. SINGLE POINT GROUND LOCATIONS AT TOP AND BOTTOM OF CABINET.
12. ALL CABINET RAILS ARE INSTALLED NUMBERS UP.
13. MAXIMUM EQUIPMENT DEPTH, 1111mm [43.75"].

							TITLE NET-ACCESS S-TYPE VED READY CABINET NO CASTERS 600mm WIDE X 1200mm DEEP FAMILY CUSTOMER DRAWING					
							ITEM REVISION NAME 12V352CG/01			<div>PANDUIT</div>		
							DATASET FILE NAME 12V352CG_DC/01A					
										MATERIAL:  N/A		
01A	12-04-14	PBS	ADP	TCN	FLOOR MOUNT DIMENSIONS UPDATED		V09000BX			<div><div><div></div></div><div><div></div></div></div> <div>THIRD ANGLE PROJECTION</div>		
00A	7-08-14	LEE	ROJC	TCN	RELEASED TO PRODUCTION		12V352CG-DC					
REV	DATE	BY	CHK	APR	DESCRIPTION	ECN	DRAWN BY LEE	DATE 7-08-14	CHK ROJC	SCALE NONE	SHT 1 OF 1	SIZE A

THIS COPY IS PROVIDED ON A RESTRICTED BASIS AND IS NOT TO BE USED IN ANY WAY DETRIMENTAL TO THE INTERESTS OF PANDUIT CORP.

PART NO.	DESCRIPTION	SINGLE HINGE FRONT DOOR	SOLID REAR DOOR	SPLIT SIDE PANEL	FRONT CAGE NUT E-RAIL	REAR CAGE NUT FINGER MGMT E-RAIL	REAR CAGE NUT VERTICAL PATCH E-RAIL	STANDARD PDU BRACKETS	CASTERS	CABLE MGMT FINGERS	VERTICAL PATCHING	CABINET WEIGHT FULLY UNPACKAGED	CABINET WEIGHT SHIPPING WEIGHT
S6222*V9	NET-ACCESS S-TYPE VED READY CABINET 600mm X 42RU X 1200mm DEEP	01	01	02	02	02	00	02	00	00	00	121 Kg/EACH 265 LBS/EACH	141 Kg/EACH 310 LBS/EACH
S6522*V9	NET-ACCESS S-TYPE VED READY CABINET 600mm X 45RU X 1200mm DEEP	01	01	02	02	02	00	02	00	00	00	125 Kg/EACH 275 LBS/EACH	146 Kg/EACH 320 LBS/EACH
S6822*V9	NET-ACCESS S-TYPE VED READY CABINET 600mm X 48RU X 1200mm DEEP	01	01	02	02	02	00	02	00	00	00	130 Kg/EACH 285 LBS/EACH	150 Kg/EACH 330 LBS/EACH
S6229*V9	NET-ACCESS S-TYPE VED READY CABINET 600mm X 42RU X 1200mm DEEP	01	01	00	02	02	00	02	00	00	00	84 Kg/EACH 185 LBS/EACH	105 Kg/EACH 230 LBS/EACH
S6529*V9	NET-ACCESS S-TYPE VED READY CABINET 600mm X 45RU X 1200mm DEEP	01	01	00	02	02	00	02	00	00	00	87 Kg/EACH 192 LBS/EACH	108 Kg/EACH 237 LBS/EACH
S6829*V9	NET-ACCESS S-TYPE VED READY CABINET 600mm X 48RU X 1200mm DEEP	01	01	00	02	02	00	02	00	00	00	91 Kg/EACH 199 LBS/EACH	111 Kg/EACH 244 LBS/EACH

\* DENOTES COLOR

"B" = BLACK

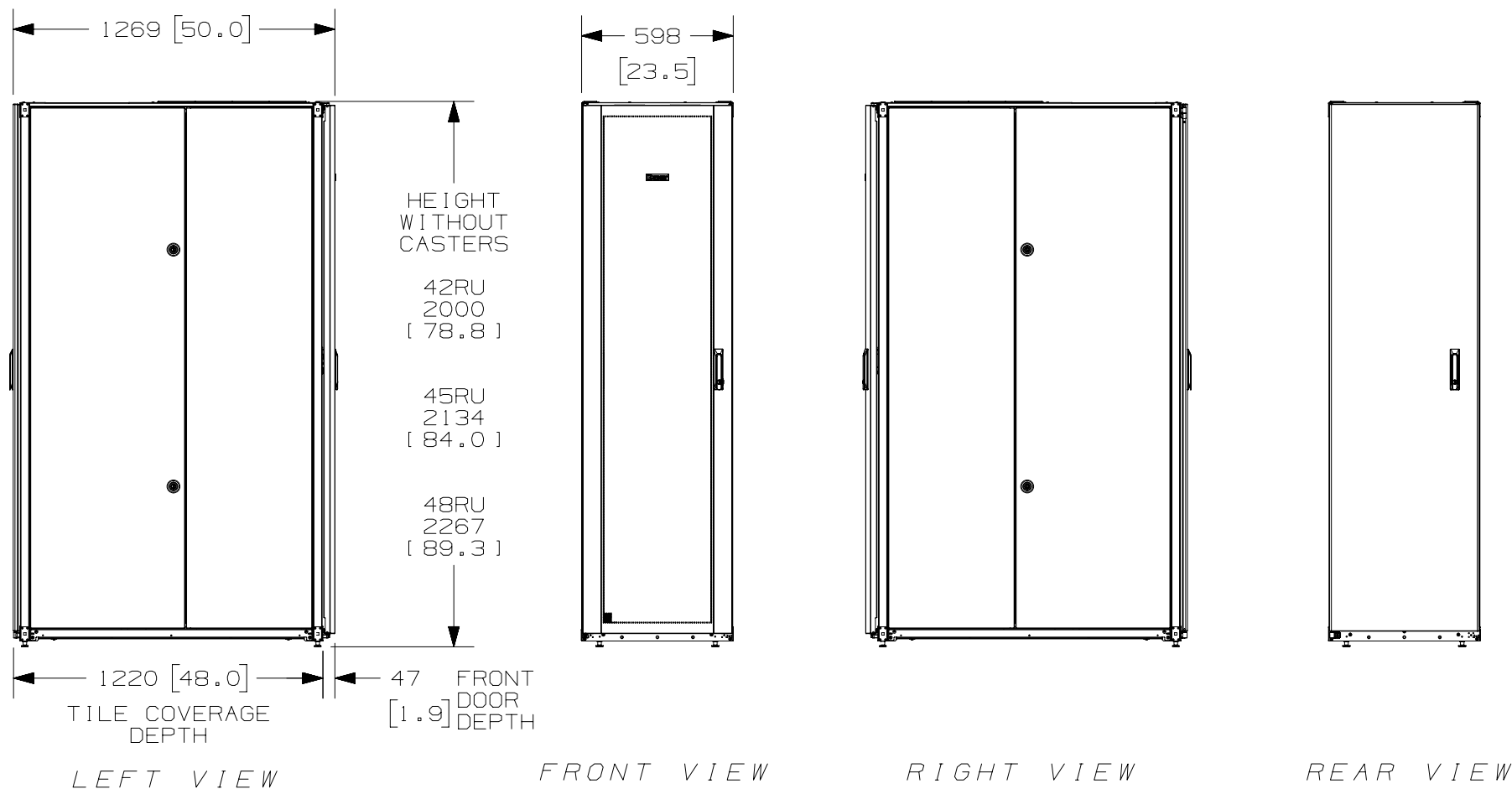
"W" = WHITE

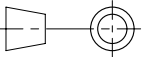
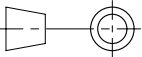
							TITLE NET-ACCESS S TYPE VED READY CABINET NO CASTERS 600mm WIDE X 1200mm DEEP FAMILY								
							CUSTOMER DRAWING								
							ITEM REVISION NAME 12V352CG/01.PRT				<div>PANDUIT</div>				
							DATASET FILE NAME 12V352CG_DC/01A.PRT								
											MATERIAL:  N/A				
01A	12-04-14	PBS	ADP	TCN	SEE SHEET 1 OF 5 FOR REVISIONS	V09000BX	<div><div><div></div><div></div></div><div>THIRD ANGLE PROJECTION</div></div>							DRAWING NUMBER: 12V352CG-DC	
00A	7-8-14	LEE	ROJC	TCN	SEE SHEET 1 OF 5 FOR REVISIONS	12V352CG-DC									
REV	DATE	BY	CHK	APR	DESCRIPTION	ECN	DRAWN BY LEE	DATE 7-8-14	CHK ROJC	SCALE NONE	SHT 2 OF 5		SIZE A		

2

1

THIS COPY IS PROVIDED ON A RESTRICTED BASIS AND IS NOT TO BE USED IN ANY WAY DETRIMENTAL TO THE INTERESTS OF PANDUIT CORP.



							TITLE NET-ACCESS S TYPE VED READY CABINET NO CASTERS 600mm WIDE X 1200mm DEEP FAMILY CUSTOMER DRAWING					<div>PANDUIT</div>
							ITEM REVISION NAME 12V352CG/01.PRT					
							DATASET FILE NAME 12V352CG_DC/01A.PRT					
							<div>THIRD ANGLE PROJECTION</div>					
01A	12-04-14	PBS	ADP	TCN	SEE SHEET 1 OF 5 FOR REVISIONS	V09000BX	<div>THIRD ANGLE PROJECTION</div>					MATERIAL:  N/A
00A	7-8-14	LEE	ROJC	TCN	SEE SHEET 1 OF 5 FOR REVISIONS	12V352CG-DC						DRAWING NUMBER: 12V352CG-DC
REV	DATE	BY	CHK	APR	DESCRIPTION	ECN	DRAWN BY LEE	DATE 7-8-14	CHK ROJC	SCALE NONE	SHT 3 OF 5	SIZE A

2

1

2

1

THIS COPY IS PROVIDED ON A RESTRICTED BASIS AND IS NOT TO BE USED IN ANY WAY DETRIMENTAL TO THE INTERESTS OF PANDUIT CORP.

RACK UNITS ARE  
NUMBERED AND  
INDEXED FOR  
IDENTIFICATION

(2) FIXED  
FRONT  
EQUIPMENT  
RAILS

SEE NOTES ON  
SHEET 1 FOR  
REAR EQUIPMENT  
RAIL ADJUSTMENT  
RANGE

VERTICAL CABLE  
MANAGEMENT FINGERS  
WITH BEND RADIUS  
CONTROL CAN BE ASSEMBLED  
TO CABLE MANAGEMENT TYPE  
RAILS BY CUSTOMER  
(NOT SHOWN)

(2) REAR EQUIPMENT  
RAILS  
CABLE MANAGEMENT TYPE

REAR

(2) PDU  
BRACKETS

FRONT

FRONT DOOR, REAR DOOR,  
AND SIDE PANELS NOT SHOWN

590 VED  
[23.2] WIDTH

REAR

610  
[24.0]  
VED  
DEPTH

609  
[24.0]

FRONT

TOP VIEW

(3) LOCATIONS  
TAPPED FOR M10  
THREADED ROD

(8) CABLE  
OPENINGS  
(33mm X 120mm)  
[1.3in] [4.7in]  
WITH BEZELS  
AND COVERS  
COMPATIBLE  
W/ COOL BOOT  
P/N: CTGN1X5

TITLE

NET-ACCESS S TYPE VED READY CABINET  
NO CASTERS 600mm WIDE X 1200mm DEEP FAMILY

CUSTOMER DRAWING

ITEM REVISION NAME

12V352CG/01.PRT

DATASET FILE NAME

12V352CG\_DC/01A.PRT

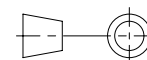
**PANDUIT**

MATERIAL:

N/A

DRAWING NUMBER:

12V352CG-DC



THIRD ANGLE  
PROJECTION

DRAWN BY

DATE

CHK

SCALE

LEE

7-8-14

ROJC

NONE

SHT 4 OF 5

SIZE

A

01A	12-04-14	PBS	ADP	TCN	SEE SHEET 1 OF 5 FOR REVISIONS	V09000BX	
00A	7-8-14	LEE	ROJC	TCN	SEE SHEET 1 OF 5 FOR REVISIONS	12V352CG-DC	
REV	DATE	BY	CHK	APR	DESCRIPTION	ECN	

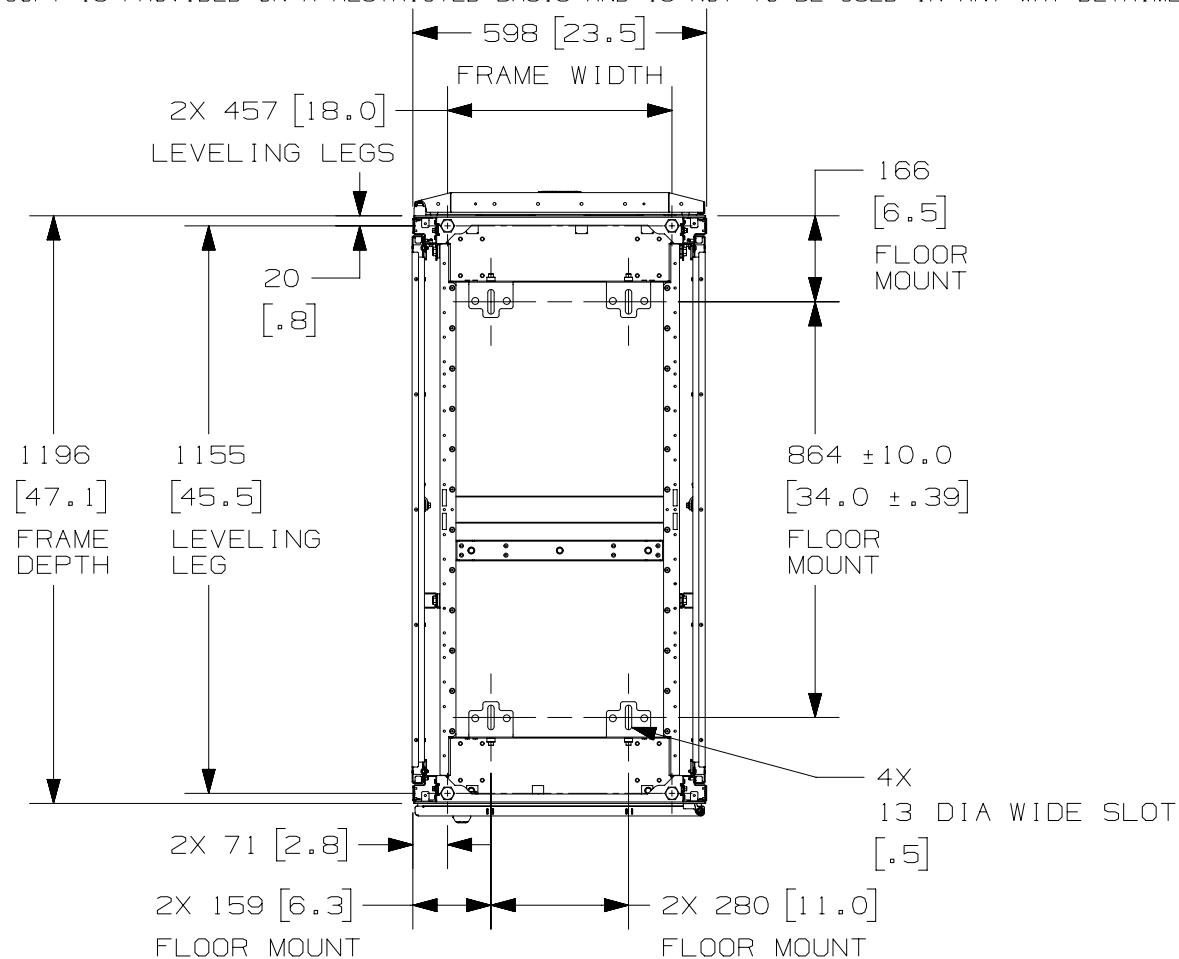
2

1

2


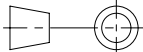
1

THIS COPY IS PROVIDED ON A RESTRICTED BASIS AND IS NOT TO BE USED IN ANY WAY DETRIMENTAL TO THE INTERESTS OF PANDUIT CORP.



REAR OF CABINET  
BOTTOM VIEW

FLOOR MOUNTING HOLE LOCATIONS -  
SOME PARTS REMOVED FOR CLARITY

TITLE				NET-ACCESS S TYPE VED READY CABINET NO CASTERS 600mm WIDE X 1200mm DEEP FAMILY					
				CUSTOMER DRAWING					
ITEM REVISION NAME									
12V352CG/01.PRT									
DATASET FILE NAME				MATERIAL:					
12V352CG_DC/01A.PRT									
 THIRD ANGLE PROJECTION				N/A					
				DRAWING NUMBER:					
				12V352CG-DC					
DRAWN BY		DATE		CHK		SCALE		SIZE	
LEE		7-8-14		ROJC		NONE		SHT 5 OF 5	
								A	