

THIS COPY IS PROVIDED ON A RESTRICTED BASIS AND IS NOT TO BE USED IN ANY WAY DETRIMENTAL TO THE INTERESTS OF PANDUIT CORP.

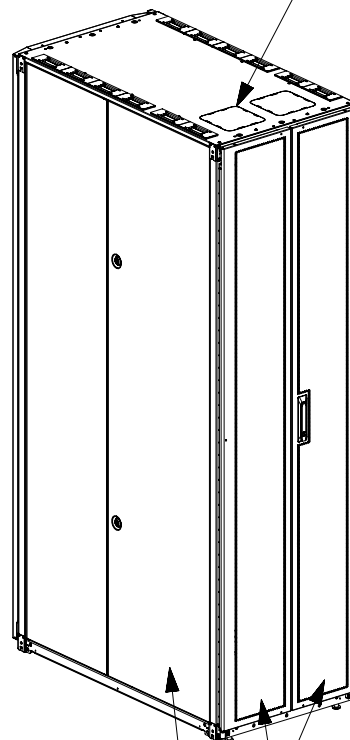
KNOCK-OUTS FOR
PDU POWER CORD

TOP CAP



FRONT
PERFORATED
SINGLE HINGE
DOOR

SPLIT SIDE PANEL



REAR
PERFORATED
SPLIT
DOORS

SPLIT SIDE PANEL

1. VISIT OUR ON-LINE CATALOG AT WWW.PANDUIT.COM FOR A LIST OF CURRENT PARTS APPLICABLE FOR USE WITH THIS PRODUCT.
2. PRIMARY DIMENSIONS ARE IN MILLIMETERS.
3. FACTORY SETTINGS:
 - FRONT FACE OF FRONT E-RAILS ARE 175mm [6.89in] FROM FRONT FACE OF FRAME.
 - FRONT FACE OF REAR E-RAILS ARE 412.75mm [16.25in] FROM FRONT FACE OF FRONT E-RAILS.
4. ADJUSTMENTS:
 - RAIL ADJUSTMENT MEASUREMENTS ARE TAKEN FROM THE FRONT FACE OF EACH EQUIPMENT RAIL.
 - FRONT E-RAILS CAN ADJUST AS FAR FORWARD AS 74mm [2.9in] FROM FRONT FACE OF FRAME.
 - WHEN FRONT E-RAILS ARE 74mm [2.9in] FROM FRONT FACE OF FRAME, REAR E-RAILS CAN ADJUST FROM 62mm [2.44in] TO 342mm [13.46in] AND FROM 506mm [19.92in] TO 750mm [29.53in] (896mm [35.27in] WITHOUT PDU's)
5. CAN BE USED WITH ANY 19" EIA STANDARD COMPONENT IN ADDITION TO ALL PANDUIT HORIZONTAL CABLE MANAGEMENT AND PATCH PANEL PRODUCTS.
6. EIA UNIVERSAL STANDARD HOLE PROGRESSION ON EQUIPMENT RAILS
15.88mm [.625in], 15.88mm [.625in], 12.70mm [.5in], 15.88mm [.625in], 15.88mm [.625in], 12.7mm [.5in]...ETC.
7. PARTS SUPPLIED:
 - BASE CABINET
 - FRONT PERFORATED SINGLE HINGE DOOR (SEE CHART ON SHEET 2)
 - REAR PERFORATED SPLIT DOOR (SEE CHART ON SHEET 2)
 - SPLIT SIDE PANELS (SEE CHART ON SHEET 2)
 - CAGE NUT UTILITY STYLE EQUIPMENT RAILS FRONT & REAR (SEE CHART ON SHEET 2)
 - CABLE MANAGEMENT FINGERS (SEE CHART ON SHEET 2)
 - CABINET HARDWARE KIT
 - INSTRUCTION SHEET
8. RACK UNIT SPACING NUMERALS ARE CLEARLY PRINTED ON EQUIPMENT MOUNTING RAILS.
9. FULLY BONDED STRUCTURE WHEN ASSEMBLED PER INSTRUCTIONS.
10. STATIC LOAD RATING. 1360 Kg (3000 LBS)
11. ROLLING LOAD RATING. 1133 Kg (2500 LBS)
12. SINGLE POINT GROUND LOCATIONS AT TOP AND BOTTOM OF CABINET.
13. ALL CABINET RAILS ARE INSTALLED NUMBERS UP.

TITLE

NET-ACCESS S TYPE UTILITY CABINET - NO
CASTERS 600mm WIDE X 1070mm DEEP FAMILY

CUSTOMER DRAWING

ITEM REVISION NAME

12V352CK/01.PRT

DATASET FILE NAME

12V352CK_DC/01A.PRT

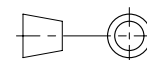
PANDUIT

MATERIAL:

N/A

DRAWING NUMBER:

12V352CK - DC



THIRD ANGLE
PROJECTION

DRAWN BY

MDCA

DATE

7-11-14

CHK

ROJC

SCALE

NONE

REV

DATE

BY

CHK

APR

DESCRIPTION

ECN

SHT 1 OF 5

SIZE

A

01A	11-18-14	PBS	ADP	TCN	FLOOR MOUNT DIMENSIONS UPDATED	V09000BX
00A	7-11-14	MDCA	ROJC	TCN	RELEASED TO PRODUCTION	12V352CK-DC
REV	DATE	BY	CHK	APR	DESCRIPTION	ECN

MDCA

DATE

7-11-14

CHK

ROJC

SCALE

NONE

REV

DATE

BY

CHK

APR

DESCRIPTION

ECN

SHT 1 OF 5

SIZE

A

THIS COPY IS PROVIDED ON A RESTRICTED BASIS AND IS NOT TO BE USED IN ANY WAY DETRIMENTAL TO THE INTERESTS OF PANDUIT CORP.

PART NO.	DESCRIPTION	SINGLE HINGE FRONT DOOR	SPLIT REAR DOOR	SPLIT SIDE PANEL	ADJUSTABLE FRONT UTILITY E-RAILS	REAR CAGE NUT FINGER MGMT E-RAILS	STANDARD PDU BRACKETS	CASTERS	CABLE MGMT FINGERS SET	CABINET WEIGHT FULLY UNPACKAGED	CABINET WEIGHT SHIPPING WEIGHT
S6212*A9	NET-ACCESS S-TYPE CABINET 600mm X 42RU X 1070mm DEEP	01	01	02	02	02	00	00	01	110 Kg/EACH 243 LBS/EACH	131 Kg/EACH 288 LBS/EACH
S6512*A9	NET-ACCESS S-TYPE CABINET 600mm X 45RU X 1070mm DEEP	01	01	02	02	02	00	00	01	115 Kg/EACH 253 LBS/EACH	135 Kg/EACH 298 LBS/EACH
S6812*A9	NET-ACCESS S-TYPE CABINET 600mm X 48RU X 1070mm DEEP	01	01	02	02	02	00	00	01	119 Kg/EACH 263 LBS/EACH	140 Kg/EACH 308 LBS/EACH
S6219*A9	NET-ACCESS S-TYPE CABINET 600mm X 42RU X 1070mm DEEP	01	01	00	02	02	00	00	01	77 Kg/EACH 170 LBS/EACH	98 Kg/EACH 215 LBS/EACH
S6519*A9	NET-ACCESS S-TYPE CABINET 600mm X 45RU X 1070mm DEEP	01	01	00	02	02	00	00	01	79 Kg/EACH 175 LBS/EACH	100 Kg/EACH 220 LBS/EACH
S6819*A9	NET-ACCESS S-TYPE CABINET 600mm X 48RU X 1070mm DEEP	01	01	00	02	02	00	00	01	82 Kg/EACH 180 LBS/EACH	102 Kg/EACH 225 LBS/EACH

* DENOTES COLOR

"B" = BLACK

"W" = WHITE

TITLE

NET-ACCESS S TYPE UTILITY CABINET - NO
CASTERS 600mm WIDE X 1070mm DEEP FAMILY

CUSTOMER DRAWING

ITEM REVISION NAME

12V352CK/01.PRT

DATASET FILE NAME

12V352CK_DC/01A.PRT

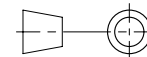
PANDUIT

MATERIAL:

N/A

DRAWING NUMBER:

12V352CK - DC



THIRD ANGLE
PROJECTION

DRAWN BY

MDCA

DATE

7-11-14

CHK

ROJC

SCALE

NONE

SHT 2 OF 5

SIZE

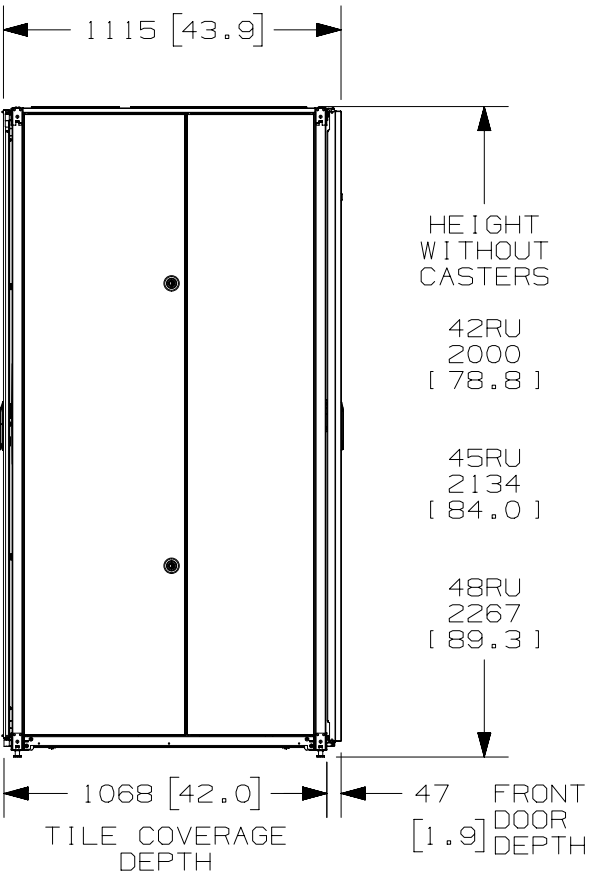
A

2

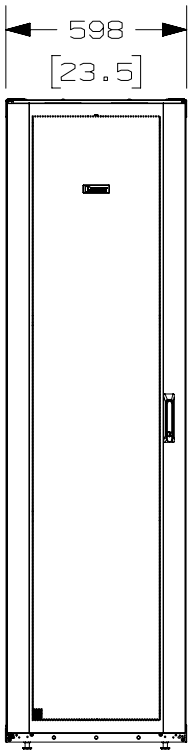
1

THIS COPY IS PROVIDED ON A RESTRICTED BASIS AND IS NOT TO BE USED IN ANY WAY DETRIMENTAL TO THE INTERESTS OF PANDUIT CORP.

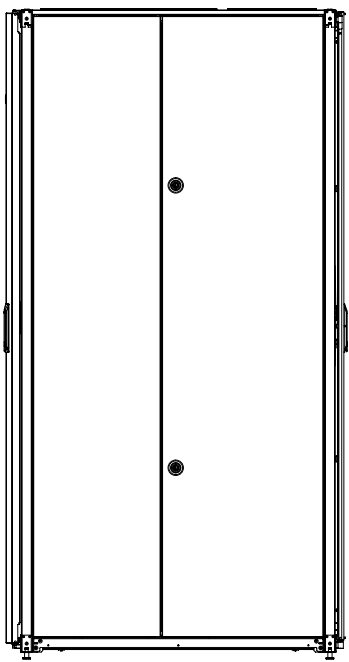
B



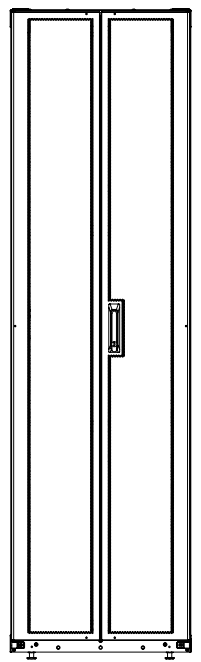
LEFT VIEW



FRONT VIEW



RIGHT VIEW



REAR VIEW

B



A

01A	11-18-14	PBS	ADP	TCN	SEE SHEET 1 OF 5 FOR REVISIONS	V09000BX
00A	7-11-14	MDCA	ROJC	TCN	SEE SHEET 1 OF 5 FOR REVISIONS	12V352CK-DC
REV	DATE	BY	CHK	APR	DESCRIPTION	ECN

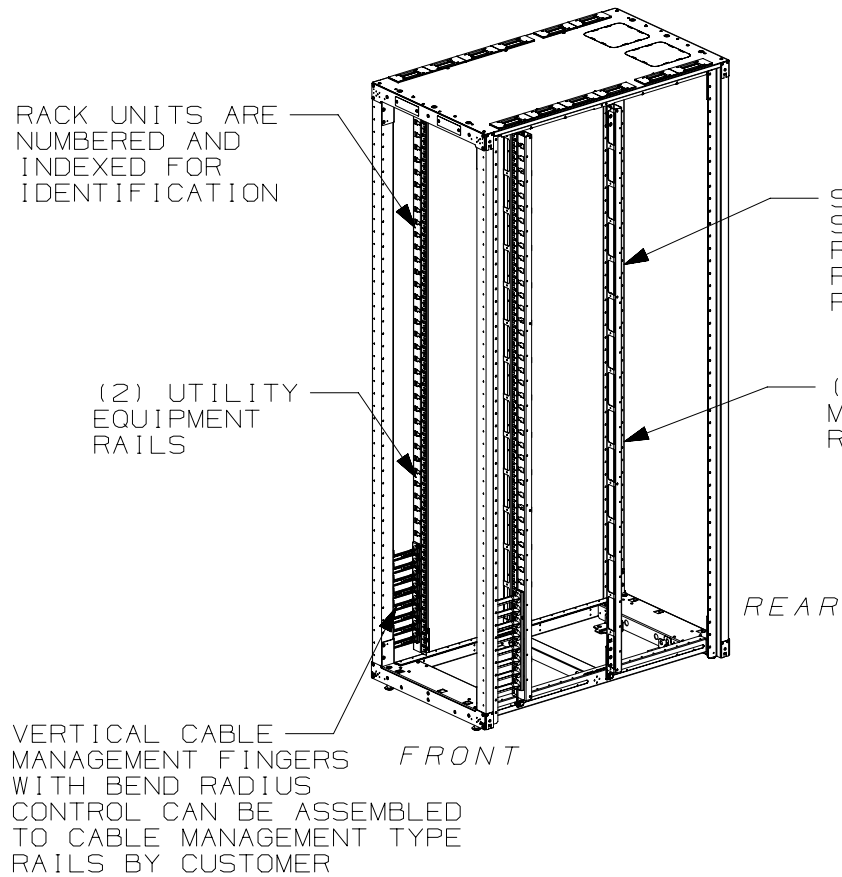
TITLE	
NET-ACCESS S TYPE UTILITY CABINET - NO CASTERS 600mm WIDE X 1070mm DEEP FAMILY	
CUSTOMER DRAWING	
ITEM REVISION NAME 12V352CK/01.PRT	
DATASET FILE NAME 12V352CK_DC/01A.PRT	
MATERIAL: N/A	
DRAWING NUMBER: 12V352CK-DC	
DRAWN BY MDCA	DATE 7-11-14
CHK ROJC	SCALE NONE
THIRD ANGLE PROJECTION	
SHT 3 OF 5	
SIZE A	

A

2

1

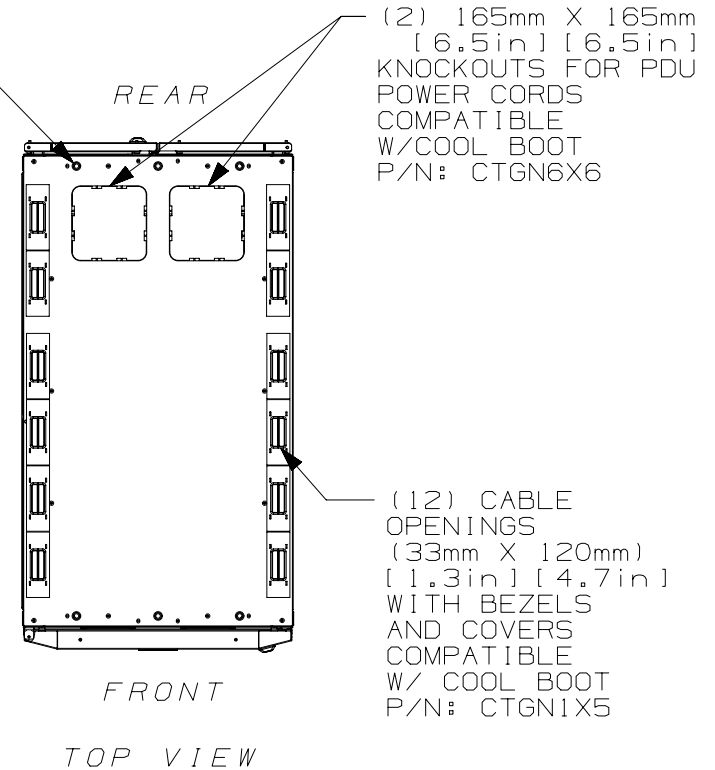
THIS COPY IS PROVIDED ON A RESTRICTED BASIS AND IS NOT TO BE USED IN ANY WAY DETRIMENTAL TO THE INTERESTS OF PANDUIT CORP.



(6) LOCATIONS TAPPED FOR M10 THREADED ROD

SEE NOTES ON SHEET 1 FOR REAR EQUIPMENT RAIL ADJUSTMENT RANGE

(2) VERTICAL CABLE MANAGEMENT TYPE REAR EQUIPMENT RAILS



FRONT DOOR, REAR DOOR, AND SIDE PANELS NOT SHOWN

TITLE

NET-ACCESS S TYPE UTILITY CABINET - NO CASTERS 600mm WIDE X 1070mm DEEP FAMILY

CUSTOMER DRAWING

ITEM REVISION NAME

12V352CK/01.PRT

DATASET FILE NAME

12V352CK_DC/01A.PRT

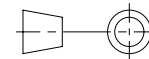
PANDUIT

MATERIAL:

N/A

DRAWING NUMBER:

12V352CK - DC



THIRD ANGLE PROJECTION

DRAWN BY

DATE

CHK

SCALE

MDCA

7-11-14

ROJC

NONE

SHT 4 OF 5

SIZE

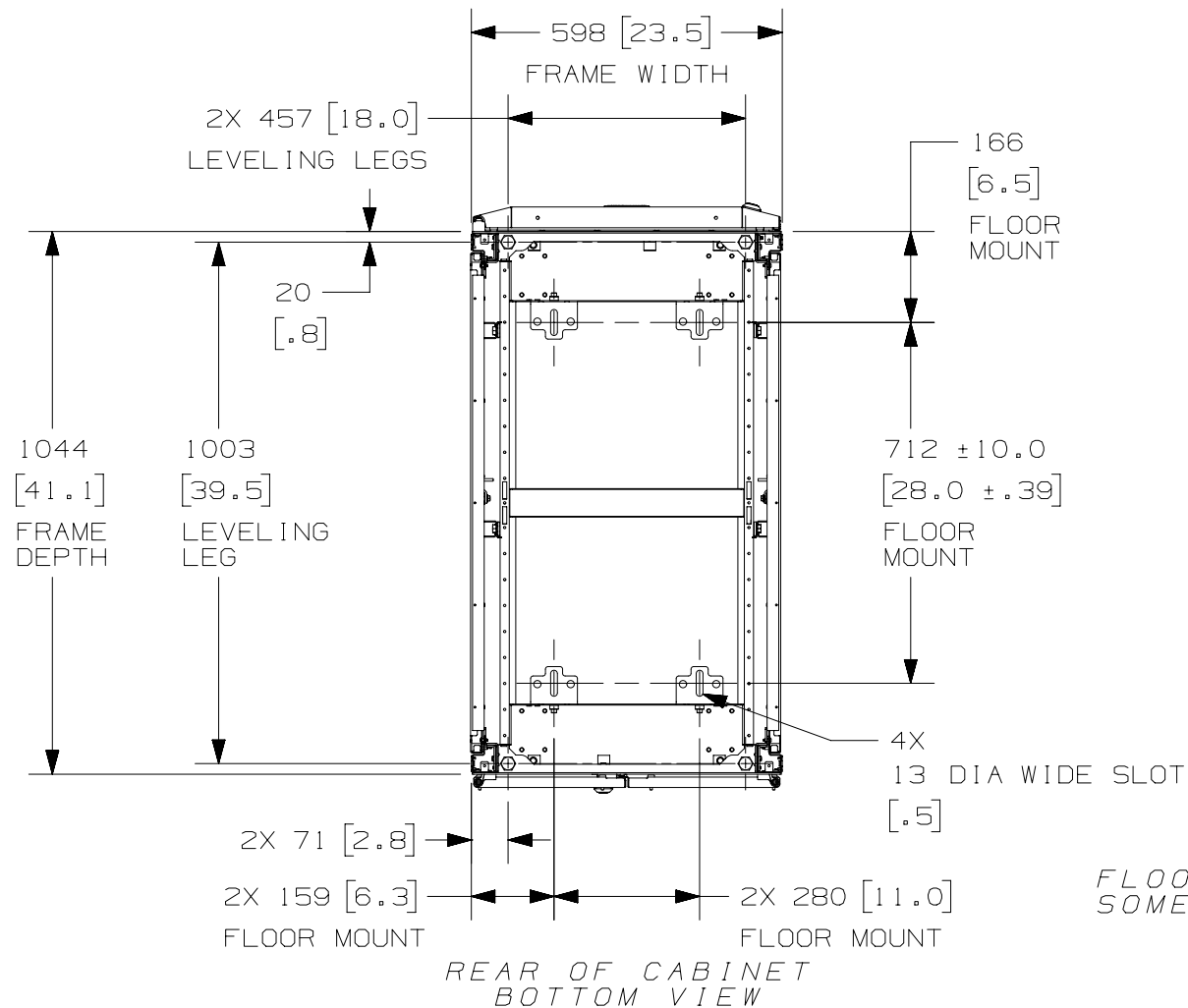
A

01A	11-18-14	PBS	ADP	TCN	SEE SHEET 1 OF 5 FOR REVISIONS	V09000BX	
00A	7-11-14	MDCA	ROJC	TCN	SEE SHEET 1 OF 5 FOR REVISIONS	12V352CK - DC	
REV	DATE	BY	CHK	APR	DESCRIPTION	ECN	

2


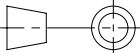
1

THIS COPY IS PROVIDED ON A RESTRICTED BASIS AND IS NOT TO BE USED IN ANY WAY DETRIMENTAL TO THE INTERESTS OF PANDUIT CORP.



FLOOR MOUNTING HOLE LOCATIONS -
SOME PARTS REMOVED FOR CLARITY

01A	11-18-14	PBS	ADP	TCN	SEE SHEET 1 OF 5 FOR REVISIONS	V09000BX	
00A	7-11-14	MDCA	ROJC	TCN	SEE SHEET 1 OF 5 FOR REVISIONS	12V352CK-DC	
REV	DATE	BY	CHK	APR	DESCRIPTION	ECN	

TITLE				NET-ACCESS S TYPE UTILITY CABINET - NO CASTERS 600mm WIDE X 1070mm DEEP FAMILY	
CUSTOMER DRAWING					
ITEM REVISION NAME		12V352CK/01.PRT			
DATASET FILE NAME		12V352CK_DC/01A.PRT			
		THIRD ANGLE PROJECTION		MATERIAL:	
				N/A	
				DRAWING NUMBER:	
		12V352CK - DC			
DRAWN BY	DATE	CHK	SCALE	SIZE	
MDCA	7-11-14	ROJC	NONE	SHT 5 OF 5	
				A	

2

1