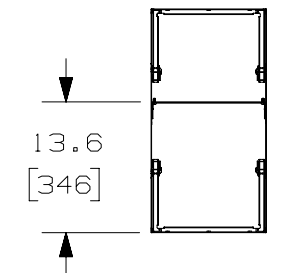


THIS COPY IS PROVIDED ON A RESTRICTED BASIS AND IS NOT TO BE USED IN ANY WAY DETRIMENTAL TO THE INTERESTS OF PANDUIT CORP.

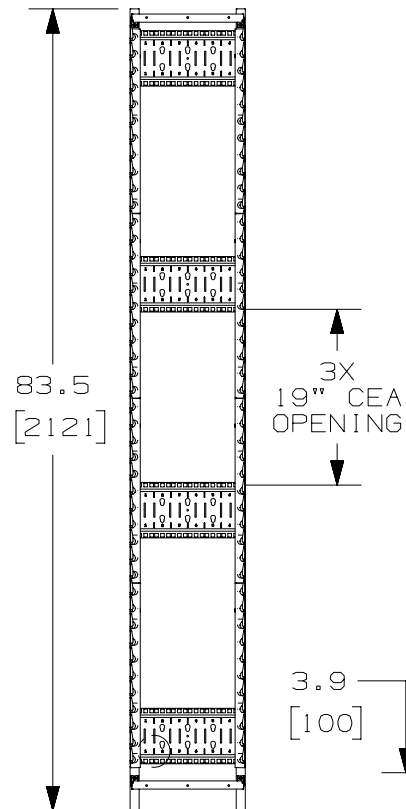
B

←

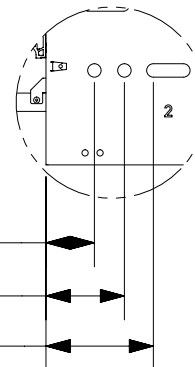
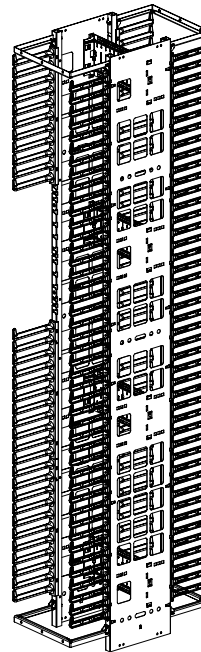
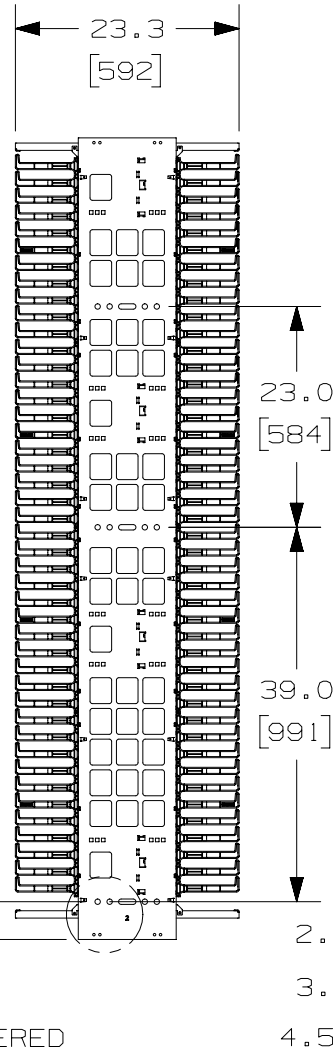
A



FINGER SECTIONS
FIELD INSTALLED
AND REMOVABLE



"X"RU SPACES NUMBERED




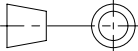
PANDUIT P/N	"W"	"X"	WEIGHT
PEV6B1	6.0	2	48.79 LBS/EACH (22.13 KG/EACH)
PEV8B1	8.0	3	49.86 LBS/EACH (22.61 KG/EACH)
PEV10B1	10.0	4	50.82 LBS/EACH (23.05 KG/EACH)
PEV12B1	12.0	6	51.84 LBS/EACH (23.51 KG/EACH)

B

NOTES:

- VISIT OUR ON-LINE CATALOG AT WWW.PANDUIT.COM FOR A CURRENT LIST OF PRODUCTS APPLICABLE FOR USE WITH THIS PART.
- COMPONENTS: (1) DUAL-SIDE VERTICAL MANAGER
(1) HARDWARE KIT
(8) LEFT FINGERS
(8) RIGHT FINGERS
(4) DOOR BRACKET BASES
- CAN BE USED WITH ANY 19 OR 23 INCH EIA STANDARD RACK.
- 3 ROWS OF "X"RU 19" CEA OPENINGS.
- DOOR SOLD SEPARATELY.
- DIMENSIONS IN PARENTHESIS ARE METRIC.
- ALL DIMENSIONS ARE REFERENCE ONLY.

A

TITLE				
PATCHRUNNER HIGH CAPACITY VERTICAL MANAGER, DUAL SIDED (PEV*B1)				
CONTROL DRAWING				
ITEM REVISION NAME				
11V260AQ/00				
DATASET FILE NAME			MATERIAL:	
11V260AQ_DC/00A				
UNLESS OTHERWISE SPECIFIED, DIMENSIONAL TOLERANCES ARE: IN (mm)			BACKBONE: STEEL FINGERS: ABS	
 THIRD ANGLE PROJECTION			DRAWING NUMBER:	
			11V260AQ	
DRAWN BY	DATE	CHK	SCALE	SIZE
FGR	9/18/13	BAME	NONE	A
			SHT 1 OF 1	

00A	9/18/13	FGR	BAME	CMK	INITIAL RELEASE	11V260AQ
REV	DATE	BY	CHK	APR	DESCRIPTION	ECN