

THIS COPY IS PROVIDED ON A RESTRICTED BASIS AND IS NOT TO BE USED IN ANY WAY DETRIMENTAL TO THE INTERESTS OF PANDUIT CORP.

KNOCK-OUT FOR
PDU POWER CORD

INTEGRAL
CABINET TOP
CABLE ROUTING
SYSTEM

DUAL HINGE
PERFORATED
FRONT DOOR

SPLIT SIDE PANEL

REAR
PERFORATED
SPLIT DOOR

SPLIT SIDE PANEL

1. VISIT OUR ON-LINE CATALOG AT WWW.PANDUIT.COM FOR A LIST OF CURRENT PARTS APPLICABLE FOR USE WITH THIS PRODUCT.
2. PRIMARY DIMENSIONS ARE IN MILLIMETERS.
3. INDEPENDENT ADJUSTABLE REAR EQUIPMENT MOUNTING RAILS (EIA) ADJUST FROM 130mm [5.1in] TO 327mm [12.87in] AND FROM 412mm [16.22in] TO 599mm [23.58in]. WITH NO FINGERS OR PDU'S, 761mm [29.96in] TO 812mm [31.96in].
4. CAN BE USED WITH ANY 19" EIA STANDARD COMPONENT IN ADDITION TO ALL PANDUIT HORIZONTAL CABLE MANAGEMENT AND PATCH PANEL PRODUCTS.
5. EIA UNIVERSAL STANDARD HOLE PROGRESSION ON EQUIPMENT RAILS 15.88mm [.625in], 15.88mm [.625in], 12.70mm [.5in], 15.88mm [.625in], 15.88mm [.625in], 12.7mm [.5in]...ETC.
6. PARTS SUPPLIED:
-BASE CABINET
OPTIONAL COMPONENTS:
-DUAL HINGE PERFORATED FRONT DOOR (SEE CHART ON SHEET 2)
-PERFORATED REAR SPLIT DOORS (SEE CHART ON SHEET 2)
-CAGE NUT EQUIPMENT RAILS FRONT & REAR (SEE CHART ON SHEET 2)
-SPLIT SIDE PANELS (SEE CHART ON SHEET 2)
-VERTICAL CABLE MANAGEMENT FINGERS (SEE CHART ON SHEET 2)
-CABINET HARDWARE KIT
-INSTRUCTION SHEET
7. RACK UNIT SPACING NUMERALS ARE CLEARLY PRINTED ON EQUIPMENT MOUNTING RAILS.
8. FULLY BONDED STRUCTURE WHEN ASSEMBLED PER INSTRUCTIONS.
9. STATIC LOAD RATING. 1360 Kg (3000 LBS)
10. ROLLING LOAD RATING. 1133 Kg (2500 LBS)
11. SINGLE POINT GROUND LOCATIONS AT TOP AND BOTTOM OF CABINET.
12. ALL CABINET RAILS ARE INSTALLED NUMBERS UP.
13. MAXIMUM EQUIPMENT DEPTH, 840mm [33.06].

TITLE

NET-ACCESS N TYPE CABINET WITH INTEGRAL
CABINET TOP CABLE ROUTING SYSTEM AND CAGE
NUT E-RAILS 800mm WIDE X 1070mm DEEP FAMILY
CUSTOMER DRAWING

ITEM REVISION NAME

12V352CS/01.PRT

DATASET FILE NAME

12V352CS_DC/01A.PRT

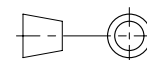
PANDUIT

MATERIAL:

N/A

DRAWING NUMBER:

12V352CS-DC



THIRD ANGLE
PROJECTION

DRAWN BY

DATE

CHK

SCALE

PBS

7-14-14

ROJC

NONE

SHT 1 OF 5

SIZE

A

REV	DATE	BY	CHK	APR	DESCRIPTION	ECN
01A	12-09-14	PBS	ADP	TCN	FLOOR MOUNT DIMENSIONS UPDATED	V09000BX
00B	8-27-14	PBS	ROJC	TCN	UPDATED VIEWS	12V352CS-DC
00A	7-14-14	PBS	ROJC	TCN	RELEASED TO PRODUCTION	12V352CS-DC


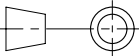
THIS COPY IS PROVIDED ON A RESTRICTED BASIS AND IS NOT TO BE USED IN ANY WAY DETRIMENTAL TO THE INTERESTS OF PANDUIT CORP.

PART NO.	DESCRIPTION	DUAL HINGE DOOR	SPLIT DOOR	SPLIT SIDE PANEL	CAGE NUT E-RAIL (2-SETS)	TAPPED E-RAIL (2-SETS)	CABLE MANAGEMENT FINGERS SET	CABINET WEIGHT FULLY UNPACKAGED	CABINET WEIGHT SHIPPING WEIGHT
N8212*TC	NET-ACCESS N-TYPE CABINET 42RUX1070mm DEEP	01	01	02	01	00	02	144 Kg/EACH 318 LBS/EACH	165 Kg/EACH 363 LBS/EACH
N8512*TC	NET-ACCESS N-TYPE CABINET 45RUX1070mm DEEP	01	01	02	01	00	02	150 Kg/EACH 332 LBS/EACH	171 Kg/EACH 377 LBS/EACH
N8812*TC	NET-ACCESS N-TYPE CABINET 48RUX1070mm DEEP	01	01	02	01	00	02	159 Kg/EACH 350 LBS/EACH	179 Kg/EACH 395 LBS/EACH
N8219*TC	NET-ACCESS N-TYPE CABINET 42RUX1070mm DEEP	01	01	00	01	00	02	106 Kg/EACH 235 LBS/EACH	127 Kg/EACH 280 LBS/EACH
N8519*TC	NET-ACCESS N-TYPE CABINET 45RUX1070mm DEEP	01	01	00	01	00	02	113 Kg/EACH 250 LBS/EACH	134 Kg/EACH 295 LBS/EACH
N8819*TC	NET-ACCESS N-TYPE CABINET 48RUX1070mm DEEP	01	01	00	01	00	02	120 Kg/EACH 265 LBS/EACH	141 Kg/EACH 310 LBS/EACH

* DENOTES COLOR

"B" = BLACK

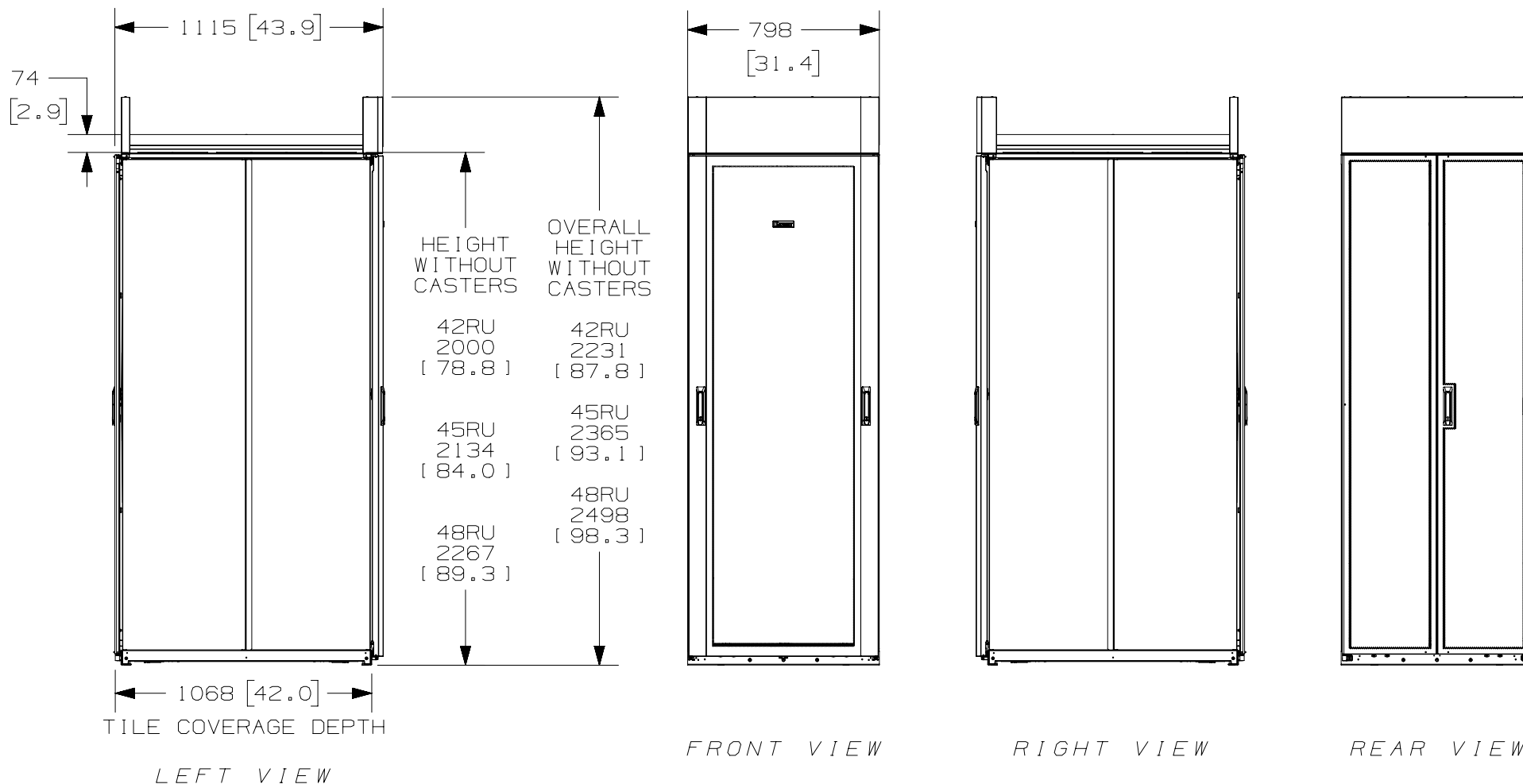
"W" = WHITE

							TITLE NET-ACCESS N TYPE CABINET WITH INTEGRAL CABINET TOP CABLE ROUTING SYSTEM AND CAGE NUT E-RAILS 800mm WIDE X 1070mm DEEP FAMILY CUSTOMER DRAWING							
							ITEM REVISION NAME 12V352CS/01.PRT							
							DATASET FILE NAME 12V352CS_DC/01A.PRT							
							 THIRD ANGLE PROJECTION							
01A	12-09-14	PBS	ADP	TCN	SEE SHEET 1 OF 5 FOR REVISIONS	V09000BX					MATERIAL: N/A			
00B	8-27-14	PBS	ROJC	TCN	SEE SHEET 1 OF 5 FOR REVISIONS	12V352CS-DC					DRAWING NUMBER: 12V352CS-DC			
00A	7-14-14	PBS	ROJC	TCN	SEE SHEET 1 OF 5 FOR REVISIONS	12V352CS-DC					SHT 2 OF 5			
REV	DATE	BY	CHK	APR	DESCRIPTION	ECN	DRAWN BY PBS	DATE 7-14-14	CHK ROJC	SCALE NONE	SIZE A			

2

1

THIS COPY IS PROVIDED ON A RESTRICTED BASIS AND IS NOT TO BE USED IN ANY WAY DETRIMENTAL TO THE INTERESTS OF PANDUIT CORP.



A

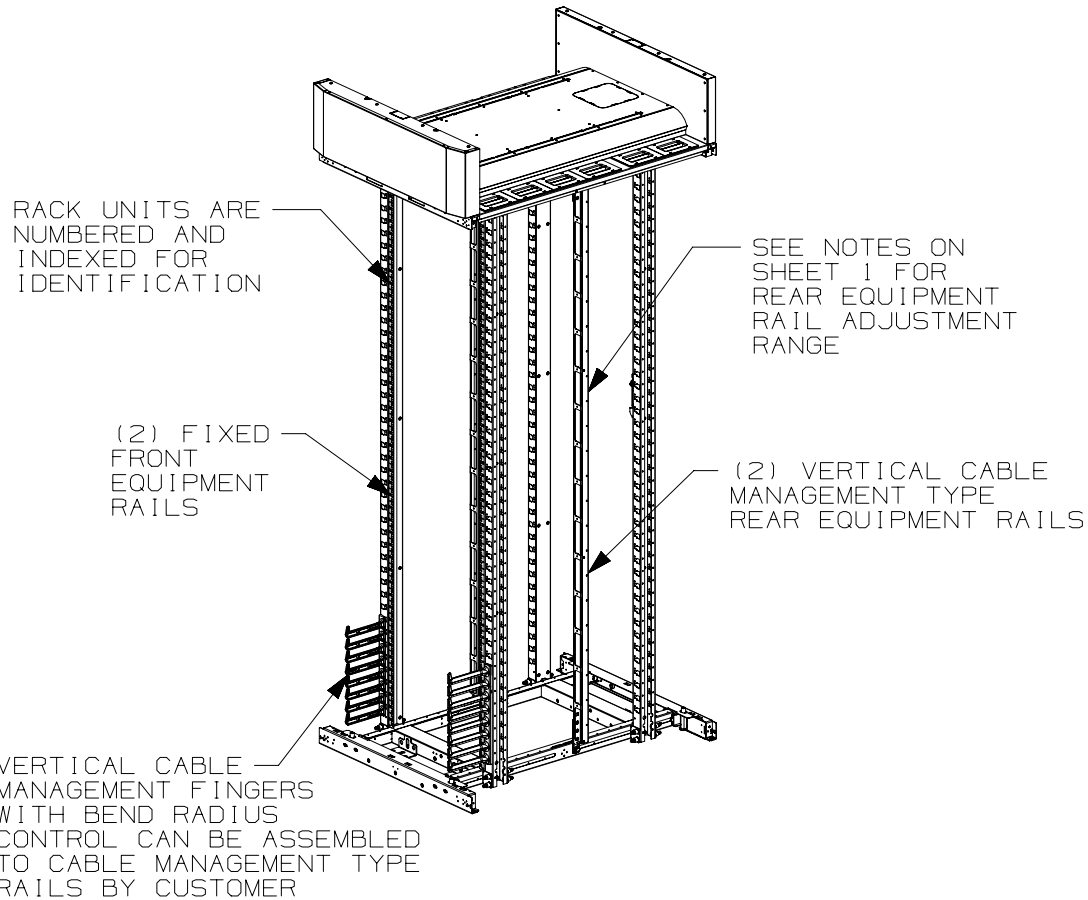
A

							TITLE					
							NET-ACCESS N TYPE CABINET WITH INTEGRAL CABINET TOP CABLE ROUTING SYSTEM AND CAGE NUT E-RAILS 800mm WIDE X 1070mm DEEP FAMILY					
							CUSTOMER DRAWING					
							ITEM REVISION NAME 12V352CS/01.PRT		<div>PANDUIT</div>			
							DATASET FILE NAME 12V352CS_DC/01A.PRT					
01A	12-09-14	PBS	ADP	TCN	SEE SHEET 1 OF 5 FOR REVISIONS	V09000BX	<div><div><div></div><div></div></div><div>THIRD ANGLE PROJECTION</div></div>		MATERIAL:			
00B	8-27-14	PBS	ROJC	TCN	SEE SHEET 1 OF 5 FOR REVISIONS	12V352CS-DC			N/A			
00A	7-14-14	PBS	ROJC	TCN	SEE SHEET 1 OF 5 FOR REVISIONS	12V352CS-DC			DRAWING NUMBER: 12V352CS-DC			
REV	DATE	BY	CHK	APR	DESCRIPTION	ECN	DRAWN BY PBS	DATE 7-14-14	CHK ROJC	SCALE NONE	SHT 3 OF 5	SIZE A

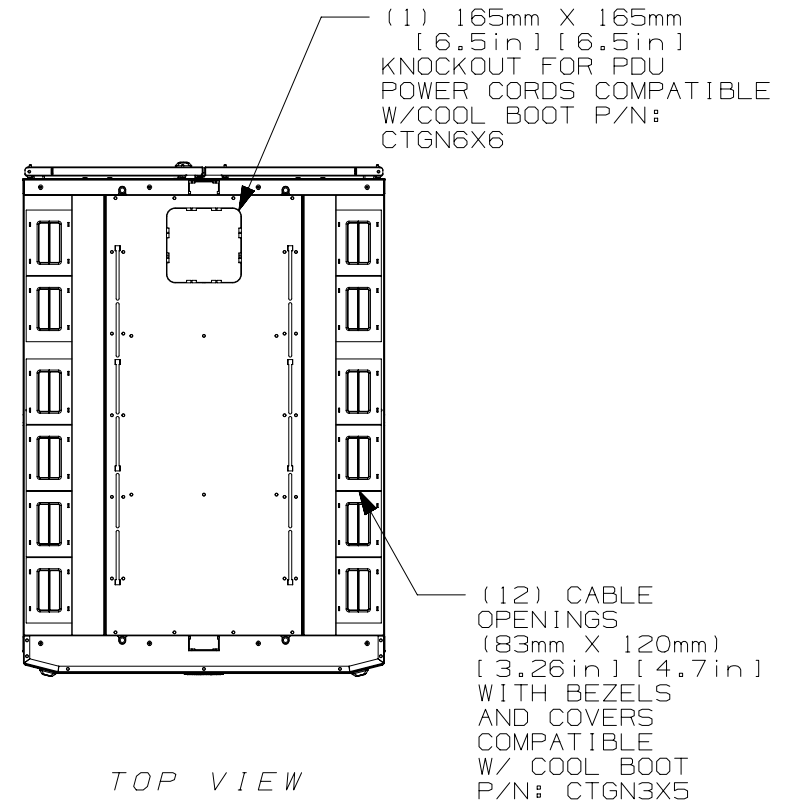
2

1


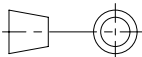
THIS COPY IS PROVIDED ON A RESTRICTED BASIS AND IS NOT TO BE USED IN ANY WAY DETRIMENTAL TO THE INTERESTS OF PANDUIT CORP.



FRONT DOOR, REAR DOOR,
AND SIDE PANELS NOT SHOWN

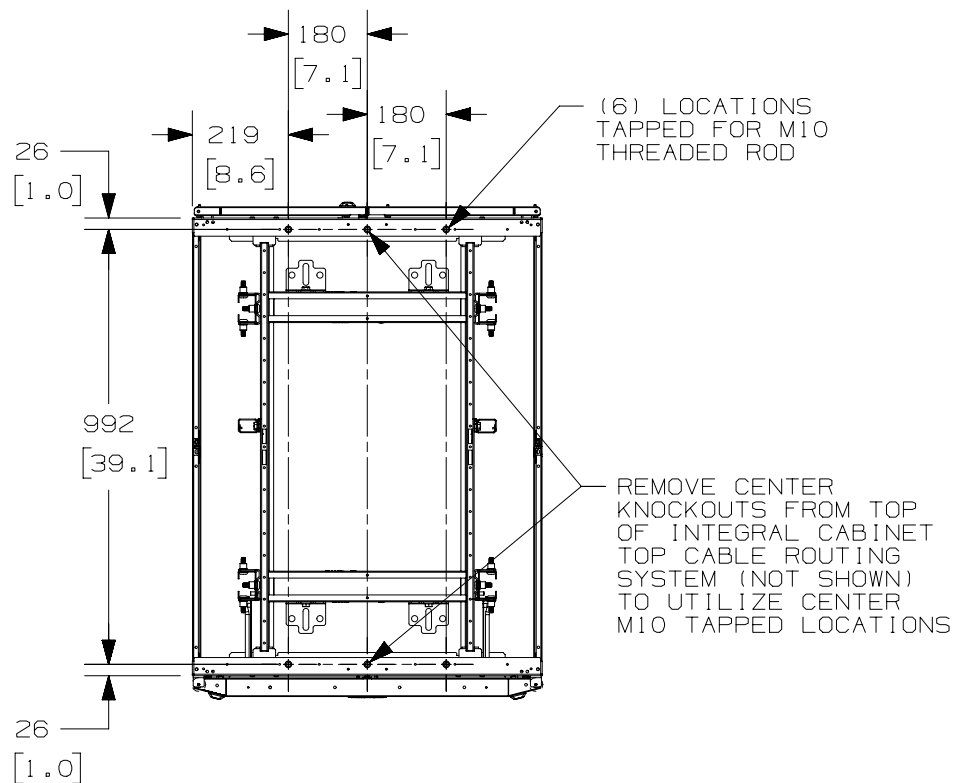


01A	12-09-14	PBS	ADP	TCN	SEE SHEET 1 OF 5 FOR REVISIONS	V09000BX
00B	8-27-14	PBS	ROJC	TCN	SEE SHEET 1 OF 5 FOR REVISIONS	12V352CS-DC
00A	7-14-14	PBS	ROJC	TCN	SEE SHEET 1 OF 5 FOR REVISIONS	12V352CS-DC
REV	DATE	BY	CHK	APR	DESCRIPTION	ECN

TITLE NET-ACCESS N TYPE CABINET WITH INTEGRAL CABINET TOP CABLE ROUTING SYSTEM AND CAGE NUT E-RAILS 800mm WIDE X 1070mm DEEP FAMILY CUSTOMER DRAWING					
ITEM REVISION NAME 12V352CS/01.PRT					
DATASET FILE NAME 12V352CS_DC/01A.PRT					
 THIRD ANGLE PROJECTION			MATERIAL: N/A		
			DRAWING NUMBER: 12V352CS-DC		
DRAWN BY PBS	DATE 7-14-14	CHK ROJC	SCALE NONE	SHT 4 OF 5	SIZE A

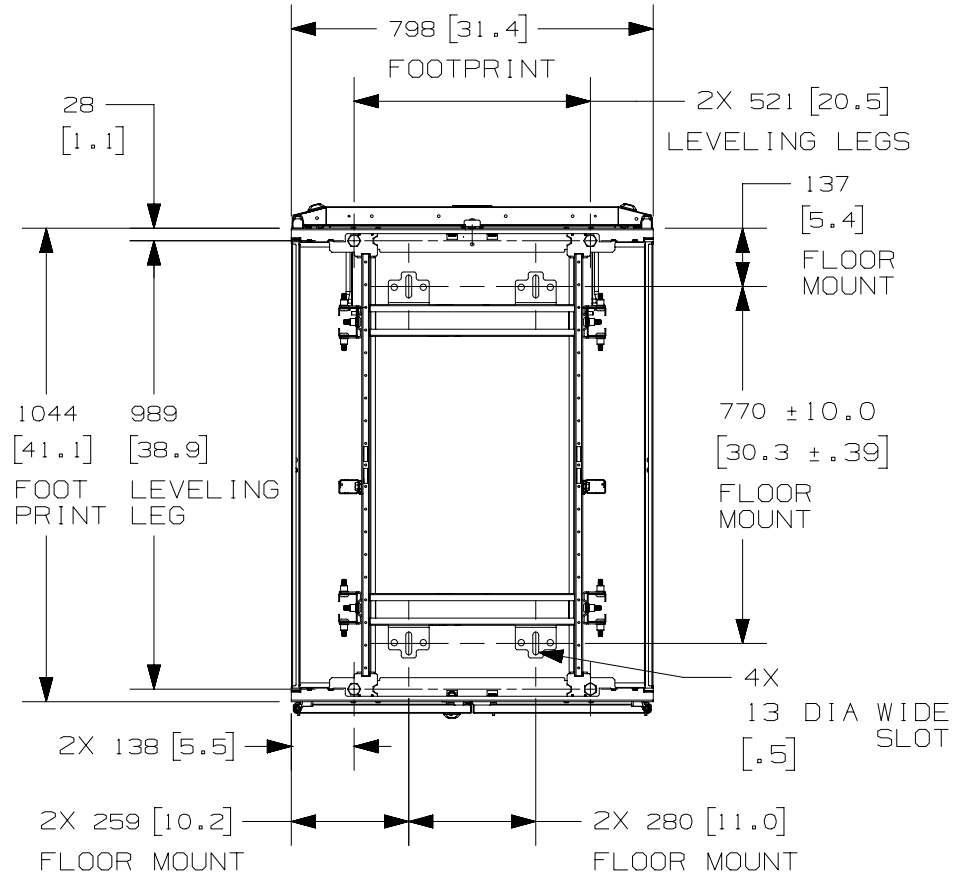
2

THIS COPY IS PROVIDED ON A RESTRICTED BASIS AND IS NOT TO BE USED IN ANY WAY DETRIMENTAL TO THE INTERESTS OF PANDUIT CORP.




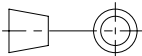
TOP VIEW
INTEGRAL CABINET TOP CABLE
ROUTING SYSTEM REMOVED FOR CLARITY

1



REAR OF CABINET
BOTTOM VIEW
FLOOR MOUNTING HOLE LOCATIONS -
SOME PARTS REMOVED FOR CLARITY

REV	DATE	BY	CHK	APR	DESCRIPTION	ECN
01A	12-09-14	PBS	ADP	TCN	SEE SHEET 1 OF 5 FOR REVISIONS	V09000BX
00B	8-27-14	PBS	ROJC	TCN	SEE SHEET 1 OF 5 FOR REVISIONS	12V352CS-DC
00A	7-14-14	PBS	ROJC	TCN	SEE SHEET 1 OF 5 FOR REVISIONS	12V352CS-DC

TITLE						NET-ACCESS N TYPE CABINET WITH INTEGRAL CABINET TOP CABLE ROUTING SYSTEM AND CAGE NUT E-RAILS 800mm WIDE X 1070mm DEEP FAMILY						CUSTOMER DRAWING					
ITEM REVISION NAME						12V352CS/01.PRT											
DATASET FILE NAME						12V352CS_DC/01A.PRT											
						THIRD ANGLE PROJECTION						MATERIAL :					
												N/A					
												DRAWING NUMBER:					
												12V352CS-DC					
DRAWN BY		DATE		CHK		SCALE						SIZE					
PBS		7-14-14		ROJC		NONE		SHT 5 OF 5				A					

2

1