

THIS COPY IS PROVIDED ON A RESTRICTED BASIS AND IS NOT TO BE USED IN ANY WAY DETRIMENTAL TO THE INTERESTS OF PANDUIT CORP.

PANDUIT P/N	WEIGHT
HB1D2J0AA10M1	2.3 lb (1.1 kg)

NOTES:
 1. IDENTIFICATION: 1RU HORIZONTAL, (10) C-13, METERED 230V / 16A / SINGLE-PHASE POU

PART NO.	COLOR
HB1D2J0AA10M1	BLACK

2. ACCESSORY COMPONENTS:
 (4) M6 x 20mm MOUNTING SCREWS
 (4) 12-24 x 1/2" MOUNTING SCREWS
 (1) RETAINING CLAMP FOR C-20 INLET

3. DIMENSIONS IN PARENTHESES ARE METRIC (mm).

4. POWER METER - RED, 4-DIGIT LED CONTINUOUSLY SCROLLS THROUGH POWER FACTOR, AMPS, VOLTS (RMS), AND REAL POWER IN WATTS (RMS).

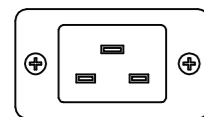
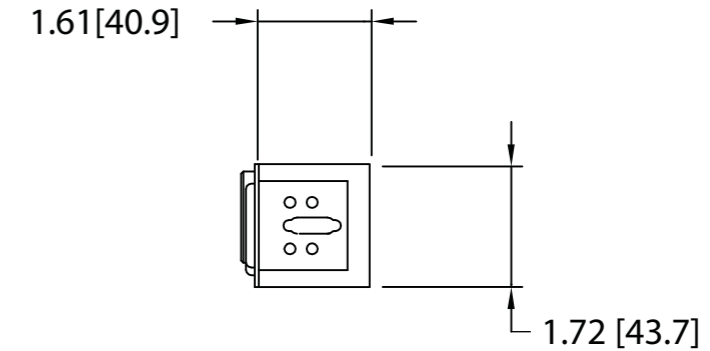
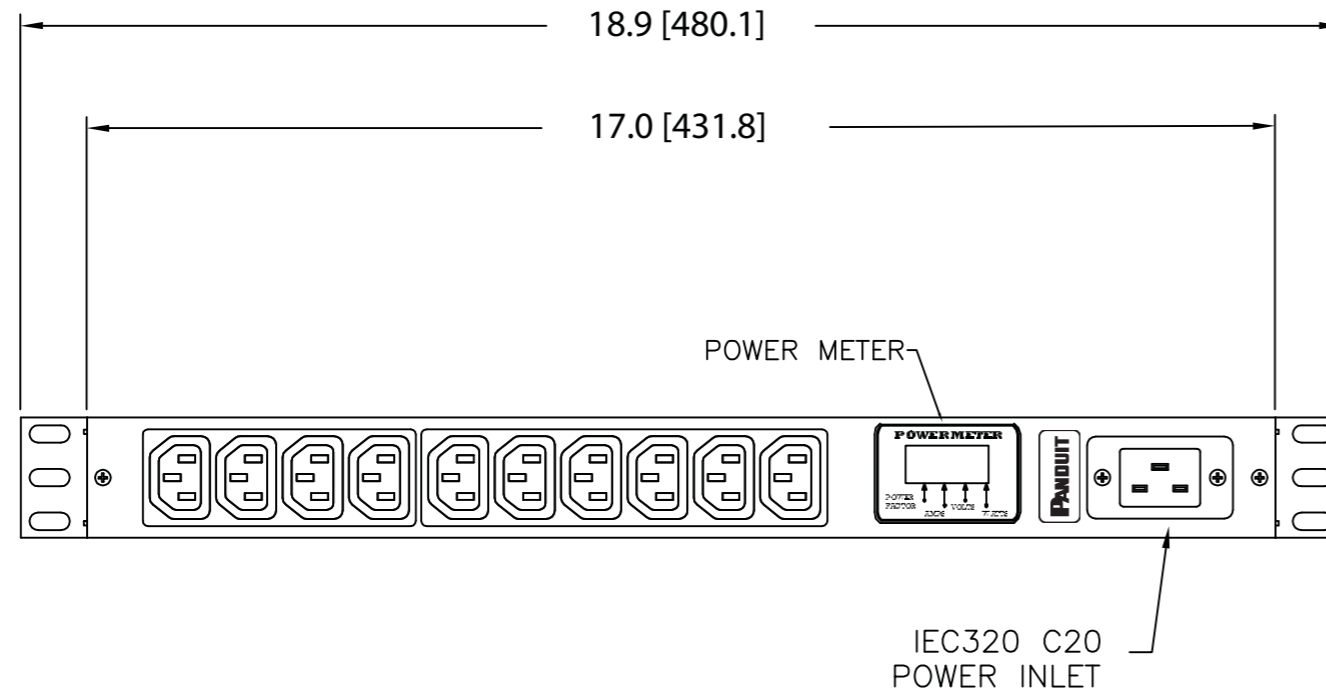
5. UNIT COMPLIES WITH IEC 60950-1, EN55022, EN55024, C-TICK AND IS CE MARKED.

6. RoHS COMPLIANT.

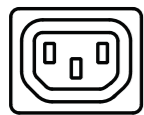
7. VISIT OUR ON-LINE CATALOG AT WWW.PANDUIT.COM FOR A CURRENT LIST OF PRODUCTS APPLICABLE FOR USE WITH THIS PART.

8. MAXIMUM AVAILABLE INPUT POWER = 3.7 KW

9. INSTALLATION SHALL COMPLY WITH ALL APPLICABLE NATIONAL, STATE, AND LOCAL CODES.



C20 POWER INLET
 20 AMP, 250V, SINGLE-PHASE
 SOCKET
 IEC320



TEN (10)
 RECEPTACLES
 10 AMP, 250V
 STRAIGHT BLADE
 IEC 60320/C13

REV	DATE	BY	CHK	DESCRIPTION	ECN	R	CUST	SUP	OTH
01A	8-23-12	PIP	MRWA	C. REVISED NOTE #5.	09V098HE				
00B	2-15-12	MRWA	KRKE	B. ADDED NOTE 9 A. REPLACED #10-32 SCREW WITH M6 SCREW	09V098HE				
00A	2-10-11	MAV	KRKE	RELEASED TO PRODUCTION	09V098HE				

MODEL FILENAME		09V098HE/01.PRT	
CAD FILENAME/LAYERS		09V098HE_DC/01A.PRT	
PANDUIT CORP. TINLEY PARK, ILLINOIS			
1RU HORIZONTAL, (10) C-13, METERED POWER OUTLET UNIT CUSTOMER DRAWING			
UNLESS OTHERWISE SPECIFIED, DIMENSIONAL TOLERANCES ARE:		UNLESS OTHERWISE SPECIFIED, ALL DIMENSIONS ARE GIVEN IN INCHES, THIRD ANGLE PROJECTION	
INCHES	±0.03	[METRIC - MILLIMETER]	±0.8
X.X	±0.015	X.X	±0.4
X.XX	±0.005	X.XX	±0.13
DRAWN BY		MAT'L:	
MAV			
DATE		SCALE	
2-10-11		NONE	
CHK'D		DRAWING NO.	DWG
KRKE		09V098HE	B
			SIZE
			B