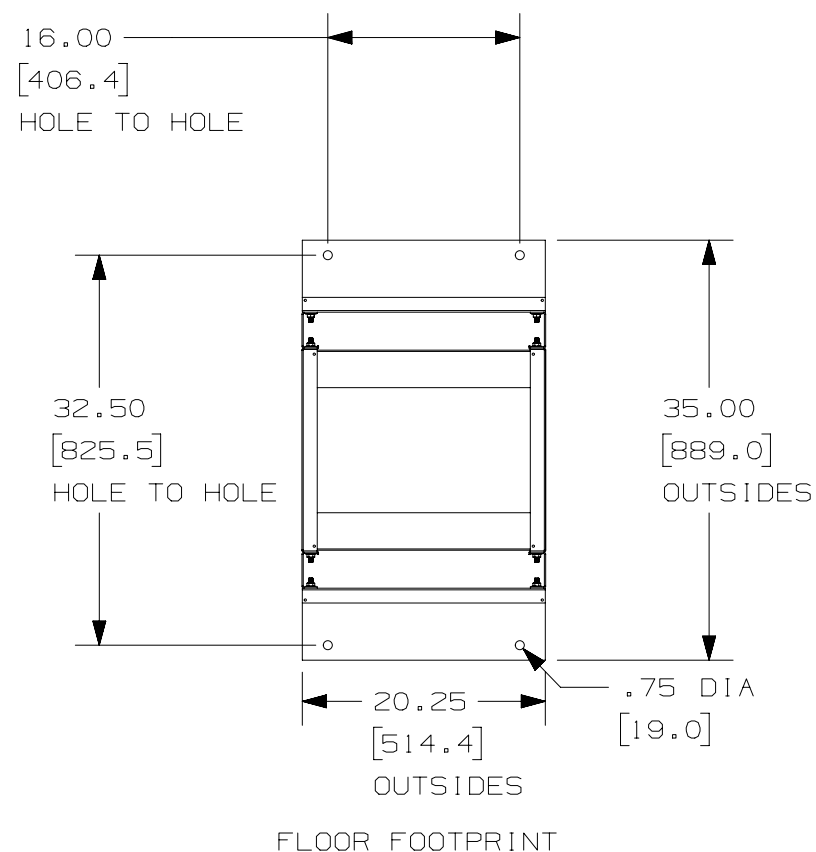
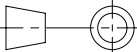


PANDUIT PART NO.	WEIGHT
ER4P2396	40.5 Kg/EACH 89 LB/EACH

1. SEE OUR ON-LINE CATALOG AT WWW.PANDUIT.COM FOR A LIST OF CURRENT PARTS APPLICABLE FOR USE WITH THIS PRODUCT.
2. PRIMARY DIMENSIONS ARE IN METRIC.
3. CAN BE USED WITH ANY EIA STANDARD COMPONENT IN ADDITION TO ALL PANDUIT HORIZONTAL CABLE MANAGEMENT AND PATCH PANEL PRODUCTS.
4. 52 AVAILABLE RACK SPACES.
5. EIA UNIVERSAL STANDARD HOLE PROGRESSION ON CHANNELS
.625", .625", .500", .625", .625", .500",
... ETC.
6. PART INCLUDES:
 - 2- TOP ANGLES
 - 2- BOTTOM ANGLES
 - 4- 8" CHANNELS
 - 2- BOTTOM CENTER BRACES
 - 2- TOP CENTER BRACES
 - 2- CONNECTOR BRACES)
 - 2- GROUNDING KITS - EACH KIT INCLUDES
 - (12) 3/8-16 X 1" BLACK HEX HEAD CAP SCREW
 - (24) 3/8" PAINT PIERCING GROUNDING WASHER
 - (1) TUBE OF ANTI-OXIDIZING PASTE
 - (12) 3/8-16 BLACK HEX NUTS
7. LOAD RATING IS 2000 LBS.

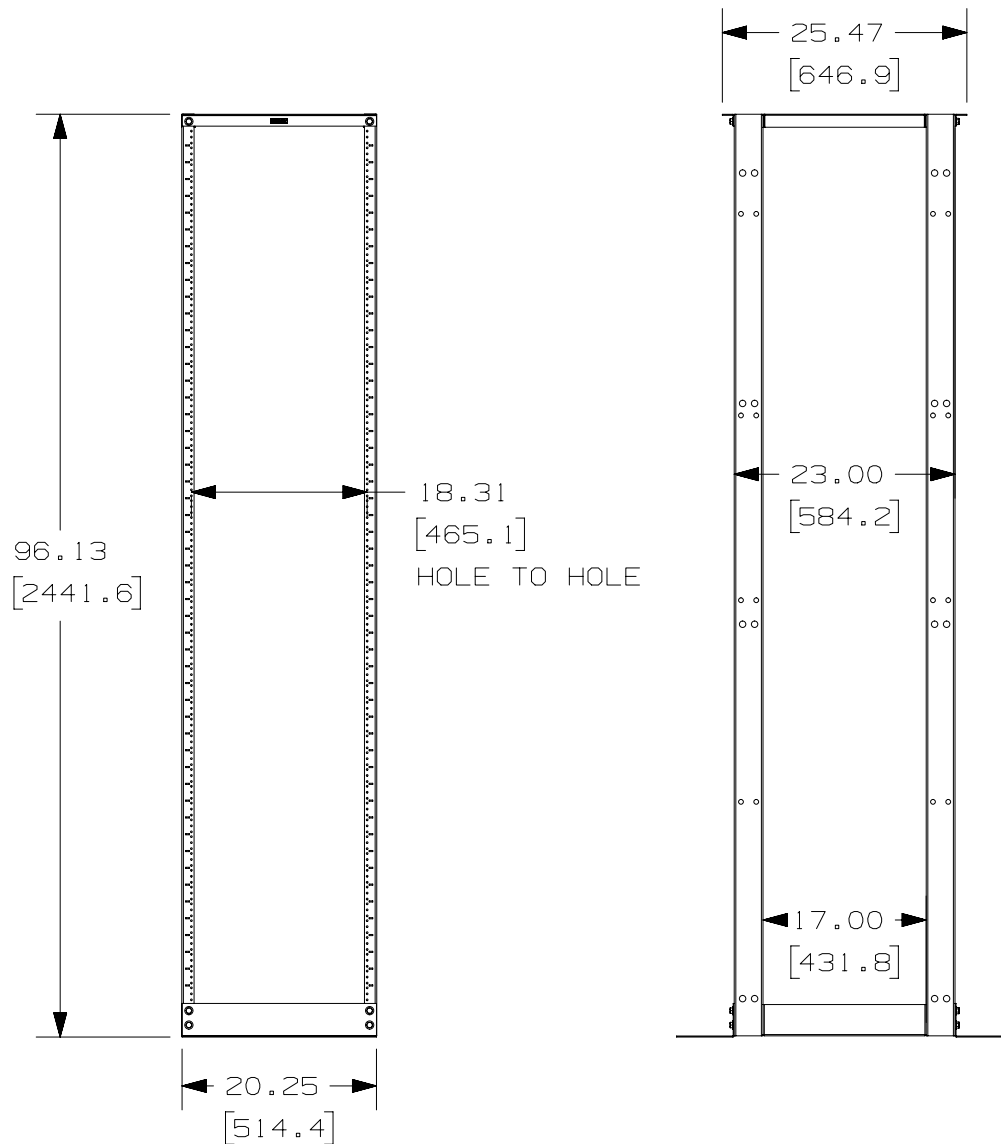


										TITLE TELECOMMUNICATIONS ROOM 4 POST RACK (ER4P2396) CUSTOMER DRAWING				<div>PANDUITTM</div> <div>MATERIAL:</div> <div>DRAWING NUMBER: 12V346AC-DC</div>	
										ITEM REVISION NAME 12V346AC/00					
										DATASET FILE NAME 12V346AC_DC/00A					
00A	2-6-13	BAME	PM	CMK	DRAWING RELEASED		12V346AC-DC	<div><div></div><div>THIRD ANGLE PROJECTION</div></div>							
REV	DATE	BY	CHK	APR	DESCRIPTION	ECN	DRAWN BY BAME	DATE 2-6-13	CHK PM	SCALE NONE	SHT 1 OF 3		SIZE A		

2

1

THIS COPY IS PROVIDED ON A RESTRICTED BASIS AND IS NOT TO BE USED IN ANY WAY DETRIMENTAL TO THE INTERESTS OF PANDUIT CORP.



PANDUIT PART NO.	WEIGHT
ER4P2396	40.5 Kg/EACH 89 LB/EACH

TITLE		TELECOMMUNICATIONS ROOM 4 POST RACK (ER4P2396)			
ITEM REVISION NAME		CUSTOMER DRAWING			
12V346AC/00		PANDUIT TM			
DATASET FILE NAME					
12V346AC_DC/00A		MATERIAL :			
		DRAWING NUMBER:			
		12V346AC-DC			
DRAWN BY	DATE	CHK	SCALE	SIZE	
BAME	2-6-13	PM	NONE	SHT 2 OF 3	A

2

1

00A	2-6-13	BAME	PM	CMK	DRAWING RELEASED	12V346AC-DC
REV	DATE	BY	CHK	APR	DESCRIPTION	ECN

B

A



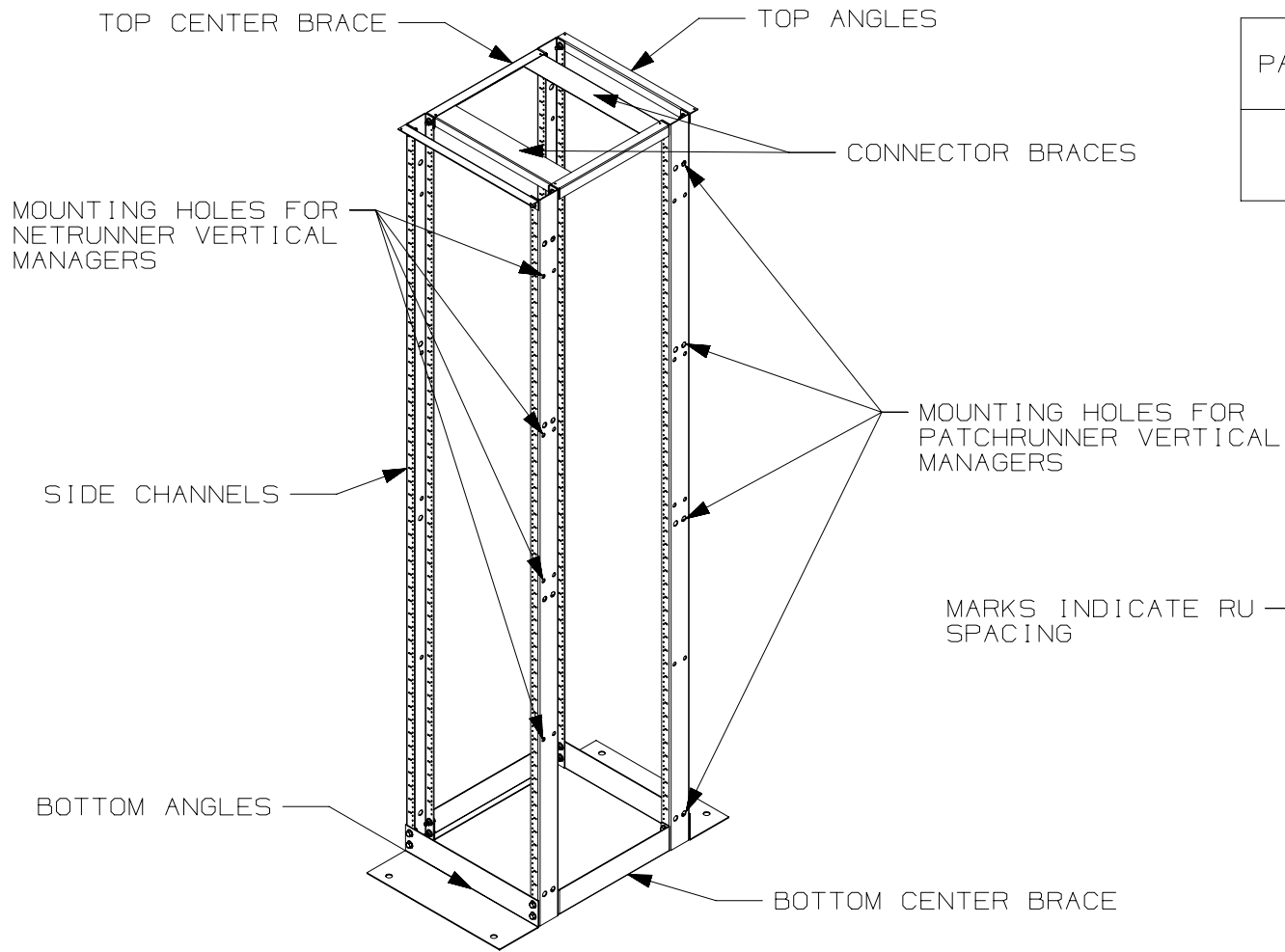
B

A

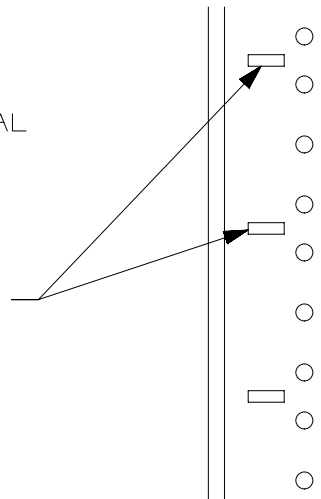


D10100DA/12

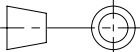
THIS COPY IS PROVIDED ON A RESTRICTED BASIS AND IS NOT TO BE USED IN ANY WAY DETRIMENTAL TO THE INTERESTS OF PANDUIT CORP.



PANDUIT PART NO.	WEIGHT
ER4P2396	40.5 Kg/EACH 89 LB/EACH



00A	2-6-13	BAME	PM	CMK	DRAWING RELEASED	12V346AC-DC
REV	DATE	BY	CHK	APR	DESCRIPTION	ECN

TITLE TELECOMMUNICATIONS ROOM 4 POST RACK (ER4P2396) CUSTOMER DRAWING					
ITEM REVISION NAME 12V346AC/00			PANDUIT TM		
DATASET FILE NAME 12V346AC_DC/00A					
 THIRD ANGLE PROJECTION			MATERIAL:		
			DRAWING NUMBER: 12V346AC - DC		
DRAWN BY BAME	DATE 2-6-13	CHK PM	SCALE NONE	SHT 3 OF 3	SIZE A